



Architect:
TUCKER SADLER ARCHITECTS
ARCHITECTURE > PLANNING > INTERIORS > DEVELOPMENT SERVICES

Construction Manager @ Risk:

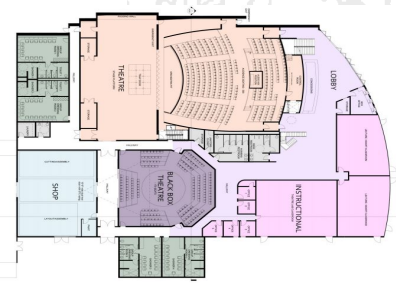
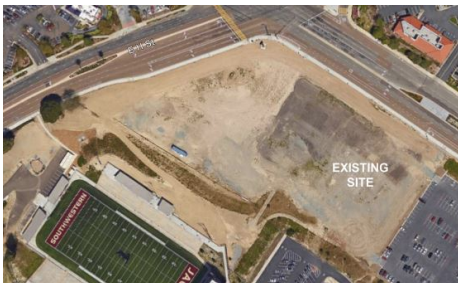
RUDOLPH AND SLETTEN



PERFORMING ARTS CENTER

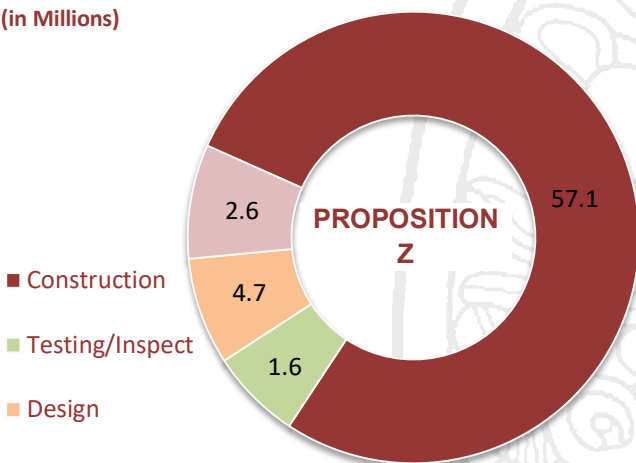
The Performing Arts Center is currently in its design phase. The PAC will be situated on the northeastern portion of the Southwestern College Main Campus. In addition to serving the students, this facility may be used to accommodate the community, host public events and cultural engagements. The PAC is planned to be designed to achieve LEED Silver Certification.

- Gross Floor Area: 41,384 SF
- 500-Seat Theatre Auditorium & Stage
- 170-Seat Black Box Theater
- Dance Instruction and Performance
- Performing Arts Classroom
- Audience Support
- Stage Craft/Prop Construction Area



Project Budget: 66M

(in Millions)



*Design costs funded by of Proposition R

Project Timeline

