



CALIFORNIA COMMUNITY COLLEGES  
CHANCELLOR'S OFFICE



SOUTHWESTERN COLLEGE

# 2018 Student Success Scorecard

*Southwestern Community College District (SCCD)*



*Office of Institutional Research, May 2018*

2016-17  
SWC Profile

## 2016-17 Southwestern College Profile

- Student headcount: **26,775**
- Full-Time Equivalent Students: **15,877**
- Demographic Summary:
  - Female (54.4%)
  - 24 years of age or younger (62.7%)
  - Hispanic (66.4%)



# Scorecard Completion Cohort



## new students

First-time students who enrolled in a credit course at Southwestern College.

## showing intent to "complete"

And who earned 6 units & attempted any math or English course within the first 3 years of entry.\*

## successful "completion"

Within 6 years: earned an award\*\*, transferred to a four-year institution, or achieved "transfer prepared" status.

**2011-12**

(cohort start)

By end of

**2013-14**

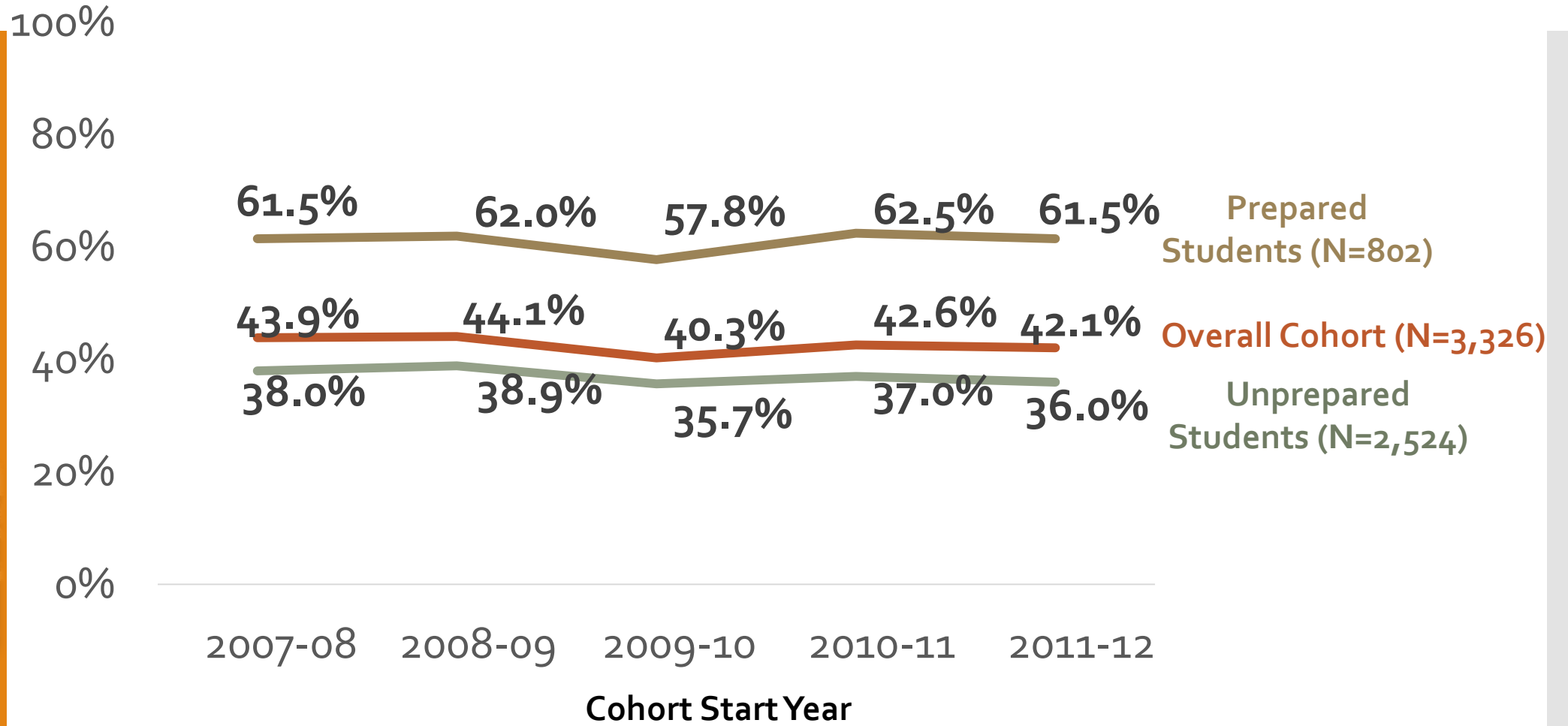
**2016-17**

(outcome)

\*Units, courses, and outcomes may be completed anywhere in the CCC system after entry at SWC.

\*\* Only Chancellor's Office approved certificates and degrees qualify.

# Completion Five Year Summary

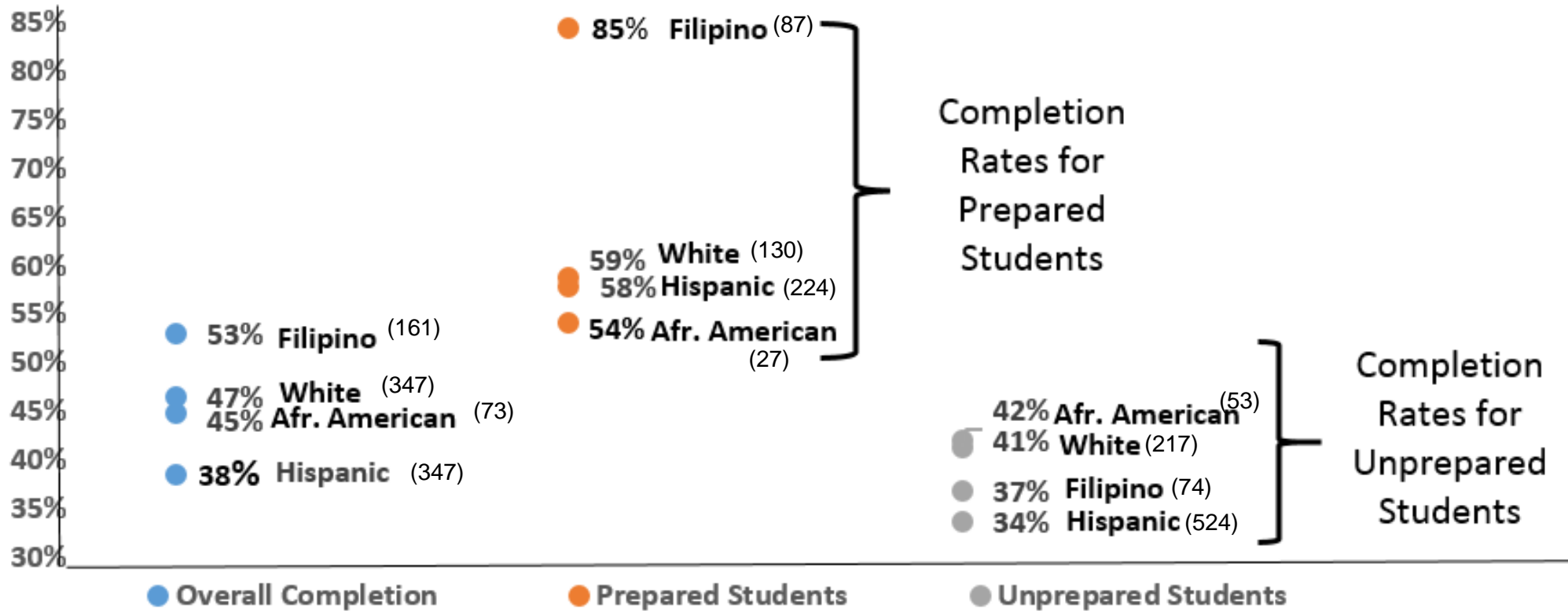


	2007-08	2008-09	2009-10	2010-11	2011-12
<b>Cohort Count</b>	3,446	2,540	3,632	3,030	3,326
<b>Completers</b>	1,513	1,121	1,464	1,290	1,401

# 2011-12 Completion Rates by Ethnicity and Preparedness

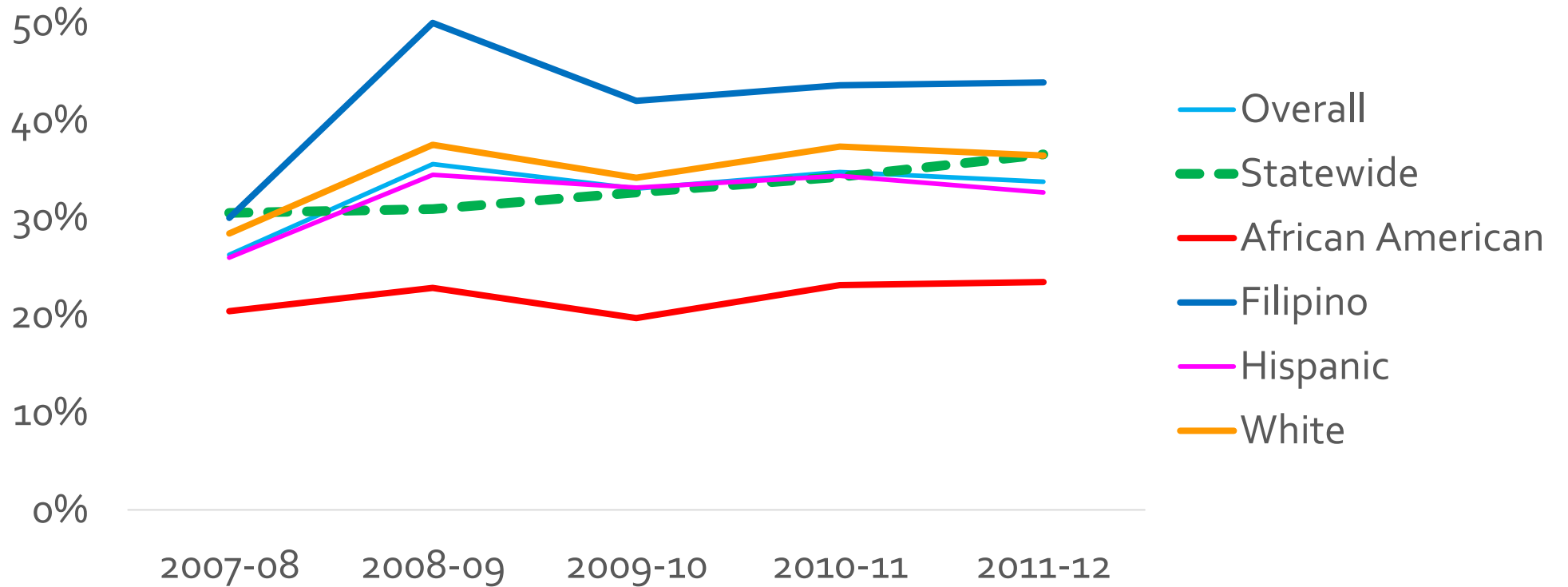


## College Completion Rates by Student Ethnicity and Preparedness



**Limitations:** Due to coding, Southwestern College’s race and ethnicity data prior to Fall of 2016 is unreliable. In particular, increasing or decreasing trends in the Hispanic or White populations may reflect changes in coding rather than true changes in the student population. Please use caution when interpreting this data and when possible, rely only on figures on or after Fall of 2016.

## 5-Year Remedial Math Progress Rate by Ethnicity



Remedial Math Progress Rate by Ethnicity



	SWC Overall	Statewide	African American	Filipino	Hispanic	White
<b>2011-12</b>	33.7%	36.5%	23.4%	43.9%	32.6%	36.4%

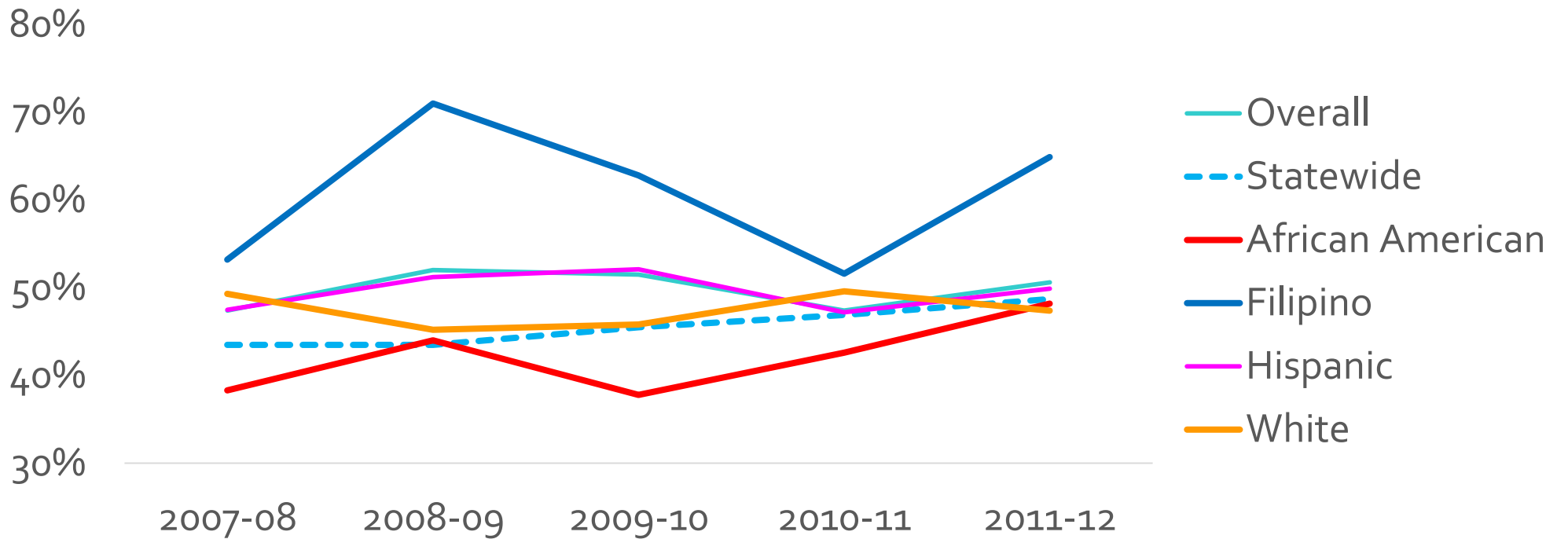
\*Overall: Only includes the 4 ethnic groups that are selected here.

\*\*Groups in red represent rates that were either below the Statewide or SWC Overall Rates.

# Remedial English Progress Rate by Ethnicity



## 5-Year Remedial English Progress Rate by Ethnicity



	SWC Overall	Statewide	African American	Filipino	Hispanic	White
<b>2011-12</b>	50.6%	48.7%	48.2%	64.9%	49.9%	47.4%

\*Overall: Only includes the 4 ethnic groups that are selected here.

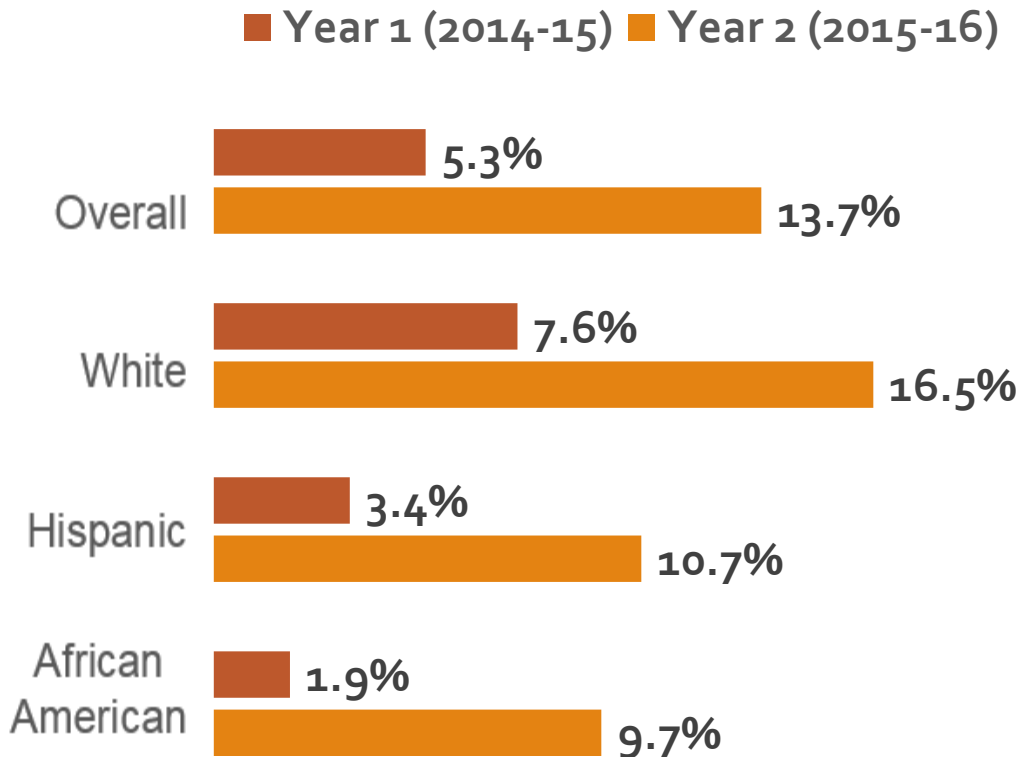
\*\*Groups in red represent rates that were either below the Statewide or SWC Overall Rates.

# Transfer Level Achievement Math

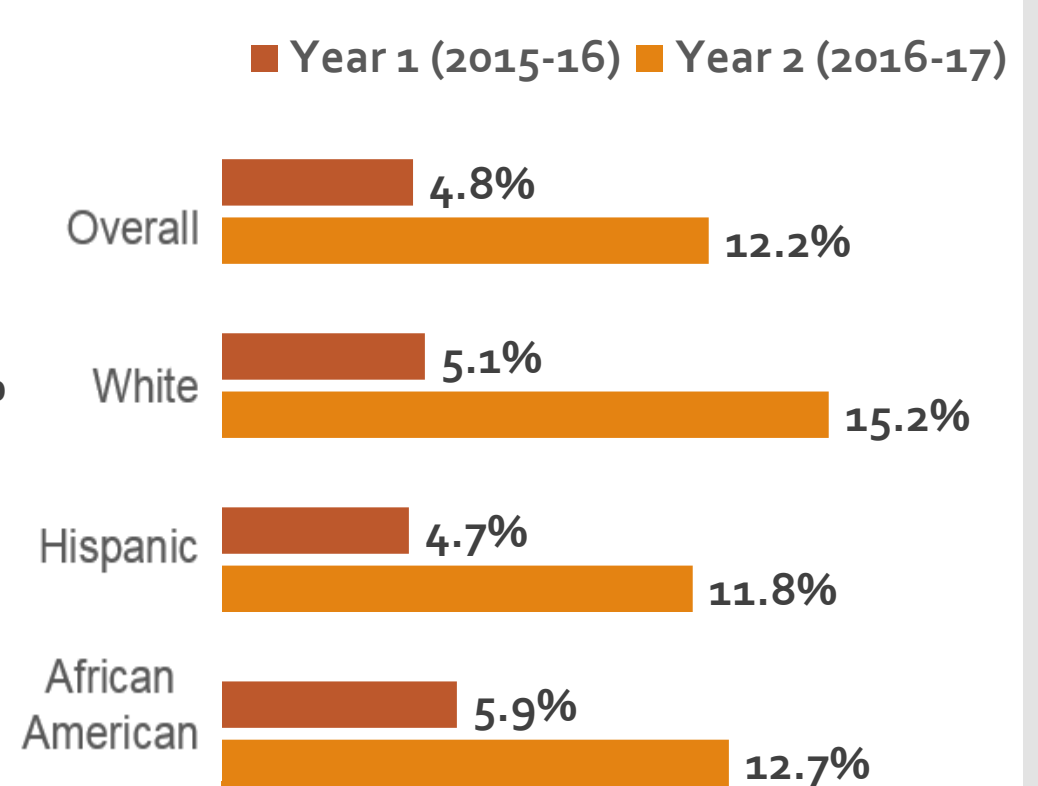
**Cohort** : First time students who earned 6 units and attempted any level math or English course in first year.

**Outcome:** Successful completion of transfer level math course after 1 and 2 years.

2014-15 Cohort



2015-16 Cohort



\***Overall:** Only includes the 3 ethnic groups that are selected here.  
 \*\*Only groups with at least 100 cases are represented in bar chart.



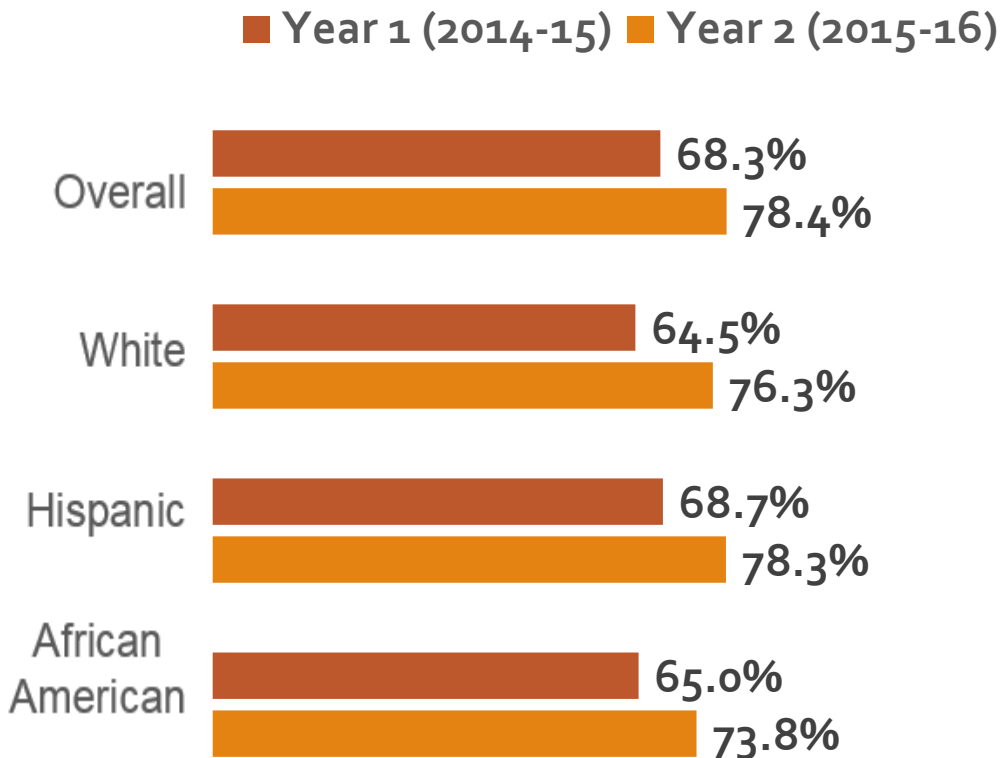
**Cohort** : First time students who earned 6 units and attempted any level math or English course in first year.

**Outcome:** Successful completion of transfer level English course after 1 and 2 years.

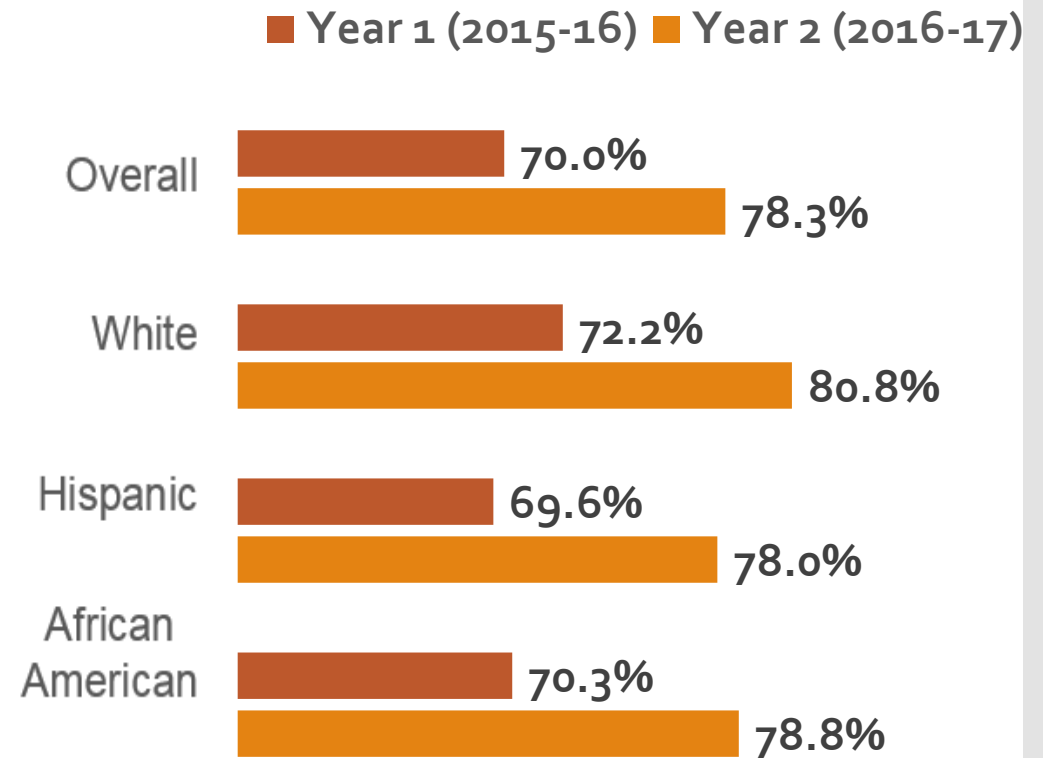
# Transfer Level Achievement English



## 2014-15 Cohort



## 2015-16 Cohort



\***Overall:** Only includes the 4 ethnic groups that are selected here.

\*\*Only groups with at least 100 cases are represented in bar chart.

# Retention Rate Trends for First-Time SWC Students

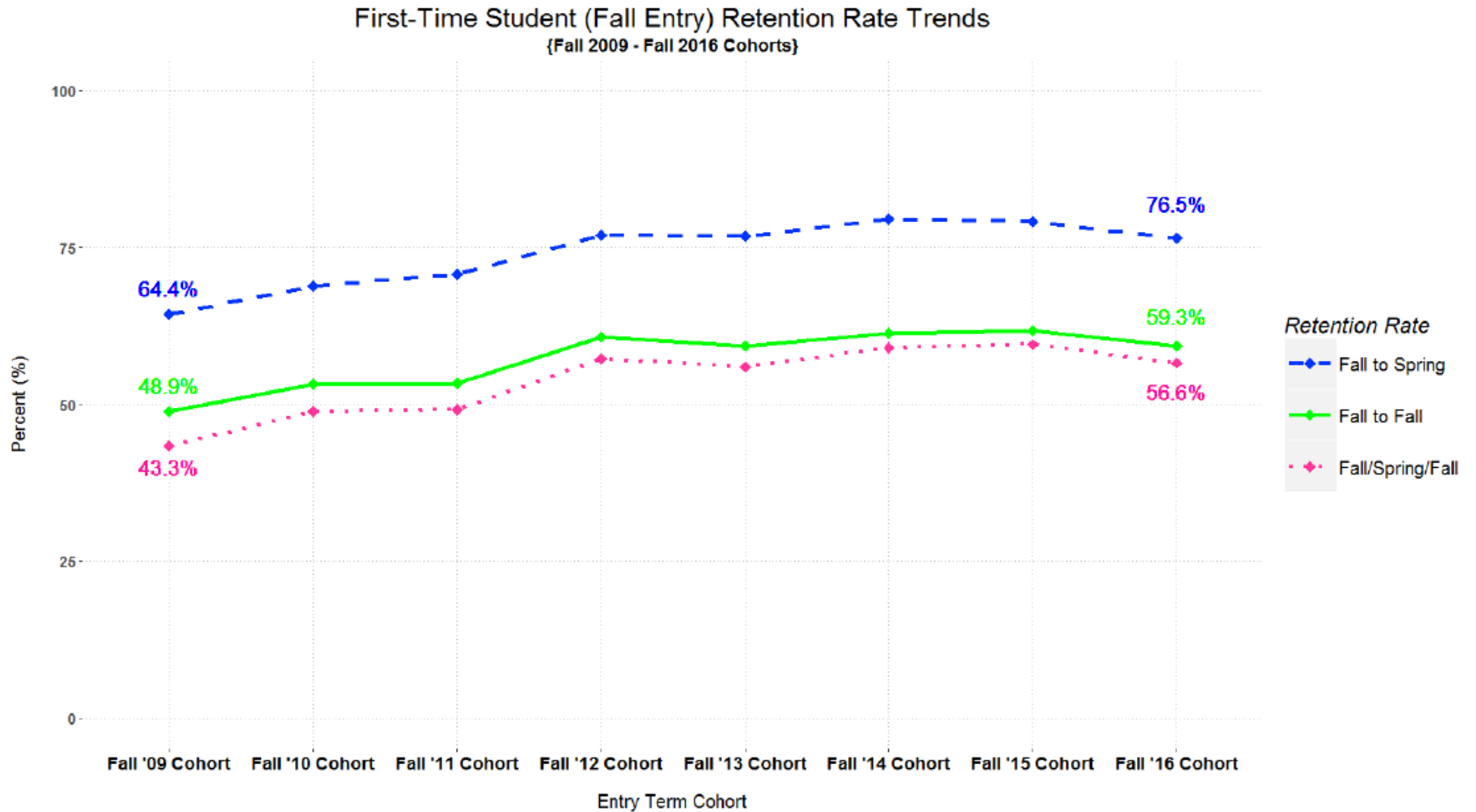
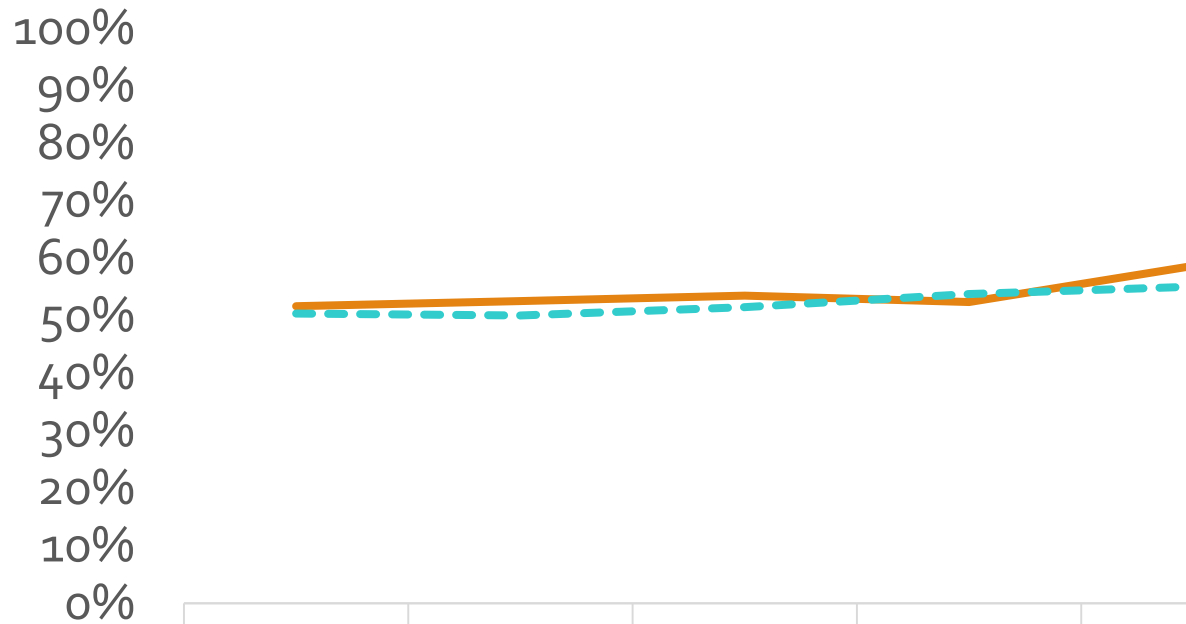


Figure 1: Trends in retention rates for first-time student fall cohorts. Blue dashed line represents *Fall to Spring* retention rate; green solid line represents *Fall to Fall* retention rate; pink dotted line represents *Fall/Spring/Fall* retention rate. Rates for the Fall '09 cohort and the Fall '16 cohort are added in text for comparison and reference. First-time student cohorts retrieved from CCCCO First-Time Reference File as first-time, credit, and non-special admit at Southwestern Community College District (CCC\_FIRST\_TERM\_CR\_NSA\_VALUE & CCC\_FIRST\_TERM\_CR\_NSA\_LOC). Retention rate defined by the Research & Planning Group of California Community Colleges and can be found here: <http://archive.rpggroup.org/node/47>

# Career Technical Education

**Cohort:** Attempted CTE course for the first time and completed more than 8 units in the subsequent 3 yrs in a single discipline.  
**Outcome:** AA/AS or Credit Certificate, Transfer to 4 yr, or Transfer Prepared within 6yrs

## 2011-12 Career Technical Education Completion Outcome



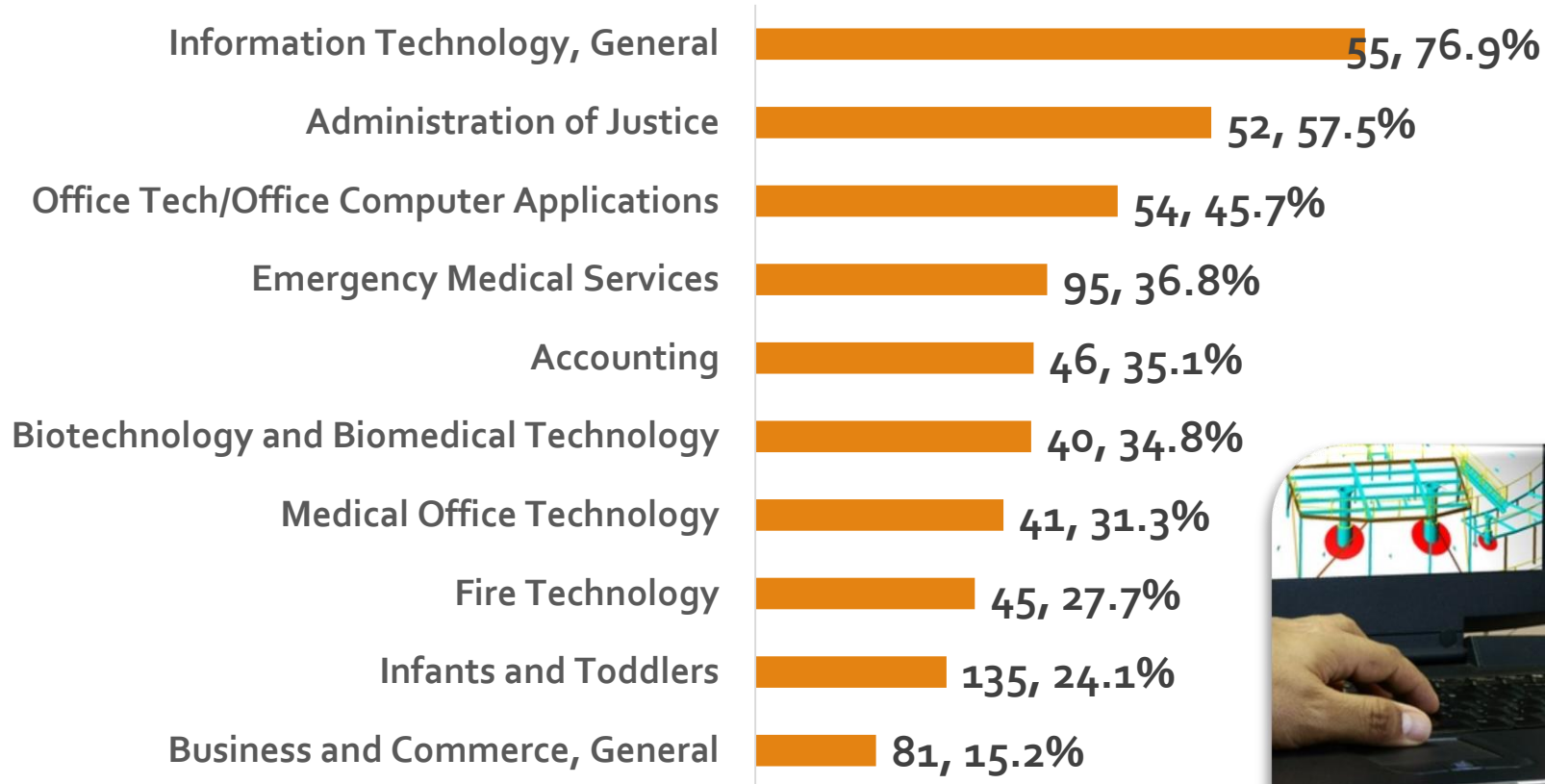
	2007-2008	2008-2009	2009-2010	2010-2011	2011-2012
— SWC Overall	51.7%	52.6%	53.5%	52.4%	58.7%
- - - Statewide	50.4%	50.1%	51.5%	53.8%	55.1%



Career Technical Education Metrics: Career Skills Builder

### 2014-15 Skills Builder Cohort, Median % Earnings Change by Discipline (n, %)

■ Median % Earnings Change



Median % Change in annual wages for students who passed CTE coursework and left system without degree/certificate or transfer.



\*Only includes disciplines with highest enrollments

# Interventions: Closing the Student Equity Gaps



# Interventions: Closing the Student Equity Gaps

- South County Education Collaborative with SUHSD
  - High School Outreach and Recruitment
  - Faculty Partnerships (English and Math Curriculum Gap Analysis)
- Embedded Tutoring (Supplemental Instruction)
- SWC Cares (Holistic Student Support)
- Graduation Initiative
- Professional Development (Equity Minded)
- Transfer University Campaign
- Multiple Measures Pilot Project (AB 705)
- Student Communities: Athletics, Basic Skills/Fast Track Pathways, BAYAN, Black Brotherhood Leadership Association (B2LA), First Year Experience (FYE), Foster Youth, Ocelotl PUENTE, Restorative Justice, Veterans.
- Counseling Support (543:1 Counselor to Student Ratio in 2018; Statewide: 611:1)



A Guided  
Pathways  
Framework

