

STUDENT RESOURCE GUIDE - FALL 2014



Higher Education Center at San Ysidro
460 West San Ysidro Boulevard, San Ysidro, CA 92173
(619) 216-6790

Student Services/ Front Counter

Monday, 7:45 a.m.–4:45 p.m.
Tuesday–Friday, 7:45 a.m.–6:45 p.m.
Saturday, 7:45 a.m.–3:45 p.m.
Student Services (1st floor)
(619) 216-6790, Ext. 4901, 4902, 4903



Picture not
Available

Jazmin Velazquez Nancy McKenzie Jesus Gaytan

- ◆ Admissions & Records/Cashier
- ◆ Counseling Appointments
- ◆ E.O.P.S. Information
- ◆ General Information
- ◆ Lost and Found
- ◆ Petitions
- ◆ Parking Permit

Counseling

By appointment only:

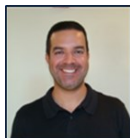
Monday, Wednesday & Thursday, 8:45 a.m.–5:00 p.m.

Tuesday, 12:30–7:00 p.m.

Friday, 9:00 a.m.–2:00 p.m.; Saturday 8:00–11:00 a.m.

Office # 5100-C (Student Services, 1st floor)

(619) 216-6790, Ext. 4901, 4902, 4903



Osvaldo Amezcua

- ◆ Academic/Career Counseling
- ◆ Personal Counseling
- ◆ Crisis Counseling
- ◆ Student Education Plan (SEP)
- ◆ Transfer to a University
- ◆ Deciding on a Major
- ◆ Orientation to College
- ◆ Scholarship Information

Financial Aid Services

Walk-in Hours: Mon., Tues., Thurs., Fri., 7:45–11:00 a.m., 2:00–3:30 p.m.;

Wed., 9:30–11:30 a.m., 3:00–5:30 p.m.

Office #5100-B (Student Services, 1st floor)

(619) 216-6790, Ext. 4904

- ◆ FAFSA / BOGW
- ◆ Application Assistance
- ◆ Loan Assistance
- ◆ Scholarship Assistance
- ◆ Student Employment Information



Laura Arana

Assessment Test

- ◆ English, Reading, Mathematics:
Sept. 12, 19; Oct. 10, 24; Nov. 7, 21; Dec. 5
 - ◆ English as a Second Language:
Oct. 17; Nov. 14; Dec. 12
- All tests are on Friday beginning at 12:30 p.m.**

Student Services (1st floor)

(619) 216-6790, Ext. 4901, 4902, 4903

To sign up, stop by the Student Service Counter

Disability Support Services (DSS)

By appointment only, go to Student Services.
(619) 216-6790, Ext. 4901, 4902, 4903

By Appointment Only

- ◆ Disability Counseling
- ◆ Educational Planning
- ◆ Note Takers as Needed
- ◆ Priority Registration
- ◆ Test Accommodations

Psychological Counseling

9/30, 10/7, 10/28, 11/18, 12/16

Tuesdays, 3:00 p.m.–6:00 p.m.

By appointment only, go to Student Services.

(619) 216-6790, Ext. 4901, 4902, 4903

Counselor, Grace McKissick

- ◆ Personal and Psychological Counseling
- ◆ Provide support and make referrals
- ◆ Individual Psychotherapy



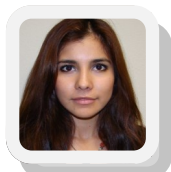
PLEASE TURN OVER



Tutoring Services

ENGLISH / WRITING / ESL

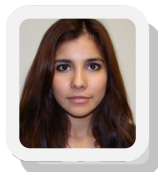
Monday, 9:00 a.m.–12:00 p.m.
Tuesday, 12:00–3:00 p.m.
Wednesday, 4:00–6:00 p.m.
Library—1st floor



Michelle Sanchez

MATHEMATICS

Wednesday, 9:30 a.m.–12:30 p.m.
Thursday, 4:00–7:30 p.m.
Friday, 9:30–11:00 a.m.
Library—1st floor



Michelle Sanchez

CHILD DEVELOPMENT

Tuesday, 9:00 a.m.–1:00 p.m.
Wednesday, 2:00–6:00 p.m.



Edna Marquez

COMPUTER LAB

Monday, 9:30 a.m.–12:00 p.m.
& 3:15–7:45 p.m.
Tuesday, 9:30 a.m.–2:30 p.m.
Wednesday, 9:00 a.m.–12:00 p.m.



Carlos Verduzco

Library

Open Study Area
Monday–Friday, 7:45 a.m.–7:30 p.m.
Saturday, 7:45 a.m.–3:30 p.m.
Library Room #5105 (1st floor)
(619) 216-6790, Ext. 4907

- ◆ Encyclopedias, Dictionaries
Magazines, Newspapers and
Paper Back Books Available
- ◆ On-Line Requests Information
- ◆ Reserved Textbooks Available

Librarian Services
Monday, 9:30 a.m.–12:30 p.m.
Tuesday, 11:00 a.m.–2:30 p.m.
Wednesday, 2:00–6:00 p.m.
Thursday, 9:30 a.m.–3:00 p.m.

Librarians

Erika Prange
Tanya Carr
Laura Galvan-Estrada



Computer Lab

Monday–Friday, 7:45 a.m.–7:30 p.m.
Saturday, 7:45 a.m.–3:30 p.m.
Room #5203 (2nd floor)
(619) 216-6790, Ext. 4911

- ◆ Computers available on a first come, first served basis
- ◆ Printing Available:
.10 Per Black & White Copy
.25 Per Color Copy
- ◆ Scanner available
- ◆ Computer Technician Support available:
Monday: 7:45 a.m.–4:00 p.m.
Tuesday–Friday: 7:45 a.m.–7:30 p.m.
Saturday: 8:30 a.m.–12:30 p.m.
(Start date TBD)



Rommel Vazquez



Arick Sandoval

Health Services

Monday, 4:00 p.m.–6:30 p.m.
Thursday, 8:00 a.m.–1:30 p.m.
Room #5108 (1st floor)
(619) 216-6790, Ext. 4909
Gisel Horton, Registered Nurse



- ◆ Blood Pressure Screening
- ◆ Health Education & Counseling
- ◆ Over the Counter Medication
- ◆ Pregnancy Testing
- ◆ Referral Services
- ◆ TB Skin Test & Readings
- ◆ Body Composition Screening

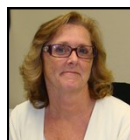
Administration

Director of Center Operations



Cynthia Nagura

Center Operations Supervisor



Heidi Newhouse

Center Coordinator

Picture not available

Margarita Ramirez

Clerical Assistant



Ninfa Hernandez