



Architect:
Marlene Imirzian & Associates Architects

Construction Manager @ Risk:

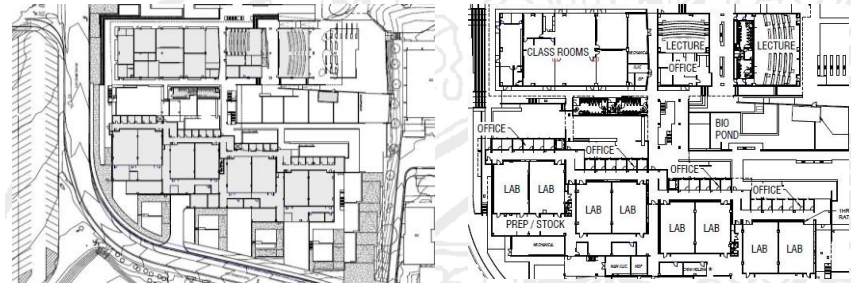


MATH, SCIENCE & ENGINEERING BUILDING

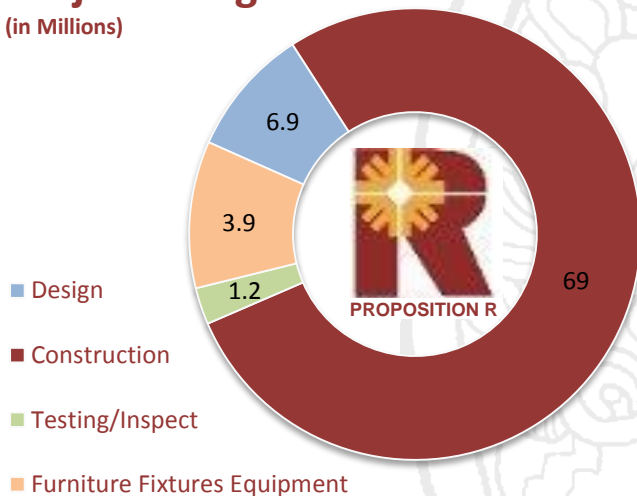
A new Math, Science, and Engineering building will replace existing classrooms, laboratories, and lecture hall spaces currently housed in multiple buildings over 50 year old. This new and advanced two-story facility is a corner stone of the Science, Technology, Engineering, and Mathematics programs, including Biology, Chemistry, Physics, Geology, and Mathematics. The building is designed for certification as a Leadership in Energy & Environmental Design (LEED) Silver project by the U. S. Green Building Council. Sustainability features include drought tolerant landscaping and a large belowground cistern for collecting building condensate water and rainwater for use in irrigation.

The site for this new building is where the current Pool, Physical Education, and Gymnasium facilities are located. These original campus facilities are being relocated to the undeveloped parcel at the corner of H Street and Otay Lakes Road.

- Est. Size 66,969; 103,029 GSF
- Faculty/Administration Office Space
- Rooftop Telescope Platform
- Classrooms and Laboratories
- Biology Green House & Pond
- MESA Achievement Program



Project Budget: 81M (in Millions)



Project Timeline

