

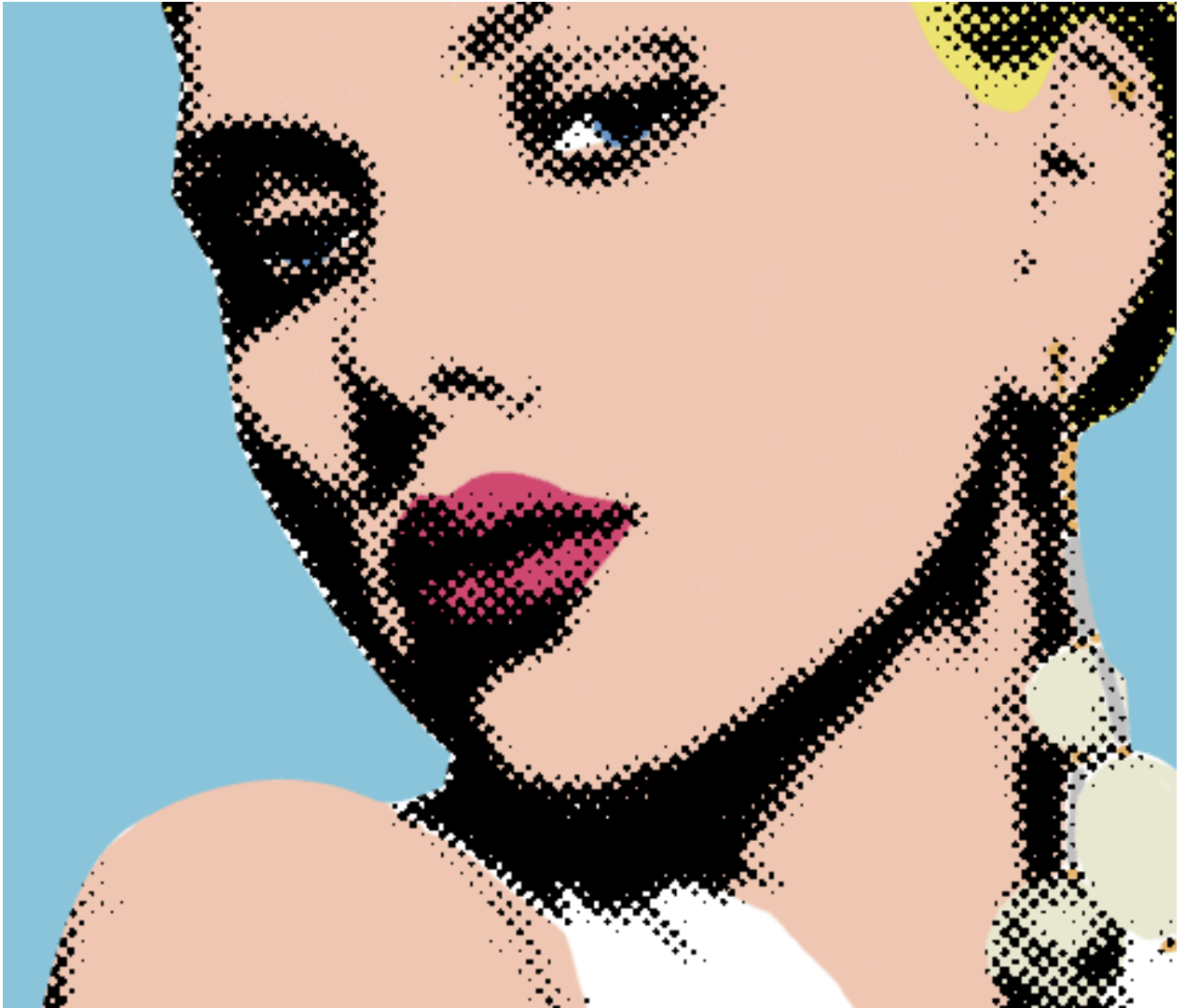
Pop Art Portraits

If you are a fan of pop art then you're probably already well acquainted with the work Roy Lichtenstein. Roy Lichtenstein became one of the leading pop artists of the sixties with his comic-strip paintings.

Benday dots were Lichtenstein's trademark. Benday dots are a printing process which combines two (or more)

different small, coloured dots to create a third colour. Back in the day, pulp comic books used benday dots in primary colours to inexpensively create the secondary colours such as flesh tone.

You can create the benday dot effect by using the Colour Halftone filter found in Photoshop, however in this tutorial I'm going to show you a way to create a fantastic looking black and white Halftone Pattern.



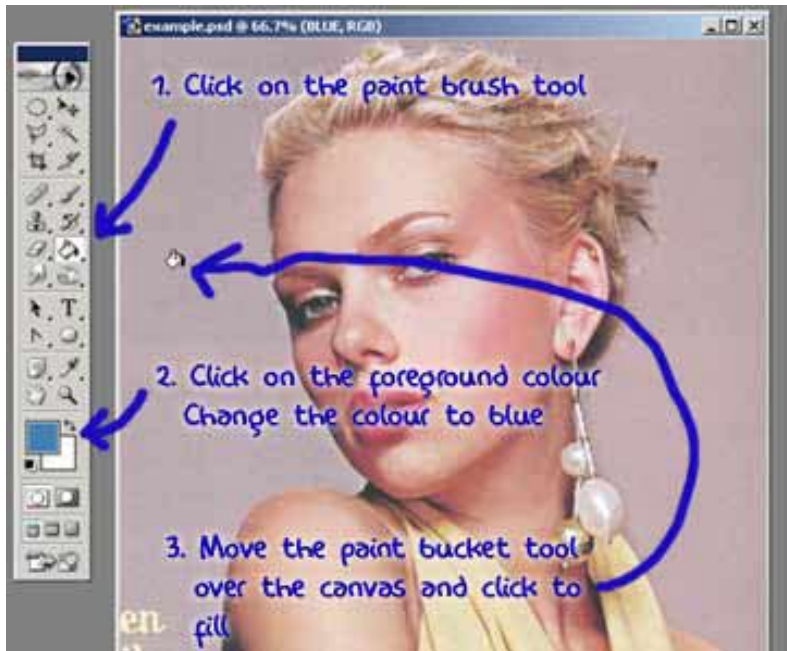
Creating the Half Tone Shading

Preparing the Canvas

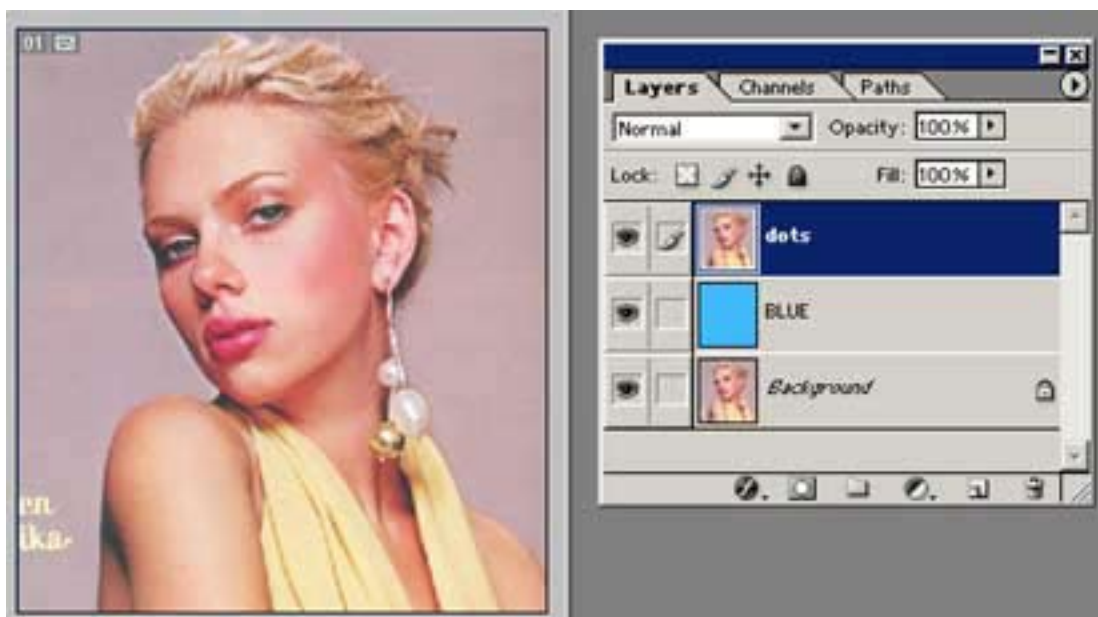
Open your picture in photoshop that is going to become pop art and duplicate the layer called “Background”. (Just click the layer called “Background” and drag it to this icon at the bottom of the layer window to duplicate the layer.)

Rename this new layer “dots”. (To rename a layer right-click on the name in the Layer Palette and select Layer Properties).

Create another new layer and fill it bright blue using the Paint Bucket tool

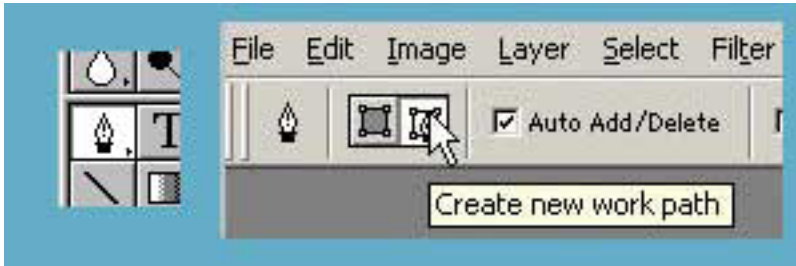


Drag this layer between the two existing layers and rename it something meaningful i.e “blue”. The image below shows what your Layer Palette should look like. This is the basic set up to begin.



Now working on the “dots” layer we need to clear out all the unwanted parts of the photograph. In this case I want to isolate the image and delete the rest.

Remember to make sure the pen tool is set to create a Work Path. See below.



*NOTE: You could use the eraser tool but the results won't be as professional.

Take the pen tool create a path around the person (or thing) and then make it into selection. Invert the selection (CTRL + Shft + i) and hit delete. Deselect (Ctrl + D)



Making the Dots

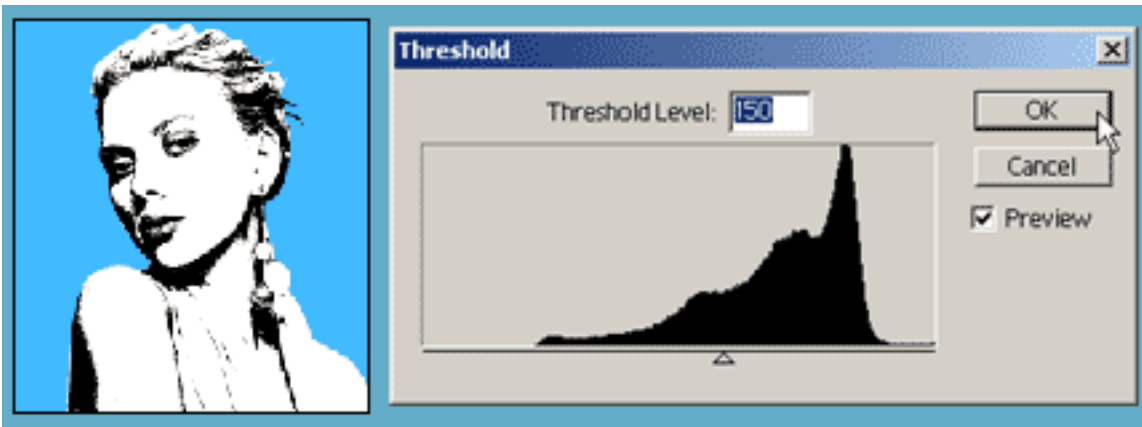
Desaturate the “dots” layer (Ctrl + Shft + U).
Digital Pop Art pic 3



Next adjust Threshold to something dramatic (still working on the “dots” layer).

Image >> Adjustments >> Threshold...

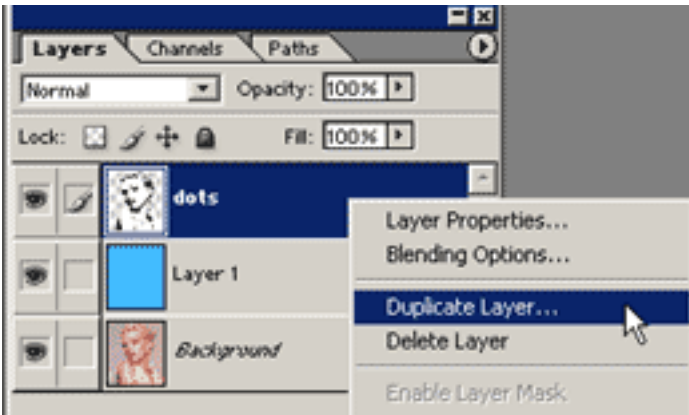
The settings I used are shown in the image below, but you will need to experiment to see what threshold settings works for YOUR image.



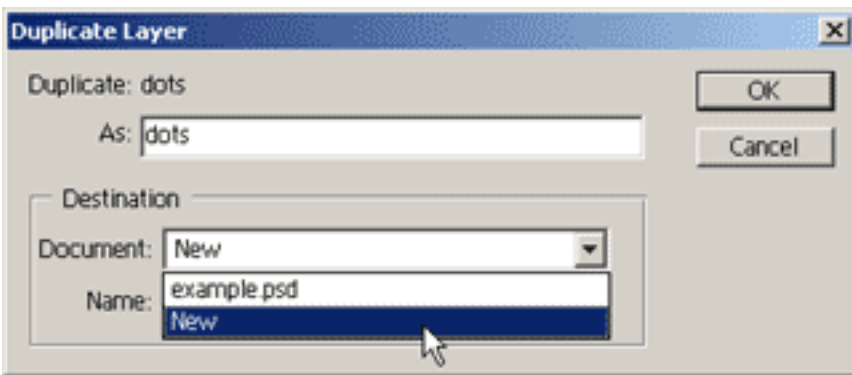
Using Threshold will leave the image looking very pixelated (jagged). So apply Gaussian Blur (approximately a 2-3 pixels should do it). Filter >> Blur >> Gaussian Blur...



In your Layers Palette right-click on the “dots” layer and select Duplicate Layer.... See image below.



Select New for the Destination Document. Now you will have 2 documents open in photoshop.



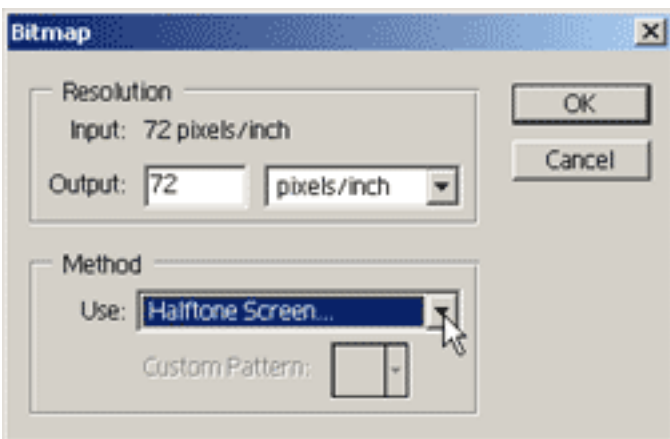
Working on your new document change the Mode to Grayscale.

Image >> Mode >> Grayscale

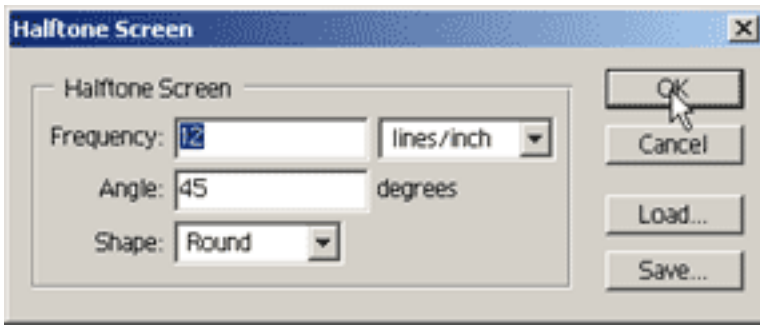
A dialogue box appears...”Discard color information?”...Click OK.

Now change the Mode to Bitmap.

Image >> Mode >> Bitmap



Next appears the Halftone Screen box. Apply the settings shown below. Note you may want to experiment with the Frequency as this decides the size of the dots. Click OK.



Almost there with the dots. All that's left is to transfer the dots back to the first document.

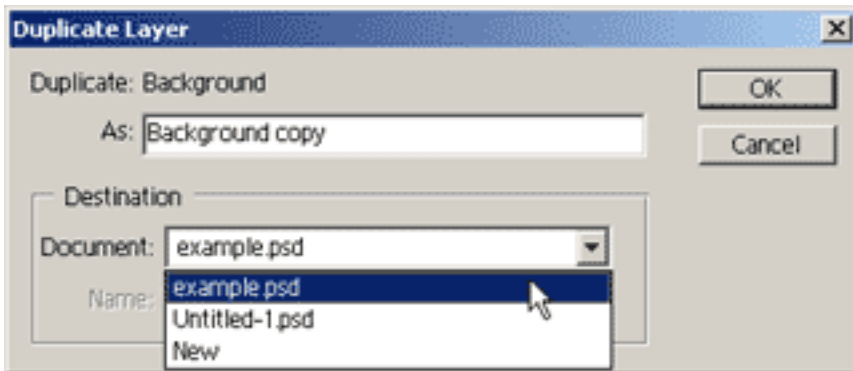


Organizing

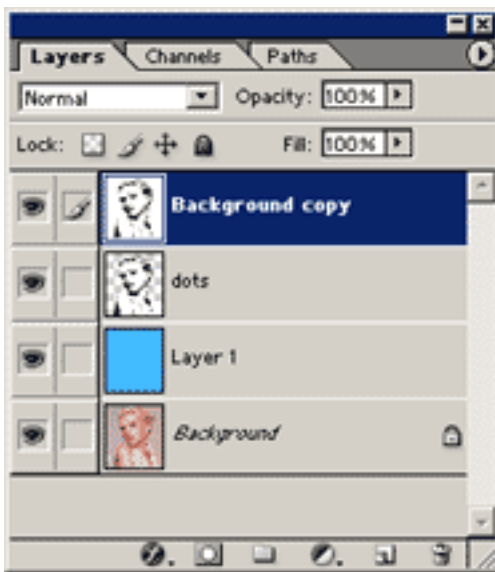
Change the Mode back to Grayscale

A dialogue box will appear...Make sure the size ratio is 1 and click OK.

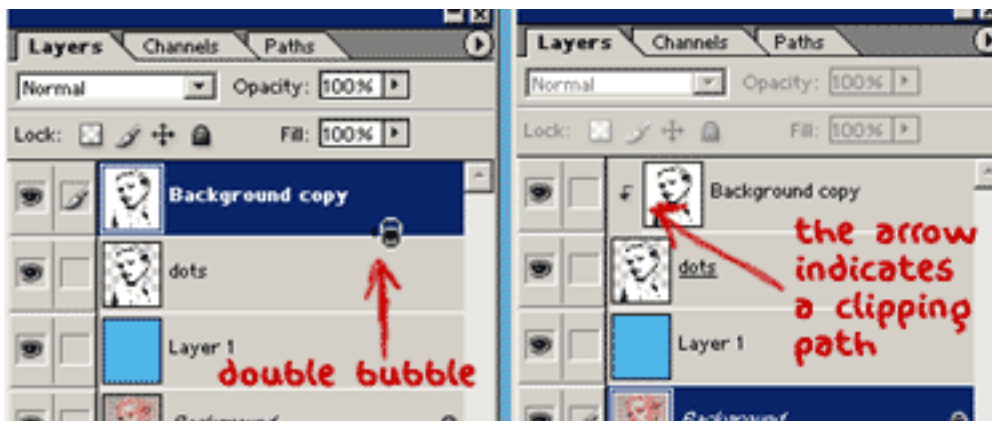
Now change the Mode back to RGB.



Your Layers Palette should look like the one shown below. You can close the second psd that you created.. there's no need for it now.

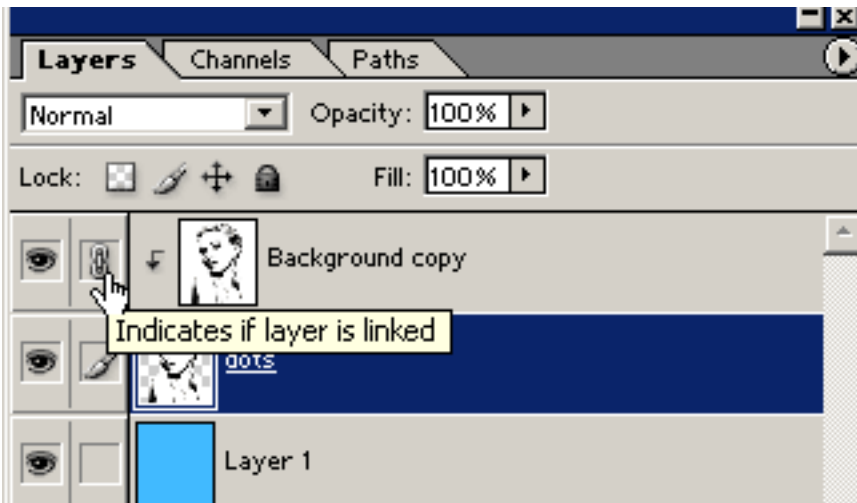


The final step for creating the dots is to create a Clipping Path between the new layer and the “dots” layer. To create a Clipping Path...hold down the ALT key and move your cursor between the 2 layers in your Layers Palette. When the cursor turns into a “double bubble” (see image below) click to create the clipping path.



Now link the “dots” and “Background copy” layer. See image below.
Merge Linked layers (Ctrl + E)

If you are using Photoshop CS or CS2 instead of linking and then merging the linked layers, after creating the clipping path simply click on the “background copy” layer in your layer palette and then Merge Down.



Your picture should now look like the one shown below..only better because it's not so small and compressed!



Now is a good time to Save (Ctrl + S) your work.

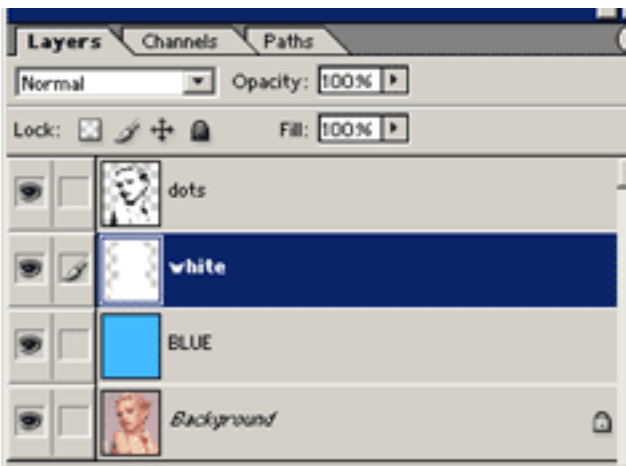
Adding Color

Having achieved a great looking half tone effect, it's time to add the color.

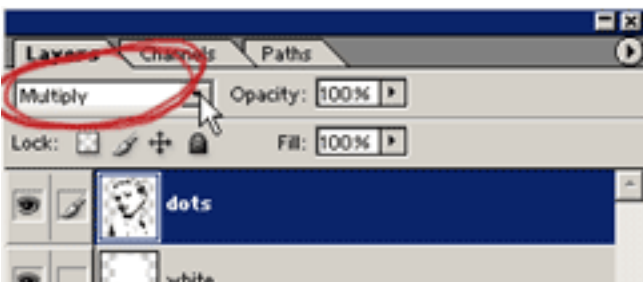
I'm going to use Fill Layers to colour this picture. Fill Layers are great if you are indecisive about your color palette and fantastic for color experimentation for pop art.

Creating Fill Layers

Duplicate the “dots” layer. Rename this layer “white” and drag it below the “dots” layer in your layer palette. Command + click on the this layer which will make a direct selection of the layer. Fill this selection with white.



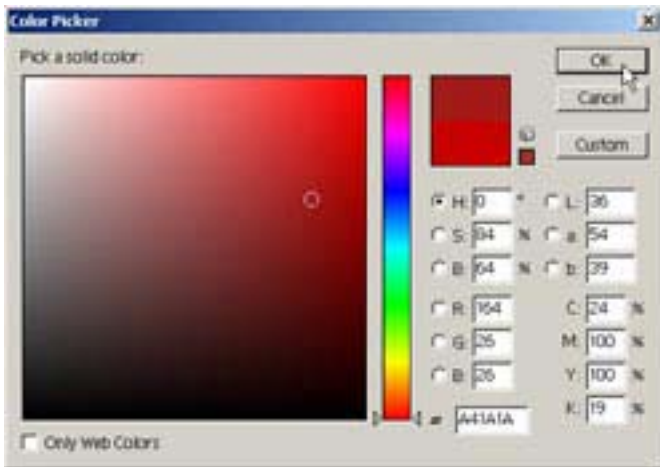
Change the blend mode on the “dots” layer to Multiply.



Click on this icon at the bottom of your Layer Palette and select Solid Color...

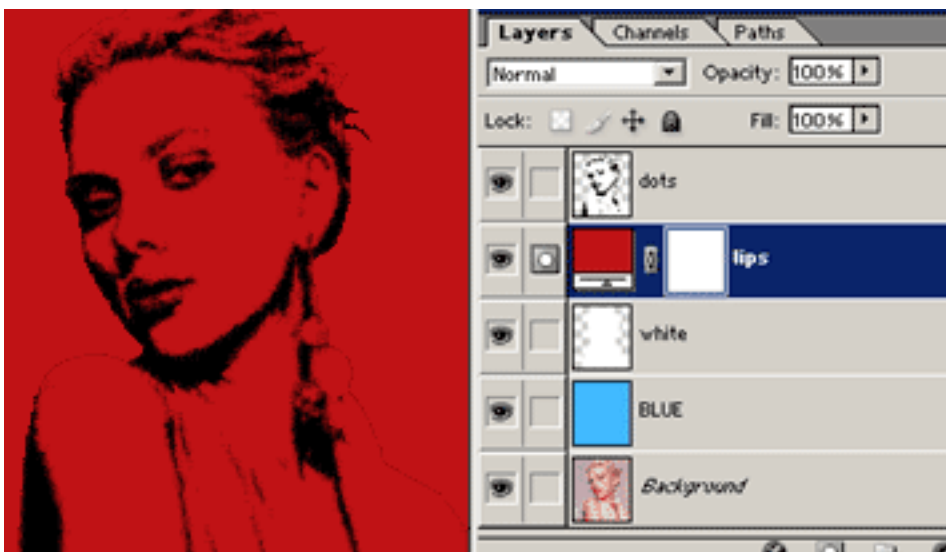


Select a color in the Color Picker dialogue box. Click OK. I've gone for a red shade to color her lips. You don't need to be too picky here because we can change the color easily later on.



The new fill layer created will appear in your layer window. Right-click and rename the layer e.g "lips" to color the lips.

Drag the new fill layer below the "dots" layer in your layer palette. See below. Your image is now totally filled with the color of the fill layer...but don't worry we are about to fix that.



Create a Clipping Path between the “lip” and “white” layer. This will ensure that you don’t color over the lines.



Change the foreground color to black. Working on this new layer mask, take your Paint Bucket Tool () and fill the “lips” layer mask black. The color disappears...this is because the color will only show up where there is white on this fill layer.

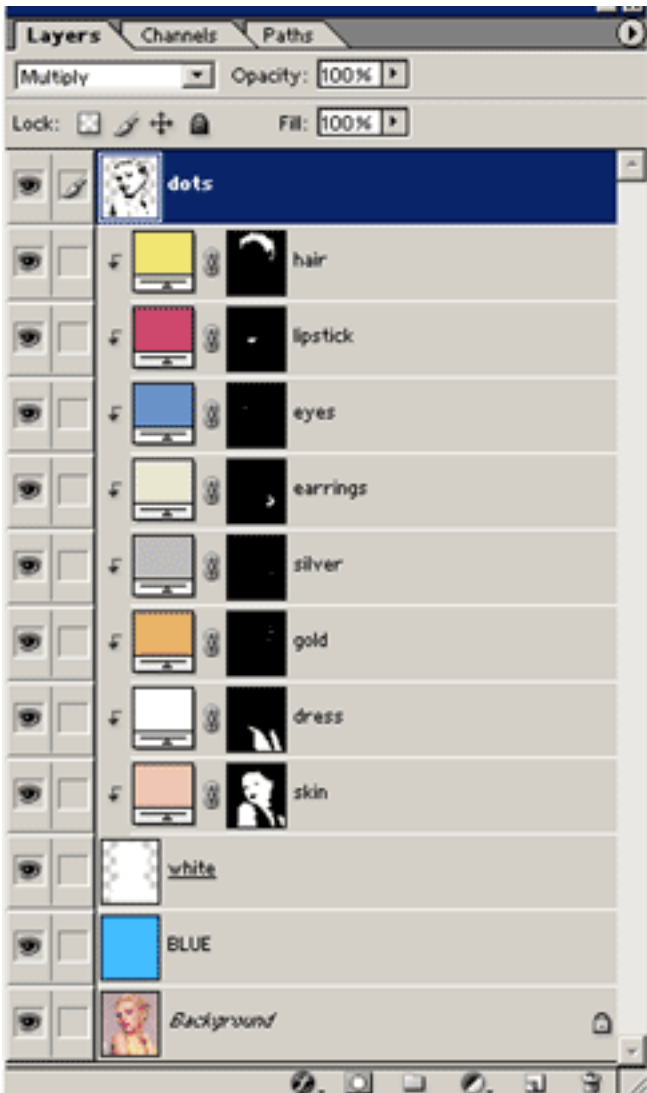
Now for the coloring. Select your eraser tool, set it to brush mode and start painting where you want the color to appear. Use a hard brush with the opacity set to 100%. Make sure that you zoom in when coloring, so that it is nice and tidy!



**Fill layers can be confusing if you haven’t used them before.

b) More Fill Layers

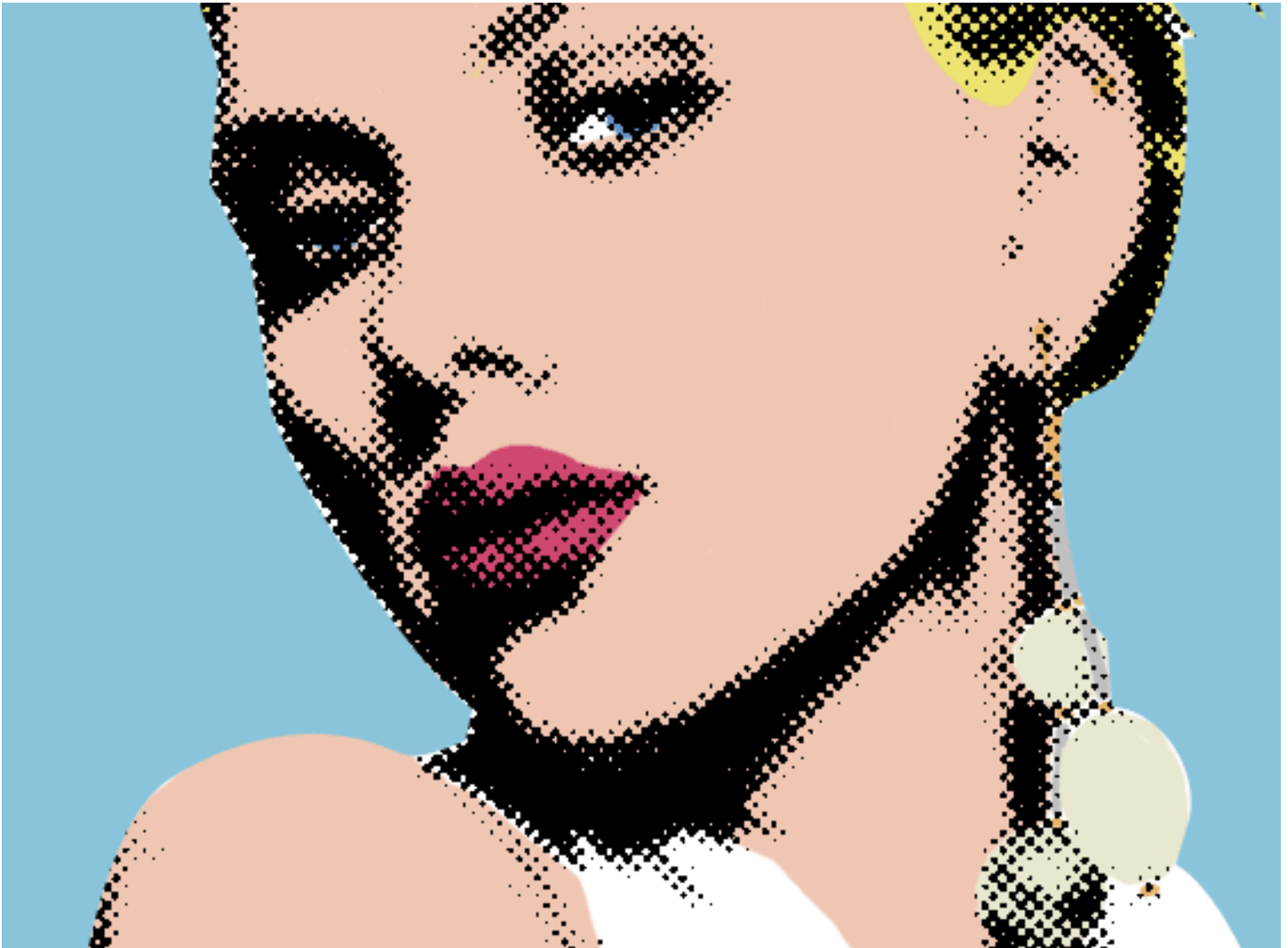
Repeat the above step creating a new fill layer for each colour/item in your picture. Below is my layers palette.



Note how I have used clipping paths on all the new fill layers.



At any time if you are unhappy with a color that you have chosen, simply double click on the Layer Thumbnail (as shown above) and re-select a color. Now you have the ability to change the color of the hair for example, to a whole new color in a second flat!!



You're pretty much finished.

You can add a caption, or a speech or thought bubble to make this a Lichtenstein inspired piece. Custom shapes have a few speech and thought bubbles to choose from. Try experimenting with the color too for something really bold.