



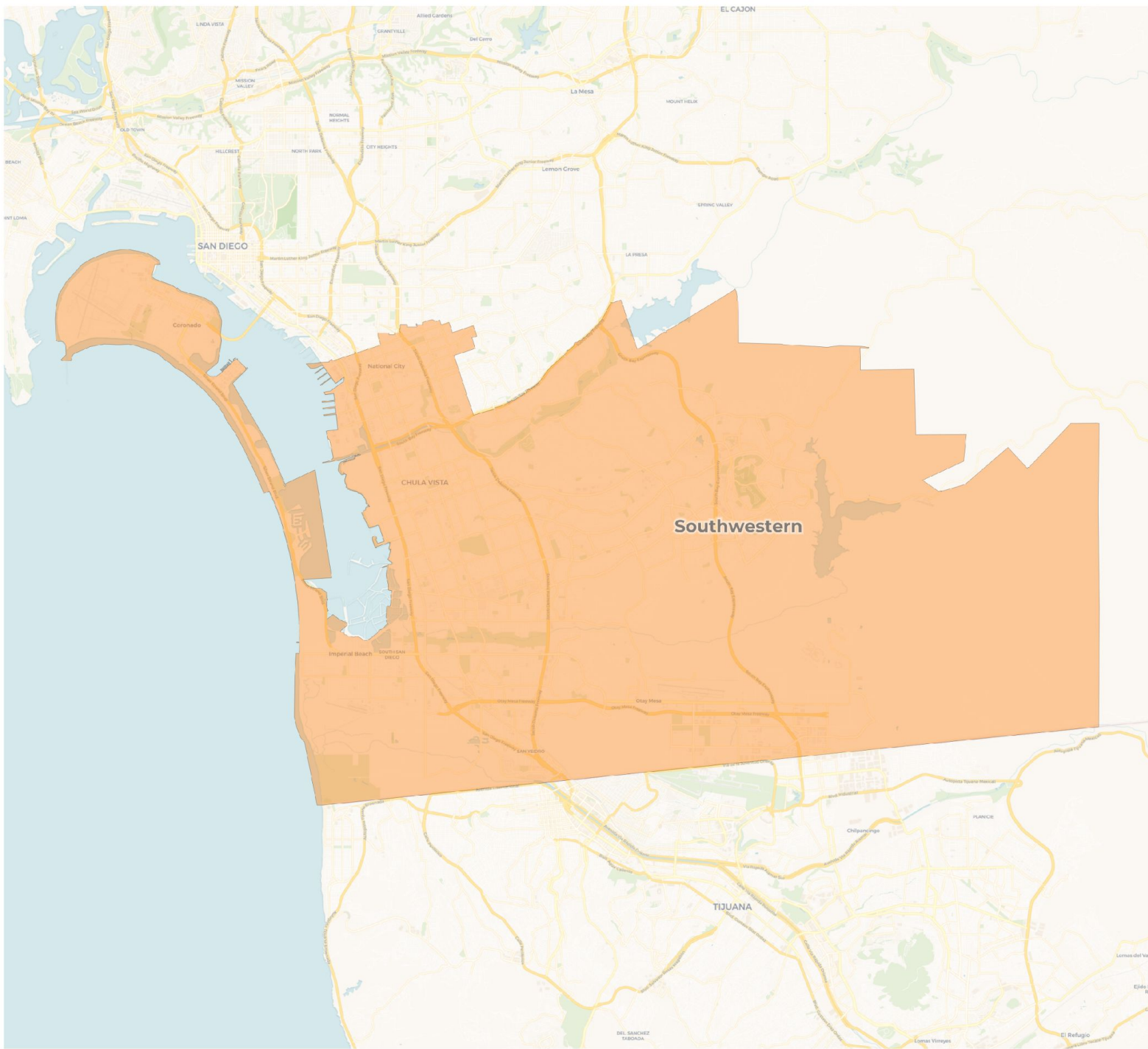
2021-22 Districting

Traditional Redistricting Principles

Preventing a Districting from Becoming a Gerrymander

There are a number of criteria that have been used nationally and upheld by courts.

- Relatively equal size – people, not citizens
- Contiguous – districts should not hop/jump
- Keep districts compact – appearance/function
- Maintain “*communities of interest*”
- Follow city/county/local government lines



2020 Census

	Southwestern
Population	511,372
Deviation	0
Deviation %	0.0%
Other	109,580
Other %	21.4%
Latino	314,481
Latino %	61.5%
Asian	65,677
Asian %	12.8%
Black	21,634
Black %	4.2%

Citizen Voting Age Population (CVAP)

	Southwestern
Total CVAP	320,000
Other CVAP	91,330
Other CVAP %	28.5%
Latino CVAP	167,077
Latino CVAP %	52.2%
Asian CVAP	44,260
Asian CVAP %	13.8%
Black CVAP	17,332
Black CVAP %	5.4%

Draft Map Plans A,B & C

Trustees were provided a packet with three consultant created plans based on traditional redistricting criteria. These maps were posted to the website for the public five days prior to tonight's Draft Map hearing.

- Each draft has been created with a less than 10% total deviation
- Each draft plan is provided with both a PDF and Online Web-based format

Draft Map Plan A

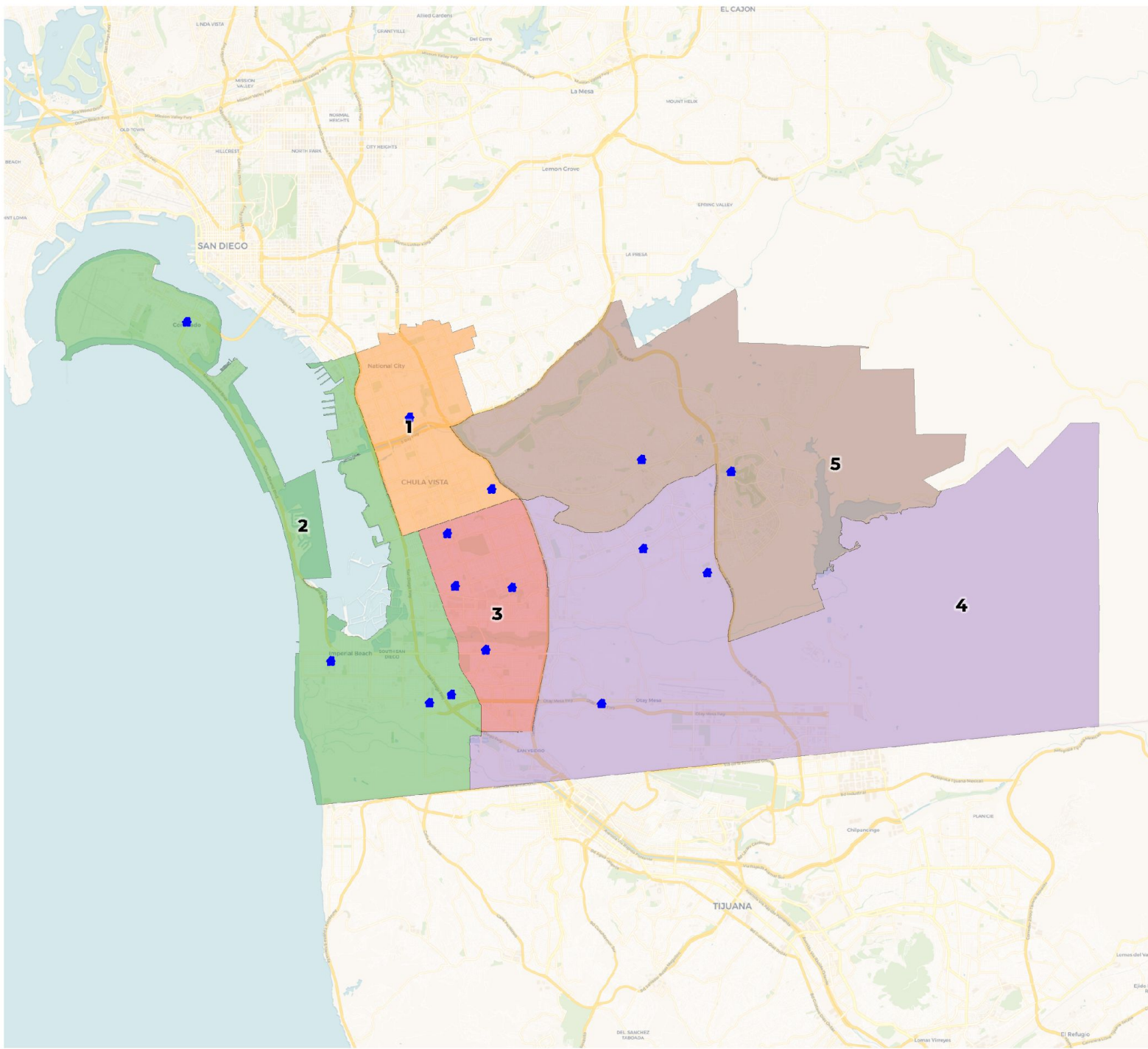
Map A was developed using the boards guidance from December as a starting point.

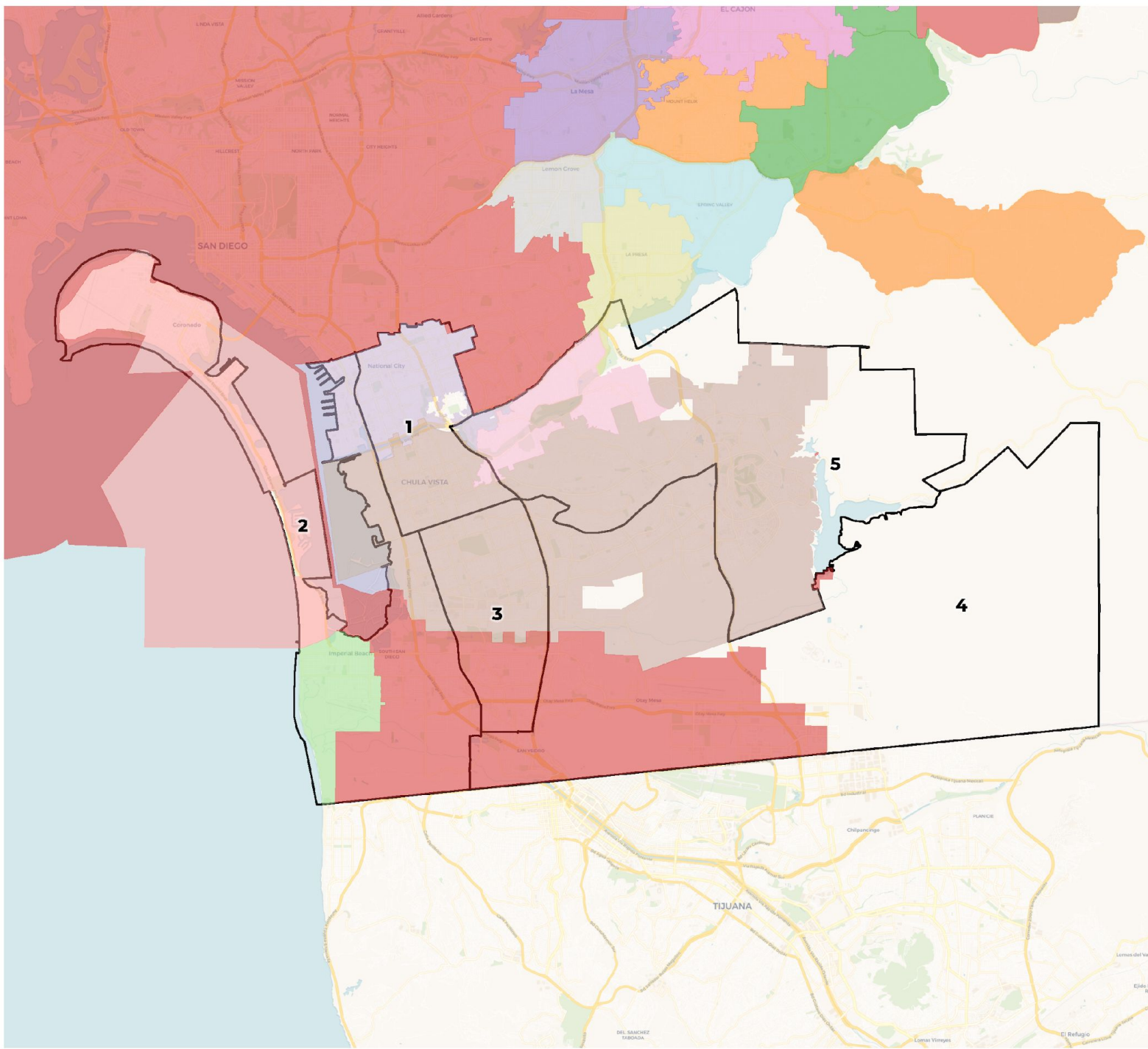
- Area 1: Sweetwater, Hilltop (HEC National City)
- Area 2: Coronado, Mar Vista, Southwest, Launch Virtual (Crown Cove Aquatic Center)
- Area 3: Chula Vista, Palomar, Castle Park, Montgomery, Options
- Area 4: San Ysidro, Otay Ranch, Olympian (HEC San Ysidro)
- Area 5: Bonita, Eastlake (Chula Vista Campus)



Southwestern CCD

Draft Plan A





2020 Census

	1	2	3	4	5
Population	100,410	100,157	101,978	102,572	106,255
Deviation	-1,864	-2,117	-296	298	3,981
Deviation %	-1.8%	-2.1%	-0.3%	0.3%	3.9%
Other	15,362	33,877	13,321	17,873	29,147
Other %	15.3%	33.8%	13.1%	17.4%	27.4%
Latino	68,712	57,075	79,640	56,374	52,680
Latino %	68.4%	57.0%	78.1%	55.0%	49.6%
Asian	12,784	5,734	6,456	21,479	19,224
Asian %	12.7%	5.7%	6.3%	20.9%	18.1%
Black	3,552	3,471	2,561	6,846	5,204
Black %	3.5%	3.5%	2.5%	6.7%	4.9%

Citizen Voting Age Population (CVAP)

	1	2	3	4	5
Total CVAP	60,022	70,319	62,188	59,016	71,230
Other CVAP	14,454	29,463	11,681	11,425	21,454
Other CVAP %	24.1%	41.9%	18.8%	19.4%	30.1%
Latino CVAP	35,105	32,326	43,177	30,016	31,278
Latino CVAP %	58.5%	46.0%	69.4%	50.9%	43.9%
Asian CVAP	7,662	4,848	4,845	13,836	14,399
Asian CVAP %	12.8%	6.9%	7.8%	23.4%	20.2%
Black CVAP	2,801	3,682	2,485	3,739	4,099
Black CVAP %	4.7%	5.2%	4.0%	6.3%	5.8%

2020 Census

	1	2	3	4	5
Population	100,410	100,157	101,978	102,572	106,255
Deviation	-1,864	-2,117	-296	298	3,981
Deviation %	-1.8%	-2.1%	-0.3%	0.3%	3.9%
Other	15,362	33,877	13,321	17,873	29,147
Other %	15.3%	Total Deviation: 6.0%			27.4%
Latino	68,712				52,680
Latino %	68.4%	57.0%	78.1%	55.0%	49.6%
Asian	12,784	5,734	6,456	21,479	19,224
Asian %	12.7%	5.7%	6.3%	20.9%	18.1%
Black	3,552	3,471	2,561	6,846	5,204
Black %	3.5%	3.5%	2.5%	6.7%	4.9%

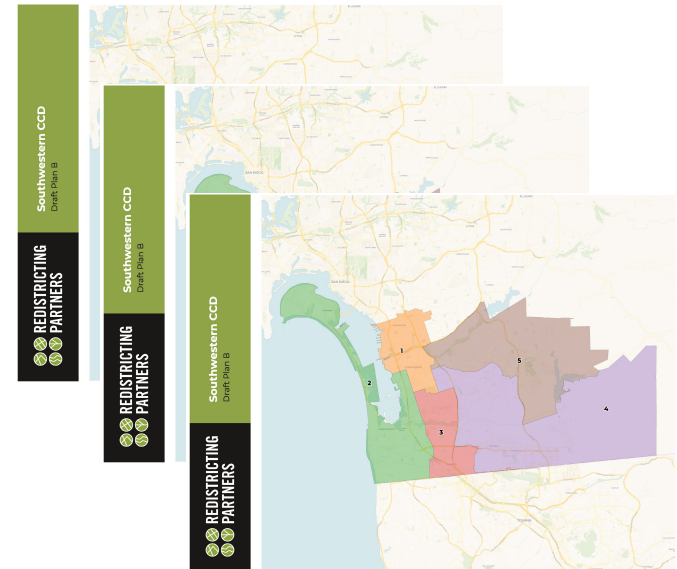
Citizen Voting Age Population (CVAP)

	1	2	3	4	5
Total CVAP	60,022	70,319	62,188	59,016	71,230
Other CVAP	14,454	29,463	11,681	11,425	21,454
Other CVAP %	24.1%	41.9%	18.8%	19.4%	30.1%
Latino CVAP	35,105	32,326	43,177	30,016	31,278
Latino CVAP %	58.5%	46.0%	69.4%	50.9%	43.9%
Asian CVAP	7,662	4,848	4,845	13,836	14,399
Asian CVAP %	12.8%	6.9%	7.8%	23.4%	20.2%
Black CVAP	2,801	3,682	2,485	3,739	4,099
Black CVAP %	4.7%	5.2%	4.0%	6.3%	5.8%

Draft Map Plan B

Map B was developed using the boards guidance from December as a starting point, keeping San Ysidro HS in Area 3.

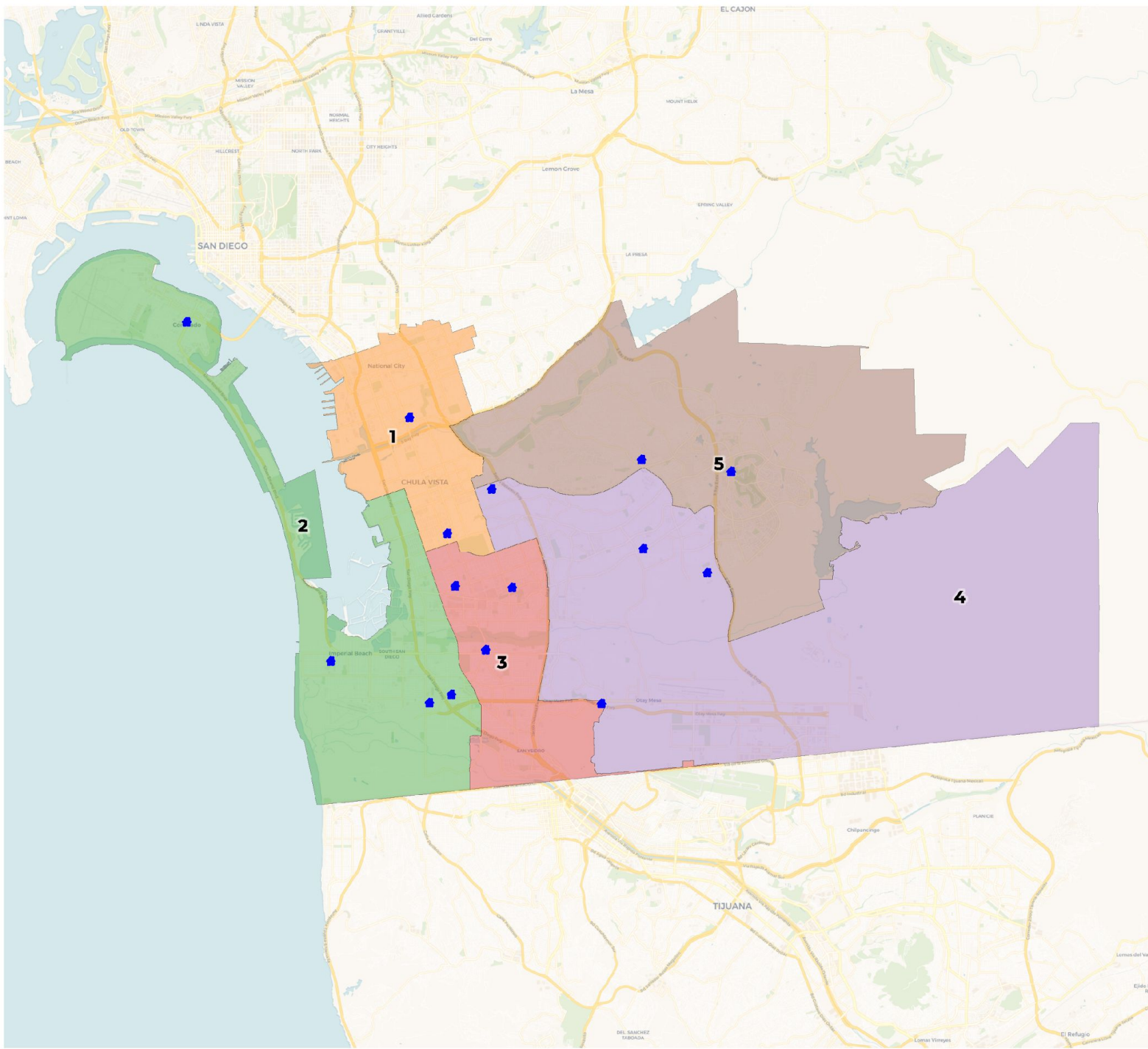
- Area 1: Sweetwater, Chula Vista (HEC National City Campus)
- Area 2: Coronado, Mar Vista, Southwest, Launch Virtual (Crown Cove Aquatic Campus)
- Area 3: Palomar, Castle Park, Montgomery, Options, San Ysidro
- Area 4: Hilltop, Otay Ranch, Olympian (HEC San Ysidro Campus)
- Area 5: Bonita, Eastlake (Chula Vista Campus)

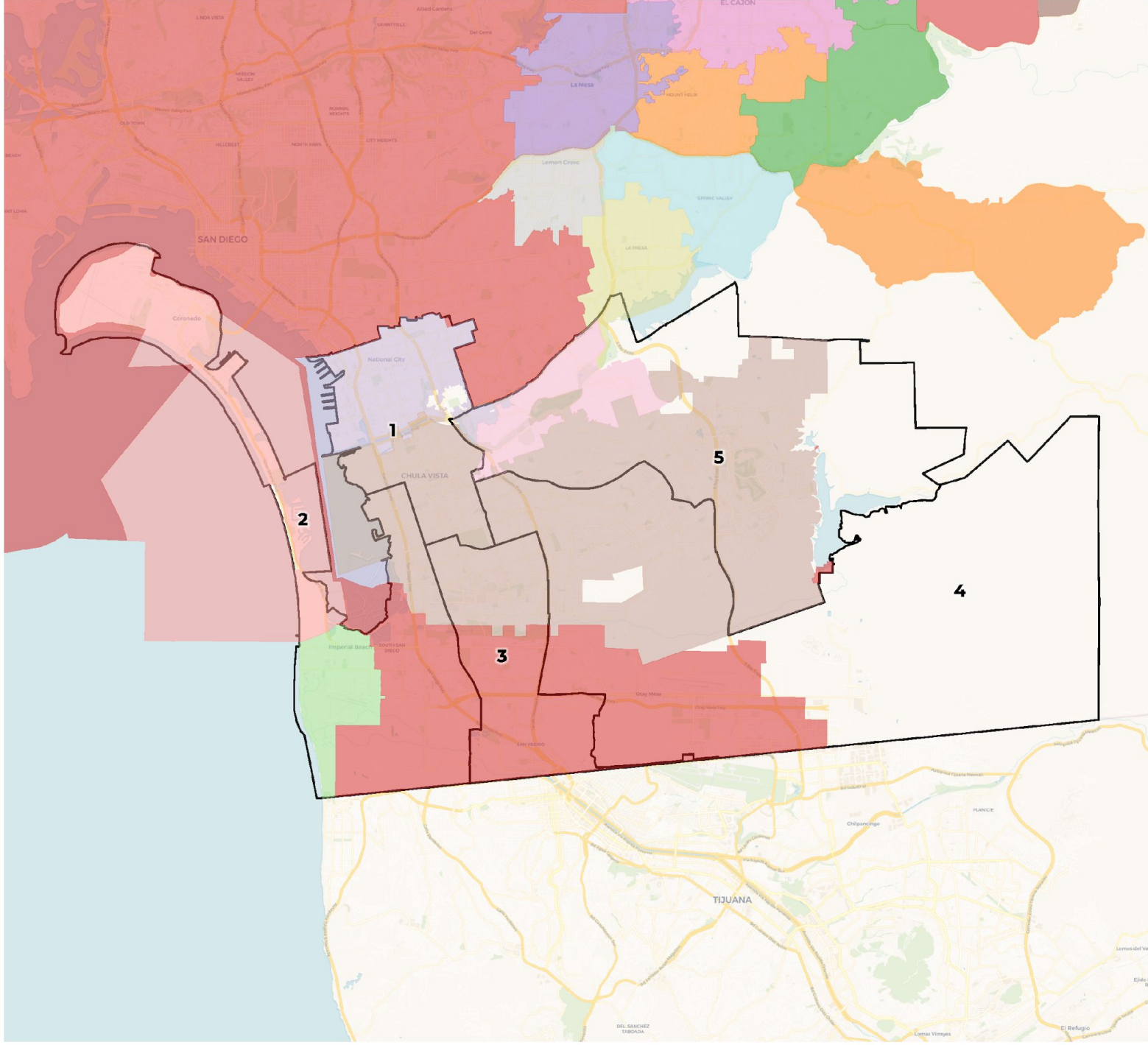




Southwestern CCD

Draft Plan B





2020 Census

	1	2	3	4	5
Population	98,719	105,888	104,017	101,523	101,225
Deviation	-3,555	3,614	1,743	-751	-1,049
Deviation %	-3.5%	3.5%	1.7%	-0.7%	-1.0%
Other	15,472	34,444	10,555	21,615	27,494
Other %	15.7%	32.5%	10.1%	21.3%	27.2%
Latino	67,002	61,758	84,795	51,311	49,615
Latino %	67.9%	58.3%	81.5%	50.5%	49.0%
Asian	12,747	5,970	6,191	21,681	19,088
Asian %	12.9%	5.6%	6.0%	21.4%	18.9%
Black	3,498	3,716	2,476	6,916	5,028
Black %	3.5%	3.5%	2.4%	6.8%	5.0%

Citizen Voting Age Population (CVAP)

	1	2	3	4	5
Total CVAP	62,211	70,612	60,422	62,305	67,225
Other CVAP	15,159	29,361	8,742	15,977	19,238
Other CVAP %	24.4%	41.6%	14.5%	25.6%	28.6%
Latino CVAP	35,733	33,373	44,447	28,554	29,795
Latino CVAP %	57.4%	47.3%	73.6%	45.8%	44.3%
Asian CVAP	7,734	4,774	4,839	13,964	14,279
Asian CVAP %	12.4%	6.8%	8.0%	22.4%	21.2%
Black CVAP	3,585	3,104	2,394	3,810	3,913
Black CVAP %	5.8%	4.4%	4.0%	6.1%	5.8%

2020 Census

	1	2	3	4	5
Population	98,719	105,888	104,017	101,523	101,225
Deviation	-3,555	3,614	1,743	-751	-1,049
Deviation %	-3.5%	3.5%	1.7%	-0.7%	-1.0%
Other	15,472	34,444	10,555	21,615	27,494
Other %	15.7%	Total Deviation: 7.0%		21.3%	27.2%
Latino	67,002			51,311	49,615
Latino %	67.9%	58.3%	81.5%	50.5%	49.0%
Asian	12,747	5,970	6,191	21,681	19,088
Asian %	12.9%	5.6%	6.0%	21.4%	18.9%
Black	3,498	3,716	2,476	6,916	5,028
Black %	3.5%	3.5%	2.4%	6.8%	5.0%

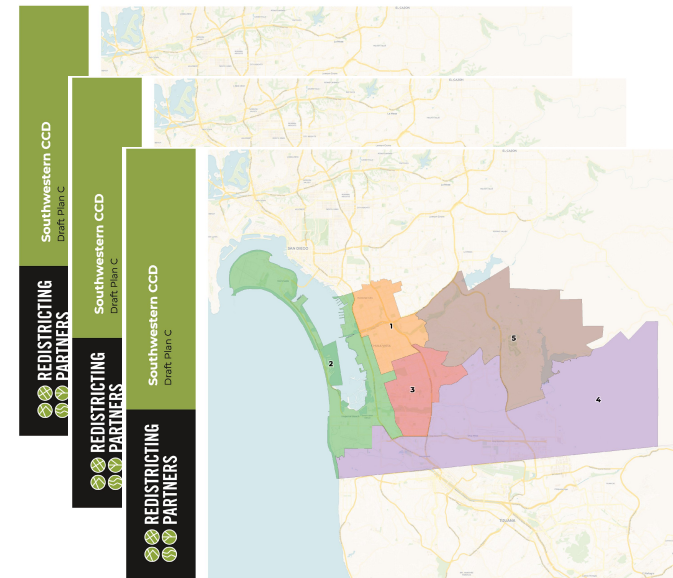
Citizen Voting Age Population (CVAP)

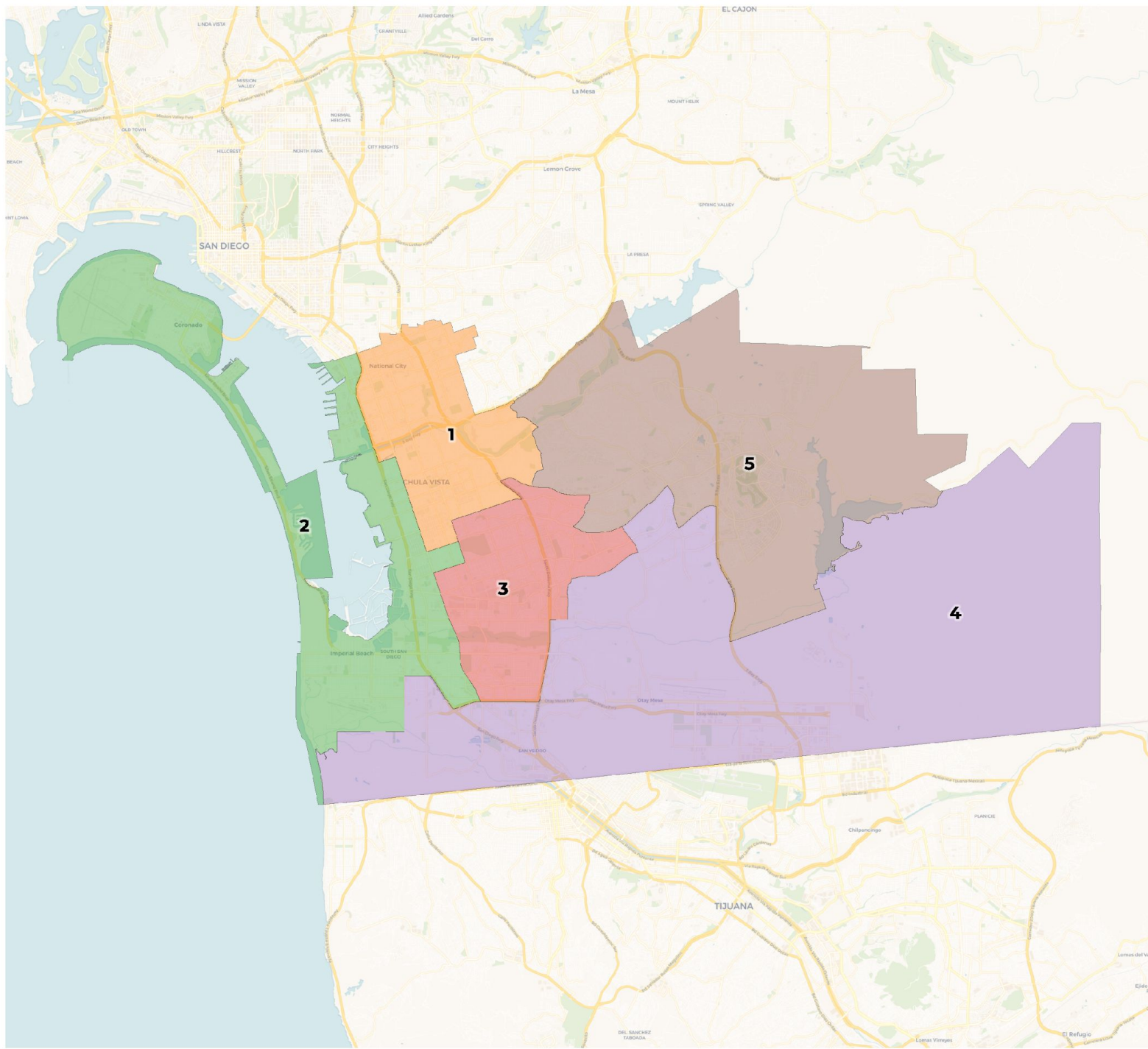
	1	2	3	4	5
Total CVAP	62,211	70,612	60,422	62,305	67,225
Other CVAP	15,159	29,361	8,742	15,977	19,238
Other CVAP %	24.4%	41.6%	14.5%	25.6%	28.6%
Latino CVAP	35,733	33,373	44,447	28,554	29,795
Latino CVAP %	57.4%	47.3%	73.6%	45.8%	44.3%
Asian CVAP	7,734	4,774	4,839	13,964	14,279
Asian CVAP %	12.4%	6.8%	8.0%	22.4%	21.2%
Black CVAP	3,585	3,104	2,394	3,810	3,913
Black CVAP %	5.8%	4.4%	4.0%	6.1%	5.8%

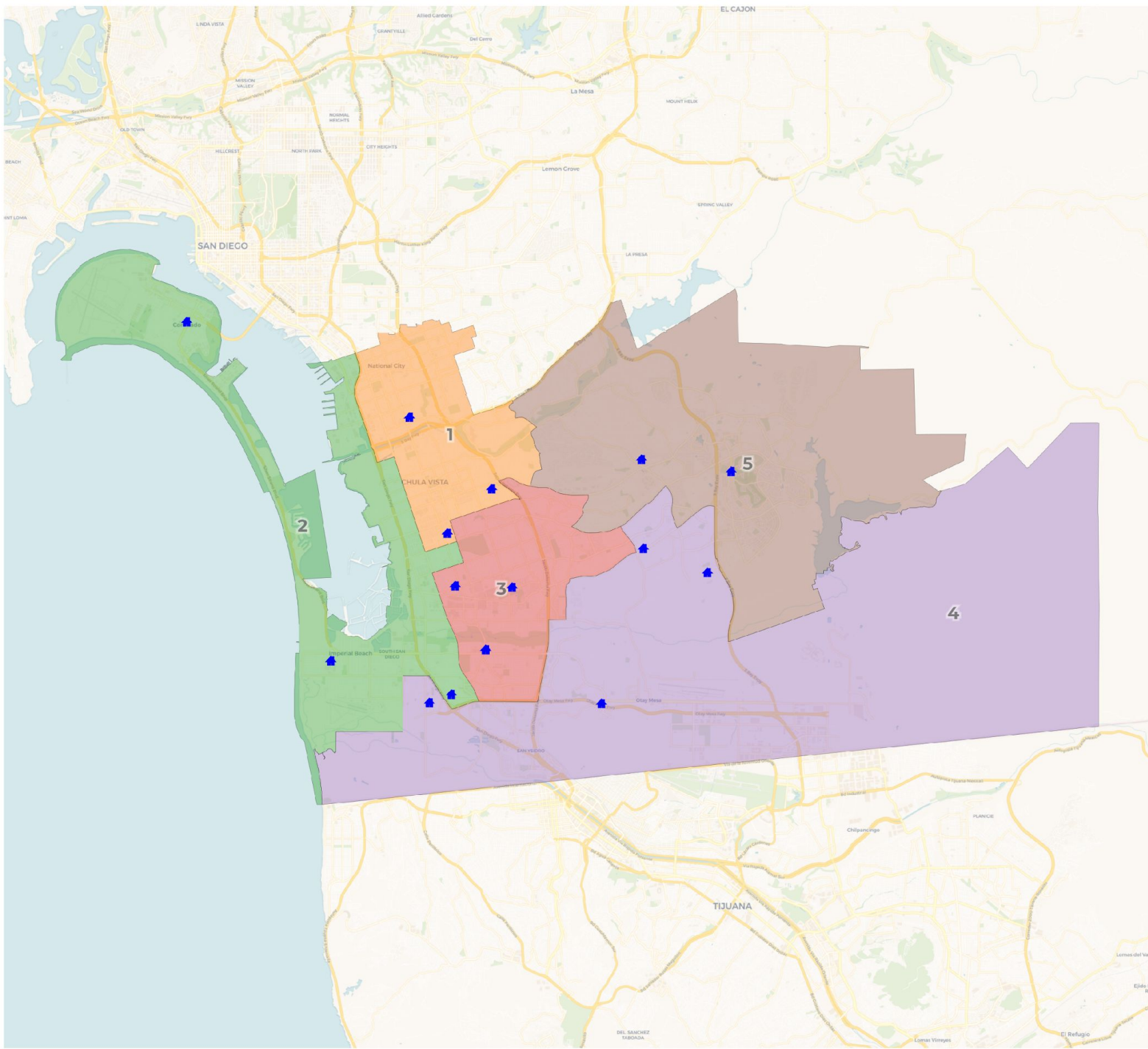
Draft Map Plan C

Map C was developed using Map A as a starting point, and keeping border communities together.

- Area 1 Sweetwater, Chula Vista, Hilltop (HEC National City Campus)
- Area 2: Coronado, Mar Vista, Launch Virtual Academy (Crown Cove Aquatic Center Campus)
- Area 3: Palomar, Castle Park, Montgomery, Options Secondary
- Area 4: Otay Ranch, San Ysidro, Olympian (HEC San Ysidro Campus)
- Area 5 Eastlake, Bonita (Chula Vista Campus)





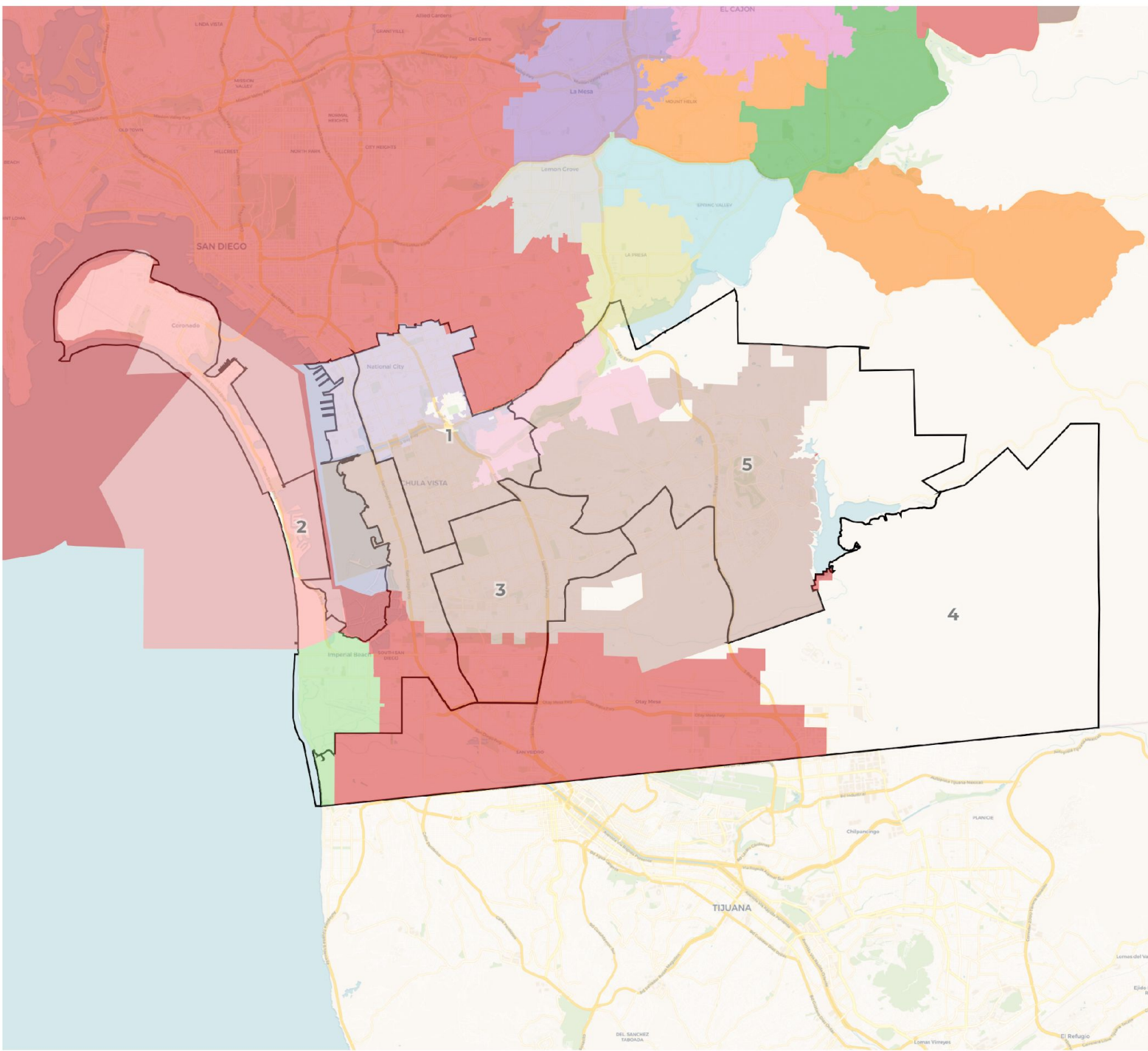




**REDISTRICTING
PARTNERS**

Southwestern CCD: Draft Map C

Overlay with cities



2020 Census

	1	2	3	4	5
Population	100,539	98,765	105,963	101,306	104,799
Deviation	-1,735	-3,509	3,689	-968	2,525
Deviation %	-1.7%	-3.4%	3.6%	-0.9%	2.5%
Other	16,583	34,364	16,817	13,589	28,227
Other %	16.5%	34.8%	15.9%	13.4%	26.9%
Latino	66,892	55,539	75,038	65,718	51,294
Latino %	66.5%	56.2%	70.8%	64.9%	48.9%
Asian	13,559	5,079	11,045	16,010	19,984
Asian %	13.5%	5.1%	10.4%	15.8%	19.1%
Black	3,505	3,783	3,063	5,989	5,294
Black %	3.5%	3.8%	2.9%	5.9%	5.1%

Citizen Voting Age Population (CVAP)

	1	2	3	4	5
Total CVAP	62,674	65,986	66,617	57,889	69,609
Other CVAP	15,718	29,175	14,709	9,212	19,663
Other CVAP %	25.1%	44.2%	22.1%	15.9%	28.2%
Latino CVAP	36,012	28,787	41,244	34,998	30,861
Latino CVAP %	57.5%	43.6%	61.9%	60.5%	44.3%
Asian CVAP	8,015	4,312	7,998	10,209	15,056
Asian CVAP %	12.8%	6.5%	12.0%	17.6%	21.6%
Black CVAP	2,929	3,712	2,666	3,470	4,029
Black CVAP %	4.7%	5.6%	4.0%	6.0%	5.8%

2020 Census

	1	2	3	4	5
Population	100,539	98,765	105,963	101,306	104,799
Deviation	-1,735	-3,509	3,689	-968	2,525
Deviation %	-1.7%	-3.4%	3.6%	-0.9%	2.5%
Other	16,583	34,364	16,817	13,589	28,227
Other %	16.5%	Total Deviation: 7.0%			26.9%
Latino	66,892				51,294
Latino %	66.5%	56.2%	70.8%	64.9%	48.9%
Asian	13,559	5,079	11,045	16,010	19,984
Asian %	13.5%	5.1%	10.4%	15.8%	19.1%
Black	3,505	3,783	3,063	5,989	5,294
Black %	3.5%	3.8%	2.9%	5.9%	5.1%

Citizen Voting Age Population (CVAP)

	1	2	3	4	5
Total CVAP	62,674	65,986	66,617	57,889	69,609
Other CVAP	15,718	29,175	14,709	9,212	19,663
Other CVAP %	25.1%	44.2%	22.1%	15.9%	28.2%
Latino CVAP	36,012	28,787	41,244	34,998	30,861
Latino CVAP %	57.5%	43.6%	61.9%	60.5%	44.3%
Asian CVAP	8,015	4,312	7,998	10,209	15,056
Asian CVAP %	12.8%	6.5%	12.0%	17.6%	21.6%
Black CVAP	2,929	3,712	2,666	3,470	4,029
Black CVAP %	4.7%	5.6%	4.0%	6.0%	5.8%

Districting Process

Timeline and Hearing Themes

- | | |
|---------|--|
| Jan. 24 | 1 st Map Hearing: Presentation on draft maps with input from the public and Board |
| Feb. 21 | 2 nd Map Hearing: Presentation of updated draft maps with input from the public and Board |
| Mar. 14 | Final Map Adoption Hearing: Approval of final map |

Traditional Redistricting Principles

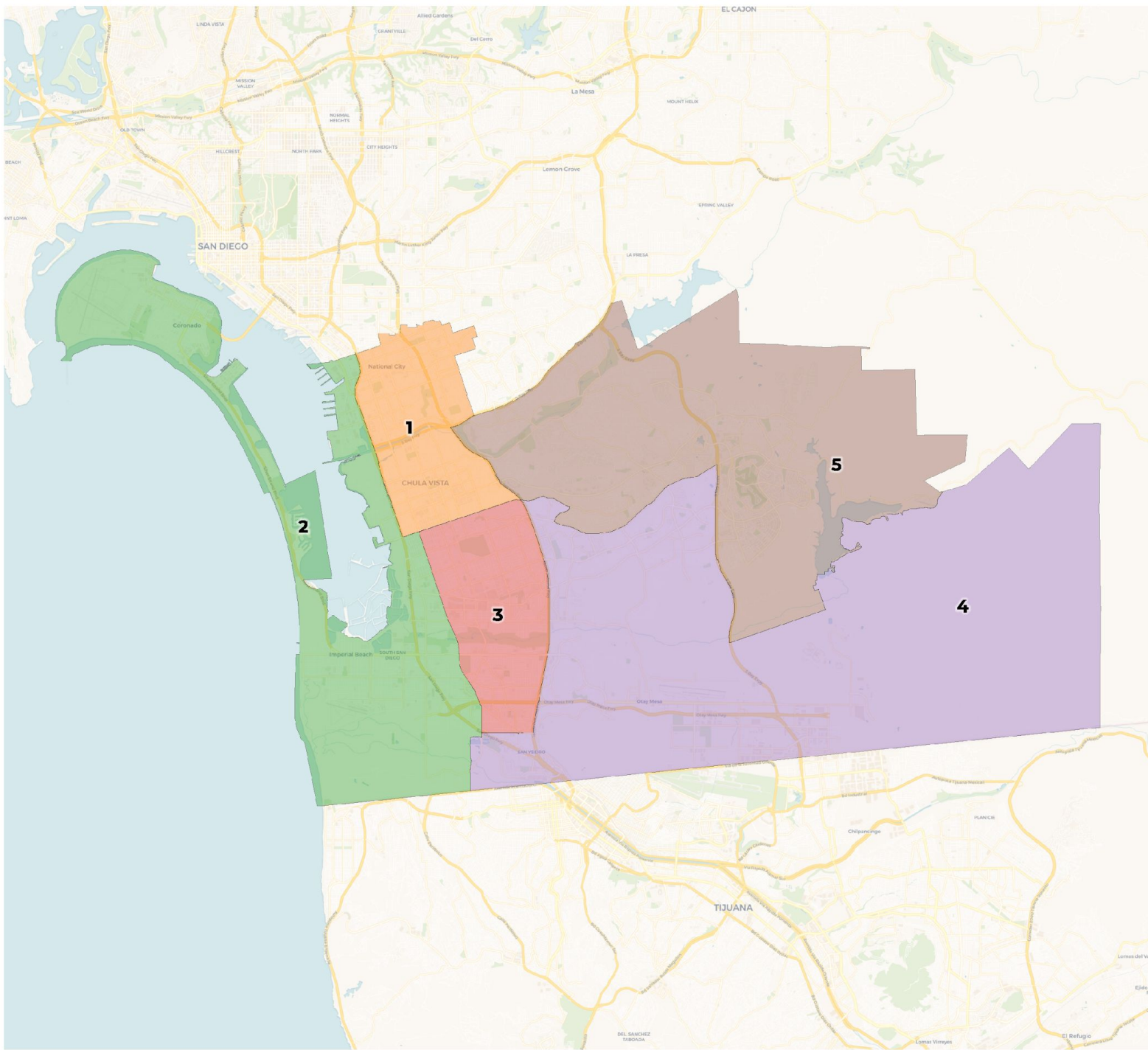
Preventing a Districting from Becoming a Gerrymander

There are a number of criteria that have been used nationally and upheld by courts.

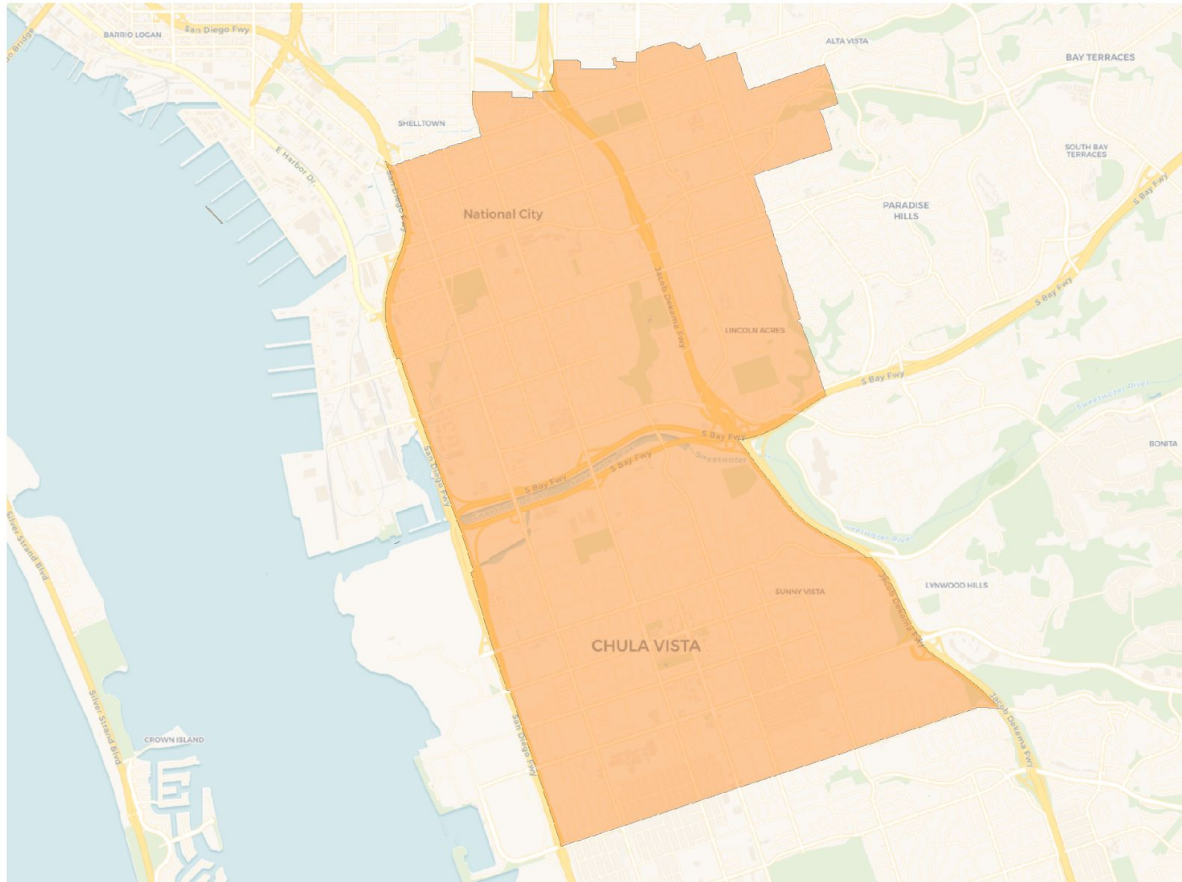
- Relatively equal size – people, not citizens
- Contiguous – districts should not hop/jump
- Keep districts compact – appearance/function
- Maintain “*communities of interest*”
- Follow city/county/local government lines



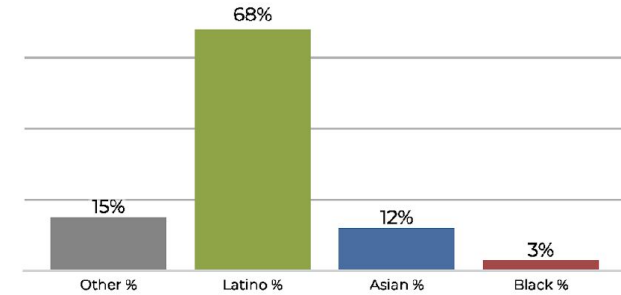
**REDISTRICTING
PARTNERS**



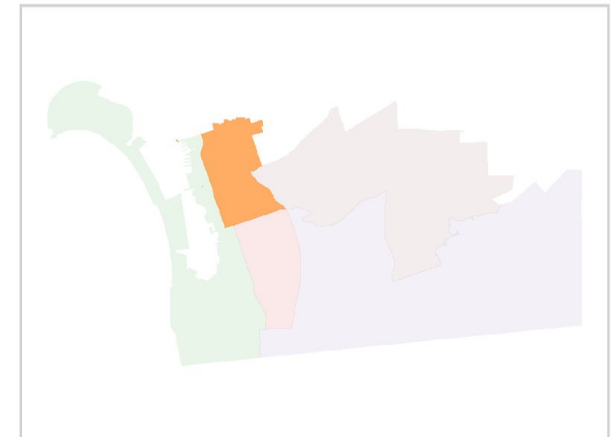
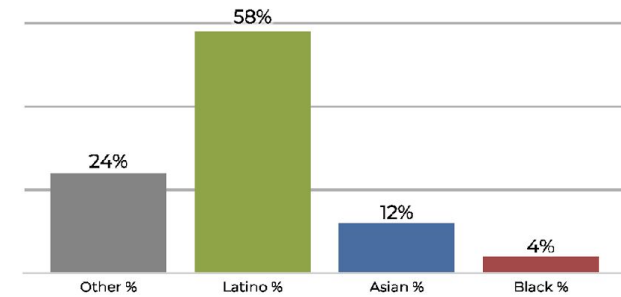
District 1



2020 Census

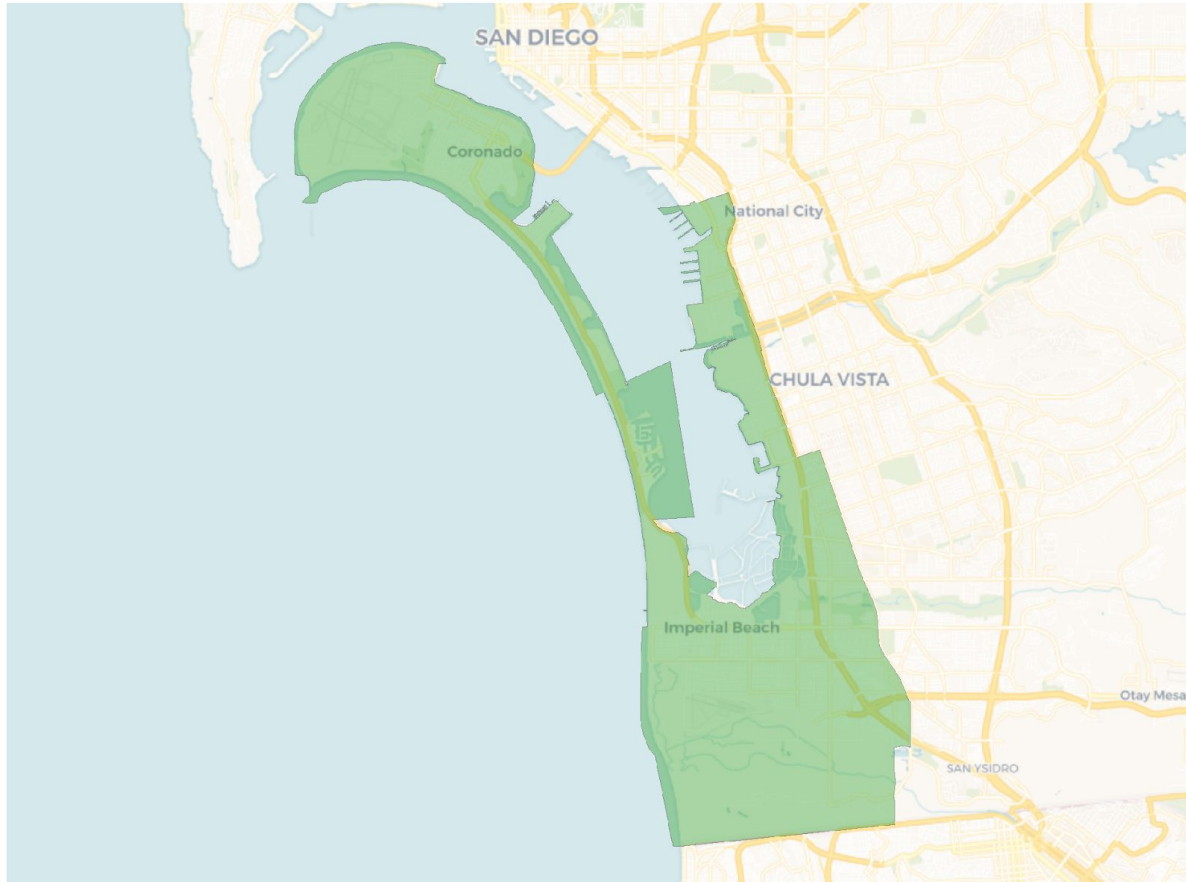


Citizen Voting Age Population

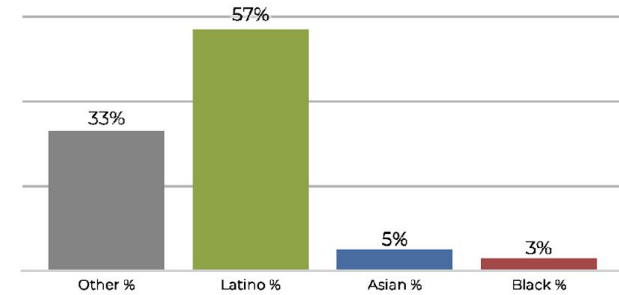


Population	Deviation	Deviation %	Other	Other %	Latino	Latino %	Asian	Asian %	Black	Black %
100,410	-1,864	-1.8%	15,362	15.3%	68,712	68.4%	12,784	12.7%	3,552	3.5%
Total CVAP	Other CVAP	Other CVAP %	Latino CVAP	Latino CVAP %	Asian CVAP	Asian CVAP %	Black CVAP	Black CVAP %		
60,022	14,454	24.1%	35,105	58.5%	7,662	12.8%	2,801	4.7%		

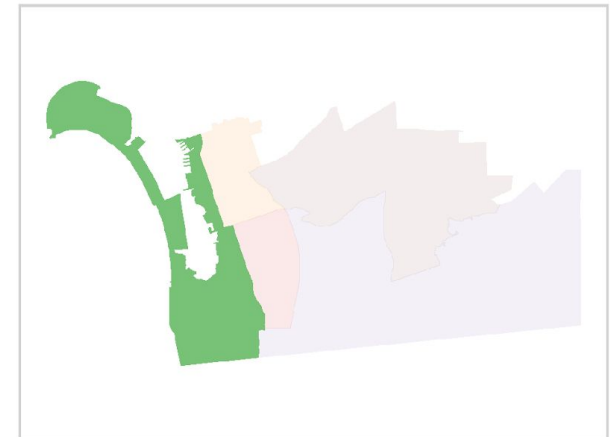
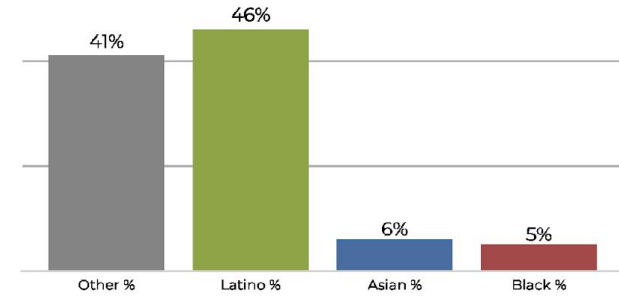
District 2



2020 Census

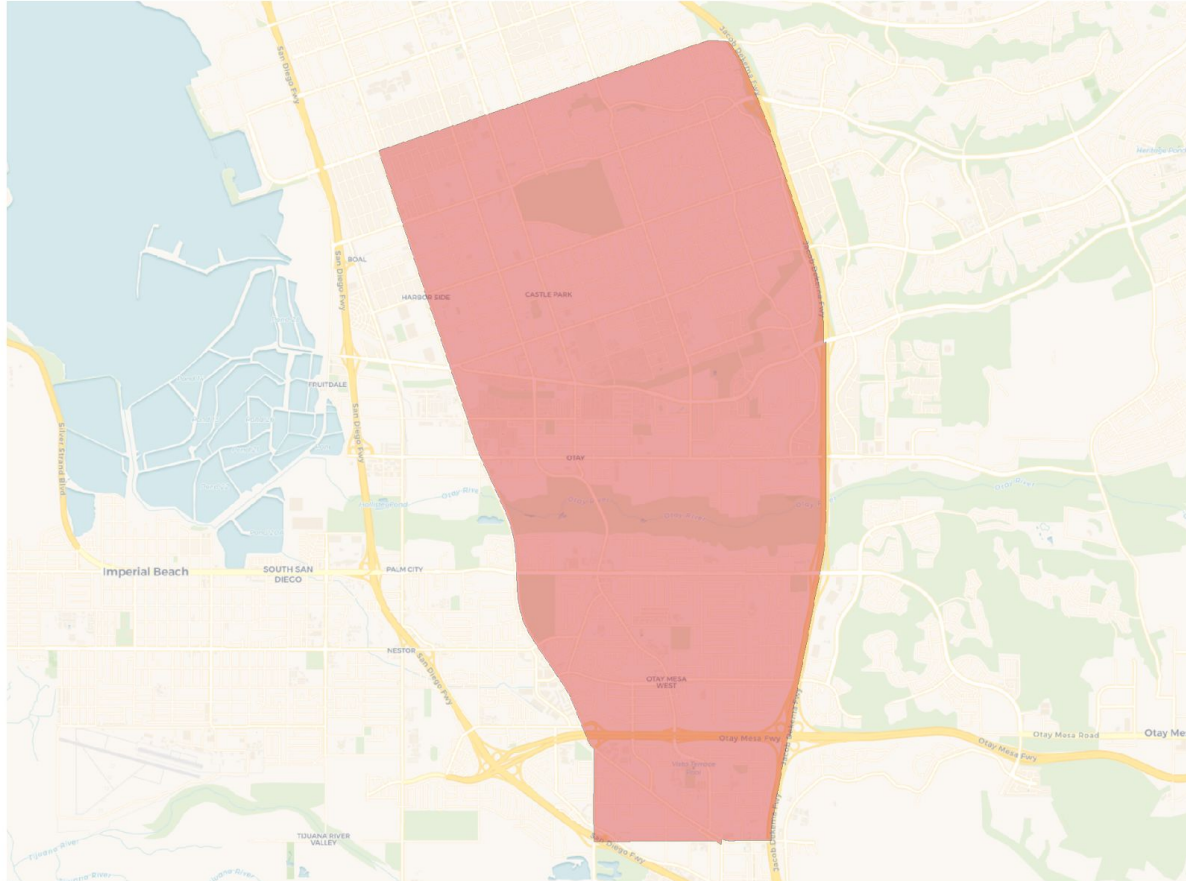


Citizen Voting Age Population

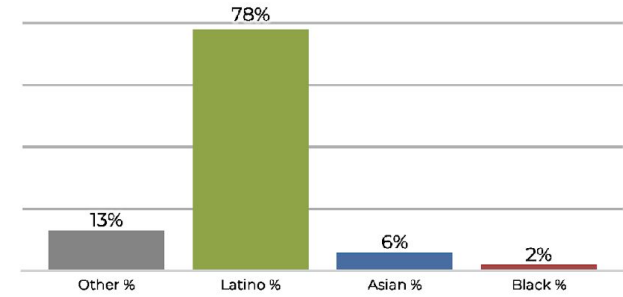


Population	Deviation	Deviation %	Other	Other %	Latino	Latino %	Asian	Asian %	Black	Black %
100,157	-2,117	-2.1%	33,877	33.8%	57,075	57.0%	5,734	5.7%	3,471	3.5%
Total CVAP	Other CVAP	Other CVAP %	Latino CVAP	Latino CVAP %	Asian CVAP	Asian CVAP %	Black CVAP	Black CVAP %		
70,319	29,463	41.9%	32,326	46.0%	4,848	6.9%	3,682	5.2%		

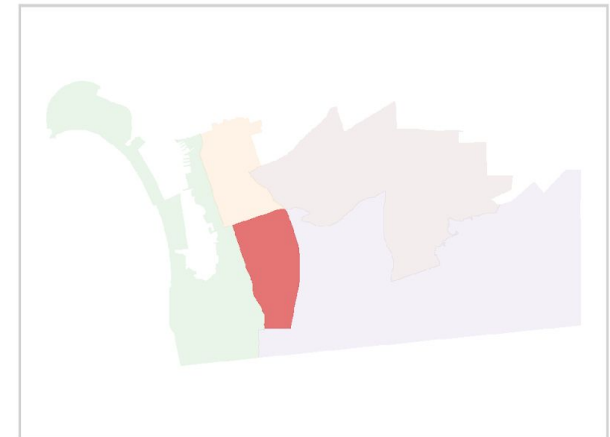
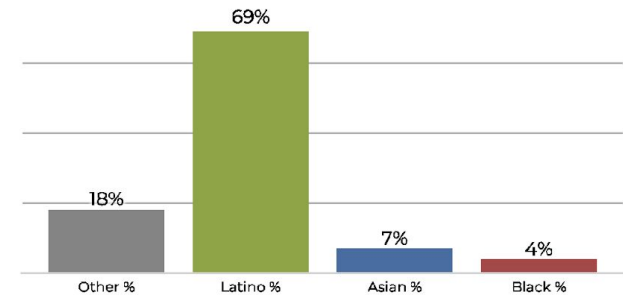
District 3



2020 Census

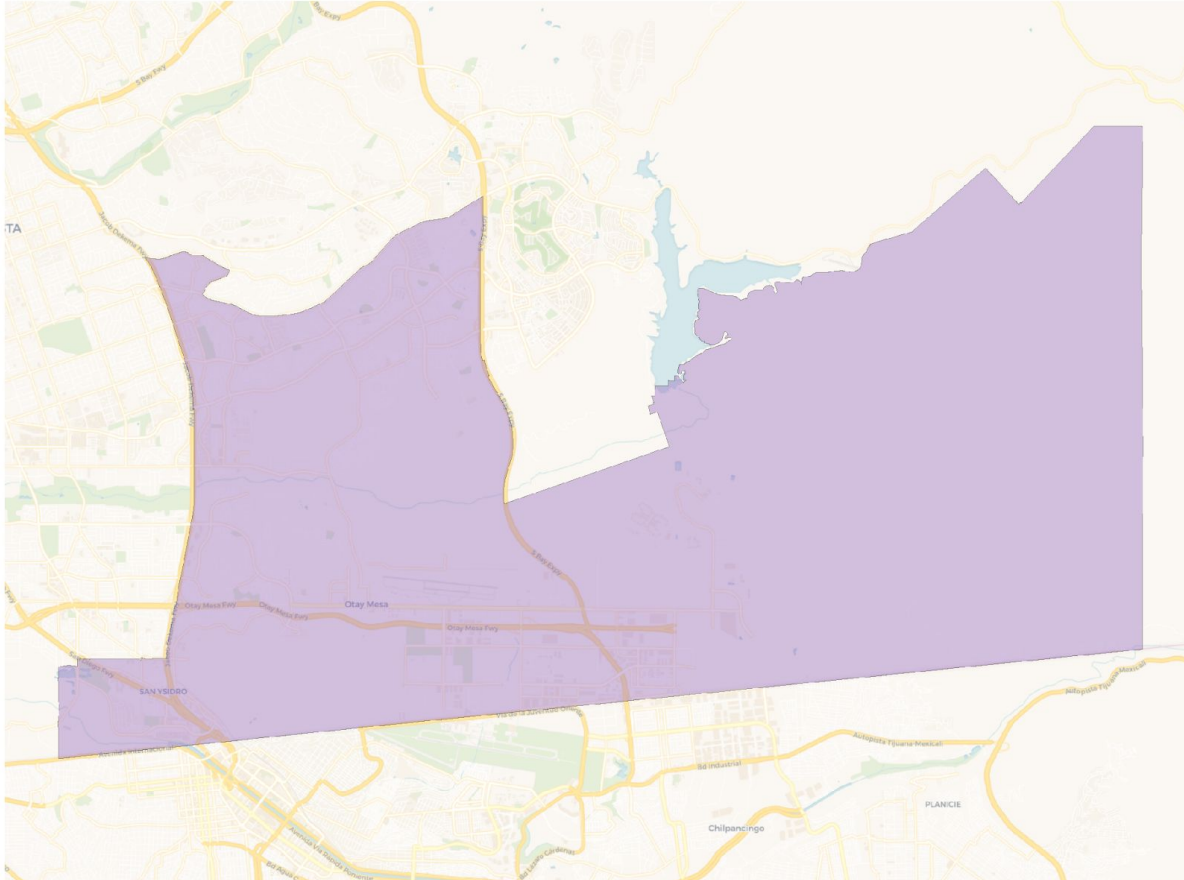


Citizen Voting Age Population

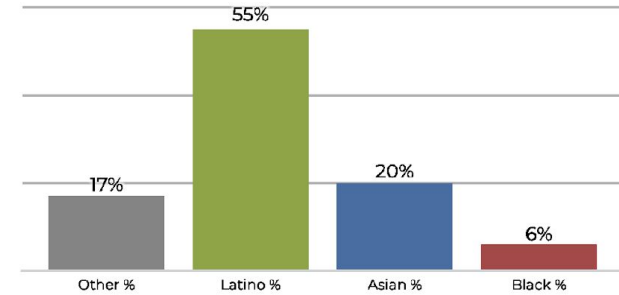


Population	Deviation	Deviation %	Other	Other %	Latino	Latino %	Asian	Asian %	Black	Black %
101,978	-296	-0.3%	13,321	13.1%	79,640	78.1%	6,456	6.3%	2,561	2.5%
Total CVAP	Other CVAP	Other CVAP %	Latino CVAP	Latino CVAP %	Asian CVAP	Asian CVAP %	Black CVAP	Black CVAP %		
62,188	11,681	18.8%	43,177	69.4%	4,845	7.8%	2,485	4.0%		

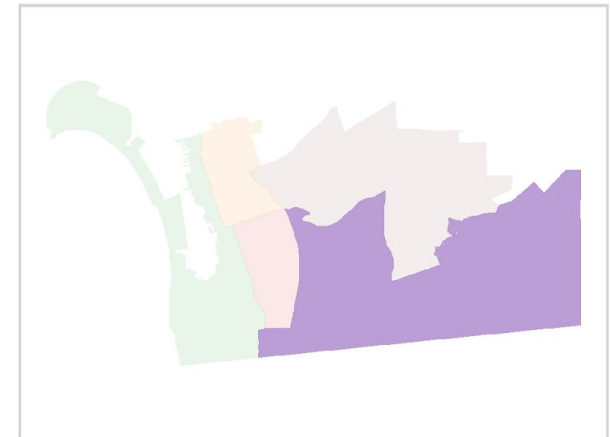
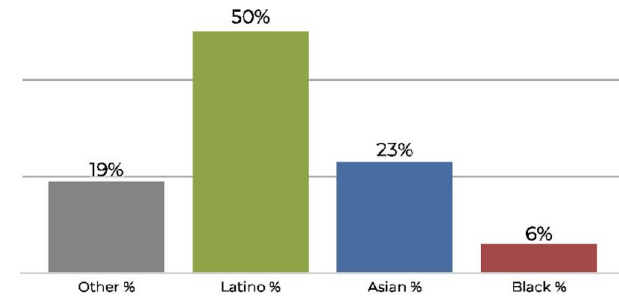
District 4



2020 Census

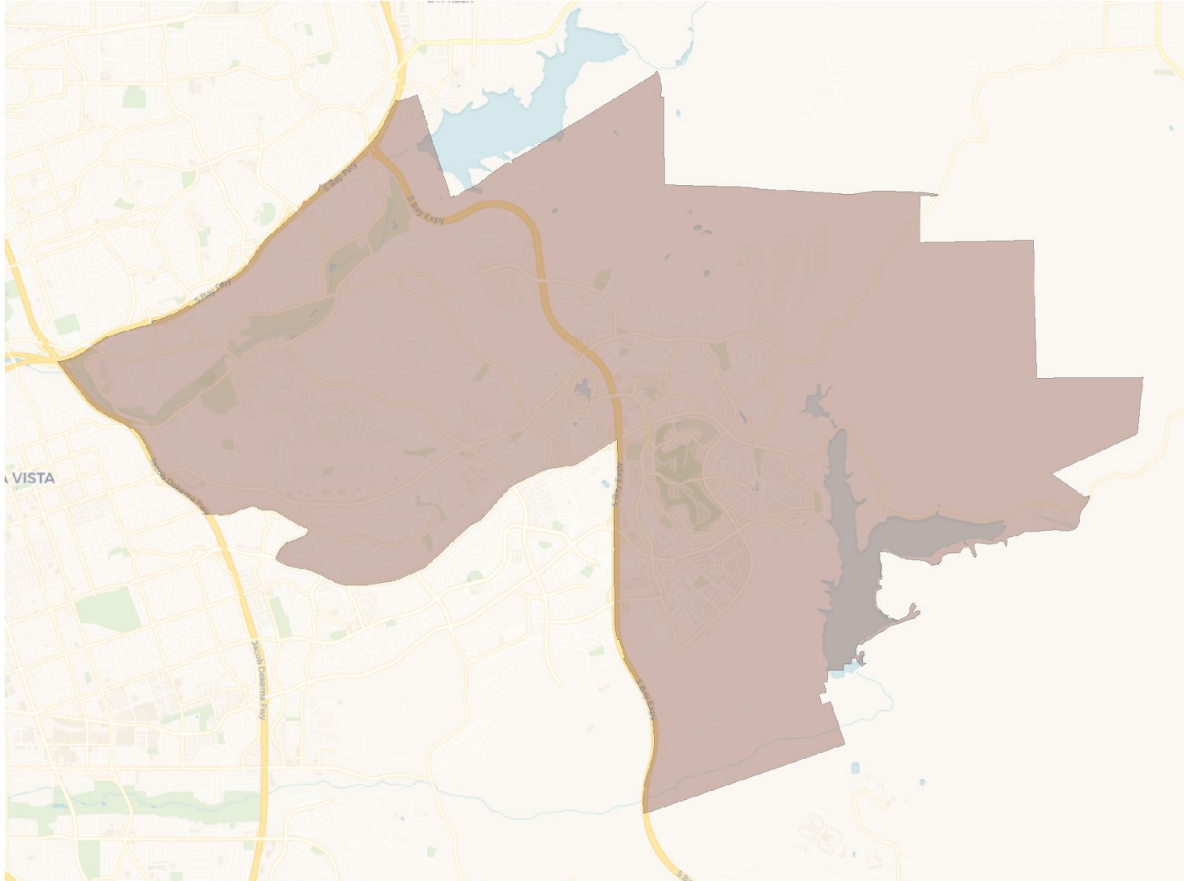


Citizen Voting Age Population

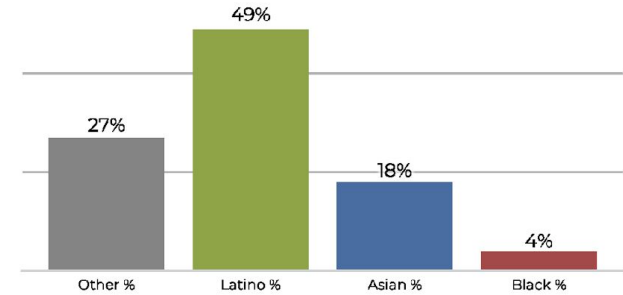


Population	Deviation	Deviation %	Other	Other %	Latino	Latino %	Asian	Asian %	Black	Black %
102,572	298	0.3%	17,873	17.4%	56,374	55.0%	21,479	20.9%	6,846	6.7%
Total CVAP	Other CVAP	Other CVAP %	Latino CVAP	Latino CVAP %	Asian CVAP	Asian CVAP %	Black CVAP	Black CVAP %		
59,016	11,425	19.4%	30,016	50.9%	13,836	23.4%	3,739	6.3%		

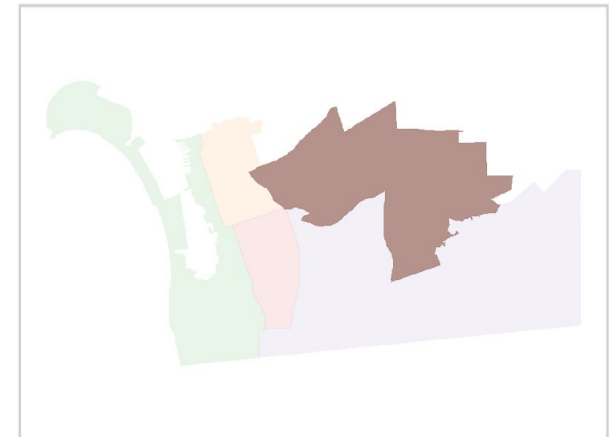
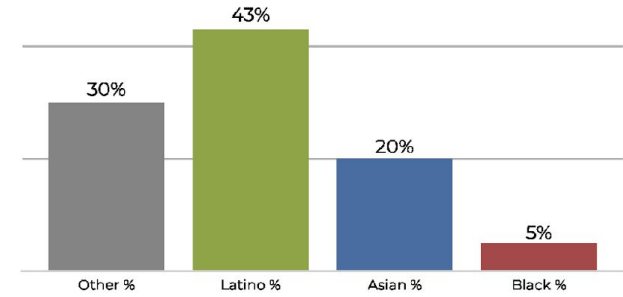
District 5



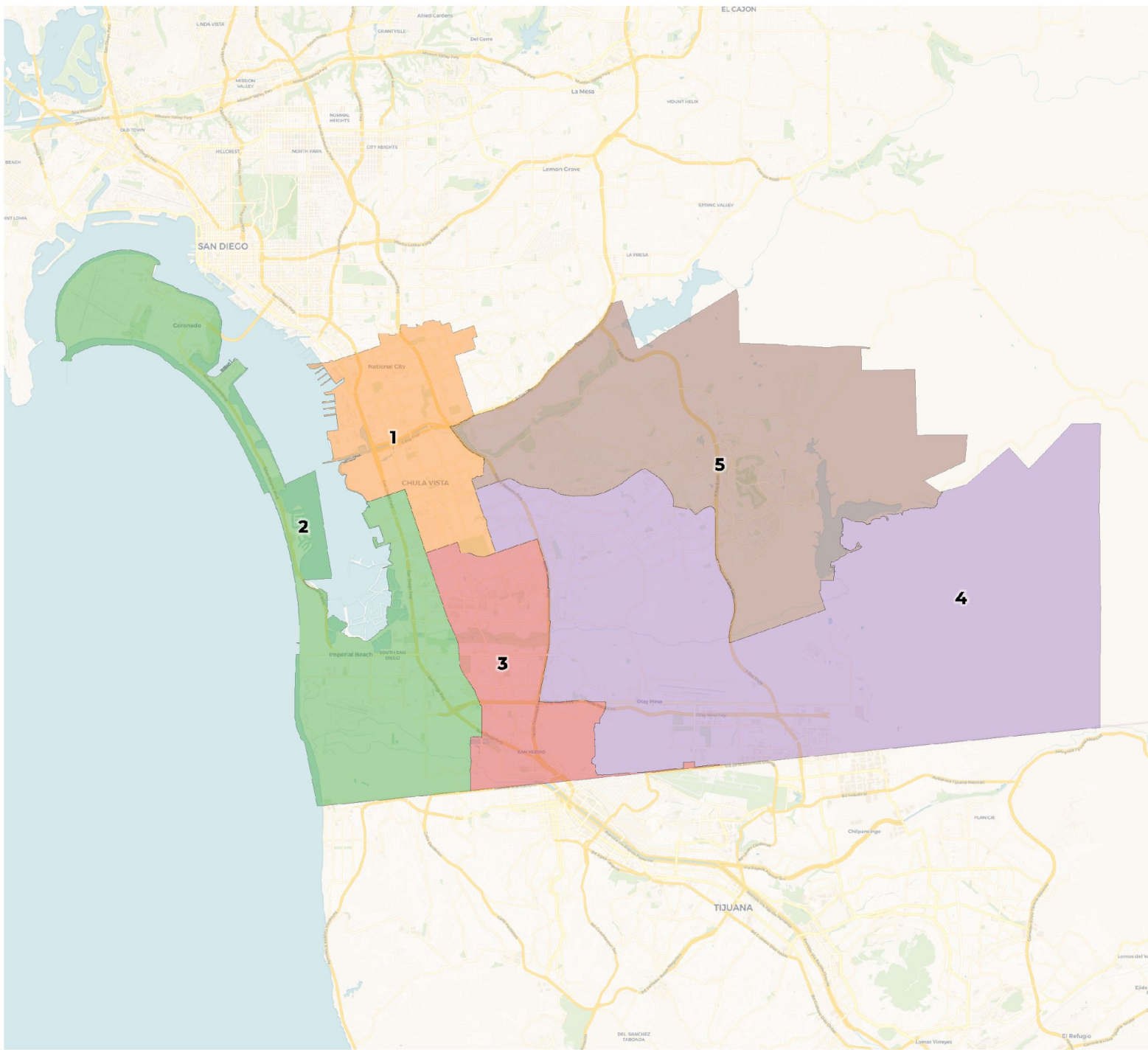
2020 Census



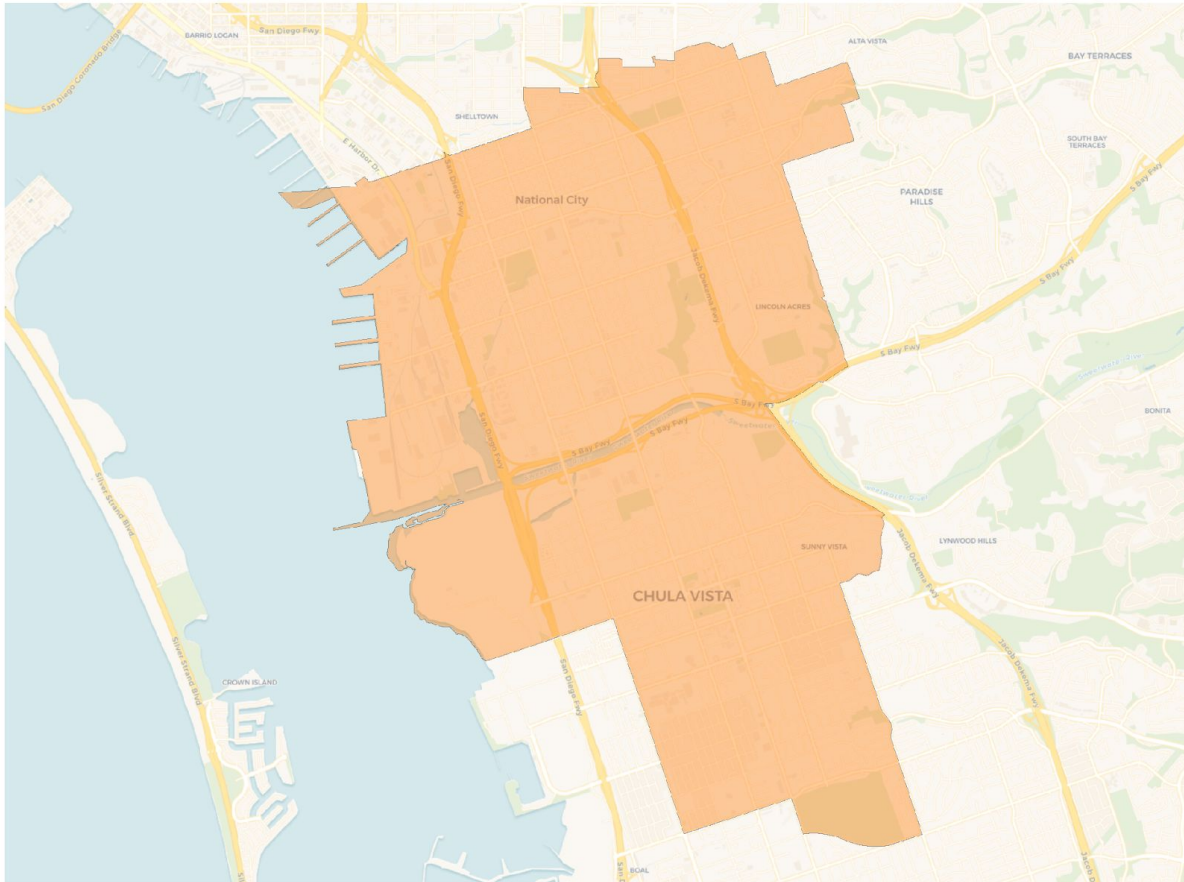
Citizen Voting Age Population



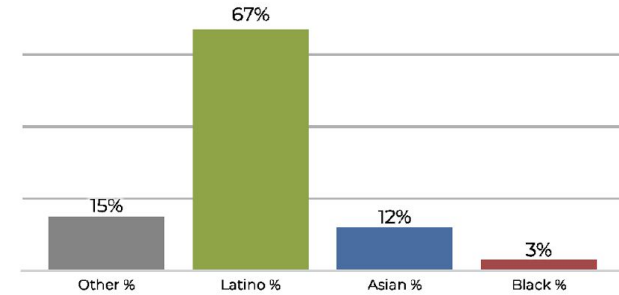
Population	Deviation	Deviation %	Other	Other %	Latino	Latino %	Asian	Asian %	Black	Black %
106,255	3,981	3.9%	29,147	27.4%	52,680	49.6%	19,224	18.1%	5,204	4.9%
Total CVAP	Other CVAP	Other CVAP %	Latino CVAP	Latino CVAP %	Asian CVAP	Asian CVAP %	Black CVAP	Black CVAP %		
71,230	21,454	30.1%	31,278	43.9%	14,399	20.2%	4,099	5.8%		



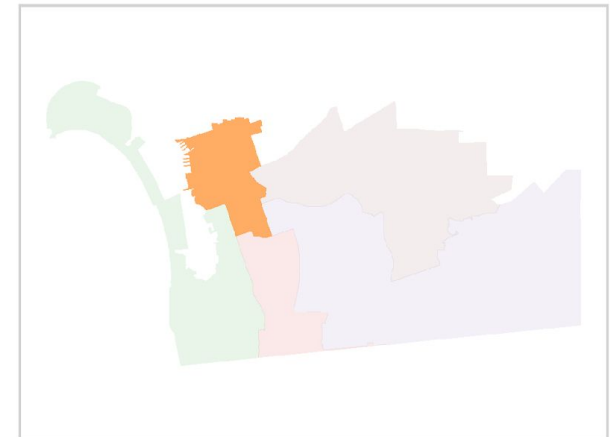
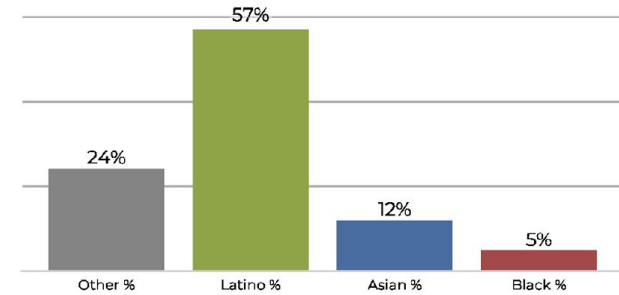
District 1



2020 Census

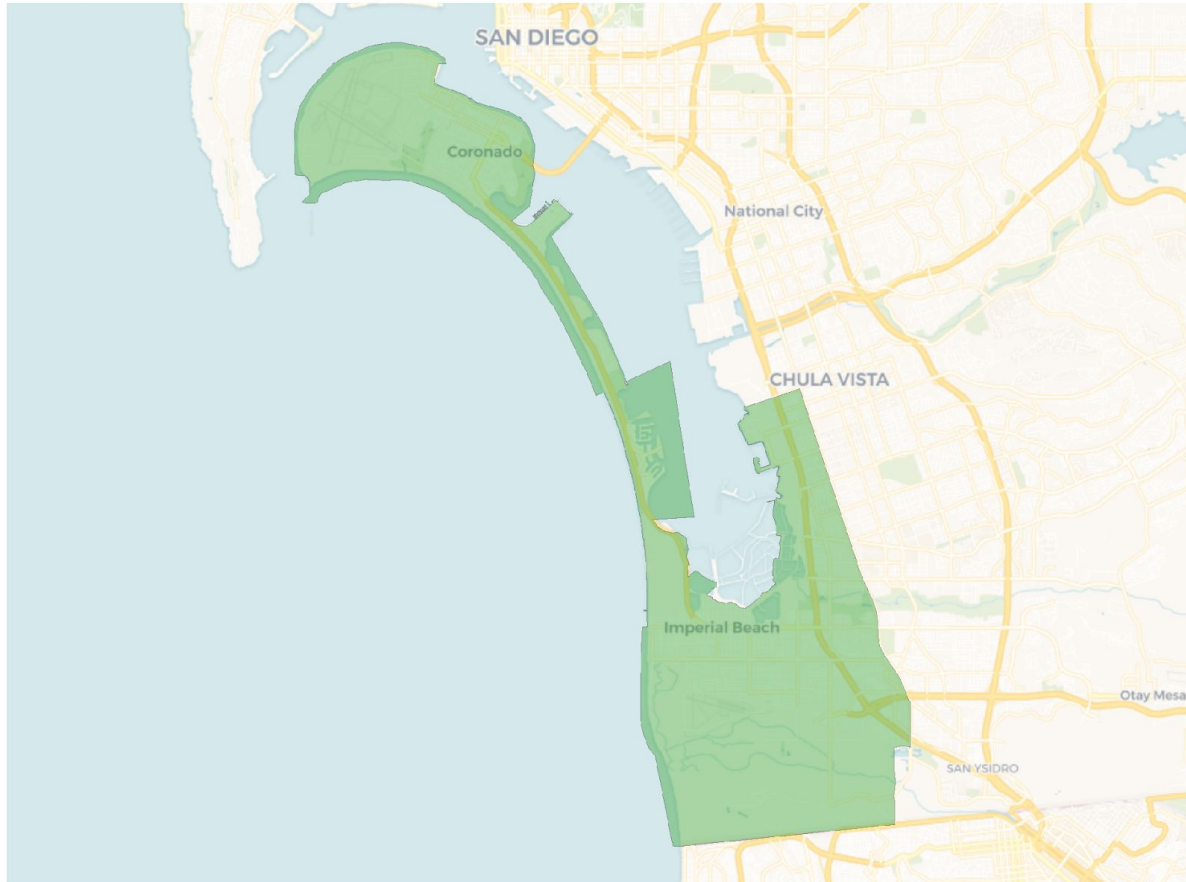


Citizen Voting Age Population

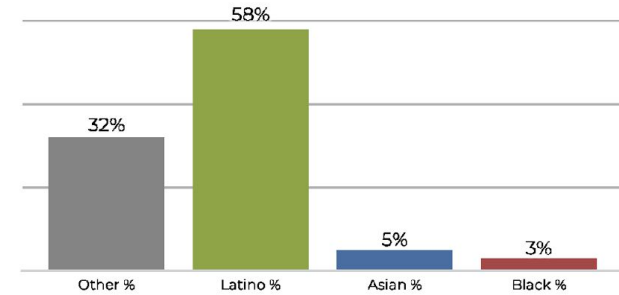


Population	Deviation	Deviation %	Other	Other %	Latino	Latino %	Asian	Asian %	Black	Black %
98,719	-3,555	-3.5%	15,472	15.7%	67,002	67.9%	12,747	12.9%	3,498	3.5%
Total CVAP	Other CVAP	Other CVAP %	Latino CVAP	Latino CVAP %	Asian CVAP	Asian CVAP %	Black CVAP	Black CVAP %		
62,211	15,159	24.4%	35,733	57.4%	7,734	12.4%	3,585	5.8%		

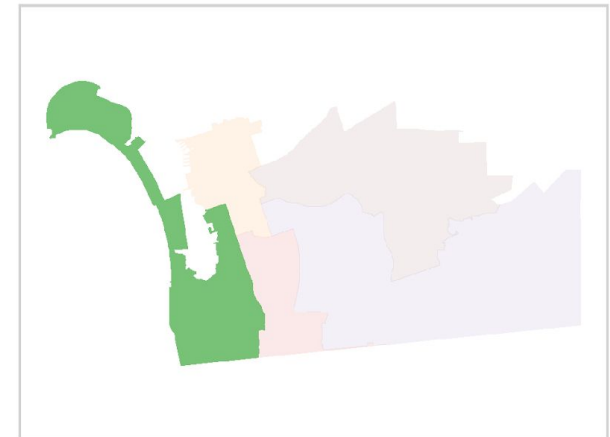
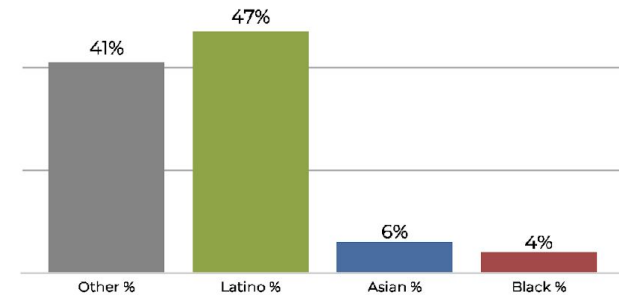
District 2



2020 Census

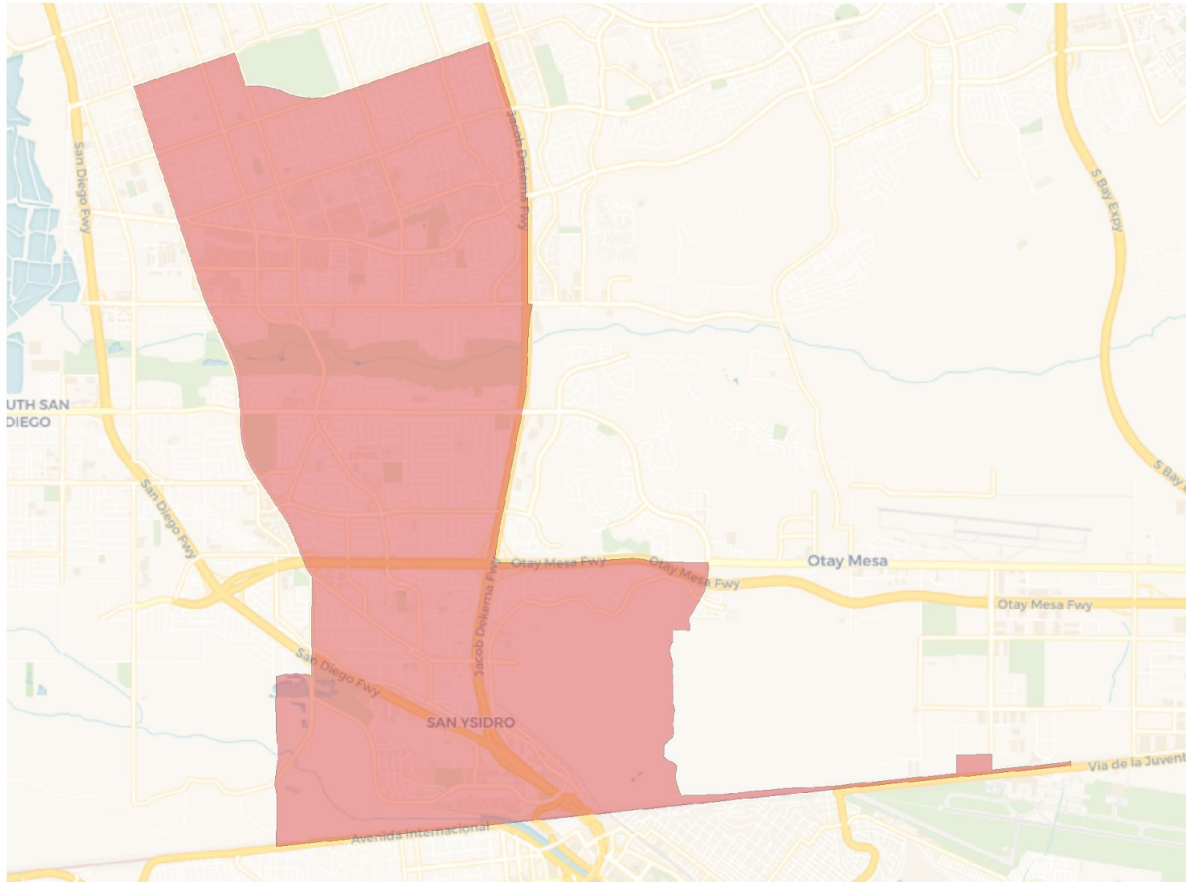


Citizen Voting Age Population

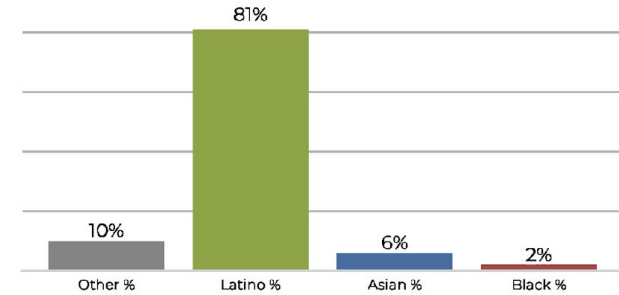


Population	Deviation	Deviation %	Other	Other %	Latino	Latino %	Asian	Asian %	Black	Black %
105,888	3,614	3.5%	34,444	32.5%	61,758	58.3%	5,970	5.6%	3,716	3.5%
Total CVAP	Other CVAP	Other CVAP %	Latino CVAP	Latino CVAP %	Asian CVAP	Asian CVAP %	Black CVAP	Black CVAP %		
70,612	29,361	41.6%	33,373	47.3%	4,774	6.8%	3,104	4.4%		

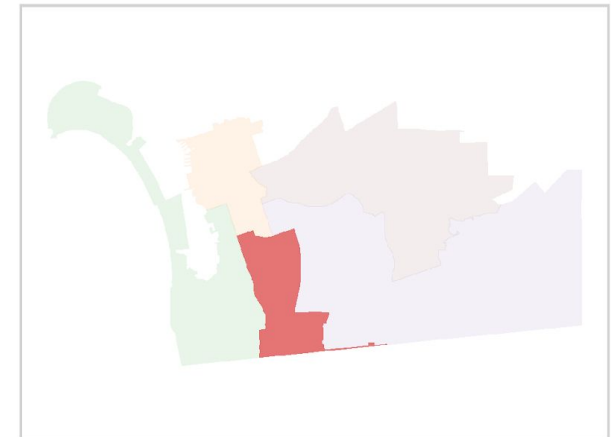
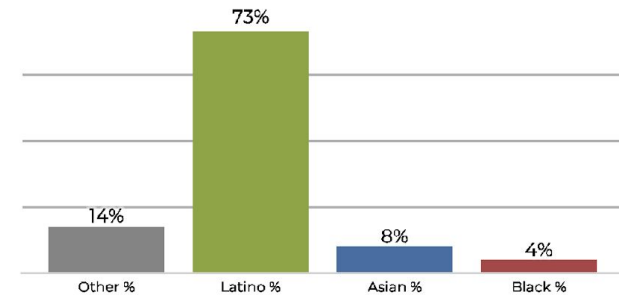
District 3



2020 Census

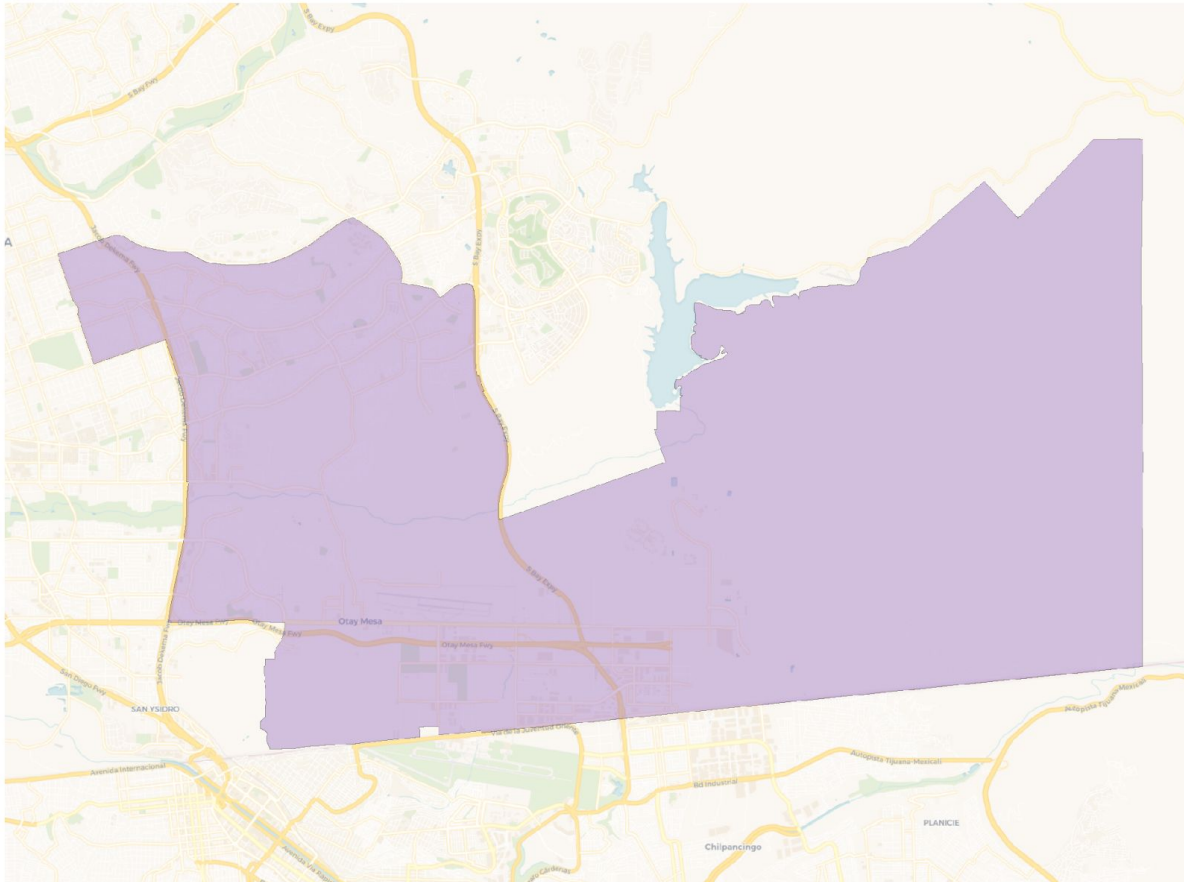


Citizen Voting Age Population



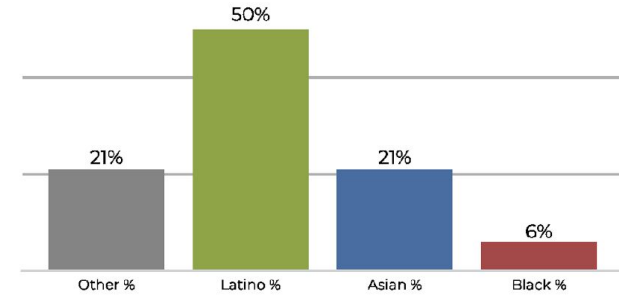
Population	Deviation	Deviation %	Other	Other %	Latino	Latino %	Asian	Asian %	Black	Black %
104,017	1,743	1.7%	10,555	10.1%	84,795	81.5%	6,191	6.0%	2,476	2.4%
Total CVAP	Other CVAP	Other CVAP %	Latino CVAP	Latino CVAP %	Asian CVAP	Asian CVAP %	Black CVAP	Black CVAP %		
60,422	8,742	14.5%	44,447	73.6%	4,839	8.0%	2,394	4.0%		

District 4

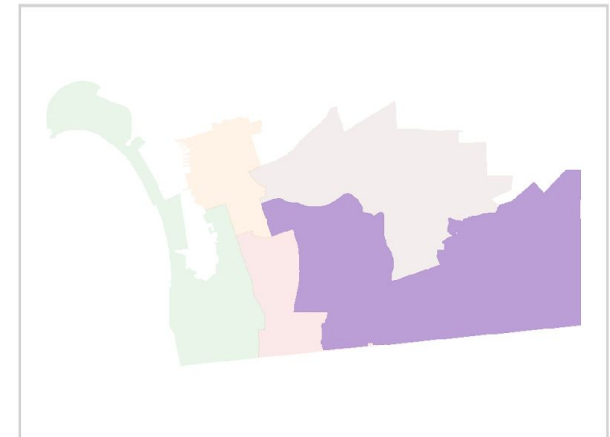
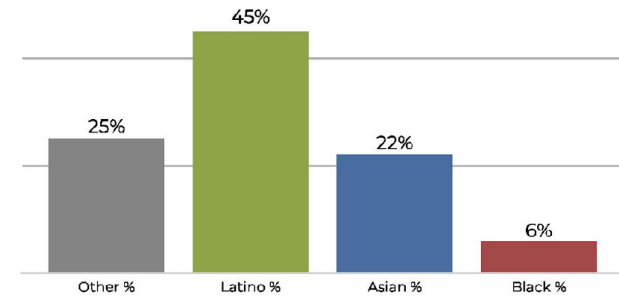


Population	Deviation	Deviation %	Other	Other %	Latino	Latino %	Asian	Asian %	Black	Black %
101,523	-751	-0.7%	21,615	21.3%	51,311	50.5%	21,681	21.4%	6,916	6.8%
Total CVAP	Other CVAP	Other CVAP %	Latino CVAP	Latino CVAP %	Asian CVAP	Asian CVAP %	Black CVAP	Black CVAP %		
62,305	15,977	25.6%	28,554	45.8%	13,964	22.4%	3,810	6.1%		

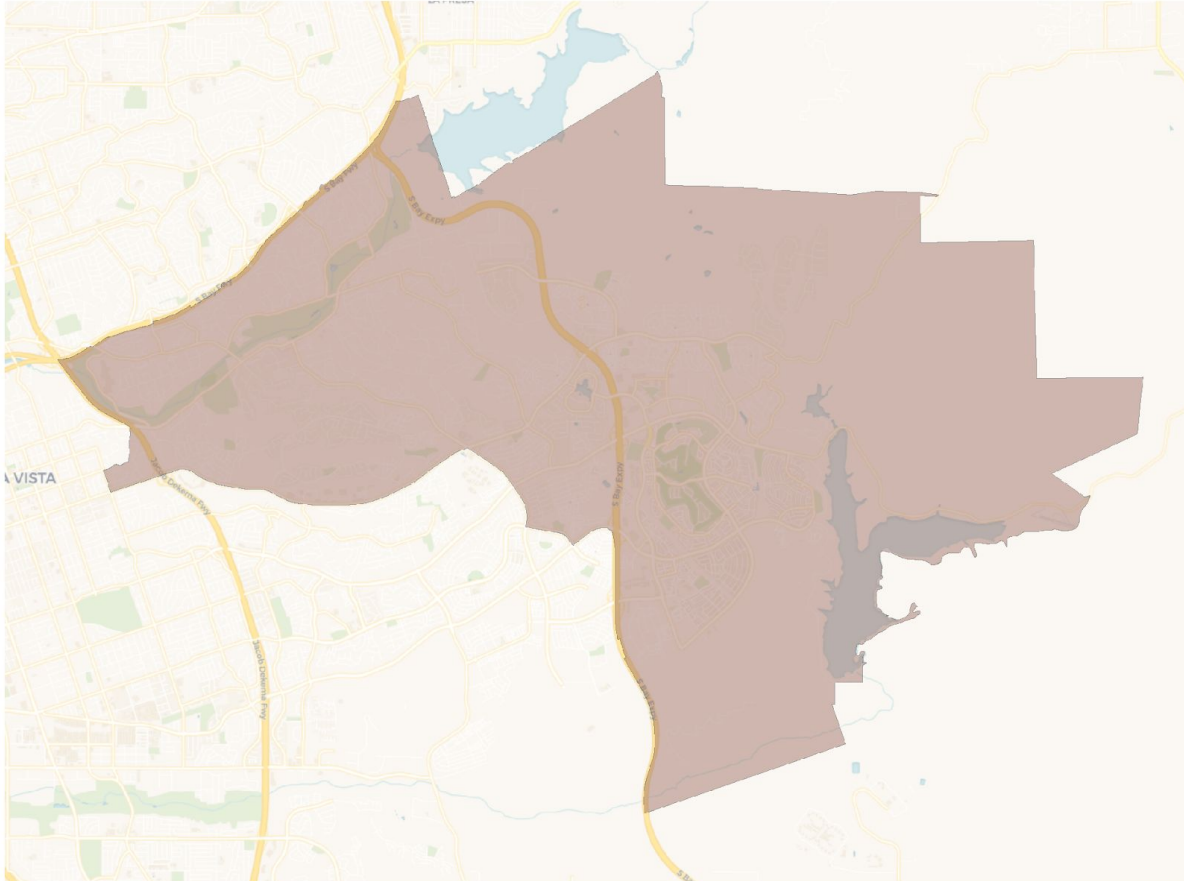
2020 Census



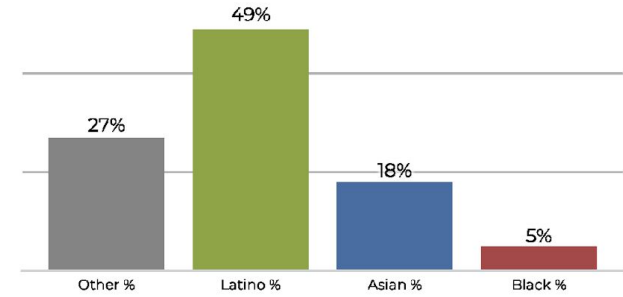
Citizen Voting Age Population



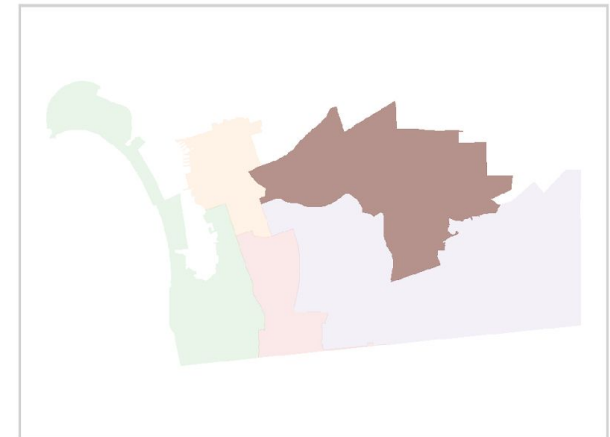
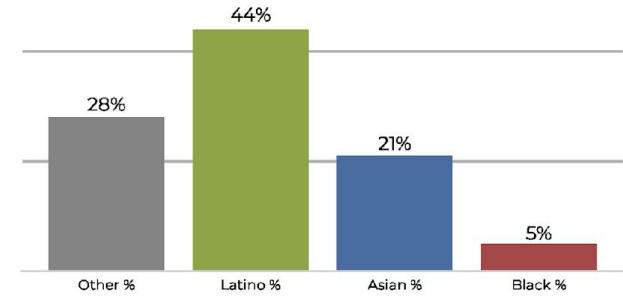
District 5



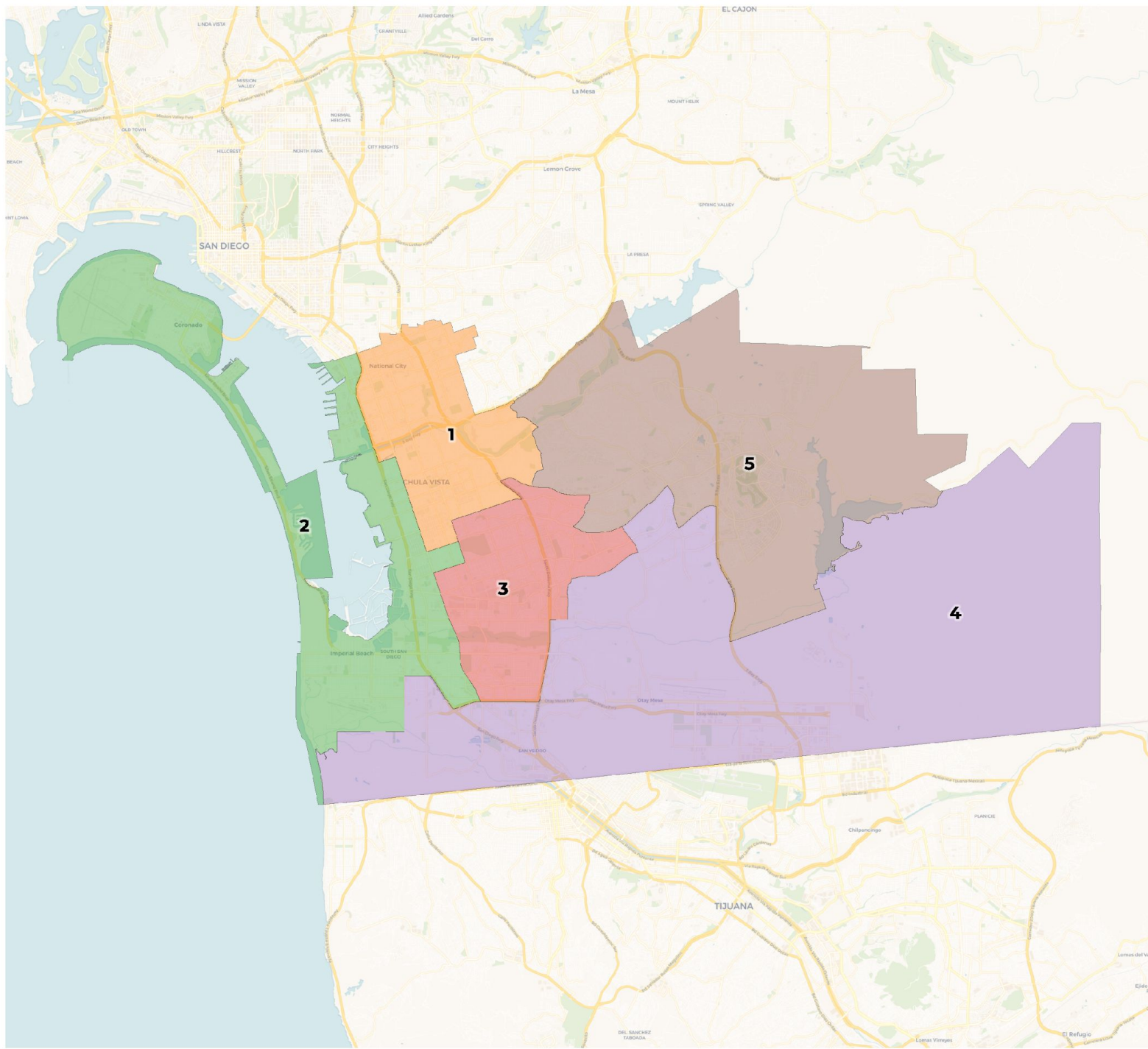
2020 Census



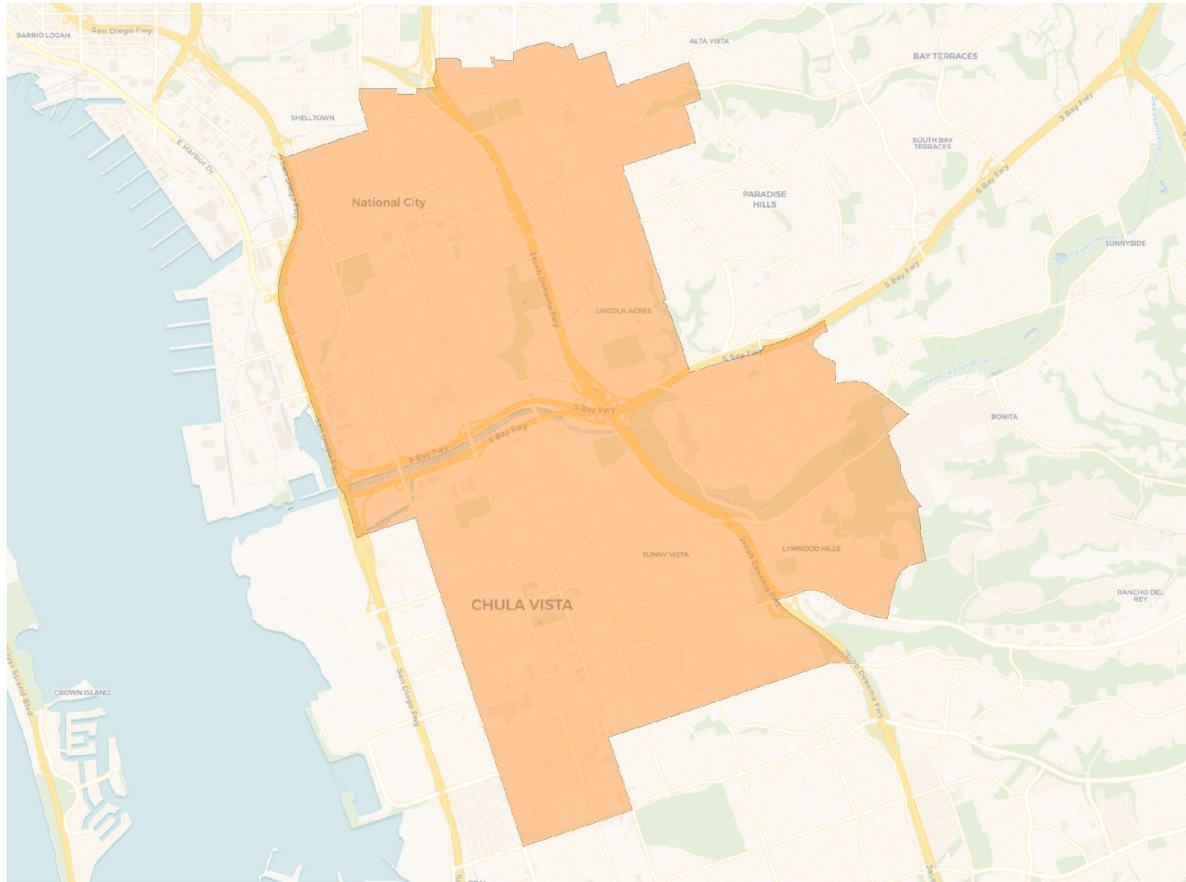
Citizen Voting Age Population



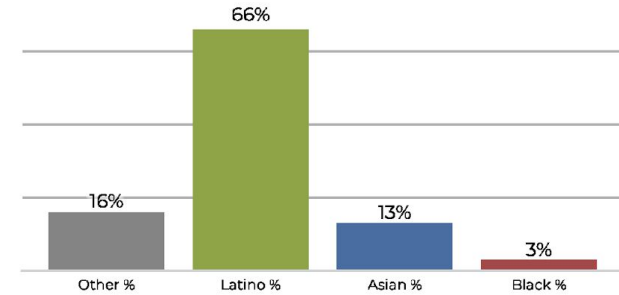
Population	Deviation	Deviation %	Other	Other %	Latino	Latino %	Asian	Asian %	Black	Black %
101,225	-1,049	-1.0%	27,494	27.2%	49,615	49.0%	19,088	18.9%	5,028	5.0%
Total CVAP	Other CVAP	Other CVAP %	Latino CVAP	Latino CVAP %	Asian CVAP	Asian CVAP %	Black CVAP	Black CVAP %		
67,225	19,238	28.6%	29,795	44.3%	14,279	21.2%	3,913	5.8%		



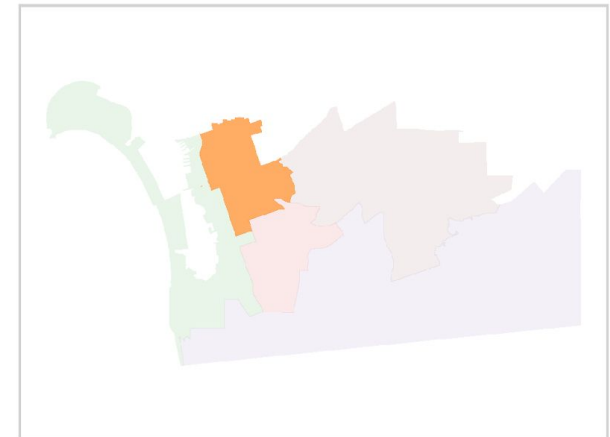
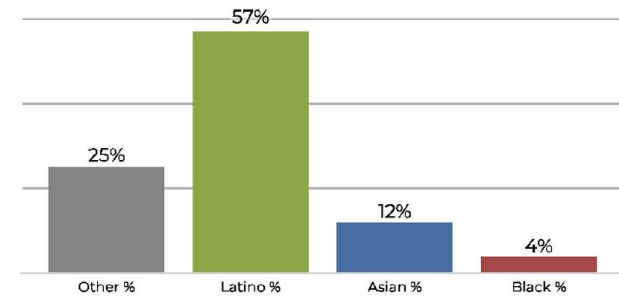
District 1



2020 Census

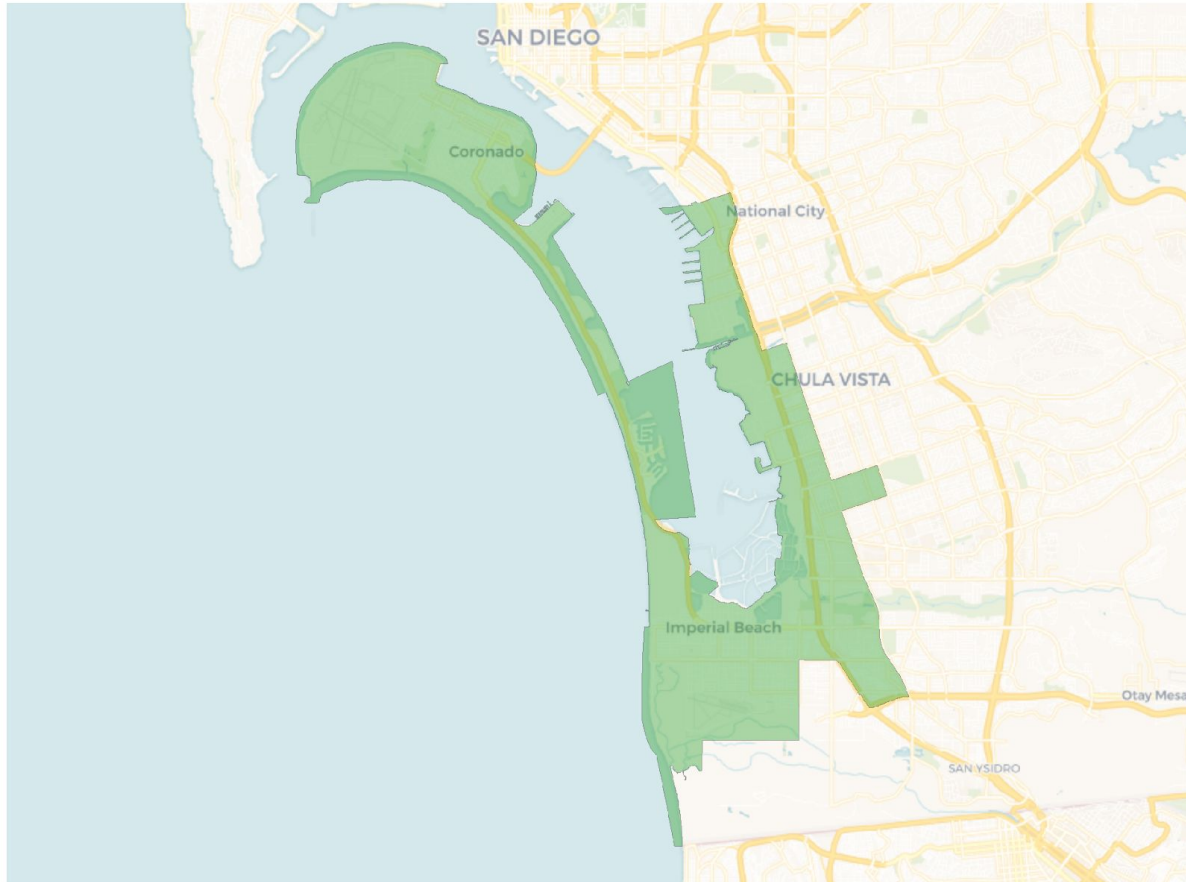


Citizen Voting Age Population

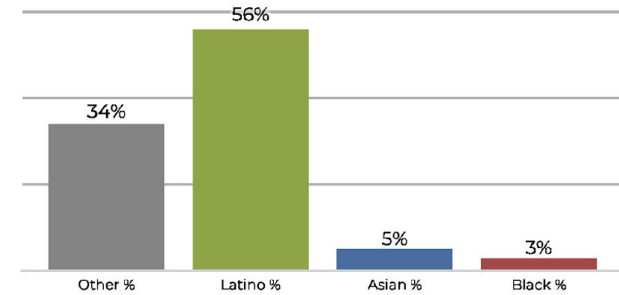


Population	Deviation	Deviation %	Other	Other %	Latino	Latino %	Asian	Asian %	Black	Black %
100,539	-1,735	-1.7%	16,583	16.5%	66,892	66.5%	13,559	13.5%	3,505	3.5%
Total CVAP	Other CVAP	Other CVAP %	Latino CVAP	Latino CVAP %	Asian CVAP	Asian CVAP %	Black CVAP	Black CVAP %		
62,674	15,718	25.1%	36,012	57.5%	8,015	12.8%	2,929	4.7%		

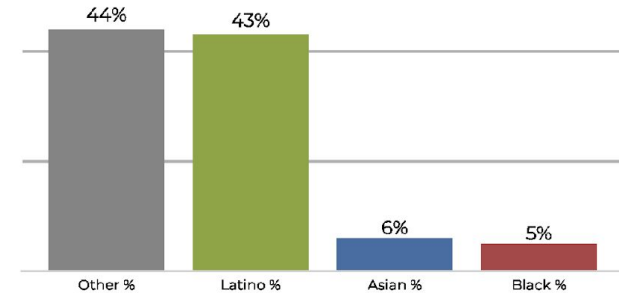
District 2



2020 Census

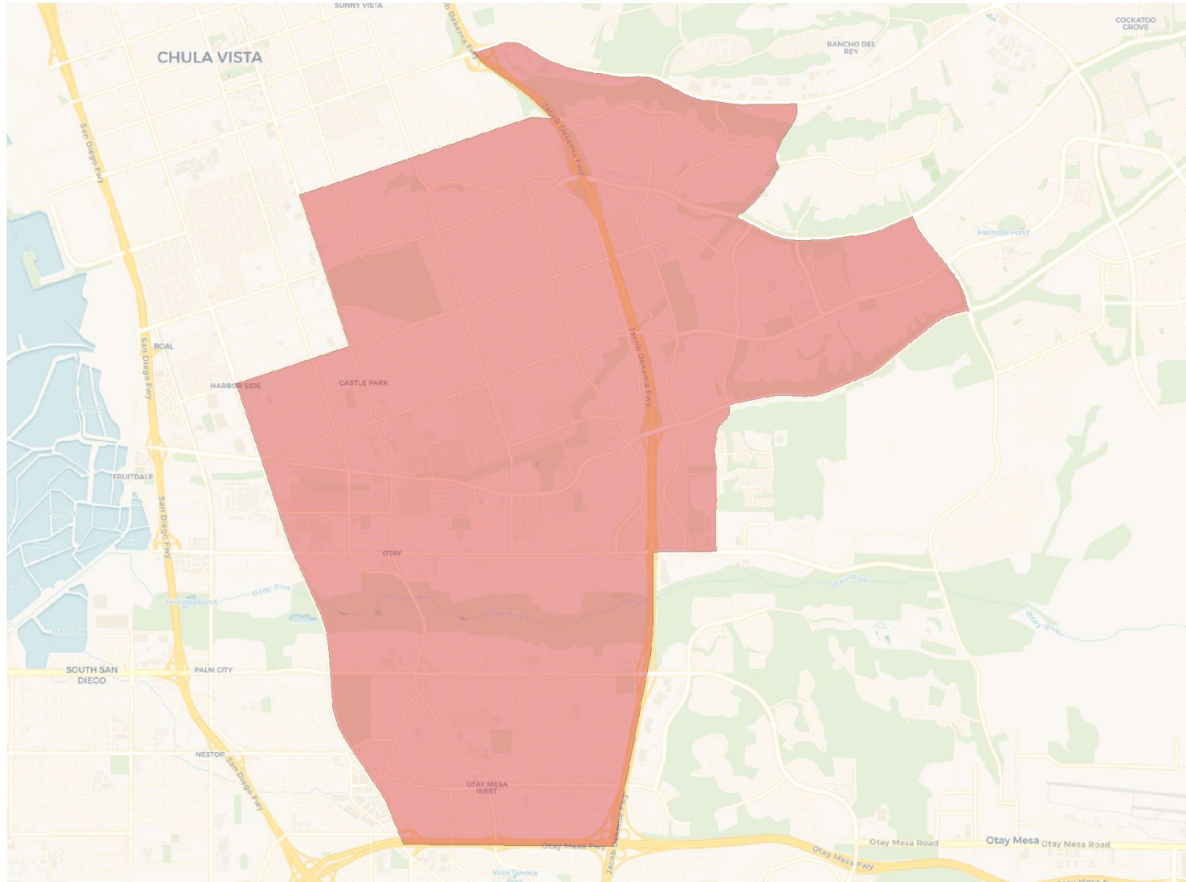


Citizen Voting Age Population

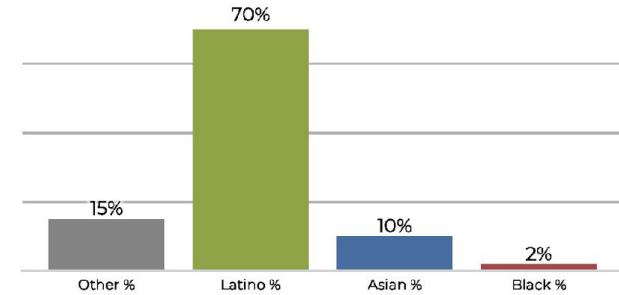


Population	Deviation	Deviation %	Other	Other %	Latino	Latino %	Asian	Asian %	Black	Black %
98,765	-3,509	-3.4%	34,364	34.8%	55,539	56.2%	5,079	5.1%	3,783	3.8%
Total CVAP	Other CVAP	Other CVAP %	Latino CVAP	Latino CVAP %	Asian CVAP	Asian CVAP %	Black CVAP	Black CVAP %		
65,986	29,175	44.2%	28,787	43.6%	4,312	6.5%	3,712	5.6%		

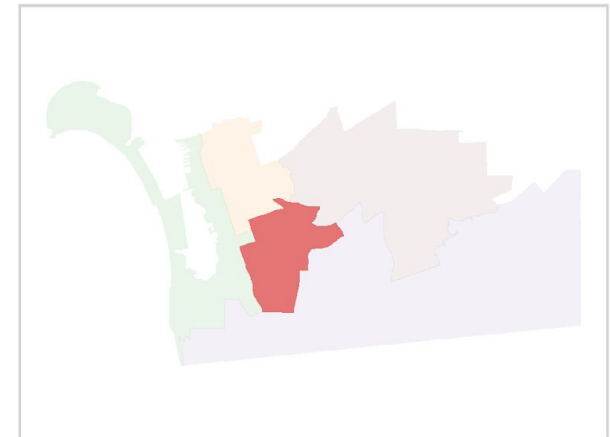
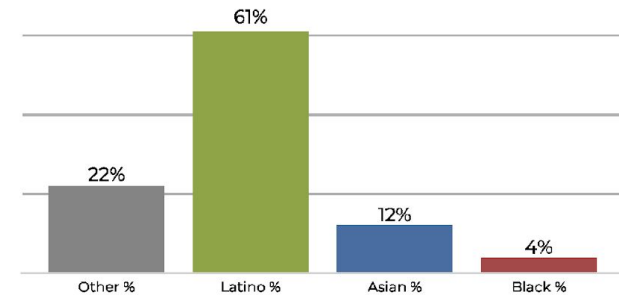
District 3



2020 Census

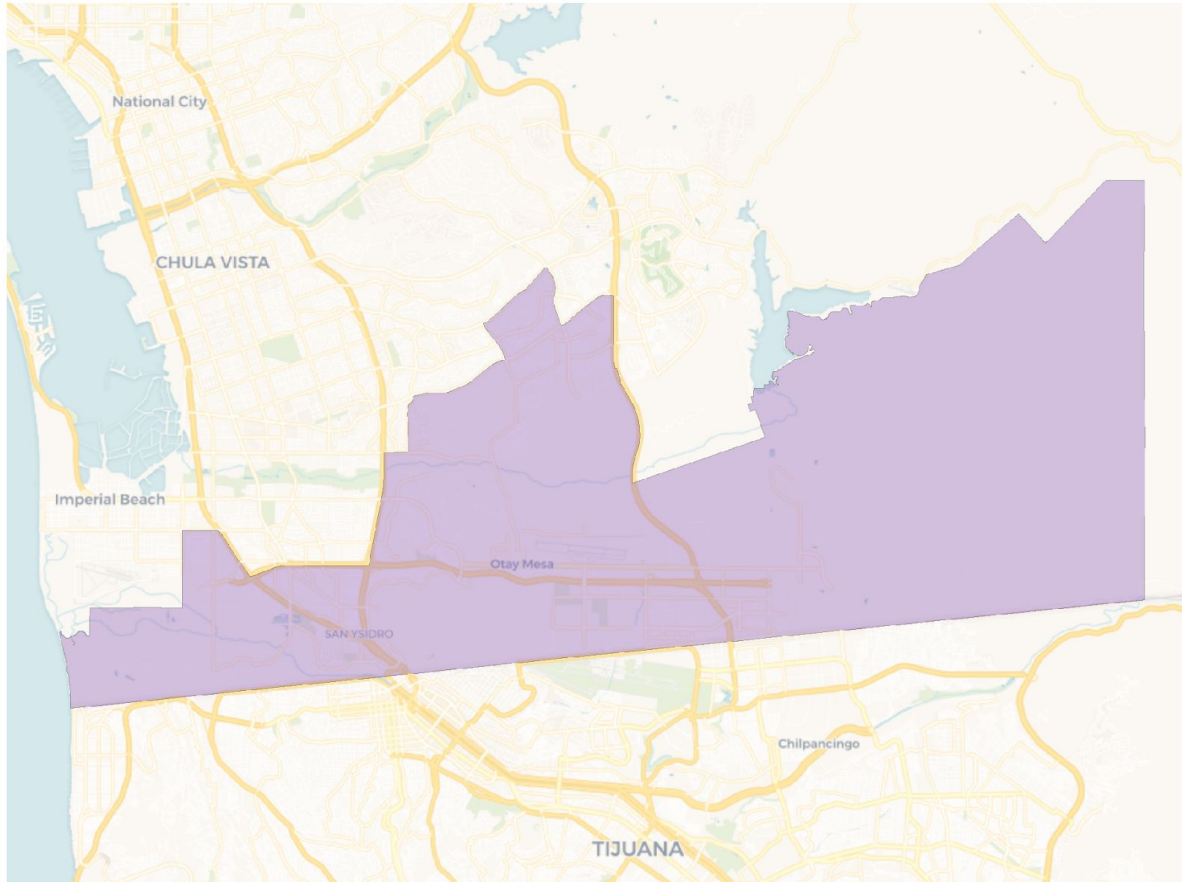


Citizen Voting Age Population



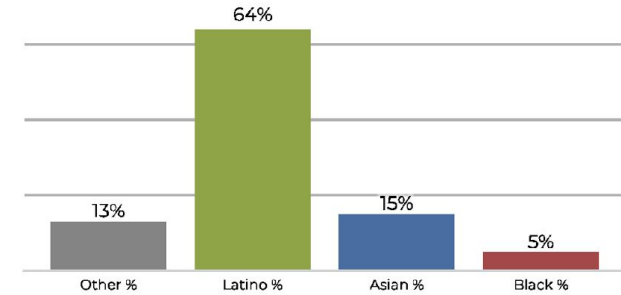
Population	Deviation	Deviation %	Other	Other %	Latino	Latino %	Asian	Asian %	Black	Black %
105,963	3,689	3.6%	16,817	15.9%	75,038	70.8%	11,045	10.4%	3,063	2.9%
Total CVAP	Other CVAP	Other CVAP %	Latino CVAP	Latino CVAP %	Asian CVAP	Asian CVAP %	Black CVAP	Black CVAP %		
66,617	14,709	22.1%	41,244	61.9%	7,998	12.0%	2,666	4.0%		

District 4

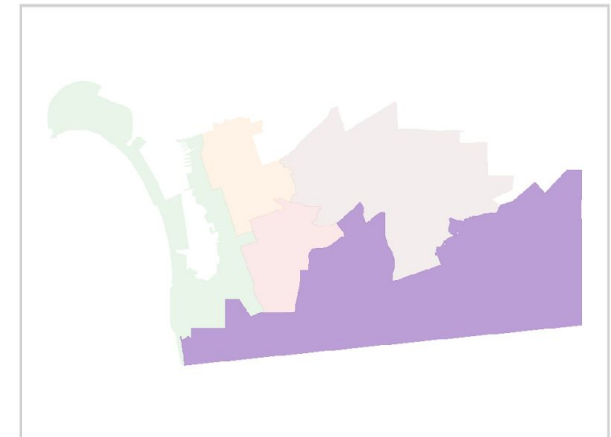
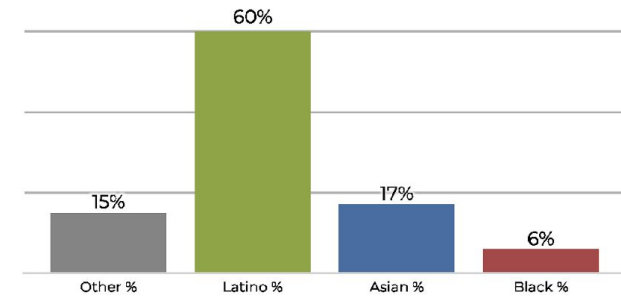


Population	Deviation	Deviation %	Other	Other %	Latino	Latino %	Asian	Asian %	Black	Black %
101,306	-968	-0.9%	13,589	13.4%	65,718	64.9%	16,010	15.8%	5,989	5.9%
Total CVAP	Other CVAP	Other CVAP %	Latino CVAP	Latino CVAP %	Asian CVAP	Asian CVAP %	Black CVAP	Black CVAP %		
57,889	9,212	15.9%	34,998	60.5%	10,209	17.6%	3,470	6.0%		

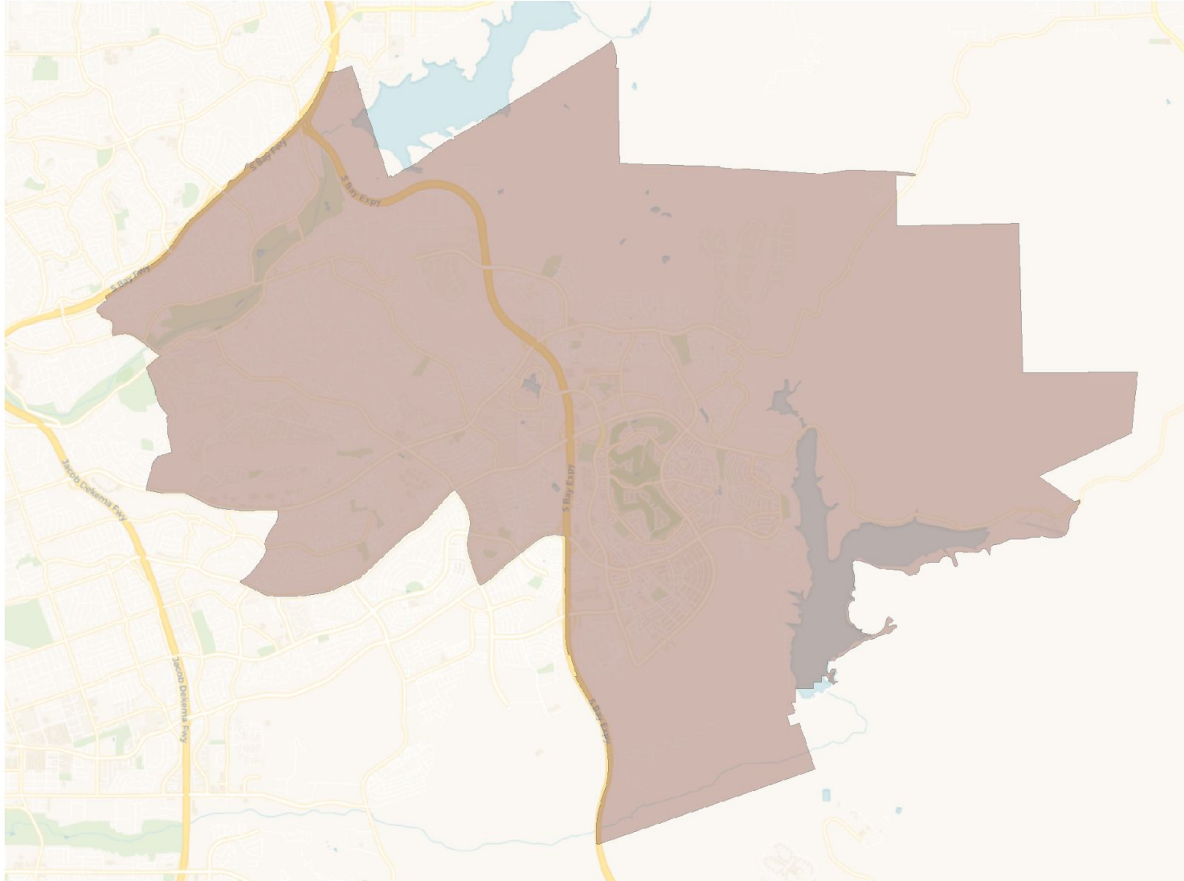
2020 Census



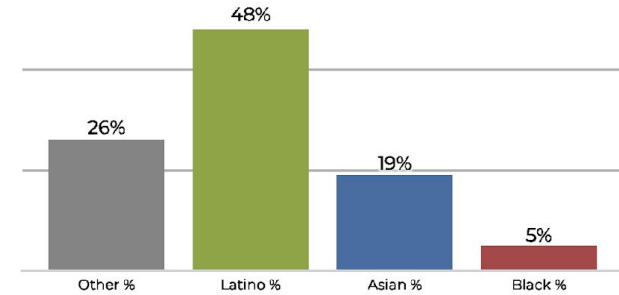
Citizen Voting Age Population



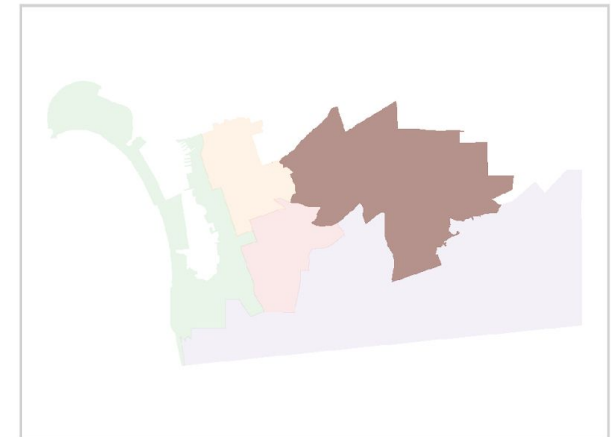
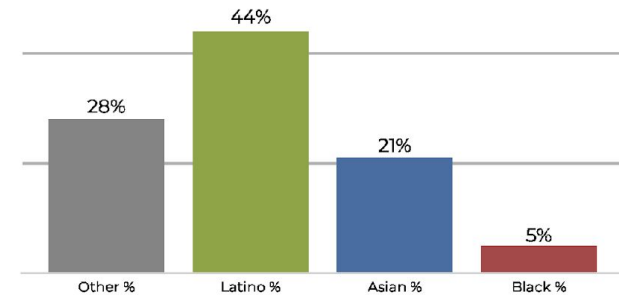
District 5



2020 Census



Citizen Voting Age Population



Population	Deviation	Deviation %	Other	Other %	Latino	Latino %	Asian	Asian %	Black	Black %
104,799	2,525	2.5%	28,227	26.9%	51,294	48.9%	19,984	19.1%	5,294	5.1%
Total CVAP	Other CVAP	Other CVAP %	Latino CVAP	Latino CVAP %	Asian CVAP	Asian CVAP %	Black CVAP	Black CVAP %		
69,609	19,663	28.2%	30,861	44.3%	15,056	21.6%	4,029	5.8%		