



SCHEDULE OF CLASSES

Southwestern College

Summer 2021

Classes Begin **June 7**

www.swccd.edu

900 Otay Lakes Road, Chula Vista, CA 91910-7299

**NEW! Virtual Welcome
Center for Students:**<https://www.swccd.edu/student-support/virtual-welcome-center.aspx>

Frequently Called Phone Numbers

For questions or department not listed below, please visit www.swccd.edu

Area Code 619	Ext.	Area Code 619	Ext.
Academic Success Center	482-6348	Instructional Support Services	482-6442
Admissions	421-6700.....	Library	421-6700.....
or 5216	5215	Medical Assisting Program.....	216-6665.....
Art Gallery.....	216-6605	Medical Laboratory Technician Program.....	216-6665.....
Assessment (Placements)	482-6385	Nursing Programs and Courses	482-6352
Associated Student Organization (ASO)	482-6568	Online Learning Center	482-6595
Athletics	482-6370	Outreach.....	482-6518
Basic Police Academy.....	482-6462	Parking Services.....	216-6611
Bookstore	bookstore@swccd.edu.	Perkins Grant/CTE Office	421-6700.....
CalWORKs Program.....	482-6510	Personal Wellness Services.....	421-6700.....
Career Center	421-6700.....	Prerequisite Review.....	482-6385
.....	5247	Registration Information	421-6700 ...
Cashier's Office/Student Accounts	482-6307	5215 or 5216
Child Development Center	216-6695	Small Business Development Center.....	482-6391
College Police (EMERGENCIES ONLY).....	216-6691	Student Accounts	482-6307
College Police (NON-EMERGENCIES).....	482-6380	Student Activities	482-6568
Communications, Community and		Student Employment Services	482-6356
Government Relations.....	482-6304	Student Newspaper (Southwestern Sun).....	mbranscomb@swccd.edu
Continuing Education	482-6376	Superintendent/President	482-6301
Counseling Center.....	482-6317	Tennis Courts and Tennis Center	421-6622
Crown Cove Aquatic Center.....	575-6176	Transfer Center	482-6472
Customized Training	482-6376	Veterans Center.....	482-6548
Dental Hygiene	216-6665.....	Workability III Program	216-6714 / VP 207-4480
.....	4862	Writing Center	421-6700.....
Disability Support Services	482-6512/VP 207-4480		5830
DSS Test Proctor.....	421-6700.....		
.....	5271		
Economic Development	482-6479		
Emergency Medical Technology/ Paramedic (EMT/EMTP).....	216-6760		
Extended Opportunity Programs and Services (EOPS)	482-6456		
Evaluations	482-6326		
Facilities Leasing.....	482-6319		
Facilities, Operations and Planning.....	482-6573		
Financial Aid	482-6357		
Financial Services and Budgeting.....	216-6641		
First Year Experience (FYE).....	421-6700.....		
.....	5625		
Health Services	482-6354		
High School Student Information (Outreach)	482-6518		
Higher Education Center at National City	216-6665.....		
.....	4851		
Higher Education Center at Otay Mesa.....	216-6750		
Higher Education Center at San Ysidro	216-6790		

Schools, Units and Centers

Arts, Communication and Social Sciences...	482-6372
Business and Technology.....	482-6460
Continuing Education and Workforce Development.....	482-6373
Counseling and Student Support Programs .	482-6471
Language, Literature, and Humanities	482-6461
Mathematics, Science, and Engineering.....	482-6459
Wellness, Exercise Science and Athletics.....	216-6626
Higher Education Center at National City ...	216-6665.....
.....	4851
Higher Education Center at Otay Mesa.....	216-6750
Higher Education Center at San Ysidro	216-6790

*** Please refer to the College website for more information.**

The Southwestern College Schedule (USPS #024423) Published six times a year in November, January, March, April, May, and July by the offices of Publications and Continuing Education at Southwestern College, 900 Otay Lakes Road, Chula Vista, CA 91910-7299. Periodicals Postage Paid at Chula Vista, California. Volume 14, Issue Number 3, April 2020, Southwestern College Schedule. POSTMASTER: Send address changes to Southwestern College Schedule, 900 Otay Lakes Road, Chula Vista, CA 91910-7299.



DISCLAIMER While every reasonable effort is made to ensure that statements in the schedule are accurate, the information contained herein is subject to change or elimination without notice by the administration of the Southwestern Community College District. Students should consult the appropriate campus, campus/district website or department for current information, as well as for any special rules or requirements imposed. Class listing information is as of 04/2021. **Please visit:** www.swccd.edu/WebAdvisor for most current scheduling information.



Summer 2021 Office Hours

Academic Success Center

619-482-6348 or go to <https://www.swccd.edu/student-support/tutoring/>

Admissions and Records

619-421-6700 ext. 5215 or 5216 or admissions@swccd.edu
Cranium Café summer hours:
8:00 a.m. to 6:30 p.m.,
Monday through Thursday
Visit our Cranium Café lobbies:
<https://swccd.craniumcafe.com/group/admissions-and-records/lobby>

Assessment/Prerequisites

619-482-6385
Available on Cranium Cafe or
SWCAssessment@swccd.edu

Bookstore

bookstore@swccd.edu.
(hours vary, check the Bookstore website at
www.swcbookstore.com)

CalWORKs Program

619-482-6510 and Available on Cranium Cafe

Career Center

619-421-6700, ext. 5247 or
careercenter@swccd.edu

Cashier's Office/Student Accounts

619-482-6307 and 619-482-6314.

Child Development Center

619-216-6695, Building 99

College Police Department

619-216-6691 (Emergencies Only)
619-482-6380 (Non-emergencies)
Building 22 in Parking Lot C

Chula Vista Campus

Police:

Mon.–Sat.

5 a.m. – Midnight; Sun 7a.m. – 5p.m.

Police Lobby:

Closed until further notice.

Parking or citation information: please visit www.swccd.edu/parking or email swcparking@swccd.edu

Continuing Education

619-482-6376
continuinged@swccd.edu
Available on Cranium Cafe

Cooperative Work Experience Education (CWEE)

Student Employment Services
619-482-6356 or jswanson@swccd.edu

Counseling Center

619-482-6317
counseling@swccd.edu
Available on Cranium Cafe

Disability Support Services (DSS)

619-482-6512 or dss@swccd.edu
VP 619-207-4480
Available on Cranium Cafe

District Lost and Found

619-216-6611
Contact Campus Police

Extended Opportunity Programs and Services (EOPS)

619-482-6456

Evaluations

619-482-6326 or evaluations@swccd.edu

Financial Aid

619-482-6357

First Year Experience (FYE)

619-421-6700, ext. 5625 or
SWCFYE@swccd.edu

Health Services

619-482-6354 or enurse@swccd.edu

Honors Program

619-482-6472

Library

619-482-6397 or
www.swccd.edu/libraryhours

Mathematics, Engineering, Science Achievement Program (MESA)

619-482-6381 or mmjahed@swccd.edu

Math Center

619-421-6700, ext. 5270 or
tluque@swccd.edu

Online Learning Center

619-482-6595 or onlinelearning@swccd.edu
or **Live Chat** – 24/7 coverage

Outreach Services

619-482-6518 or outreach@swccd.edu

Personal Wellness Services

619-421-6700, ext. 5279 or
SWCPersonalWellness@swccd.edu

Restorative Justice Program

619-216-6657 or prmilikovich@swccd.edu

Service Learning

619-482-6537 or jmarasigan@swccd.edu

Student Activities

619-482-6568 or SWCStudentActivities@swccd.edu

Student Employment Services

619-482-6356 or ses@swccd.edu

Transfer Center

619-482-6472 or SWCTransferCenter@swccd.edu

Veterans Resource Center

619-482-6548 or www.swccd.edu/vrc

Veterans Services

619-482-6324 or www.swccd.edu/veterans

Workability III Program

619-216-6714 or jnominni@swccd.edu

School, Unit and Center Hours

Crown Cove Aquatic Center

Christine Perri, M.A., Dean
Fernando Poveda, M.Ed., Director
619-575-6176 or ccac@swccd.edu

School of Arts, Communication and Social Sciences

Cynthia McGregor, Ph.D., Dean
619-482-6372 or
ezwierski@swccd.edu
acardenas@swccd.edu
rkatzenstein@swccd.edu

School of Business and Technology

Mink Stavenga, D.B.A., Dean
619-482-6460 or tgallagos@swccd.edu

School of Counseling and Student Support Programs

Steven Baissa, M.A., Dean
619-482-6471

School of Language, Literature, and Humanities

Joel Levine, Ed.D. Dean
619-482-6461 or ksanchez@swccd.edu

School of Mathematics, Science and Engineering

Michael Odu, Ph.D., Dean
619-482-6459 or mse@swccd.edu

School of Wellness, Exercises Science and Athletics

James Spillers, M.S., Dean
619-421-6700 x5353

Higher Education Center at National City (HEC, NC)

Christine Perri, M.A., Dean
619-216-6665 or hecnc@swccd.edu

Higher Education Center at Otay Mesa (HEC, OM)

Silvia Cornejo, M.A., Dean
619-216-6750

Higher Education Center at San Ysidro (HEC, SY)

Silvia Cornejo, M.A., Dean
Patricia Bartow, M.A., Director
619-216-6790

Office of Student Services

Rachel Fischer, M.Ed., Dean
619-482-6369 or
SWCOOfficeOfStudentServices@swccd.edu

Instructional Support Services

Mia McClellan, M.Ed., Dean
619-482-6442 or mfenlon@swccd.edu

School of Continuing Education and Workforce Development

Jennifer Lewis, M.S. Dean
Myesha Jackson, MBA, Director
619-482-6376 or continuinged@swccd.edu



Did you know Southwestern College has a **FREE Drive-Up Wifi Zone**?

The FREE Drive-Up Wifi Zone is available for students who do not have access to the internet and is located right by the College Police Building (Parking Lot D). A Southwestern College ID on the student's car dashboard is needed for verification OR a printed copy of the student's registration statement or class schedule.

For more information visit: www.swccd.edu/administration/institutional-technology/network-and-infrastructure

Summer 2021

Important Dates and Deadlines

APRIL 12

- Email registration information to students

APRIL 26

- Registration begins by appointment
- Waitlist available (as classes fill)

MAY 19

- Drop for non-payment

JUNE 6

- Residency determination date

JUNE 7

- Summer 2021 Semester Begins
- 9-week session begins

JUNE 10

- Last day to file a petition for Pass/No Pass for 9-week session; deadline is Thursday of the 1st week of class for all summer classes
- Textbooks and required class materials must be returned by the third day of Summer class start date (see SWCBookstore.com)

JUNE 14

- 8-week summer session begins

JUNE 17

- Last day to file a petition for Credit by Examination

ADD AND DROP DEADLINES FOR SUMMER CLASSES

Check WebAdvisor to view the deadline dates by clicking on the class title of a specific class section. You may add classes with an add code or withdraw from classes via WebAdvisor by the posted deadline

JUNE 24

- Financial Aid Freeze Date

JULY 1

- Deadline to apply for Summer 2020 Graduation

JULY 5

- **CAMPUS CLOSED—INDEPENDENCE DAY**

AUGUST 5-12

- Online Grading is open

AUGUST 5

- Last day of classes— End of Summer 2020

AUGUST 12

- Final grades are due for 8 and 9 week classes (Note: in general, grades are due one week after the end date of any section.)



REMINDER TO FACULTY!

GRADE ROSTERS MUST BE SUBMITTED ON WEBADVISOR AND ARE DUE BY: **11:59 P.M. ON AUGUST 12, 2021.**

Short Session Deadlines:

All summer sessions follow short-session scheduling guidelines. Check WebAdvisor to view the following deadline dates by clicking on the class title of a specific class section. Deadlines for short-session classes are determined as indicated below.

- **Deadline to add classes:** Day prior to Census
- **Deadline for refund:** 10% of actual meeting days (Note: in some cases this may be the first day of class).
- **Deadline to apply for pass/no pass option** is the first week for short term classes
- **Deadline to withdraw from class without receiving a “W”:** 20% of actual class meeting days
- **Deadline to withdraw from class and receive a “W”:** 75% of actual meeting days

SOUTHWESTERN COLLEGE

Virtual WELCOME CENTER

Monday through Thursday: 8:00 am to 6:30pm.
Fridays: 8:00am to 3:00pm.

Welcome to this one-stop to connect with us virtually. All of our Student Services departments have personnel to answer your questions.

Your first stop is our Virtual Welcome Center where we can answer general questions. If you require information that is specific to your records and applications, you will be referred to those specific departments. We ask for your patience as there is a high volume of calls.

Even if you know which department you are seeking, we ask that you begin in the Welcome Center because our representatives will be able to give you a comprehensive overview of which departments will best answer your specific questions.

Technical Requirements

You can login to our lobby with MySWC, Google, Facebook, and a Guest Registration. **Students be sure to login with MySWC so we know it's you!**

Most browsers can use the lobby without downloading an application, but for the best experience please use Chrome or Firefox.

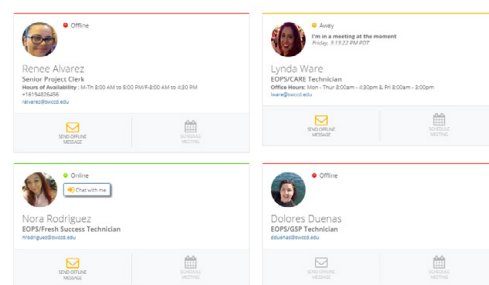
If you would like to use your webcam and microphone during your meetings be sure to read the following:

- **MAC users:** Using Chrome or Firefox is required. Make sure you unblock your camera and microphone before you meet with us. At this time Safari is not supported.
- **IPHONE/IPAD users:** Please download and sign into the CONEXED app through the app store.
- You can test your setup by using the Pre-Meeting check.

Virtual Chat-Connect with us using Cranium Café

- Student Services is also available for live chat and video meetings. Find an online staff/faculty member, click "chat with me," sign in and begin your chat.

- **Applicants:** Haven't applied yet but would like to talk to us? Use facebook, google, linkedin, or a create a conexed login and ask away.



Current/Returning Students: Use your MySWC login so we can verify it's you!

We recommend the following to use this service:

- Know your MySWC login. If you do not have a login or SWC ID, please consider applying to the college.
- All PCs, Laptops, Macbooks, as well as Android devices are compatible but will require you to use Chrome or Firefox. At this time Safari will not work.
- Apple iOS users (iPhone and iPad) must have the ConexED iOS app installed and logged in prior to starting a video chat.
- Use this service in a quiet and private environment.



Important Information

Student Support and Success Steps

Complete the steps listed below to get you on the right track to Student Success!

Don't delay!

Assessment and Prerequisites

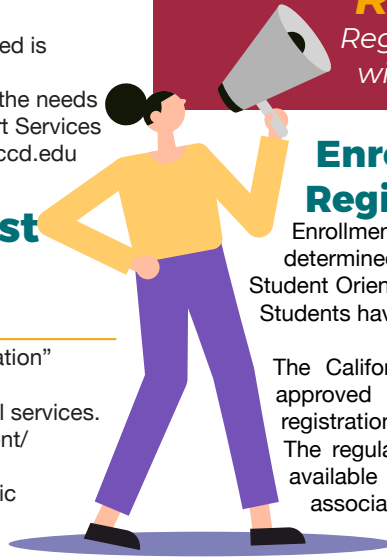
Approximately 15 minutes

- Most students should receive an email with information about Reading, English, and Math placements or a request for more information shortly after applying to the college.
- Students who cannot be placed based on high school data will need to schedule a Guided Self-Placement session. Email SWCAssessment@swccd.edu to schedule a time.
- More information about how placements are determined is available on the Assessment website.
- Individualized accommodations are available to meet the needs of students with disabilities. Contact Disability Support Services (DSS) at 619-482-6512/VP 619-207-4480 or dss@swccd.edu

Student Orientation and First Semester Plan

Approximately 45 Minutes Online

- Log into WebAdvisor and select "New Student Orientation" located under the Online Orientation link.
- Student Orientation informs you about important initial services.
- Informs you for Reading, English, and Math assessment/ placement process.
- Prepares you for the registration process and academic planning.
- Within the Student Orientation, you must complete your First Semester Plan and submit electronically. (This will qualify you for a registration date.)
- Complete the quiz to finish Student Orientation.



*Students need to complete these **3 Steps** to be eligible for **Enrollment Priority***

Registration.

Registration information will be emailed to you.

Enrollment Priority Registration

Enrollment priority and the registration date will be determined when students have completed: 1) New Student Orientation 2) Placement, and 3) First Semester Plan. Students have to be in a Good Academic Standing.

The California Community College Board of Governors approved a policy change to establish system-wide registration priorities in an effort to improve student success.

The regulations are designed to ensure that classes are available for students seeking career advancement, an associate degree or transfer, and to reward students who are making academic progress towards their academic goals. Consequently, enrollment

priorities have been redefined and changes have been in effect since Fall 2014.

Under the regulations, new or returning students who have completed assessment, orientation, and the student education plan, as well as continuing students in good academic standing who have not exceeded 100 units (not to include units in Basic skills or English as a Second Language) will have enrollment priority over students who do not meet these criteria. Students will now register for courses according to an enrollment priority system as defined by Title 5 regulations and the Southwestern Community College District.

Level 1

State-mandated enrollment priority groups: Homeless/Foster Youth or Former Foster Youth, Homeless Youth, Active Military, Veterans, EOPS, DSS, CalWORKs, and Tribal TANF

Level 2

College enrollment priority groups: Associated Student Organization-Executive & Senate Members, District Identified Learning Communities, MESA, University Links, Vocational Rehabilitation, Honors Program, and eligible student athletes

Level 3

SWC Early Admission Program students (Fall term only)

Level 4

Continuing Students in good standing with less than 100 degree-applicable units completed at SWC

- a).....50 units–90 units
- b)30 units–49 units
- c).....0–29 units
- d)90 units–99 units

Level 5

Open Enrollment–New and Returning students on a first come, first served basis

Level 6

- Student who have lost enrollment priority enrollment
- Students with 100 or more units

What can I do if I lose my enrollment priority?



Enrollment priority shall be lost at the first registration opportunity after the student:

- Placed on academic or progress probation for two consecutive terms; or
- Earned 100 or more degree applicable semester units

Students who have lost enrollment priority can

petition to appeal their status, if they can provide documentation for the following area:

Extenuating Circumstances:

Extenuating circumstances are verified cases of accidents, illnesses or other circumstances beyond the control of the student. Examples of documentation include: medical records, police reports, court documents, etc.

Students with Disabilities: Academic Accommodations

Student with disabilities should contact Disability Support Services (DSS) for questions regarding enrollment priority at 619-482-6512, VP 619-207-4480, dss@swccd.edu.

Students who have demonstrated significant academic improvement:

Students who have demonstrated significant academic improvement defined as achieving no less than the minimum grade point average and progress standards. Examples of documentation include: Transcript which shows academic improvement in a minimum of two semesters.

Students who are enrolled in high unit majors or units in categories listed below:

Students who are enrolled in High Unit Majors or have accumulated units from Advanced Placement, 2+2 or Credit by Examination.

Honor Students:

Honors Students who have no other available opportunity for honor addendums, based on their academic goal. Examples of documentation include: Honors addendum contracts for the completion of at least 15 semester units and Student Education Plan. (Conflict in work or class schedule is not a valid reason not enrolling in an honors addendum)

Final semester before degree certificate and/or Transfer Completion:

Student is within his/her final semester of degree, certificate and/or transfer completion. Examples of documentation include: Student Education Plan, updated transcript must show only the remaining classes before graduation.

Petitions available online at www.swccd.edu (click on Admissions and Financial Aid, then Admissions Form).

How to Apply and Register Seven Easy Steps to Enrollment!

7 Steps



STEP 1: Apply Online for Admission

STEP 2: Assessment and Prerequisites

STEP 3: Complete New Student Orientation and First Semester Plan

STEP 4: Registration

STEP 5: Pay Fees

STEP 6: Send Your Transcripts

STEP 7: Access College Services (after you have applied)

Step 1: Apply online for Admissions

Go to www.swccd.edu/apply. New and former students (anyone not registered for the Spring 2021 semester) must complete the College admissions application.

Step 2: Assessment and Prerequisites

Follow these steps:

- Complete New Student Orientation
- Review the email regarding placement that you received shortly after completing the application.
- If needed, schedule a Guided Self-Placement session.
- Be sure to complete these steps prior to registration. The results will help you select appropriate English and math courses.
- Students who have coursework from other institutions or AP scores can submit a petition to have them evaluated for prerequisite clearance. More information and necessary forms are available at <http://www.swccd.edu/prerequisites>.
- The Assessment Center can be reached at SWCAssessment@swccd.edu. or via Cranium Café Visit <https://www.swccd.edu/student-support/assessment-testing/index.aspx> for assessment procedures and policies.
- Students enrolling in online classes are not required to attend an on-campus assessment but should complete the online orientation. Contact the Assessment Office for more information.
- Individualized accommodations are available to meet the needs of students with disabilities. Contact Disability Support Services (DSS) at 619-482-6512/VP 619-207-4480 or swccd.edu/dss

Step 3: New Student Orientation and First Semester Plan

Orientation is required of all new students who are planning to complete a degree, certificate, or transfer to a university. Learn all about college resources, general education, major requirements, and select the best courses for your first semester plan. Access the Online Orientation through the college website WebAdvisor link or MySWC - my.swccd.edu.

- Log into MySWC/WebAdvisor and select “New Student Orientation” located under the Online Orientation link.
- Student Orientation informs you about important initial services.
- Informs you for Reading, English, and Math assessment/ placement process.
- Prepares you for the registration process and academic planning.
- Within the Student Orientation, you must complete your First Semester Plan and submit electronically. (This will qualify you for a registration date.)
- Complete the quiz to finish Student Orientation.

Step 4: Registration

Register for classes on WebAdvisor on or after your registration date, or visit swccd.edu/virtualchat for assistance.

Before you register

- Refer to your registration appointment to ensure that you are registering online via MySWC/Webadvisor on or after your assigned registration time.
- Clear any outstanding fees or holds.
- Meet prerequisites. Unofficial transcripts or grade notices can be used for prerequisite review. (www.swccd.edu/prerequisites)
- Develop an Abbreviated Student Educational Plan (SEP) through New Student Orientation or visit the Counseling Center virtual chat for assistance: swccd.edu/counseling.

Registration Online

To register go to MySWC (<http://my.swccd.edu>), enter your User ID and Password and click “Log in”. First-time users will need to set up their account for their password. Former users: Click on the “Forgot password” link on MySWC. Follow the steps and a verification code will be sent to your cell phone or email address. This will enable you to set up a new password for MySWC, which will also be your new WebAdvisor password.

Step 5: Pay Fees

Students may pay their fees online through MySWC/WebAdvisor or by phone - please call Student Accounts at 619-482-6314.

For Summer 2021, there will be one drop for nonpayment date: May 19, 2021. If a student owes more than \$184 by Wednesday, May 19, they will be dropped from classes that cause their unpaid balance to be in excess of \$184. The drop sequence will be from last enrollment to first. Students will be allowed to enroll again immediately. After May 19, students are responsible for dropping their classes by the appropriate refund deadlines or they will be financially responsible.

If a student is registered or active in any class after the term begins, it will be the student’s responsibility to drop themselves if not attending. Non-payment or non-attendance does not release the student from this responsibility and may result in a failing grade being issued with fees owed.

Fee payment method

Students may pay fees by credit card

Optional: Fee waivers and grant funding may be available as a method of payment. For more information on applying for Financial Aid visit our website at www.swccd.edu/financialaid

Step 6: Send your Transcript

Official transcripts from all accredited external institutions attended are needed to award credit for degrees and certificates. College transcripts will be evaluated by the Evaluations Office located in the Student Services Center. Official transcripts must be sent directly from other schools, colleges and universities to the Admissions Office. Hand-carried transcripts will not be accepted. If you have ever attended another college or university, request transcripts be sent to:

Southwestern College, Admissions Office

900 Otay Lakes Road
Chula Vista, CA 91910

OR electronically to Admissions at admissions@swccd.edu

Step 7: Access College Services after you have applied

Visit the Virtual Welcome Center <https://www.swccd.edu/student-support/virtual-welcome-center.aspx> for assistance or the college website for a full list of student services in the following departments:

- Counseling Center - swccd.edu/counseling— Visit Cranium Café for quick questions. After the second week of the semester, schedule an individual appointment with a College counselor to develop your Student Education Plan (SEP).
- Career Center - swccd.edu/careercenter— Learn more about your personality, interests, and strengths and how they relate to your major and career.
- First Year Experience (FYE) - swccd.edu/fye— Join with other new students to learn all about higher education and skills for success.
- Transfer Center - swccd.edu/transfercenter— Learn how SWC prepares you for transferring to the university.
- Disability Support Services- swccd.edu/dss— For students with disabilities to request support and accommodations for their classes.
- EOPS - swccd.edu/eops— Apply for over-and-above college support, counseling, and book service.
- Financial Aid Office - swccd.edu/financialaid— Provides assistance in applying for and receiving aid and scholarship information.
- Student Employment Services - swccd.edu/ses— Assistance in finding a part-time job or a career job once you have completed your training.
- Evaluations Office - swccd.edu/evaluations— Petition for graduation. Have external college transcripts evaluated for SWC credit.
- Veterans Services - swccd.edu/veterans— Offers support if you are in the military, a veteran, or qualified member of the family.
- Resource Center - swccd.edu/resources— Provides community resources to all students.

Student Equity and Achievement Program (SEA)

The Student Equity and Achievement Program (SEA) is a State of California categorically-funded program. The intent of the SEA Program is to support the California Community Colleges in advancing the system-wide goal to increase achievement for all students with an emphasis on eliminating achievement gaps for students from traditionally underrepresented groups. Southwestern College's goal is to implement activities and practices that align with the Jaguar Pathways model, provide support services to students who enter college, offer quality curriculum and instruction, and ensure students complete their educational goals in a timely manner.

Southwestern College agrees to:

- Provide orientation services
- Evaluate English, math and reading skills—through appropriate course placement.
- Provide application and registration assistance.
- Provide access to counselors who can help with education planning.
- Monitor student progress and keep you informed about campus resources.

Student agrees to:

- Explore the fields of study and declare a major and educational goal.
- Participate in a required course placement session and orientation session (online or in-person).
- Adhere to prerequisite and corequisite requirements.
- Develop a comprehensive Student Educational Plan (SEP) with a college counselor.
- Attend and successfully complete the courses in which you enroll.

All students are required to participate in on-boarding services, unless they are exempted by the following:

- Already have earned an Associate or Bachelor Degree.
- Are attending SWC for: personal enrichment, noncredit courses only, upgrading job skills, enrolled in apprenticeship or career technical programs, or are concurrently enrolled in another college or university.
- Exempt students may not receive a registration date by not participating in on-boarding services.

Fees and Refunds

* At the time of publication, the Enrollment Fee is \$46 per unit (Example: a 3-unit course is \$138) Note: All fees are subject to change. Enrollment Fees are set by the California Legislature.

Registration Fees

Required Fees

Enrollment Fee \$46 per unit
Waived for CCPG (BOGFW) recipients.

Non Resident Tuition \$289 per unit
Plus other registration fees.

Course/Materials Fee (if applicable) Cost Varies

All student fees are set in accordance with the California Legislature and are subject to change. The enrollment fees set by the Legislature apply to every community college in the State. In the event the Legislature increases fees, students will be responsible for paying the difference. Students who have already registered for classes will be billed for the difference in accordance with any new state requirement.

Payment Plan

Information:

Tuition Payment Plans Now Available

Southwestern College is pleased to announce the availability of tuition payment plans for students! These plans are designed to help fill the gap of tuition/fees that financial aid does not cover.

If you're interested, please go to: <https://www.swccd.edu/admissions-and-financial-aid/tuition-and-fees/payment-plans.aspx> review the FAQs, and then head over to WebAdvisor on MySWC. Look for the View Account and Make Payments link in the Financial Information menu under WebAdvisor for Students.

How much does it cost?

- There is a \$25.00 nonrefundable fee charged each semester you establish a payment plan. There is no additional payment required until your plan begins. You must owe at least \$100 to eligible for a plan.
- There are no charges for interest, late fees, paying using a debit or credit card.
- Your plan will adjust automatically as you add or drop classes.



DISCLAIMER While every reasonable effort is made to ensure that statements in the schedule are accurate, the information contained herein is subject to change or elimination without notice by the administration of the Southwestern Community College District. Students should consult the appropriate campus, campus/district website or department for current information, as well as for any special rules or requirements imposed. Class listing information is as of 04/2021. **Please visit:** www.swccd.edu/WebAdvisor for most current scheduling information.

Health Fee

Pursuant to Education Code and District policy, Southwestern College has a mandatory health fee. The summer session has a health fee of \$18. The health fee and/or health fee exceptions are subject to change should the State Legislature take action to change them. Students may petition for exception for the following reasons:

- Students who depend exclusively on prayer for healing in accordance with the teachings of a bona-fide religious sect, denomination or organization;
- Students who qualify of a California College Promise Grant (CCPG-A) to cover enrollment fees;
- High School students enrolled at the Sweetwater Union High School District taking designated classes at high school sites only;
- Students attending under an approved apprenticeship training program;

Health Fee**

0.5 to more units \$18*

Refer to Health Services Center for services.

Accident Insurance/Liability Fee\$2

** Upon request, the health fee will be refunded to any student who withdraws from all courses prior to the 10% date of the length of the course.

Other Fees

Student Center Fee—\$1 per unit—\$10 maximum per academic year. (Students on AFDC, SSI, or General Relief are exempt from this fee)

Student Activities Fee—\$8 per semester

Student Representation Fee - \$2 per semester – Effective January 2020

Students may petition to be exempt from the fee

(Assembly Bill 1504 – Fee to support the Student Senate of the California Community Colleges (SCCC) and SWC student leaders promote the viewpoints of our students to federal, state and local governments.

Returned Check Service Charge

Checks returned for non-sufficient funds or “Stop Payments” must be paid by MasterCard, VISA, Discover, American Express, cash or money order, and a \$25 service charge will be added to the amount of the check. Your enrollment at Southwestern College, as well as your credit, may be affected.

Refund Policy

A student will be refunded registration fees for course withdrawals made before the first two weeks of instruction for a primary term (Fall and Spring semesters) or by 10% point of actual class meeting days. Please check with MySWC/WebAdvisor for dates for specific classes.

- Mandatory fees to include health, student center, and material fees are also subject to the above policy.
- A class added after the refund deadline is not eligible for a refund.

Refunds are not automatic.

Eligible students should request a refund in person or by phone at any Cashiers Office at the following locations: Chula Vista Campus 619-482-6314; Higher Education Center, Otay Mesa 619-216-6750; Higher Education Center, San Ysidro 619-216-6790, ext. 4902 or 4903; and Higher Education Center, National City 619-216-6665, ext. 4853.

You may also download and complete the Refund Request Form and submit as stated on the form. Please allow 3–4 weeks for receipt of your refund check.

Accounts of students who officially withdraw from class by the refund deadline will be credited. It is imperative that the student’s current address be on file in Admissions and Records. (Title 5–Section 58508)

Refund Deadlines

Students who officially withdraw from class by the refund deadline will be mailed a refund upon request only. It is imperative that a current address be on file in Admissions. Refunds may take up to four weeks after the receipt of the refund request. In most cases refunds will not be processed until after the refund deadline.

Parking Information and Fees

Parking Permits

All summer class offerings will be held online and there is no need for students to purchase a parking permit for the summer sessions. However, all persons who park their vehicles on District campuses are subject to paying for a daily or visitors permit, per the District parking policy.

Daily permits allow the purchaser to park in white-lined spaces. Visitor permits allow the purchaser to park in short-term green-lined spaces (1 hour maximum). Persons with valid disabled placards and license plates may park in marked disabled parking spaces or white-lined spaces without charge.

Vehicles found parked without permits or those parked in violation of the District’s parking policy are subject to being cited.

Financial Aid and Scholarships

Financial Aid

www.swccd.edu/financialaid

The Financial Aid Office offers a full array of financial aid programs, in the form of grants, fee waivers, employment, loans, and scholarships. These funds are intended to assist students with the cost of education, which includes fees, books, supplies, food, housing, transportation, and personal expenses. Additional information on Financial Aid programs and services can be found at www.swccd.edu/financialaid.

Application Procedure

Step 1—Apply

Submit a Free Application for Federal Student Aid (FAFSA) at www.fafsa.gov. AB540 students without a valid social security number should submit the California Dream Act Application at <https://dream.csac.ca.gov/>. The Federal School Code for Southwestern College is 001294.

Step 2—Submit Forms

Submit forms online at <https://go.swccd.edu/dropbox>

Step 3—Application Processing

Meet Satisfactory Academic Progress (SAP) standards to be eligible for award.

Have file reviewed for completeness and respond to requests for any additional documentation or information.

Step 4—Financial Aid Awarding

Review award letter email or view awards on WebAdvisor and register desired method of disbursement.

Financial Aid Programs

Federal Programs

- Federal Pell Grants are awarded only to undergraduate students who display exceptional financial need and have not earned a bachelor's, graduate, or professional degree. Pell Grants are funds that do not need to be repaid, except under certain circumstances, and the amount of money awarded is based upon a student's need and the number of units enrolled. In certain situations, an eligible student can receive up to 150 percent of his or her scheduled Pell Grant award for an award year. For more information, go to <https://www.swccd.edu/admissions-and-financial-aid/financial-aid/financial-aid-types/grants/pell-grant.aspx>.
- Federal Supplemental Educational Opportunity Grant (FSEOG) is awarded to eligible undergraduate students with exceptional financial need. It is awarded based on eligibility and the date of FAFSA submission. Funds are limited and dependent upon availability.
- Federal Work-Study (FWS) is a program which provides employment to help pay for part of a student's educational costs and is based on financial need. Students on FWS may work approximately 15 hours per week on or off campus.
- William D. Ford Federal Direct Subsidized and Unsubsidized Loans are funds that must be repaid. Loan amounts follow federal guidelines and will be determined at the time the Financial Aid Office certifies a loan application. Both entrance and exit counseling are required and students must maintain at least half-time enrollment status to receive a loan. For more information, go to www.swccd.edu/faloans

State Programs

- **CALIFORNIA COLLEGE PROMISE GRANT (CCPG)** formerly the Board of Governors Fee Waiver, is a program that waives the \$46/unit enrollment fees for eligible students. Students must be California residents or verified AB540 students and meet the requirements in one of the following categories:
- **BOGFW A:** Student or parent must currently be receiving Temporary Assistance for Needy Families (TANF), CalWORKs, Supplemental Security Income (SSI), State Supplemental Program (SSP), or General Assistance (GA). Documentation is required.
- **BOGFW-B:** Student must meet income standards based on family size. Documentation may be required.
- **BOGFW-C:** Student must have applied for FAFSA and demonstrate required level of financial need.

IMPORTANT: Effective Fall 2016, there were important eligibility changes to the CCPG program. Students who are placed on academic and/or progress probation or disqualification in two consecutive primary terms (fall and spring) will lose eligibility for CCPG at the first registration opportunity after the determination is made. Students will be notified within 30 days of the end of the term, which will include information about available student support services. Students will have the ability to regain eligibility via appeal, working back into satisfactory academic status or sitting out two consecutive primary terms. There are special consideration factors for CalWORKs, EOPS, DSPS, and student veterans. Foster youth and former foster youth who are 24 years old and younger are exempt from these regulations. For more information, please go to www.swccd.edu/bogfwchanges.

- **CAL GRANTS A, B & C** are state-funded grants given to California college students and do not have to be repaid.
- Students must be California residents or verified AB540 student, enrolled at least half-time (6 units), have a high school diploma and meet federal aid requirements. Cal Grants B & C are the only CalGrant awards offered at SWC.
- **AB540 STUDENTS:** Under AB131, eligible students who are registered as AB540 are entitled to receive CalGrants. Students with valid SSNs should complete the FAFSA application and students without SSNs should complete the California Dream Application.
- **CHAFEE GRANTS** are administered by the California Student Aid Commission (CSAC). The program is for foster or former foster youth to help pay for college, career or technical training. Funding is limited.

- The **STUDENT SUCCESS COMPLETION GRANT (SSCG)** is a state grant provided to students to help offset the total cost of community college attendance. It incentivizes students to enroll at least full time and to ensure on-time completion of their program of study. Students must be receiving the Cal Grant B or C and be meeting Satisfactory Academic Progress standards. Students enrolled in 12–14 units each term (fall/spring) will be eligible for up to \$1,298 annually and students enrolled in 15 units per semester will be eligible for up to \$4,000 annually. Students may also use units enrolled in the summer term to maximize program eligibility. SSCG is a state funded program and is subject to the availability of funds each year.

Scholarships

A scholarship is aid that does not have to be repaid. Our scholarship cycle occurs during the Spring semester. Visit our website for information on scholarships and scholarship eligibility, at www.swccd.edu/scholarships.

Disbursements

Financial aid disbursements are made on a regular basis by the Finance Office. Students awarded financial aid may receive their aid by electronic deposit made to a student's existing bank account, paper check, or deposit directly to the BankMobile VIBE! Card. The disbursement schedule can be viewed at www.swccd.edu/fadisburse.

Withdrawal from Courses and Return of Title IV Funds Financial Aid funds are awarded under the assumption that students will attend school for the entire payment period or period of enrollment for which the aid was awarded and will complete all the units on which their award was calculated. Students who withdraw from all classes will have the amount of Title IV Federal Financial Aid that was earned and are entitled to keep determined by a mandated federal formula. The Freeze Date for Summer 2020 is Saturday, June 20, 2020.

Satisfactory Academic Progress (SAP) Standards

Federal and state financial aid regulations require Southwestern College to establish, define, and apply Satisfactory Academic Progress standards for all financial aid applicants. The regulations require that SAP be evaluated every academic year, and measure both the qualitative standard (cumulative GPA) and quantitative standards (completion rate, Pace) and (Maximum Time Frame). Students enrolled in a program of less than two years (Certificate of Achievement) are reviewed for SAP after the end of every semester. All periods of enrollment at Southwestern College and applicable transferable units from other colleges will be included as part of the SAP review.

- **GRADE POINT AVERAGE (GPA) REQUIREMENT (QUALITATIVE)**—students are required to maintain a minimum cumulative GPA of 2.0 or better.
- **UNIT COMPLETION RATE**—Pace of Progress (Quantitative) students are required to complete a minimum of 67% of the units in which they have enrolled. All units are considered in this calculation. Units for which a grade of W, I, NP and/or F was received are considered as units attempted but not completed.
- **MAXIMUM TIME FRAME (QUANTITATIVE)**—students must complete their academic program within a maximum time frame of 150% of the published program's required units. For example, associate in arts, associate in science and transfer degrees generally require 60 units to complete, so 150% of these programs would be 90 units.
- Repeated courses will count toward the 150% maximum units allowed.
- The maximum time frame will not be extended for students who change academic programs or have prior degrees or certificates.
- Students who have a bachelor's degree or higher from a domestic or foreign school have exceeded the maximum time frame and will not be eligible for additional financial aid.

Students who are disqualified have the right to appeal the decision, by participating in a SAP Workshop and providing a written statement describing the extenuating circumstances and experiences, detailing what has changed and how those changes will ensure future academic success. More information can be found at www.swccd.edu/sap.

More information on all financial aid programs, policies, and procedures can be found at www.swccd.edu/financialaid.

Registration Policies and Definitions

NOTE: All forms are available online at www.swccd.edu: Under Admissions & Financial Aid click "Admissions Forms." Assistance and processing are available at the Chula Vista campus and Higher Education Centers at National City, Otay Mesa, and San Ysidro, or in our Cranium Café lobbies.



Adding Closed Classes

Once classes start, students need to attend the first class meeting to obtain instructor approval to enroll. If space permits, the instructor will issue an add code. Students can use add codes on MySWC/WebAdvisor or go to any of the Admissions Offices for assistance with WebAdvisor. Students adding online classes need to contact their instructors to request add codes for enrollment. If there is space, the instructor will issue the add code via email. After acquiring the add code, students can enroll in the course on MySWC/WebAdvisor. Note: Students on the waitlist will be given first priority if space becomes available.

Cancelled Class

A cancelled class means that the College is unable to offer the class. The College reserves the right to cancel any class after the schedule goes to print.

Closed Class

A class closes when the maximum seat capacity has been reached. During registration a waitlist is created. Students wishing to register for a closed class after class begins must go to the class or contact their instructor for online classes. See entry above, "Adding Closed Classes," for additional information.

Corequisites

A corequisite is a course which must be taken during the same semester as another course. In other words, when a course has a corequisite listed, you must register for those courses (often a lecture and lab) concurrently. Knowing the information being presented in the corequisite course is deemed necessary for successful completion of the other course(s). When dropping or withdrawing from a course that has a corequisite, both courses must be dropped concurrently. Corequisites are enforced at Southwestern College. Students may challenge corequisites; see College Catalog for challenge policy and procedures.

Course Repetition

A student may not register for a class in which a passing grade has previously been received, or for which the maximum repetitions have been completed.

A student may receive a maximum of any combination of three (3) substandard academic grades (D, F or NP grade) and/or “W” withdrawal symbol on the official record for enrollment in the same course. If the student can demonstrate extenuating circumstances requiring one additional repetition, the student may petition. Students should attach supporting documentation. Extenuating circumstances are verified cases of accidents, illnesses, or other circumstances beyond the control of the student.

See “Academic/College Policies” in this class schedule for additional information.

Duplicate Course

Students may not register or waitlist for two (2) classes with the same course number and title.

High School Special Admissions

High school students who are enrolled in grades 10–12 may be admitted for concurrent enrollment at SWC. A High School Special Form signed by the high school principal and high school counselor is required. All necessary forms and instructions are available at Admissions and Records. Enrollment is limited to no more than six (6) units per semester or summer session. See the SWC College Catalog for more information.

Students enrolled in home school programs must meet one of the following criteria:

1. The home school program must be affiliated with a county department of education program, or
2. Must be taught by a person holding a California teaching credential, or
3. Must hold a current private school affidavit filed with the State Superintendent of Public Instruction.

Limitation on Enrollment

Performance courses may require students to try out for intercollegiate athletic teams or to audition for courses involving public performances prior to enrollment.

Enrollment in blocks of courses or sections may be a requirement so that a group of students will enroll together in that set of classes. Typically the students are part of a special program such as a Learning Community.

Enrollment may be limited due to legal requirements (imposed by statute, regulation, and/or contract). For example, some courses may require that the student have a valid driver license, a health clearance, a nursing license or certificate, etc.

Limitations on enrollment are enforced at Southwestern College. Students may challenge limitations on enrollment; see College Catalog for challenge policy and procedures

Online Class Restrictions

In accordance with federal regulations, Southwestern College may not permit students residing outside of California to enroll in online classes.

Prerequisites

When a course has a prerequisite, students must have specific knowledge or skills to register for and be successful in the course. The prerequisite can be a skill, a placement result or successful completion (grade of A, B, C, or P has been earned) in a prior course. If prerequisites were completed at another college or university, students must bring copies of appropriate transcripts/grade reports and/or placement results to the Assessment Center to clear the requirements prior to registration. Students may challenge prerequisites; see College Catalog for challenge policy and procedures.

Recommended Concurrent Enrollment

A course that a student should complete—but is not required to complete—while enrolled in another course. You are strongly encouraged to follow recommended concurrent enrollment whenever it is listed in the class schedule to improve your chances for success. Enrollment may not be denied to any student not meeting a recommended concurrent enrollment.

Recommended Preparation

A course or previous training that a student should complete—but is not required to complete—to help ensure success in the indicated course. Completion of the recommended preparation course with a grade of “C” or better increases student success. You are strongly encouraged to follow recommended preparation whenever it is listed in the class schedule to improve your chances for success. Enrollment may not be denied to any student not meeting a recommended preparation.

Registration Statement

The Registration Statement is proof of enrollment or waitlist status in classes. Registration statements can be obtained through MySWC/ WebAdvisor at any time. Students should review their Registration Statements carefully to verify registration, class meeting days and times, locations and fee payment. Instructors, labs, and any office on campus may request to see a student’s Registration Statement prior to providing services.

See a Counselor

Developing a comprehensive Student Education Plan (SEP) is critical in understanding the requirements and resources needed to successfully fulfill your education and/or occupational goals. Counselors will help you understand the myriad of factors such as previous academic history, course placement results, transcripts, current employment and familial responsibilities, and personal motivation that play an important role in your success.

Thirty unit Remediation Limit

Students will not receive credit for more than 30 units of remedial or basic skills courses in the District. A student who exhausts this unit limitation will be referred to appropriate noncredit continuing education services.

Time Conflict/Class Overlay

Students are not permitted to register for two (2) classes that are scheduled during the same or overlapping time periods, even if the instructor will allow it. This includes online and/or hybrid courses with mandatory on-campus meetings that conflict with other on-campus courses. Class overlays are only allowed by petition, and never for courses that overlap more than 15 minutes per day or 30 minutes per week.

Waitlist

Waitlists will become available at the beginning of the registration period as classes fill. As a student drops from the class roster, the first student on the waitlist will be notified by email and on the "Manage My Waitlist" page of WebAdvisor of the reserved space available to register in the class. The student will have three (3) calendar days to register in the class and make payment for the class. If the student does not register in the class within three (3) days, they will be dropped from the waitlist.

NOTE: Students who do not meet eligibility requirements will not be moved into the class.

If you add yourself to a waitlist and enroll for another section of the same course you will be dropped from the waitlisted course. The waitlist may be used during the first week only. Instructors will issue add codes and have students take the codes to Admissions or enter their add codes in WebAdvisor. Students may register with add codes on WebAdvisor at <https://webadvisor.swccd.edu>.

Academic/College Policies

Academic Accommodation

Students with verified disabilities who may require academic accommodations or auxiliary aids are strongly recommended to contact the Disability Support Services Office (DSS) early to ensure timely provision of services. Students are encouraged to identify themselves to the appropriate instructors to discuss the details and timelines necessary to provide appropriate accommodations. Students enrolled in online courses are encouraged to contact DSS to request academic accommodations. DSS Contact: dss@swccd.edu

Academic Honesty

Academic honesty is expected from all students at Southwestern College. Dishonesty in the classroom, cheating or plagiarism, and/or knowingly furnishing false information to the College are grounds for discipline. (See Standards of Student Conduct procedure).

Address and Telephone Changes

Students can update their mailing address, email address, and telephone number on WebAdvisor at <https://webadvisor.swccd.edu>. Failure to comply will result in an administrative hold. This information is critical in receiving emergency and safety information by email, cell phone, etc.

Attendance

Each student is expected to attend every class meeting. In the case of absence, it is the student's responsibility to inform the instructor. Instructors may drop any student who fails to attend the first class meeting if the class is at maximum enrollment and other students are waiting to enroll. Online students must login and perform any requested tasks on the first day of class to confirm attendance.

Auditing Courses

If you want to take a class to learn a new language or new skill and don't need the college credit, auditing may be an option for you. To audit a class you need to obtain a course audit petition form before you go to the class. Audit petitions are available in any Admissions office or online under Admissions & Financial Aid, then Admissions Forms. If there is space available, the instructor will sign the form. You must return the form to any Admissions Office for processing. Students taking the class for college credit have first priority for acceptance.

The charge for auditing is \$15 per unit plus the mandatory health fees. A maximum of six (6) units may be audited in any regular instructional term (fall, spring, and/or summer). If you are enrolled for college credit in ten (10) or more units, you may audit one (1) three-unit class for free. Once you choose the audit option for a class you cannot change to college credit.

Catalog

For further information on courses and College policies and procedures - see the Southwestern College online catalog on our website at catalog.swccd.edu.

Class Cancellations

Southwestern College reserves the right to cancel any class for which the enrollment is not sufficient to warrant continuation and to change the class hours and/or days as necessity demands.

Consumer Information

In accordance with federal regulations as set forth in the Higher Education Act, Southwestern College provides a variety of required information to students. This includes the College Navigator, Net Price Calculator, campus safety reports (including Clery reporting), Drug and Alcohol Abuse Prevention Program information, FERPA, Student Right to Know, Equity in Athletics information, and Financial Aid and academic policies. For more information, please go to www.swccd.edu/consumerinfo or contact the Office of Communications, Community and Government Relations at 619-482-6304 or via email at cmrrequest@swccd.edu

Course Repetition

Students may petition to repeat courses under the following circumstances:

Course repetition due to substandard grades and/or withdrawals: Students are allowed a maximum of three substandard grades (D, F, or NP) and/or withdrawal (W) in a course. Students may petition to repeat and attach supporting documentation to demonstrate extenuating circumstances requiring one additional repetition. Extenuating circumstances are verified cases of accidents, illnesses, or other circumstances beyond the control of the student.

Course Repetition of Previously Passed Courses

Students may file a petition to repeat a course in which a grade of “C” or better was earned. Please refer to the catalog for the details and requirements for the Course Repetition and Repeatable Courses. Petitions are available online and can be submitted to any Admissions Office if the following conditions are met:

- I. Significant Lapse of Time
- II. Variable Units–Open Entry/Open Exit
- III. Occupational Work Experience
- IV. Special classes for students with disabilities
- V. Legally Mandated Training
- VI. Significant Change in Industry

Descriptions of Courses

Course descriptions can be found in the College Catalog, WebAdvisor, or on the College website at www.swccd.edu.

Dropping Students from Classes

- Instructors will drop any student who fails to attend the first class meeting or fails to login and perform any requested tasks for online students if the class is at maximum enrollment and other students are waiting to enroll.
- Students will be dropped from a class for lack of a prerequisite.
- During the add period of the term, instructors will drop a student from a class with or without an explanation for never attending class, unless the student has contacted the instructor and the instructor has granted an excused absence.
- After the add period of the term, instructors may drop a student from a class if the student’s total hours of absence for any reason exceed twice the number of hours the class meets per week (for short term classes, twice the number of hours as hours listed for the class in the schedule).

Email Address Change

SWC provides active students with @swccd.edu email addresses. Official communications from SWC will be sent via that email address. Your SWC email can be accessed via MySWC at my.swccd.edu.

Grades

Grades are only available online to students through WebAdvisor approximately ten (10) days after the course end date. Students can check daily for grade posting at <https://webadvisor.swccd.edu>.

Name Change

Currently enrolled students who wish to change their name must file a “Name Change” form with any Admissions Office. Two forms of government-issued identification are required to process the name change. Students who would like a preferred first name that is different from their legal name to appear on class rosters and the online environment can make this request at the Admissions and Records office. Forms can be obtained online at: <https://www.swccd.edu/admissions-and-financial-aid/admissions-forms/>

Open Enrollment

It is the policy of the Southwestern Community College District that every course, section, or class, wherever offered and conducted throughout the District, shall be fully open to enrollment and participation by any person who is eligible for admission to the College and who meets such prerequisites as may be established pursuant to Chapter 11, Division 2, Part VI, Title 5 of the California Administrative Code, commencing with Section 51820.

Pass/No Pass (Formerly Credit/No Credit)

Students may petition to receive Pass/No Pass for classes offered as regular graded courses (A, B, C, D, or F), with instructor approval by the end of the fourth week of the semester or the first week of a short session class. The form is available online at www.swccd.edu, click Admissions & Financial Aid, and then Admissions Forms. Refer to the Southwestern College Catalog for courses that are GRADED only.

Student Holds

Students may have grades, diplomas, and registration privileges withheld for financial obligations such as returned checks, unpaid enrollment fees and/or non-resident tuition, unpaid loans, unreturned equipment, equipment breakages, unpaid fines, etc.

Student Records and Directory Information

Pursuant to the Federal Family Education Rights and Privacy Act of 1974, Southwestern College is authorized to verify public directory information concerning students currently attending the College. Directory information includes the student’s name, email address, participation in officially recognized activities and sports, weight and height of members of athletic teams, dates of attendance, and degrees and awards received.

The student directory information may be released by the Dean of Student Services or designee, unless prior written objection is received from the student specifying information which the student requests not be released. Students who wish to have information concerning themselves excluded from designation as directory information must inform Admissions in writing.

Withdrawal Policy

It is the student’s responsibility to officially withdraw from class. Students may drop classes on WebAdvisor at <https://webadvisor.swccd.edu>. A student failure to officially withdraw from a class may result in a grade of “F” or “NP” if applicable.

Short-Term Classes

- To drop with a refund—10% of actual class meeting days—in many cases this may be the first day of class.
- To drop without a “W” grade—20% of actual class meeting days.
- To drop with a “W” grade—75% of actual class meeting days.

Students who withdraw from classes and are receiving a Pell grant may be required to repay some or all of funds received. Please click on “Information” and then “Withdrawals and Return to Title IV” tab on the Financial Aid webpage at www.swccd.edu/financialaid for more information.

In addition, instructors may drop a student for excessive absences; please see the SWC catalog at catalog.swccd.edu. See “Dropping Students from Classes.”

Support Services for Students

Academic Success Center/Learning Assistance Services

Free online tutoring for SWC students is available at <https://www.swccd.edu/student-support/tutoring/> including LAS tutoring via Zoom, evening and weekend tutoring via eTutoring, and asynchronous writing assistance via our Online Writing Lab (OWL).

Appointments for LAS tutoring are available at <https://sarsanywhere.swccd.edu/esars/tutoring>

Summer Online Operational Hours:

Monday through Thursday: 10 AM to 6 PM

For further assistance or inquiries, please contact us via SWCLASTutor@swccd.edu or call 619-482-6348.

Additional live, online tutoring can be accessed via the Western eTutoring Consortium at <https://www.swccd.edu/student-support/tutoring/etutoring.aspx> This service is available seven days a week and most major holidays from 5 a.m. until 12 a.m. Midnight.

Finally we have our Online Writing Lab (OWL) available at <https://www.swccd.edu/student-support/tutoring/online-writing-lab.aspx> This is an asynchronous service that features detailed, written responses to student writing for any class or educational need

Associated Student Organization (ASO)

The Associated Student Organization (ASO) represents all students at Southwestern College and sponsors activities including cultural performances, awards, student clubs, social activities, and student leadership conferences. The ASO is the recognized student government body of the College. The students elect representatives to both the executive and legislative branches. For more information on how to get involved, please contact the Associated Students Organization at 619-482-6568 or visit <https://www.swccd.edu/student-life/associated-student-organization-aso/>

Bookstore

bookstore@swccd.edu

Visit the Bookstore website at www.SWCBookstore.com or Follow us on Facebook for updated information, sales, store hours, rental return reminders, and bus pass information.

General Bookstore Information

- Required course materials are available online at www.SWCBookstore.com.
- Textbooks may be purchased online at www.SWCBookstore.com.
- Textbook Rentals are available year-round. Check website for availability.
- Personal checks accepted; SWC and California ID required; no two-party or payroll checks accepted.
- Visa, MasterCard, and Discover cards accepted.
- Refunds, buybacks - ID Required.
- Used books can be sold back year-round. SWC ID required.
- NO REFUNDS OR EXCHANGES WITHOUT SALES RECEIPT. NO EXCEPTIONS.

Campus Student ID Cards

As a result of the campus closure, the Office of Student Activities will not be issuing student ID cards for Summer 2021 This also applies for all Higher Education Centers and Continuing Education. If you require a student ID card for a specific and verifiable reason, please fill out the: SWC ID Request Form located at <https://www.swccd.edu/student-life/student-activities/>.

Counseling Services

Counseling services assist students with planning for their educational goal: career development and selecting a major, personal counseling, and various other support services. Departments providing these services include: CalWORKs, Career Center, Counseling Center, DSS, EOPS, First Year Experience (FYE), Learning Communities, and Transfer Center.

Disability Support Services

Disability Support Services provides specialized support and services for students with disabilities. Students are encouraged to apply for Disability Support Services in order to obtain services or to enroll in special classes. Services may include: academic accommodations, such as volunteer note takers, sign language interpreters, equipment loans, educational planning, counseling, and other appropriate services which will help the student have a successful educational experience.

Call 619-482-6512 or VP 619-207-4480 or email at dss@swccd.edu for an appointment with a counselor or for general program information. Please refer to the DSS webpage at <https://www.swccd.edu/student-support/disability-support-services-dss/index.aspx>

Disabled Parking

Southwestern College cannot issue temporary or permanent disabled parking passes. Students or Staff who require disabled parking must apply for the official blue disabled plates or placard with the Department of Motor Vehicles (DMV) at any DMV Office. The application will include a section that requires a physician's certification.

For further information, contact your local DMV Office. Only vehicles with state-issued disabled parking plates or placards may park in disabled parking spaces on campus. All other vehicles will be issued a citation by the College Police. Vehicles with a valid state-issued disabled placard or plate may park in any legal parking space on campus. A College parking permit is not required.

Food Pantry

The Jag Kitchen Food Pantry is currently closed due to COVID-19. Resources are still available for students, including our Jag Kitchen To Go Grocery distributions and Basic Needs Request form. Students can also visit the [SWC Cares page](#) for a list of campus and community resources.

While remote, students who are facing food insecurity may be eligible to receive a \$25.00 grocery card.

Eligibility

- Currently enrolled student
- Valid ID

Process

- Complete the Basic Needs Request for located on the SWC Cares page: <https://www.swccd.edu/student-support/more-services/swc-cares/>
- Schedule appointment to pick up card on the CV campus
- Issue one per month, only

Graduation Requirements

Southwestern College recognizes the educational achievement of its students by granting the Associate in Arts Degree, the Associate in Science Degree, and certificates of achievement, completion, or proficiency.

Students are encouraged to plan their educational objectives in such a manner as to qualify for graduation with an associate degree. Degrees or certificates are not awarded automatically upon completion of the requirements. A candidate must submit a petition for graduation online using the Southwestern College website. Click on “Degrees and Certificates” and then “Apply for Degree/Certificate.” Petitions for graduation may be filed at any time; however, students wishing to graduate in a specified semester (fall, spring, or summer) must submit a petition according to specific dates.

Students who have attended other colleges/universities must have all official transcripts forwarded directly to Admissions. All previous course work must be evaluated to determine whether or not it is needed for the associate degree at Southwestern College.

Health Services

A registered nurse provides basic health assessment, health counseling, and referrals to appropriate agencies. Visit <https://www.swccd.edu/student-support/health-services/> for more information.

Library Services

During the COVID-19 campus closure, the Library is able to provide you with research assistance via chat as well as a wealth of online resources. Visit the Library’s website swccd.edu/library where you will find a special guide. You can also contact the Library via email with any questions library@swccd.edu. Once the campus reopens, the Library will continue to be the One Stop Center. Our helpful library staff will assist with all of your information needs. The Library’s collections include print as well as electronic resources. The Library has over 200 computers with applications needed to complete school work. Wireless access, printers, and scanners are also available. Printing and photocopying are available for a fee.

Online Learning Center

The Online Learning Center (OLC) assists SWC faculty and students by offering hands-on support for teaching and learning in the Canvas learning management system for remote and fully online classes (added remote; removed hybrid and face-to face) using Canvas (delete: to augment onsite instruction). The OLC also provides faculty and student training through workshops, webinars, and one-on-one sessions.

Resources that can help SWC students get Canvas-ready include:

SWC Online Learning: web page: orientations, Canvas info, frequently asked questions, and more

Canvas Video Guides: targeted tutorials for a variety of Canvas tasks

Quest for Online Success: self-paced tutorials to prepare for online learning

Personal Wellness Services

Personal Wellness Services (PWS) offers personal counseling sessions for emotional wellness and professional resources and referrals. Visit <https://www.swccd.edu/student-support/health-services/personal-wellness-mental-health/index.aspx> for more information.

Veterans Services & Veterans Resource Center

The Veterans Services Office provides information and services to support veteran students who qualify for and wish to use education benefits. Students are provided with assistance in filing for and receiving benefits, completing required forms, receiving credit for prior coursework and military experience, and meeting required academic progress. For more information, please go to www.swccd.edu/veterans.

The Veterans Resource Center (VRC) provides a centralized location for services for veterans and their families as they transition from military to academic life. The VRC provides a dedicated computer lab, peer support and mentoring, referrals to on and off-campus services, and a lounge and meeting area. For more information, please go to www.swccd.edu/vrc.

Parking Rules and Regulations

On-campus parking is supervised by the Southwestern College Police Department. Parking and traffic are enforced at all times in all Southwestern College locations and parking lots. The following rules and regulations pertain to all vehicles within the jurisdiction of Southwestern College.

If you have any parking related questions that are not addressed here, please contact the Southwestern College Police Department at swcparking@swccd.edu or 619-216-6611.

Parking Policy

1. Students attending the summer session are not required to purchase a parking permit as all course offerings will be held online. However, all persons to include students, who do park vehicles on campus will be required to purchase a daily or visitor parking permit.

2. Parking permits are required and must be visibly displayed on vehicles that park on Southwestern College District campuses. Please make sure the front portion of the permit is facing outward on your front windshield or dashboard. Failure to visibly display your permit on your front windshield or dashboard may result in a citation.
3. The maximum speed limit on campus is 20 MPH. No stopping, parking, or passing is allowed on the perimeter road of the Chula Vista campus at any time.
4. Parking is allowed in marked spaces only. Parking in other areas, such as marked triangle zones, crosshatched areas, along roadways, or along parking lot curb lines is prohibited.
5. Visitor may park within Lot A of the Chula Vista campus in green-lined visitor parking spaces near the north end of the lot. Daily permits can be purchased at any parking permit dispenser throughout campus. Machines accept debit/credit cards and

\$1.00 bills only (no change given). Also see #9 below and “Visitor Permits & Parking” tab below).

6. Health First Fitness Club (HFFC) members may park in designated orange-lined HFFC parking spaces in Lot J. Non-HFFC members are prohibited from parking in HFFC marked spaces and their vehicles may be cited.
7. Parking permit dispensers are available at the Otay Mesa, San Ysidro, and National City campuses. The daily permit cost is \$3.00.
8. All vehicles must have a properly displayed and valid parking permit in order to park on the District’s campuses with the exception of marked disabled parking spaces. It is imperative that a valid disabled placard is visible when parking in a marked disabled parking spaces, including green-lined visitor spaces.
9. Staff parking spaces are identified as yellow-lined spaces. Vehicles parked in staff spaces require a valid staff parking permit at all times. Staff permits are valid in both student and staff parking spaces. They are not valid in green-lined visitor spaces, or marked disabled parking spaces.
10. Student parking spaces are identified as white-lined spaces. Vehicles parked in student spaces require a valid student semester parking permit or a daily parking permit, Monday through Sunday from 7:00 a.m. to 10:30 p.m. Student semester parking permits are available for purchase online through WebAdvisor.
11. Daily permits are valid on the date of issuance only and can be purchased from permit dispensers located in Lots A, B, F, J, O, and T: Visitor permits are valid for one hour and cost \$1.00. Visitor parking is valid in any Lot A green-lined marked visitor spaces only. All day permits cost \$3.00 and are valid in student lots B, C, D, E, F, G, I, J, L, M, N, O, & T in white-lined student spaces only. Machines accept debit/credit cards and \$1.00 bills only (no change given).
12. Motorcycles may be parked in areas designated for motorcycle parking or regular spaces and require a valid semester permit or a daily permit. Since affixing a permit to a motorcycle is not secure, report any citations issued to the College Police Department in Building 22 where assistance will be provided.
13. The purchase of a parking permit does NOT guarantee a parking space. The responsibility for finding a legal parking space rests with the operator of the vehicle. Lack of available parking spaces is not an excuse for illegal parking. Also see #4 above.
14. Southwestern College is not responsible for lost or stolen permits. Replacement permits for students may be purchased through WebAdvisor at full value. Staff may report a lost or stolen permit to the College Police Department in Building 22 located in Lot C or by calling (619) 216-6611. Replacement permits may then be issued.
15. Temporary student, staff, vendor, and visitor permits may be requested and obtained from the College Police Department.
16. Unaccompanied vehicles that are left parked in a loading zone for longer than 15 minutes may be cited.
17. Parking and loitering on campus after 11:00pm or after special events is prohibited.
18. Fraudulent use of parking permits may result in a citation, confiscation, and referral to Student Affairs for disciplinary action.

For parking updates please check: <https://www.swccd.edu/student-support/safety-and-security/parking-services-and-enforcement/>

Transportation Information

Take the trolley to either:

- Chula Vista Bayfront Trolley Station (E St.) and transfer to Chula Vista Transit Bus Route 705A to Plaza Bonita/Southwestern College.
- Chula Vista H St. Trolley Station and transfer to Chula Vista Transit Bus Route 709/709A to Southwestern College/Otay Ranch Town Center.
- Chula Vista Palomar St. Trolley Station and transfer to Chula Vista Transit Bus Route 712 to Southwestern College.
- The Route 707 also provides service from Otay Ranch Town Center to Southwestern College via East H St. and Eastlake Parkway.

For transit information, please visit the www.sdcommute.com website.

For traffic, transit, and travel information, please visit: www.511sd.com.

Recorded driving directions are available by calling 619-482-6520.

College Police

The Southwestern College Police Department is entrusted with the responsibility of serving the campus communities with skillful, dedicated, and compassionate constitutional policing and public safety services. We are committed to achieving excellence through professional and unbiased law enforcement services to our students, staff, faculty as well as the surrounding community by treating everyone with dignity and respect and performing our duties in line with the college community’s values and priorities. We value the civil rights guaranteed to all persons by the Constitution of the United States and the Constitution of the State of California and recognize the importance of procedural justice in our operations.

The College Police Department is staffed with personnel to provide policing and public safety services from the hours of 5:00 am through 12:00 am, Monday through Saturday and 7:00am through 5:00pm on Sunday. Dispatchers are available to answer your calls and inquiries. In response to a call for service, the College Police will take the required action, either dispatching an officer to a campus location or asking the informant or victim to report to the College Police building (Building 22) located in Parking Lot C to receive services or file a crime or incident report.

Campus safety and security is everyone’s responsibility. Students, faculty, staff, visitors, and the College Police share a partnership to create a safe and conducive learning environment. One essential ingredient of any successful crime prevention program is an informed public. Southwestern Community College District seeks to inform students, faculty, and staff members in a timely manner of any criminal activity or security problem that may pose a reasonable threat to their safety. Such information will be distributed to students through the Annual Security Report, newsletters, posted notices, District email, student publications, the District’s website, and through emergency and timely warning notification. The College Police Department posts crime alerts and other safety-related information on its website. All students, faculty, and staff members are encouraged to remain alert and security conscious. Be mindful of your surroundings. Take precautions to lock and secure your vehicle and do not leave valuables unattended. Call for an Escort Service at 619-482-6380 if you have safety concerns as you traverse the campus or parking lots.

Crime Reporting

The College Police Department encourages the prompt reporting of all crimes by victims or others with knowledge of crimes or criminal behavior, disturbances, and circumstances that involve violence, the threat of violence, medical or mental health distress or other emergencies. Timely and accurate reporting is essential to ensure prompt enforcement action, investigative follow-up, effective response to emergencies, quick initiation of Timely Warning Notices, and ensure annual crime statistics are accurately reported. Reporting parties should strive to provide clear and accurate information to ensure an immediate and proper response.

Individuals may also make report crimes to a Southwestern College Campus Security Authority (CSA), identified as an individual employee or college organization that has a significant responsibility for student and campus activities. Campus Security Authorities include all Administrators and Management personnel, College Police personnel, faculty advisors to student groups, and athletic coaches.

The College Police Department can be contacted via phone, via emergency blue pole, through email or in person.

Phone Contact

Emergencies

College Police Emergency 619-216-6691 or Extension 6691 from a Campus Phone or Emergency Phones in classrooms dial directly to College Police when the receiver is off the hook for 30 seconds. All persons are encouraged to dial *91 from a Campus or Office Phone or Utilize Emergency Blue Pole intercoms with College Police from various campus locations and parking lots.

Non-Emergencies

College Police Dispatch 619-482-6380 or College Police TTY 619-216-6628 or Email CampusPolice@swccd.edu

In-Person Service: In person contact and service can be made by going to the College Police Building (Building 22) at the Chula Vista campus during business hours, Monday Through Friday 8 a.m. to 5 p.m.

All reported crimes will be investigated and may become a matter of public record. All student conduct-related incident reports are forwarded to the Dean of Student Services for review and potential action. If assistance is required from the local police agencies or the local fire department, the College Police will contact the appropriate department. If a sexual assault or rape should occur, College Police Officers will offer the victim a variety of services and assistance.

No Smoking Policy

Smoking is prohibited at all campus locations including but not limited to all enclosed places of employment, including enclosed patios, lobbies, lounges, elevators, stairwells, restrooms, and all District-owned vehicles. This prohibition shall apply to all on-campus buildings as well as all extension sites that are owned or leased by the District. Smoking shall be prohibited in all District-owned vehicles. Policy and Procedure No. 3570

Student-Right-to-Know

In compliance with the Student Right-to-Know (SRTK) and Campus Security Act of 1990 (Public Law 101-542) and as a service to its community, the Southwestern Community College District makes available its completion and transfer rates to all current and prospective students.

Beginning in Spring 2001 a cohort of all college students who were certificate, degree-, and transfer-seeking first-time, full-time students were tracked over a three-year period. The completion and transfer rates are based on information submitted by each college to the U.S. Department of Education. Based on the cohort defined above, 36.2 percent of the SWC cohort attained a certificate or degree or became transfer-prepared from Spring 99 to Spring 2003. In addition, 18.1 percent transferred to another postsecondary institution (University of California, California State University, or another California community college) during the same three-year period.

Note that the above rates do not represent the success rates of the entire student population at Southwestern College (SWC), nor do they account for student outcomes occurring after this three-year tracking period. Additionally, the rates do not describe other important features about the College and its students. As one of the top 100 associate degree producers in the nation—and the twelfth highest degree producer for minorities—SWC contributes significantly to the lives of thousands of students in assisting them to meet their educational goals (Community College Week analysis of U.S. Department of Education Data, November 12, 2001).

More information concerning SRTK is available from the Office of Academic Affairs. Additional information can be found at the following Website: srtk.cccco.edu/index.asp.

Title IX and the Violence Against Women Act

Title IX of the Education Amendments Act of 1972 is a federal civil rights law that prohibits sex discrimination in education. The Violence Against Women Act of 1994 (VAWA) is federal legislation that addresses prevention of violence against women, including requirements to offer services for victims of violence and to hold offenders accountable.

In order for the College District to investigate a Title IX complaint, the alleged incident must meet the following conditions:

1. The alleged incident occurred within the US;
2. The individuals involved in the alleged incident must be participating in any educational program or activity controlled by the College District (including buildings or property controlled by recognized student organizations);
3. If the alleged incident took place off-campus, it must have been at a College District sponsored event;
4. The alleged conduct meet the definitions of sexual harassment and/or gender-based harassment under Title IX Final Rule.

Under Title IX, sexual harassment is defined as unwelcome conduct that is based on sex, which must meet ONE of the following conditions:

1. Quid Pro Quo Harassment, a school employee conditions education or employment benefits on an individual's participation in the unwelcome sexual conduct;
2. Hostile Environment Harassment: the unwelcome conduct must be one where a reasonable person determine it is so severe, pervasive, and objectively offensive that it effectively denied a person equal access to the school's employment or education programs;
3. Sexual assault, Dating violence, Domestic violence, or Stalking behavior.

Some examples of behavior that MAY violate Title IX, if found to be severe, pervasive, and objectively offensive, include:

- Sexual comments, sexual jokes, or sexually explicit questions
- Spreading rumors about a person's sexuality or gender identity
- Sending or displaying sexually suggestive content over email, text, or social media
- Requests for sexual favors or pressuring someone for sexual activity
- Unwelcome touching, hugging, stroking, or other physical contact
- Stalking, both in person and online
- Dating or domestic violence
- Attempted or actual sexual violence

Filing a Title IX Complaint

Students can file a Title IX complaint with Janene McIntyre, the Director of Employee Relations and Title IX in the Office of Employee Relations and Title IX, who could be reached at jmccintyre@swccd.edu.

Southwestern College promptly and thoroughly investigates complaints alleging sex discrimination, sexual harassment, and sexual violence. Claims of other unlawful discrimination can be made to Janene McIntyre, the Director of Employee Relations and Title IX in the Office of Employee Relations and Title IX.

Confidential Resources

If a student is seeking strictly confidential support, Personal Wellness Services on the Chula Vista campus is designated as a confidential resource. See the Personal Wellness Services webpage for information on how to make an appointment and for other confidential resources.

Drug and Alcohol Abuse Prevention Program

Southwestern Community College is committed to providing a drug-free environment. The Drug Free Schools and Campuses Regulations (34 CFR, Part 86) of the Drug-Free Schools and Communities Act (DFSCA) requires Institutions of Higher Education (IHE) to provide written information regarding the institution's Alcohol and Other Drugs (AOD) Program. The purpose of this regulation is to inform and assist students concerning the prevention and unlawful possession, use, or distribution of illicit drugs and alcohol on school premises, or as part of any of its activities.

A copy of the District's Drug and Alcohol Abuse Prevention report and additional information is available upon request in the Office of Student Services or on the SWC website under the Office of Student Services webpage.

Equal Employment Opportunity Policy Statement-BP #3420

The Governing Board of the Southwestern Community College District (SCCD) is committed to equal employment opportunity and full recognition of the diversity of cultures, ethnicities, language groups and abilities that are represented in its surrounding communities and student body. The Board believes that diversity in the academic environment fosters cultural awareness, mutual understanding and respect, and suitable role models for all students.

The District shall demonstrate its commitment to the cultural competence of its employees and students through policies, procedures, professional development, services and activities which promote diversity and mutual respect within the District work force and student body. Members of all hiring committees shall have completed Implicit Bias and Equal Employment Opportunity training as prescribed by the Superintendent/President or designee.

The District is an equal opportunity employer that shall provide an educational and work environment in which no person is denied access to, or the benefits of, any program or activity of the District on the basis of federal or state protected classes including, but not limited to: race and/or trait(s) historically associated with race (including, but not limited to hair texture and "protective hairstyles"); color; national origin, ancestry or citizenship status; religion or creed; age; marital status; sex and gender (including pregnancy, childbirth, breastfeeding or related medical condition); sexual orientation; gender identity, gender expression; physical or mental disability; genetic information; medical condition; political activities or affiliations; military or veteran status; status as a victim of domestic violence, assault or stalking; or because one is perceived to have one or more of the foregoing characteristics or associates with a person or group with one or more of these characteristics.

The District shall monitor the success of equal opportunity in its recruitment, selection, retention and promotional policies and procedures by monitoring outcomes to assure no adverse impact against any person or group of individuals, due to race and/or trait(s) historically associated with race (including, but not limited to hair texture and "protective hairstyles"); color; national origin, ancestry or citizenship status; religion or creed; age; marital status; sex and gender (including pregnancy, childbirth, breastfeeding or related medical condition); sexual orientation; gender identity, gender expression; physical or mental disability; genetic information; medical condition; political activities or affiliations; military or veteran status; status as a victim of domestic violence, assault or stalking; or because one is perceived to have one or more of the foregoing characteristics or associates with a person or group with one or more of these characteristics. The District complies with the spirit and law of the Americans with Disabilities Act of 1990 as amended by providing equal opportunity for persons with disabilities. The District shall make reasonable accommodations so that persons of all levels of ability enjoy equal access to all aspects of employment and education in our District, including but not limited to, educational services, selection procedures, retention and promotion. In order to prevent discrimination on the basis of disability, the District will allow an individual with a disability to use a service animal or miniature horse in District facilities and on District campuses in compliance with state and federal law.

The District will not tolerate offensive or abusive conduct or language including jokes, slurs, derogatory comments, or behaviors or language regarding a person's race and/or trait(s) historically associated with race (including, but not limited to hair texture and "protective hairstyles"); color; national origin, ancestry or citizenship status; religion or creed; age; marital status; sex and gender (including pregnancy, childbirth, breastfeeding or related medical condition); sexual orientation; gender identity, gender expression; physical or mental disability; genetic information; medical condition; political activities or affiliations; military or veteran status; status as a victim of domestic violence, assault or stalking; or because one is perceived to have one or more of the foregoing characteristics or associates with a person or group with one or more of these characteristics. This includes District decisions about employment, retention, compensation, promotion, termination and/or other employment status.

1 "Cultural Competence" refers to the skills and ability of individuals to act in a sensitive, inclusive and respectful manner in interactions with persons who are different from themselves.

Approved by SWC Governing Board – October 2020

Add Code	Sect. #	Start Date	End Date	Time	Days	Room	Location	Instructor Name	# of Weeks
----------	---------	------------	----------	------	------	------	----------	-----------------	------------



DISCLAIMER While every reasonable effort is made to ensure that statements in the schedule are accurate, the information contained herein is subject to change or elimination without notice by the administration of the Southwestern Community College District. Students should consult the appropriate campus, campus/district website or department for current information, as well as for any special rules or requirements imposed. Class listing information is as of 04/2021. **Please visit:** www.swccd.edu/WebAdvisor for most current scheduling information.

ACCOUNTING

ACCT 101	PRINCIPLES OF ACCOUNTING I [D; CSU; UC; C-ID ACCT 110]					4 Units	\$2.00
Recommended Preparation: ACCT 7 or MATH 45 or equivalent or through the Southwestern College multiple measures placement processes; RDG 158 or equivalent or through the Southwestern College multiple measures placement processes.							
627745	ACCT	101	501	06/21/21	08/05/21	Online	M. Martinez-Sanabria 7
632617	ACCT	101	502	06/21/21	08/05/21	Online	M. Martinez-Sanabria 7
627746	ACCT	101	503	06/07/21	08/05/21	Online	P. Quintana 9
632618	ACCT	101	504	06/21/21	08/05/21	Online	M. Martinez-Sanabria 7
627747	ACCT	101	505	06/21/21	08/05/21	Online	R. Rubinson 7

ACCT 102	PRINCIPLES OF ACCOUNTING II—MANAGERIAL [D; CSU; UC; C-ID ACCT 120]					4 Units	\$2.00
Prerequisite: ACCT 101 or equivalent. Recommended Preparation: RDG 158 or equivalent or through the Southwestern College multiple measures placement processes.							
627749	ACCT	102	501	06/21/21	08/05/21	Online	E. Arteaga 7
627750	ACCT	102	502	06/21/21	08/05/21	Online	E. Arteaga 7
632619	ACCT	102	503	06/21/21	08/05/21	Online	E. Arteaga 7

ADMINISTRATION OF JUSTICE

AJ 111	INTRODUCTION TO ADMINISTRATION OF JUSTICE [D; CSU; UC; C-ID AJ 110]					3 Units	
Recommended Preparation: RDG 158 or equivalent or through the Southwestern College multiple measures placement processes.							
627765	AJ	111	501	06/07/21	08/05/21	Online	Staff 9
627766	AJ	111	502	06/07/21	08/05/21	Online	Staff 9

AJ 151	CONCEPTS OF CRIMINAL LAW [D; CSU; UC; C-ID AJ 120]					3 Units	\$2.00
Recommended Preparation: AJ 111 or equivalent; RDG 158 or equivalent or through the Southwestern College multiple measures placement processes.							
627767	AJ	151	501	06/07/21	08/05/21	Online	Staff 9

AJ 156	LEGAL ASPECTS OF EVIDENCE [D; CSU; C-ID AJ 124]					3 Units	\$2.00
Recommended Preparation: AJ 110 or equivalent; RDG 158 or equivalent or through the Southwestern College multiple measures placement processes.							
627768	AJ	156	501	06/07/21	08/05/21	Online	Staff 9

AMERICAN SIGN LANGUAGE

ASL 101	AMERICAN SIGN LANGUAGE I [D; CSU; UC]					5 Units	
633380	ASL	101	501	06/07/21	07/15/21	Online	S. Mains 6
633381	ASL	101	502	06/07/21	07/15/21	Online	C. Pedersen 6

ANTHROPOLOGY

ANTH 101	BIOLOGICAL ANTHROPOLOGY [D; CSU; UC; C-ID ANTH 110]					3 Units	
Recommended Preparation: RDG 158 or equivalent or through the Southwestern College multiple measures placement processes.							
633191	ANTH	101	501	06/07/21	08/05/21	Online	E. Browder 9
633192	ANTH	101	502	06/07/21	08/05/21	Online	E. Browder 9

Add Code	Sect. #	Start Date	End Date	Time	Days	Room	Location	Instructor Name	# of Weeks	
ANTH 102	CULTURAL ANTHROPOLOGY [D; CSU; UC; C-ID ANTH 120]						3 Units			
Recommended Preparation: RDG 158 or equivalent or through the Southwestern College multiple measures placement processes.										
627772	ANTH 102 501	06/07/21	08/05/21				Online	M. Jelaca	9	
ANTH 103	ARCHAEOLOGY AND PREHISTORY [D; CSU; UC; C-ID ANTH 150]						3 Units			
Recommended Preparation: RDG 158 or the equivalent skill level as determined by the Southwestern College Reading Assessment or equivalent.										
627773	ANTH 103 501	06/07/21	08/05/21				Online	G. Lawson	9	
ANTH 101L	LABORATORY IN BIOLOGICAL ANTHROPOLOGY [D; CSU; UC; C-ID ANTH 115L]						1 Unit			
Corequisite: ANTH 101 (may be taken previously).										
627771	ANTH 101L 01	06/07/21	08/05/21	7:25-7:50 AM (Lec)	TTh		Remote	Staff	9	
		06/07/21	08/05/21	7:50-9:40 AM (Lab)	TTh		Remote	Staff	9	

ARCHITECTURE

ARCH 151	ARCHITECTURAL DESIGN II [D; CSU; UC]						3 Units			\$20.00
Prerequisite: ARCH 150 or equivalent. Corequisite: ARCH 165 (may be taken previously).										
627774	ARCH 151 01	06/14/21	08/05/21	8:00-8:45 AM (Lec)	MTWTh		Remote	D. Arredondo	8	
		06/14/21	08/05/21	8:55-11:15 AM (Lab)	MTWTh		Remote	D. Arredondo	8	
ARCH 165	ARCHITECTURAL PRACTICE I [D; CSU]						3 Units			\$7.00
Recommended Preparation: RDG 158 or equivalent or through the Southwestern College multiple measures placement processes.										
632616	ARCH 165 501	06/14/21	08/05/21				Online	D. Arredondo	8	
		06/14/21	08/05/21				Online	D. Arredondo	8	

ART

ART 100	DRAWING I [D; CSU; UC; C-ID ARTS 110]						3 Units			\$10.00
Recommended Concurrent Enrollment: ART 101.										
627776	ART 100 02	06/14/21	07/29/21	12:00-1:05 PM (Lec)	MTWTh		Remote	S. Pelah	7	
		06/14/21	07/29/21	1:15-3:35 PM (Lab)	MTWTh		Remote	S. Pelah	7	
627777	ART 100 03	06/14/21	07/29/21	8:00-9:05 AM (Lec)	MTWTh		Remote	M. Rendon Ober	7	
		06/14/21	07/29/21	9:15-11:35 AM (Lab)	MTWTh		Remote	M. Rendon Ober	7	
627778	ART 100 60	06/21/21	08/05/21	6:10-7:15 PM (Lec)	MTWTh		Remote	D. Weiler	7	
		06/21/21	08/05/21	7:25-9:45 PM (Lab)	MTWTh		Remote	D. Weiler	7	
ART 101	DESIGN I [D; CSU; UC; C-ID ARTS 100]						3 Units			\$10.00
627779	ART 101 01	06/14/21	07/29/21	8:00-9:05 AM (Lec)	MTWTh		Remote	E. Behling	7	
		06/14/21	07/29/21	9:15-11:35 AM (Lab)	MTWTh		Remote	E. Behling	7	



Did you know Southwestern College has a **FREE Drive-Up Wifi Zone**?

The FREE Drive-Up Wifi Zone is available for students who do not have access to the internet and is located right by the College Police Building (Parking Lot D). A Southwestern College ID on the student's car dashboard is needed for verification OR a printed copy of the student's registration statement or class schedule.

For more information visit: www.swccd.edu/administration/institutional-technology/network-and-infrastructure

Add Code	Sect. #	Start Date	End Date	Time	Days	Room	Location	Instructor Name	# of Weeks	
ART 104	INTRODUCTION TO ART [D; CSU; UC]						3 Units			
627780	ART 104 03	06/14/21	07/29/21	12:00-1:50 PM (Lec)	MTWTh		Remote	C. West	7	
627786	ART 104 70	06/07/21	08/05/21	9:00-11:50 AM (Lec)	MW		Remote	J. Dillemath	9	
627781	ART 104 501	06/14/21	08/05/21				Online	L. Puffer	8	
627782	ART 104 502	06/07/21	07/29/21				Online	C. Moore	8	
627783	ART 104 503	06/07/21	08/05/21				Online	E. Park	9	
627784	ART 104 504	06/14/21	08/05/21				Online	M. Morris	8	
627785	ART 104 505	06/21/21	08/05/21				Online	J. Carrubba	7	
632549	ART 104 581	06/07/21	07/08/21				Online	J. Lewis	5	
633394	ART 104 CB01	06/07/21	07/01/21	8:50-12:00 PM (Lec)	MTWTh		Remote	H. Lee	4	

This is a California College and Career Access Pathways (CCAP) - course, only open to High School students. If you are a High School student and would like to take this course, please contact your High School Counselor. For more information, please email the Outreach Department at outreach@swccd.edu.

ART 107	PAINTING I [D; CSU; UC; C-ID ARTS 210]						3 Units		\$20.00	
Recommended Preparation: ART 100 and 101, or equivalent.										
627789	ART 107 01	06/14/21	07/29/21	8:00-9:05 AM (Lec)	MTWTh		Remote	S. Gonzalez	7	
		06/14/21	07/29/21	9:15-11:35 AM (Lab)	MTWTh		Remote	S. Gonzalez	7	

ART 108	PAINTING II [D; CSU; UC]						3 Units		\$20.00	
Prerequisite: ART 107 or equivalent. Recommended Preparation: ART 100 and 101 or equivalent. Recommended Concurrent Enrollment: ART 108L.										
627790	ART 108 01	06/14/21	07/29/21	8:00-9:05 AM (Lec)	MTWTh		Remote	S. Gonzalez	7	
		06/14/21	07/29/21	9:15-11:35 AM (Lab)	MTWTh		Remote	S. Gonzalez	7	

ART 150	ART HISTORY SURVEY—STONE AGE TO THE AGES OF FAITH [D; CSU; UC; C-ID ARTH 110]						3 Units			
Recommended Preparation: RDG 158 or equivalent or through the Southwestern College multiple measures placement processes.										
627791	ART 150 501	06/14/21	08/05/21				Online	L. Hoeger	8	
627792	ART 150 502	06/14/21	08/05/21				Online	C. De Pierola-Foerster	8	

ART 151	ART HISTORY-RENAISSANCE TO CONTEMPORARY [D; CSU; UC]						3 Units			
Recommended Preparation: RDG 158 or equivalent or through the Southwestern College multiple measures placement processes.										
627793	ART 151 60	06/21/21	08/05/21	5:30-7:50 PM (Lec)	TWTh		Remote	T. Nikiforuk	7	

ART 192	INTRODUCTION TO DIGITAL IMAGING [D; CSU; UC; C-ID ARTS 250]						3 Units		\$15.00	
Recommended Concurrent Enrollment: ART 192L.										
627794	ART 192 01	06/14/21	07/29/21	8:00-9:05 AM (Lec)	MTWTh		Remote	J. Sutton Hough	7	
		06/14/21	07/29/21	9:15-11:35 AM (Lab)	MTWTh		Remote	J. Sutton Hough	7	

ASSOCIATE DEGREE IN NURSING

ADN 106	DOSAGE CALCULATIONS FOR NURSES [D; CSU]						2 Units			
627752	ADN 106 301	06/15/21	07/29/21	9:00-11:15 AM (Lec)	TTh		Remote	Staff	7	
632603	ADN 106 360	06/15/21	07/29/21	9:00-11:15 AM (Lec)	TTh		Remote	Staff	7	

ADN 116	ADN PRACTICUM [D; CSU]						2 Units			
Prerequisite: ADN 112L and ADN 113L or equivalent.										
627756	ADN 116 E1	06/07/21	07/23/21	TBA			Remote	Staff	8	
627757	ADN 116 E2	06/07/21	07/23/21	TBA			Remote	Staff	8	
633362	ADN 116 E3	06/07/21	07/23/21	TBA			Remote	Staff	8	
<i>A total of 108 hours of laboratory to be completed - TBA.</i>										
633365	ADN 116 E4	06/07/21	07/23/21	TBA			Remote	Staff	8	
633366	ADN 116 E5	06/07/21	07/23/21	TBA			Remote	Staff	8	
633367	ADN 116 E6	06/07/21	07/23/21	TBA			Remote	Staff	8	
633368	ADN 116 E7	06/07/21	07/23/21	TBA			Remote	Staff	8	
633369	ADN 116 E8	06/07/21	07/23/21	TBA			Remote	Staff	8	
633370	ADN 116 E9	06/07/21	07/23/21	TBA			Remote	Staff	8	

ADN 117	ADVANCED CRITICAL THINKING IN NURSING [D; CSU]						1 Unit			
Limitation on Enrollment: Currently enrolled in nursing program (VN or ADN).										
632605	ADN 117 301	06/14/21	06/28/21	10:00-1:20 PM (Lec)	MT		Remote	Staff	3	

Add Code	Sect. #	Start Date	End Date	Time	Days	Room	Location	Instructor Name	# of Weeks	
ADN 150	PHYSICAL ASSESSMENT [D; CSU]						2 Units			
Limitation on Enrollment: Registered nurses or student nurses.										
633371	ADN 150 301	07/26/21	07/29/21	8:00-4:30 PM (Lec)	MTWTh		Remote	Staff	1	
627758	ADN 150 302	08/02/21	08/05/21	8:00-4:30 PM (Lec)	MTWTh		Remote	Staff	1	
ADN 290	ASSOCIATE DEGREE NURSING WORK EXPERIENCE I [D; CSU]						4 Units			
Limitation on Enrollment: Declared Associate Degree Nursing major. Recommended Concurrent Enrollment: Enrollment in one other class directly related to the Associate Degree Nursing major in order to apply learned theory in a practical hands-on setting through an internship class.										
627759	ADN 290 360	06/07/21	08/05/21	TBA			Remote	Staff	9	
<i>Time of class is To Be Arranged. Meetings/consultations with instructor required. Please contact instructor for more information.</i>										
ADN 291	ASSOCIATE DEGREE NURSING WORK EXPERIENCE II [D; CSU]						4 Units			
Prerequisite: ADN 290 or equivalent. Limitation on Enrollment: Declared Associate Degree Nursing major. Recommended Concurrent Enrollment: Enrollment in one other class directly related to the Associate Degree Nursing major in order to apply learned theory in a practical hands-on setting through an internship class.										
627761	ADN 291 360	06/07/21	08/05/21	TBA			Remote	Staff	9	
<i>Time of class is To Be Arranged. Meetings/consultations with instructor required. Please contact instructor for more information.</i>										
ADN 292	ASSOCIATE DEGREE NURSING WORK EXPERIENCE III [D; CSU]						4 Units			
Prerequisite: ADN 291 or equivalent. Limitation on Enrollment: Declared Associate Degree Nursing major. Recommended Concurrent Enrollment: Enrollment in one other class directly related to the Associate Degree Nursing major in order to apply learned theory in a practical hands-on setting through an internship class.										
627763	ADN 292 360	06/07/21	08/05/21	TBA			Remote	Staff	9	
<i>Time of class is To Be Arranged. Meetings/consultations with instructor required. Please contact instructor for more information.</i>										
ADN 290A	ASSOCIATE DEGREE NURSING WORK EXPERIENCE I [D; CSU]						1 Unit			
Recommended Concurrent Enrollment: ADN 290 or the equivalent skill level as determined by the Southwestern College Assessment or equivalent.										
627760	ADN 290A 360	06/07/21	08/05/21	4:30-6:20 PM (Lec)	T		Remote	Staff	9	
ADN 291A	ASSOCIATE DEGREE NURSING WORK EXPERIENCE II [D; CSU]						1 Unit			
Recommended Concurrent Enrollment: ADN 291 or the equivalent skill level as determined by the Southwestern College Assessment or equivalent.										
627762	ADN 291A 360	06/07/21	08/05/21	4:30-6:20 PM (Lec)	T		Remote	Staff	9	
ADN 292A	ASSOCIATE DEGREE NURSING WORK EXPERIENCE III [D; CSU]						1 Unit			
Recommended Concurrent Enrollment: ADN 292 or the equivalent skill level as determined by the Southwestern College Assessment or equivalent.										
627764	ADN 292A 360	06/07/21	08/05/21	4:30-6:20 PM (Lec)	T		Remote	Staff	9	

ASTRONOMY

ASTR 100	PRINCIPLES OF ASTRONOMY [D; CSU; UC]						3 Units			
Recommended Preparation: MATH 45 or MATH 48 or equivalent or through the Southwestern College multiple measures placement processes; RDG 158 or equivalent or through the Southwestern College multiple measures placement processes.										
627802	ASTR 100 03	06/14/21	08/05/21	2:00-4:05 PM (Lec)	MTTh		Remote	Staff	8	
ASTR 109	ASTRONOMY LABORATORY [D; CSU; UC]						1 Unit			
Corequisite: ASTR 100, ASTR 120, ASTR 150, ASTR 170, ASTR 180 or ASTR 205 (may be taken previously). Recommended Preparation: MATH 45 or MATH 48 or equivalent or through the Southwestern College multiple measures placement processes.										
627803	ASTR 109 01	06/14/21	08/05/21	4:30-6:35 PM (Lab)	MTTh		Remote	S. Rao Sudhakar	8	

AUTOMOTIVE TECHNOLOGY

AT 101	INTRODUCTION TO BASIC AUTOMOTIVE SERVICE [D; CSU]						3 Units		\$13.00
633529	AT 101 502	06/14/21	08/05/21				Online	Staff	9
		06/14/21	08/05/21				Online	Staff	9
632598	AT 101 530	06/14/21	08/05/21				Online	R. Tapia	8
		06/14/21	08/05/21				Online	R. Tapia	8

Add Code	Sect. #	Start Date	End Date	Time	Days	Room	Location	Instructor Name	# of Weeks
----------	---------	------------	----------	------	------	------	----------	-----------------	------------

BIOLOGY

BIOL 100 PRINCIPLES OF BIOLOGY [D; CSU; UC] 3 Units
 Corequisite: BIOL 101. Recommended Preparation: ENGL 115 or the equivalent; RDG 158 or equivalent or through the Southwestern College multiple measures placement processes.

627810	BIOL	100	63	06/07/21	08/05/21	5:30-8:20 PM (Lec)	MW	Remote	S. Griffith-Jackson	9
627811	BIOL	100	64	06/07/21	08/05/21	5:30-8:20 PM (Lec)	TTh	Remote	S. Griffith-Jackson	9
627812	BIOL	100	70	06/07/21	08/05/21	7:30-8:45 AM (Lec)	MTWTh	Remote	G. Gomez	9
627813	BIOL	100	71	06/07/21	08/05/21	12:00-1:15 PM (Lec)	MTWTh	Remote	A. Kacsinta	9
627814	BIOL	100	80	06/14/21	07/29/21	9:00-12:30 PM (Lec)	TTh	Remote	S. Mohseni Nodehi	7
627805	BIOL	100	301	06/07/21	08/05/21	10:00-11:50 AM (Lec)	MTW	Remote	S. Young	9
627806	BIOL	100	501	06/07/21	08/05/21			Online	H. McMullen	9
627807	BIOL	100	502	06/07/21	08/05/21			Online	T. Norquist	9
627808	BIOL	100	503	06/07/21	08/05/21			Online	S. Griffith-Jackson	9

BIOL 101 PRINCIPLES OF BIOLOGY LABORATORY [D; CSU; UC] 1 Unit
 Corequisite: BIOL 100. Recommended Preparation: ENGL 115 or equivalent; RDG 158 or equivalent or through the Southwestern College multiple measures placement processes.

627815	BIOL	101	01	06/07/21	08/05/21	7:25-10:15 AM (Lab)	MW	Remote	H. Valtierra	9
627816	BIOL	101	02	06/07/21	08/05/21	7:25-10:15 AM (Lab)	TTh	Remote	H. Valtierra	9
627817	BIOL	101	04	06/07/21	08/05/21	10:30-1:20 PM (Lab)	TTh	Remote	A. Samson	9
627818	BIOL	101	05	06/07/21	08/05/21	10:30-1:20 PM (Lab)	MW	Remote	A. Samson	9
627819	BIOL	101	07	06/07/21	08/05/21	1:30-4:20 PM (Lab)	TTh	Remote	H. Higa	9
627820	BIOL	101	08	06/07/21	08/05/21	1:30-4:20 PM (Lab)	MW	Remote	J. Jackson	9
627822	BIOL	101	62	06/07/21	08/05/21	5:30-8:20 PM (Lab)	TTh	Remote	J. Jackson	9
627823	BIOL	101	63	06/07/21	08/05/21	6:00-8:50 PM (Lab)	MW	Remote	J. Jackson	9
627824	BIOL	101	70	06/07/21	08/05/21	9:00-11:50 AM (Lab)	MW	Remote	H. Higa	9
627825	BIOL	101	71	06/07/21	08/05/21	2:00-4:50 PM (Lab)	MW	Remote	M. Eckles	9
627826	BIOL	101	72	06/07/21	08/05/21	9:00-11:50 AM (Lab)	TTh	Remote	H. Higa	9
627821	BIOL	101	301	06/07/21	08/05/21	12:30-3:20 PM (Lab)	MW	Remote	H. Valtierra	9

BIOL 185 BIOLOGY OF ALCOHOL AND OTHER DRUGS [D; CSU; UC] 3 Units
 Recommended Preparation: ENGL 115 or equivalent; RDG 158 or equivalent or through the Southwestern College multiple measures placement processes.

627830	BIOL	185	01	06/07/21	08/05/21	1:30-4:20 PM (Lec)	TTh	Remote	L. Ornelas	9
627831	BIOL	185	80	06/14/21	07/29/21	8:15-12:05 PM (Lec)	MW	Remote	L. Ornelas	7
632552	BIOL	185	81	06/14/21	07/29/21	8:15-12:05 PM (Lec)	MW	Remote	C. Winston	7
632553	BIOL	185	82	06/14/21	07/29/21	1:30-5:00 PM (Lec)	TTh	Remote	C. Winston	7

BIOL 190 HUMAN ANATOMY AND PHYSIOLOGY [D; CSU; UC] 4 Units
 Recommended Preparation: ENGL 115 or equivalent; RDG 158 or equivalent or through the Southwestern College multiple measures placement processes; MATH 45 or equivalent or through the Southwestern College multiple measures placement processes.

627832	BIOL	190	301	06/07/21	08/05/21	8:00-9:50 AM (Lec)	TWTh	Remote	Staff	9
				06/07/21	08/05/21	10:10-12:00 PM (Lab)	TWTh	Remote	Staff	9

BIOL 215 BIostatistics [D; CSU; UC] 3 Units
 Prerequisite: MATH 122 or MATH 244 or equivalent; BIOL 210 or BIOL 211, or equivalent.

632604	BIOL	215	01	06/07/21	08/05/21	10:30-11:20 AM (Lec)	MTWTh	Remote	Staff	9
				06/07/21	08/05/21	11:30-2:20 PM (Lab)	MW	Remote	Staff	9

BIOL 260 HUMAN ANATOMY [D; CSU; UC; C-ID BIOL 110B] 4 Units
 Prerequisite: BIOL 100 and 101, or equivalent. Recommended Preparation: ENGL 115 or equivalent; RDG 158 or equivalent or through the Southwestern College multiple measures placement processes.

627833	BIOL	260	01	06/07/21	08/05/21	10:30-11:20 AM (Lec)	MTWTh	Remote	Staff	9
				06/07/21	08/05/21	11:30-2:20 PM (Lab)	MTWTh	Remote	Staff	9
627834	BIOL	260	03	06/07/21	08/05/21	4:00-4:50 PM (Lec)	MTWTh	Remote	Staff	9
				06/07/21	08/05/21	5:00-7:50 PM (Lab)	MTWTh	Remote	Staff	9
627835	BIOL	260	70	06/07/21	08/05/21	7:30-8:20 AM (Lec)	MTWTh	Remote	Staff	9
				06/07/21	08/05/21	8:30-11:20 AM (Lab)	MTWTh	Remote	Staff	9
627836	BIOL	260	71	06/07/21	08/05/21	12:00-12:50 PM (Lec)	MTWTh	Remote	Staff	9
				06/07/21	08/05/21	1:00-3:50 PM (Lab)	MTWTh	Remote	Staff	9
627837	BIOL	260	76	06/07/21	08/05/21	5:00-5:50 PM (Lec)	MTWTh	Remote	Staff	9
				06/07/21	08/05/21	6:00-8:50 PM (Lab)	MTWTh	Remote	Staff	9

Add Code	Sect. #	Start Date	End Date	Time	Days	Room	Location	Instructor Name	# of Weeks	
BIOL 261	PRINCIPLES OF HUMAN PHYSIOLOGY [D; CSU; UC; C-ID BIOL 120B]						4 Units			
Prerequisite: CHEM 100 or CHEM 102 or CHEM 170 or equivalent; BIOL 260 or equivalent. Recommended Preparation: ENGL 115 or equivalent; RDG 158 or equivalent or through the Southwestern College multiple measures placement processes.										
627838	BIOL	261	01	06/07/21	08/05/21	10:30-1:20 PM (Lec)	MW	Remote	Staff	9
				06/07/21	08/05/21	10:30-1:20 PM (Lab)	TTh	Remote	Staff	9
627839	BIOL	261	02	06/07/21	08/05/21	2:00-4:50 PM (Lec)	MW	Remote	Staff	9
				06/07/21	08/05/21	2:00-4:50 PM (Lab)	TTh	Remote	Staff	9
627840	BIOL	261	70	06/07/21	08/05/21	8:00-9:15 AM (Lec)	MTWTh	Remote	Staff	9
				06/07/21	08/05/21	9:25-12:15 PM (Lab)	MW	Remote	Staff	9
627841	BIOL	261	71	06/07/21	08/05/21	1:05-2:20 PM (Lec)	MTWTh	Remote	Staff	9
				06/07/21	08/05/21	9:45-12:35 PM (Lab)	TTh	Remote	Staff	9

BIOL 265	GENERAL MICROBIOLOGY [D; CSU; UC]						4 Units			
Prerequisite: BIOL 100 and BIOL 101, or equivalent; CHEM 100 or CHEM 102 or CHEM 170 or equivalent. Recommended Preparation: ENGL 115 or equivalent; RDG 158 or equivalent or through the Southwestern College multiple measures placement processes.										
627842	BIOL	265	01	06/07/21	08/05/21	9:00-9:50 AM (Lec)	MTWTh	Remote	Staff	9
				06/07/21	08/05/21	10:00-12:50 PM (Lab)	MTWTh	Remote	Staff	9
627843	BIOL	265	03	06/07/21	08/05/21	4:00-4:50 PM (Lec)	MTWTh	Remote	Staff	9
				06/07/21	08/05/21	5:00-7:50 PM (Lab)	MTWTh	Remote	Staff	9
627844	BIOL	265	70	06/07/21	08/05/21	9:00-9:50 AM (Lec)	MTWTh	Remote	Staff	9
				06/07/21	08/05/21	10:00-12:50 PM (Lab)	MTWTh	Remote	Staff	9
627845	BIOL	265	71	06/07/21	08/05/21	2:00-2:50 PM (Lec)	MTWTh	Remote	Staff	9
				06/07/21	08/05/21	3:00-5:50 PM (Lab)	MTWTh	Remote	Staff	9

BUSINESS

BUS 120	INTRODUCTION TO BUSINESS [D; CSU; UC]						3 Units			
627846	BUS	120	501	06/07/21	08/05/21			Online	S. Duver	9
627847	BUS	120	502	06/07/21	08/05/21			Online	Stockin	9

BUS 121	FINANCIAL PLANNING AND MONEY MANAGEMENT [D; CSU]						3 Units			
627848	BUS	121	501	06/07/21	08/05/21			Online	K. Alston	9
627849	BUS	121	502	06/07/21	08/05/21			Online	K. Alston	9

BUS 136	WORKPLACE PRINCIPLES AND ETHICS [D; CSU]						1 Unit			
627850	BUS	136	501	06/07/21	08/05/21			Online	Staff	9

BUS 140	BUSINESS LAW/THE LEGAL ENVIRONMENT OF BUSINESS [D; CSU; UC; C-ID BUS 125]						3 Units			
627851	BUS	140	501	06/21/21	08/05/21			Online	E. Shapiro	7
627852	BUS	140	502	06/21/21	08/05/21			Online	E. Shapiro	7
627853	BUS	140	503	06/21/21	08/05/21			Online	E. Shapiro	7

BUS 150	PRINCIPLES OF MANAGEMENT [D; CSU]						3 Units			
Recommended Preparation: ACCT 101 or equivalent; RDG 158 or the equivalent skill level as determined by the Southwestern College Reading Assessment or equivalent.										
627854	BUS	150	501	06/07/21	08/05/21			Online	S. Duver	9
627855	BUS	150	502	06/07/21	08/05/21			Online	Staff	9

BUS 211	COMMUNICATION IN BUSINESS AND INDUSTRY [D; CSU]						3 Units			
Prerequisite: BUS 210 or equivalent or through the Southwestern College multiple measures placement processes.										
627856	BUS	211	501	06/07/21	07/15/21			Online	L. Soler-McElwain	6
627857	BUS	211	502	06/07/21	07/15/21			Online	L. Soler-McElwain	6

BUS 212	BUSINESS COMMUNICATION						3 Units			
632615	BUS	212	501	06/07/21	07/29/21			Online	S. Duver	8
632554	BUS	212	580	06/14/21	07/29/21			Online	S. Duver	7

Add Code	Sect. #	Start Date	End Date	Time	Days	Room	Location	Instructor Name	# of Weeks	
BUS 218		PROCEDURES FOR OFFICE PROFESSIONALS [D; CSU]					4 Units		\$2.00	
Recommended Preparation: BUS 71 and CIS 92, or equivalent.										
627859	BUS 218 501	06/07/21	07/15/21				Online	L. Soler-McElwain	6	
		06/07/21	07/15/21				Online	L. Soler-McElwain	6	
632544	BUS 218 580	06/14/21	07/29/21				Online	A. Rodriguez	7	
		06/14/21	07/29/21				Online	A. Rodriguez	7	
BUS 226		INTERPRETATION AND TRANSLATION: LEGAL [D; CSU]					3 Units			
Recommended Preparation: SPAN 215 or equivalent.										
627861	BUS 226 501	06/07/21	07/15/21				Online	L. Soler-McElwain	6	
BUS 290		WORK EXPERIENCE IN BUSINESS I [D; CSU]					4 Units			
Limitation on Enrollment: Declared Business major. Recommended Concurrent Enrollment: BUS 136; Enrollment in one other class directly related to the Business major in order to apply learned theory in a practical hands-on setting through an internship class.										
627862	BUS 290 60	06/07/21	08/05/21	TBA			Remote	M. Peinado	9	
<i>NOTE: A Work Experience Orientation will take place Tuesday, June 8, 2021, 5:15-6:15 pm via Zoom. The Orientation link is available in Canvas to registered students. A work experience placement is required. Contact Student Employment Services for listings, ses@swccd.edu. Contact instructor for additional course information.</i>										
BUS 291		WORK EXPERIENCE IN BUSINESS II [D; CSU]					4 Units			
Prerequisite: BUS 290 or equivalent. Limitation on Enrollment: Declared Business major. Recommended Concurrent Enrollment: Enrollment in one other class directly related to the Business major in order to apply learned theory in a practical hands-on setting through an internship class.										
627863	BUS 291 60	06/07/21	08/05/21	TBA			Remote	M. Peinado	9	
<i>NOTE: A Work Experience Orientation will take place Tuesday, June 8, 2021, 5:15-6:15 pm via Zoom. The Orientation link is available in Canvas to registered students. A work experience placement is required. Contact Student Employment Services for listings, ses@swccd.edu. Contact instructor for additional course information.</i>										
BUS 292		WORK EXPERIENCE IN BUSINESS III [D; CSU]					4 Units			
Prerequisite: BUS 291 or equivalent. Limitation on Enrollment: Declared Business major. Recommended Concurrent Enrollment: Enrollment in one other class directly related to the Business major in order to apply learned theory in a practical hands-on setting through an internship class.										
627864	BUS 292 60	06/07/21	08/05/21	TBA			Remote	M. Peinado	9	
<i>NOTE: A Work Experience Orientation will take place Tuesday, June 8, 2021, 5:15-6:15 pm via Zoom. The Orientation link is available in Canvas to registered students. A work experience placement is required. Contact Student Employment Services for listings, ses@swccd.edu. Contact instructor for additional course information.</i>										
BUS 293		WORK EXPERIENCE IN BUSINESS IV [D; CSU]					4 Units			
Prerequisite: BUS 292 or equivalent. Limitation on Enrollment: Declared Business major. Recommended Concurrent Enrollment: Enrollment in one other class directly related to the Business major in order to apply learned theory in a practical hands-on setting through an internship class.										
627865	BUS 293 60	06/07/21	08/05/21	TBA			Remote	M. Peinado	9	
<i>NOTE: A Work Experience Orientation will take place Tuesday, June 8, 2021, 5:15-6:15 pm via Zoom. The Orientation link is available in Canvas to registered students. A work experience placement is required. Contact Student Employment Services for listings, ses@swccd.edu. Contact instructor for additional course information.</i>										

CERTIFIED NURSING ASSISTANT

CNA 20		CERTIFIED NURSING ASSISTANT (CNA) [ND]					5.5 Units			
Corequisite: CNA 20L. Recommended Preparation: RDG 56 or equivalent or through the Southwestern College multiple measures placement processes.										
627914	CNA 20 301	06/07/21	08/05/21	TBA			Remote	Staff	9	
CNA 20L		CERTIFIED NURSING ASSISTANT LAB [ND]					3 Units		\$15.00	
Corequisite: CNA 20.										
627915	CNA 20L E1	06/07/21	08/05/21	TBA			Remote	Staff	9	
<i>18 hours to be scheduled per week OR 162 total hours to be scheduled.</i>										
627916	CNA 20L E2	06/07/21	08/05/21	TBA			Remote	Staff	9	
<i>18 hours to be scheduled per week OR 162 total hours to be scheduled.</i>										
627917	CNA 20L E3	06/07/21	08/05/21	TBA			Remote	Staff	9	
<i>18 hours to be scheduled per week OR 162 total hours to be scheduled.</i>										
627918	CNA 20L E4	06/07/21	08/05/21	TBA			Remote	Staff	9	
<i>18 hours to be scheduled per week OR 162 total hours to be scheduled.</i>										

Add Code	Sect. #	Start Date	End Date	Time	Days	Room	Location	Instructor Name	# of Weeks
----------	---------	------------	----------	------	------	------	----------	-----------------	------------

CHEMISTRY

CHEM 100 INTRODUCTION TO GENERAL CHEMISTRY [D; CSU; UC; C-ID CHEM 101] 4 Units

Prerequisite: MATH 45 or MATH 48 or equivalent or through the Southwestern College multiple measures placement processes. Recommended Preparation: RDG 56 or equivalent or through the Southwestern College multiple measures placement processes.

627891	CHEM	100	70	06/14/21	08/05/21	8:35-11:55 AM (Lab)	MW	Remote	Staff	8
				06/14/21	08/05/21	7:00-8:25 AM (Lec)	MTWTh	Remote	Staff	8
627892	CHEM	100	71	06/14/21	08/05/21	8:35-11:45 AM (Lab)	TTh	Remote	C. Valder	8
				06/14/21	08/05/21	7:00-8:25 AM (Lec)	MTWTh	Remote	C. Valder	8
627893	CHEM	100	72	06/14/21	08/05/21	12:25-3:45 PM (Lab)	MW	Remote	Staff	8
				06/14/21	08/05/21	10:50-12:15 PM (Lec)	MTWTh	Remote	Staff	8
627894	CHEM	100	73	06/14/21	08/05/21	12:25-3:45 PM (Lab)	TTh	Remote	T. Khuong	8
				06/14/21	08/05/21	10:50-12:15 PM (Lec)	MTWTh	Remote	T. Khuong	8
627887	CHEM	100	301	06/07/21	08/05/21	8:00-9:15 AM (Lec)	MTWTh	Remote	Staff	9
				06/07/21	08/05/21	9:45-12:35 PM (Lab)	MW	Remote	Staff	9
627888	CHEM	100	302	06/07/21	08/05/21	8:00-9:15 AM (Lec)	MTWTh	Remote	C. Contreras	9
				06/07/21	08/05/21	9:45-12:35 PM (Lab)	TTh	Remote	C. Contreras	9
627889	CHEM	100	360	06/07/21	08/05/21	4:15-5:30 PM (Lec)	MTWTh	Remote	Staff	9
				06/07/21	08/05/21	5:50-8:40 PM (Lab)	MW	Remote	Staff	9
627890	CHEM	100	361	06/07/21	08/05/21	4:15-5:30 PM (Lec)	MTWTh	Remote	D. Gergens	9
				06/07/21	08/05/21	5:50-8:40 PM (Lab)	TTh	Remote	D. Gergens	9

CHEM 170 PREPARATION FOR GENERAL CHEMISTRY [D; CSU; UC] 4 Units

Prerequisite: MATH 62 or MATH 72 or equivalent or through the Southwestern College multiple measures placement processes. Recommended Preparation: RDG 158 or equivalent or through the Southwestern College multiple measures placement processes.

627895	CHEM	170	01	06/14/21	08/05/21	10:00-11:25 AM (Lec)	MTWTh	Remote	Staff	8
				06/14/21	08/05/21	12:00-3:10 PM (Lab)	TTh	Remote	Staff	8
627896	CHEM	170	03	06/14/21	08/05/21	10:00-11:25 AM (Lec)	MTWTh	Remote	M. Maya-Peinl	8
				06/14/21	08/05/21	12:00-3:20 PM (Lab)	MW	Remote	M. Maya-Peinl	8
627897	CHEM	170	05	06/14/21	08/05/21	11:35-1:00 PM (Lec)	MTWTh	Remote	Staff	8
				06/14/21	08/05/21	8:00-11:10 AM (Lab)	TTh	Remote	Staff	8
627898	CHEM	170	07	06/14/21	08/05/21	11:35-1:00 PM (Lec)	MTWTh	Remote	J. Latzer	8
				06/14/21	08/05/21	8:00-11:20 AM (Lab)	MW	Remote	J. Latzer	8

CHEM 200 GENERAL CHEMISTRY I 5 Units

Prerequisite: CHEM 170 or equivalent; MATH 62 or MATH 72 or equivalent or through the Southwestern College multiple measures placement processes. Recommended Preparation: MATH 101 or MATH 121 or MATH 244 or equivalent; RDG 158 or equivalent or through the Southwestern College multiple measures placement processes.

627899	CHEM	200	01	06/14/21	08/05/21	8:00-9:25 AM (Lec)	MTWTh	Remote	Staff	8
				06/14/21	08/05/21	9:35-12:50 PM (Lab)	MTWTh	Remote	Staff	8
627900	CHEM	200	03	06/14/21	08/05/21	1:10-4:25 PM (Lab)	MTWTh	Remote	Staff	8
				06/14/21	08/05/21	11:00-12:25 PM (Lec)	MTWTh	Remote	Staff	8

CHILD DEVELOPMENT (See Family Studies)

COMMUNICATION

COMM 103 ORAL COMMUNICATION [D; CSU; UC; C-ID COMM 180] 3 Units

Recommended Preparation: RDG 158 or the equivalent skill level as determined by the Southwestern College Reading Assessment or equivalent.

627921	COMM	103	03	06/14/21	07/29/21	8:00-11:50 AM (Lec)	MW	Remote	D. Biggers	7
627927	COMM	103	21	06/14/21	07/29/21	10:30-12:20 PM (Lec)	MTWTh	Remote	A. Johnson	7
627932	COMM	103	80	06/07/21	07/08/21	11:15-1:45 PM (Lec)	MTWTh	Remote	G. Robertson	5
632558	COMM	103	501	06/14/21	07/29/21			Online	S. Cureton	7
632559	COMM	103	502	06/14/21	07/29/21			Online	R. Wash	7
632560	COMM	103	504	06/14/21	07/29/21			Online	B. Manning	7
632561	COMM	103	505	06/14/21	07/29/21			Online	B. O'Donnell	7
632562	COMM	103	511	06/14/21	07/29/21			Online	L. Houde	7
632563	COMM	103	512	06/14/21	07/29/21			Online	M. Rancourt	7

Add Code	Sec. #	Start Date	End Date	Time	Days	Room	Location	Instructor Name	# of Weeks
632565	COMM 103 561	06/14/21	07/29/21				Online	R. Wash	7
632486	COMM 103 570	06/07/21	08/05/21				Online	J. Peralta	9
632487	COMM 103 571	06/21/21	08/05/21				Online	P. Maxwell	7

COMM 104 PUBLIC SPEAKING [D; CSU; UC; C-ID COMM 110] 3 Units
 Recommended Preparation: RDG 158 or equivalent or through the Southwestern College multiple measures placement processes.

627934	COMM 104 02	06/14/21	07/29/21	10:30-12:20 PM (Lec)	MTWTh		Remote	J. Mills	7
--------	-------------	----------	----------	----------------------	-------	--	--------	----------	---

COMM 160 ARGUMENTATION AND DEBATE [D; CSU; UC; C-ID COMM 120] 3 Units

632566	COMM 160 501	06/14/21	07/29/21				Online	E. Maag	7
--------	--------------	----------	----------	--	--	--	--------	---------	---

COMM 174 INTERPERSONAL COMMUNICATION [D; CSU; UC; C-ID COMM 130] 3 Units
 Recommended Preparation: RDG 158 or equivalent or through the Southwestern College multiple measures placement processes.

627937	COMM 174 04	06/14/21	07/29/21	8:25-10:15 AM (Lec)	MTWTh		Remote	C. Taffolla-Schreiber	7
627940	COMM 174 60	06/14/21	07/29/21	5:00-8:35 PM (Lec)	TTh		Remote	M. Sanguinet	7
632567	COMM 174 503	06/14/21	07/29/21				Online	R. Nead	7
632568	COMM 174 506	06/14/21	07/29/21				Online	L. Labio	7
632564	COMM 174 521	06/14/21	07/29/21				Online	L. Labio	7

This section is part of the Summer Readiness Program (SRP), an EOPS summer program that equips incoming first year students with the skills to be successful throughout their college experience. For more information contact Ronnie Hands at rhands@swccd.edu or (619) 431-6700 x6456.

632488	COMM 174 570	06/21/21	08/05/21				Online	M. Law II	7
632504	COMM 174 571	06/21/21	08/05/21				Online	M. Law II	7

COMM 176 INTERCULTURAL COMMUNICATION [D; CSU; UC; C-ID COMM 150] 3 Units
 Recommended Preparation: RDG 158 or equivalent or through the Southwestern College multiple measures placement processes.

632569	COMM 176 521	06/14/21	07/29/21				Online	R. Nead	7
--------	--------------	----------	----------	--	--	--	--------	---------	---

COMM 200 INTRODUCTION TO MASS COMMUNICATION AND SOCIETY [D; CSU; UC; C-ID JOUR 100] 3 Units

627943	COMM 200 01	06/07/21	07/01/21	9:00-12:10 PM (Lec)	MTWTh		Remote	M. Branscomb II	4
--------	-------------	----------	----------	---------------------	-------	--	--------	-----------------	---

COMPUTER AIDED DESIGN

CAD 220 INTRO TO CAD/CAM SYSTEMS [D; CSU; UC] 3 Units \$2.00
 Recommended Preparation: RDG 158 or equivalent or through the Southwestern College multiple measures placement processes.

632593	CAD 220 580	06/07/21	07/29/21				Online	Staff	8
		06/07/21	07/29/21				Online	Staff	8

COMPUTER INFORMATION SYSTEMS

CIS 101 INTRODUCTION TO BUSINESS INFORMATION SYSTEMS [D; CSU; UC; C-ID ITIS 120; C-ID BUS 140] 4 Units \$3.00
 Recommended Preparation: RDG 56 or equivalent or through the Southwestern College multiple measures placement processes.

627902	CIS 101 501	06/07/21	08/05/21				Online	Staff	9
		06/07/21	08/05/21				Online	Staff	9
627903	CIS 101 502	06/07/21	08/05/21				Online	J. Davis	9
		06/07/21	08/05/21				Online	J. Davis	9
627904	CIS 101 503	06/07/21	08/05/21				Online	Staff	9
		06/07/21	08/05/21				Online	Staff	9
632555	CIS 101 580	06/07/21	08/05/21				Online	H. Yamada	9
		06/07/21	08/05/21				Online	H. Yamada	9

CIS 106 INTRODUCTION TO PROGRAMMING LOGIC AND DESIGN USING PYTHON [D; CSU; UC] 3 Units \$2.00
 Recommended Preparation: CIS 101 or equivalent.

629764	CIS 106 501	06/07/21	08/05/21				Online	Staff	9
		06/07/21	08/05/21				Online	Staff	9

Add Code	Sect. #	Start Date	End Date	Time	Days	Room	Location	Instructor Name	# of Weeks
CIS 115	INTRODUCTION TO PROGRAMMING USING C++ [D; CSU; UC]						4 Units		\$1.00
Recommended Preparation: CIS 101 or CIS 106 or equivalent.									
632556	CIS 115 580	06/07/21	08/05/21				Online	Staff	9
		06/07/21	08/05/21				Online	Staff	9
CIS 126	ANIMATION II - CODING [D; CSU]						6.5 Units		\$1.00
Recommended Preparation: CIS 125 or equivalent.									
632612	CIS 126 501	06/07/21	08/05/21				Online	V. Campos	9
		06/07/21	08/05/21				Online	V. Campos	9
CIS 152	USING HTML AND CSS TO CREATE WEB PAGES						2 Units		
629763	CIS 152 501	06/07/21	08/05/21				Online	Staff	9
		06/07/21	08/05/21				Online	Staff	9
CIS 160	DIGITAL INFORMATION SYSTEMS, THE INDIVIDUAL AND SOCIETY [D; CSU; UC]						3 Units		
632611	CIS 160 501	06/07/21	08/05/21				Online	S. Sankaranarayanan	9
CIS 256	WEB DESIGN II [D; CSU]						3 Units		
Recommended Preparation: CIS 123 or equivalent.									
632613	CIS 256 501	06/07/21	08/05/21				Online	V. Campos	9
		06/07/21	08/05/21				Online	V. Campos	9

COMPUTER LITERACY

CL 120	COMPUTER LITERACY [D; CSU]						1 Unit		\$1.00
Recommended Preparation: RDG 56 or the equivalent skill level as determined by the Southwestern College Reading Assessment or equivalent.									
627913	CL 120 501	06/07/21	08/05/21				Online	Staff	9
		06/07/21	08/05/21				Online	Staff	9

CONSTRUCTION INSPECTION

CI 20	INSPECTION OF MECHANICAL CONSTRUCTION [D]						3 Units		
633361	CI 20 360	06/14/21	08/05/21	6:45-9:55 PM (Lec)	TTh		Remote	C. Blaisdell	8

CULINARY ARTS

CA 181	FOOD SERVICE SAFETY, SANITATION, AND NUTRITION [D; CSU]						1 Unit		
627866	CA 181 501	06/14/21	08/05/21				Online	K. Saradpon	8
		06/14/21	08/05/21				Online	K. Saradpon	8
CA 183	FOOD PURCHASE AND CONTROL [D; CSU]						2 Units		
Recommended Preparation: BUS 183 or equivalent.									
633406	CA 183 501	06/14/21	07/29/21				Online	L. Gershuni	7
CA 185	PROFESSIONAL PASTRY DESIGN AND DECORATING [D; CSU]						3 Units		\$40.00
Prerequisite: CA 182 or equivalent.									
633373	CA 185 501	06/07/21	08/05/21				Online	M. Pelliccia	9
		06/07/21	08/05/21				Online	M. Pelliccia	9
CA 186	PROFESSIONAL BAKING AND PASTRY PRODUCTION---BREADS [D; CSU]						3 Units		\$40.00
Prerequisite: CA 182 or equivalent.									
633374	CA 186 501	06/07/21	08/05/21				Online	M. Pelliccia	9
		06/07/21	08/05/21				Online	M. Pelliccia	9

Add Code	Sect. #	Start Date	End Date	Time	Days	Room	Location	Instructor Name	# of Weeks
----------	---------	------------	----------	------	------	------	----------	-----------------	------------

DANCE

DANC 113		BALLET I [D; CSU; UC]				1.5 Units				
627948	DANC	113	01	06/14/21	08/05/21	9:25-10:00 AM (Lec)	TWTh	Remote	K. Ryan	8
				06/14/21		10:00-11:15 AM (Lab)	TWTh	Remote	K. Ryan	8
Remote K. Ryan 8										
DANC 114		BALLET II [D; CSU; UC]				1.5 Units				
Prerequisite: DANC 113 or equivalent.										
627949	DANC	114	01	06/14/21	08/05/21	9:25-10:00 AM (Lec)	TWTh	Remote	K. Ryan	8
				06/14/21		10:00-11:15 AM (Lab)	TWTh	Remote	K. Ryan	8
DANC 115		BALLET III [D; CSU; UC]				1.5 Units				
Prerequisite: DANC 114 or equivalent.										
627950	DANC	115	01	06/14/21	08/05/21	9:25-10:00 AM (Lec)	TWTh	Remote	K. Ryan	8
				06/14/21		10:00-11:15 AM (Lab)	TWTh	Remote	K. Ryan	8
DANC 116		BALLET IV [D; CSU; UC]				1.5 Units				
Prerequisite: DANC 115 or equivalent.										
627951	DANC	116	01	06/14/21	08/05/21	9:25-10:00 AM (Lec)	TWTh	Remote	K. Ryan	8
				06/14/21		10:00-11:15 AM (Lab)	TWTh	Remote	K. Ryan	8

DENTAL HYGIENE

DH 118		TRANSITIONAL CLINIC [D; CSU]				1.5 Units				
Prerequisite: DH 112 or equivalent. Limitation on Enrollment: Enrollment is limited to those students in the Dental Hygiene program.										
627952	DH	118	70	06/07/21	07/13/21	12:15-1:20 PM (Lec)	MW	Remote	Staff	6
				06/07/21	07/13/21	2:00-6:15 PM (Lab)	MW	Remote	Staff	6
				06/07/21	07/13/21	TBA		Remote	Staff	6
				06/07/21	07/13/21	7:30-11:45 AM (Lab)	T	Remote	Staff	6
				06/07/21	07/13/21	TBA		Remote	Staff	6
<i>The class will include in person instruction and will meet at HEC National City room #7216 & 7217. Please contact instructor for more information.</i>										
627953	DH	118	71	06/07/21	07/13/21	12:15-1:20 PM (Lec)	MW	Remote	Staff	6
				06/07/21	07/13/21	7:30-11:45 AM (Lab)	MW	Remote	Staff	6
				06/07/21	07/13/21	TBA		Remote	Staff	6
				06/07/21	07/13/21	2:00-6:15 PM (Lab)	T	Remote	Staff	6
				06/07/21	07/13/21	TBA		Remote	Staff	6
<i>The class will include in person instruction and will meet at HEC National City room #7216 & 7217. Please contact instructor for more information.</i>										

ECONOMICS

ECON 101		PRINCIPLES OF ECONOMICS I [D; CSU; UC; C-ID ECON 202]				3 Units				
Prerequisite: MATH 60 or equivalent or through the Southwestern College multiple measures placement processes (Completion of MATH 100 without prior MATH 60 or equivalent does not satisfy this requisite.) Recommended Preparation: MATH 119; MATH 120; RDG 158 or equivalent or through the Southwestern College multiple measures placement processes.										
629758	ECON	101	501	06/14/21	08/05/21			Online	Staff	8
629759	ECON	101	502	06/14/21	08/05/21			Online	Staff	8
632620	ECON	101	503	06/14/21	08/05/21			Online	H. Elahi-Shirazi	8
ECON 102		PRINCIPLES OF ECONOMICS II [D; CSU; UC; C-ID ECON 201]				3 Units				
Prerequisite: MATH 60 or equivalent or through the Southwestern College multiple measures placement processes. Recommended Preparation: ECON 101 or equivalent; RDG 158 or equivalent or through the Southwestern College multiple measures placement processes; MATH 119 and MATH 120 or equivalent or through the Southwestern College multiple measures placement processes.										
629761	ECON	102	501	06/14/21	08/05/21			Online	P. Crane	8
629762	ECON	102	502	06/14/21	08/05/21			Online	P. Crane	8
632621	ECON	102	503	06/14/21	08/05/21			Online	P. Crane	8

Add Code	Sect. #	Start Date	End Date	Time	Days	Room	Location	Instructor Name	# of Weeks
----------	---------	------------	----------	------	------	------	----------	-----------------	------------

EDUCATION

ED 100		TUTOR TRAINING: LEVEL I [D; CSU]				2 Units			
Recommended Preparation: RDG 158 or equivalent or through the Southwestern College multiple measures placement processes.									
632507	ED	100	501	06/17/21	07/29/21		Online	S. Hutchins-Williams	7

EMERGENCY MEDICAL TECHNOLOGY

EMT 101		HEALTHCARE PROVIDER CPR [D; CSU]				1 Unit			\$30.00	
Recommended Preparation: RDG 56 or equivalent or through the Southwestern College multiple measures placement processes.										
627962	EMT	101	301	06/16/21	06/23/21	8:30-5:20 PM (Lec)	W	Remote	Staff	2
<i>The last day of class is an in-person laboratory held at the Higher Education Center - Otay Mesa. All lectures are remote learning.</i>										
627963	EMT	101	302	07/07/21	07/14/21	8:30-5:20 PM (Lec)	W	Remote	Staff	2
<i>The last day of class is an in-person laboratory held at the Higher Education Center - Otay Mesa. All lectures are remote learning.</i>										
627964	EMT	101	350	07/17/21	07/24/21	8:00-4:50 PM (Lec)	S	Remote	Staff	2
<i>The last day of class is an in-person laboratory held at the Higher Education Center - Otay Mesa. All lectures are remote learning.</i>										

EMT 109		EMERGENCY MEDICAL RESPONDER [D; CSU]				3 Units				
Corequisite: EMT 101. Recommended Preparation: RDG 56 or equivalent or through the Southwestern College multiple measures placement processes.										
627965	EMT	109	301	06/07/21	08/05/21	9:00-2:50 PM (Lec)	M	Remote	Staff	9
				06/07/21	08/05/21	2:50-3:50 PM (Lab)	M	Remote	Staff	9
<i>This class includes a combination of in-person labs and remote learning.</i>										
627966	EMT	109	302	06/14/21	08/05/21	9:00-12:20 PM (Lec)	TTh	Remote	Staff	8
				06/14/21	08/05/21	12:20-12:40 PM (Lab)	TTh	Remote	Staff	8
<i>This class includes a combination of in-person labs and remote learning.</i>										

EMT 113		EMERGENCY MEDICAL TECHNICIAN--BASIC [D; CSU]				5 Units				
Prerequisite: EMT 101 and EMT 109 or equivalent; or EMT 125 or equivalent. Recommended Preparation: RDG 158 or equivalent or through the Southwestern College multiple measures placement processes.										
627967	EMT	113	301	06/07/21	07/07/21	9:00-1:50 PM (Lec)	MTWTh	Remote	Staff	5
				06/07/21	07/07/21	2:00-2:50 PM (Lab)	MTWTh	Remote	Staff	5
<i>Plus three 8-hour Saturdays, TBA. This class includes a combination of in-person labs and remote learning.</i>										

EMT 113L		EMERGENCY MEDICAL TECHNICIAN LABORATORY -BASIC [D; CSU]				3 Units			\$40.00	
Prerequisite: EMT 113 or equivalent. Limitation on Enrollment: Student must possess a valid "Healthcare Provider" level CPR card.										
627968	EMT	113L	301	07/08/21	08/05/21	9:00-10:50 AM (Lec)	MTWTh	Remote	Staff	5
				07/08/21	08/05/21	11:00-2:05 PM (Lab)	MTWTh	Remote	Staff	5
<i>Plus three 8-hour Saturdays, TBA. This class includes a combination of in-person labs and remote learning.</i>										
627969	EMT	113L	302	07/08/21	08/05/21	9:00-10:50 AM (Lec)	MTWTh	Remote	Staff	5
				07/08/21	08/05/21	11:00-2:05 PM (Lab)	MTWTh	Remote	Staff	5
<i>Plus three 8-hour Saturdays, TBA. This class includes a combination of in-person labs and remote learning.</i>										

EMT PARAMEDICS

EMTP 115		PARAMEDIC PREPARATION [D; CSU]				3.5 Units				
Recommended Preparation: EMT 113 and EMT 113L or equivalent; RDG 158 or equivalent or through the Southwestern College multiple measures placement processes.										
627970	EMTP	115	301	05/25/21	07/27/21	9:30-2:40 PM (Lec)	T	Remote	Staff	10
				05/25/21	07/27/21	2:50-4:05 PM (Lab)	T	Remote	Staff	10
<i>Plus three 8-hour Saturdays, TBA. This class includes a combination of in-person labs and remote learning.</i>										

Add Code	Sect. #	Start Date	End Date	Time	Days	Room	Location	Instructor Name	# of Weeks
EMTP 225 HOSPITAL CLINICAL EXPERIENCE FOR PARAMEDICS [D; CSU]						3 Units			
Prerequisite: EMTP 201 or equivalent. Limitation on Enrollment: Student must complete criminal background check and drug screen prior to clinical experience.									
627971	EMTP 225	E1	05/22/21	07/14/21	TBA		Remote	G. Martin	7
<i>This class will meet at least three days per week for on site labs.</i>									

ENGLISH

ENGL 45 SUPPORT FOR COLLEGE COMPOSITION: READING AND WRITING ANALYTICALLY [ND]						2 Units			
Corequisite: ENGL 115 or equivalent.									
628012	ENGL 45	P501	06/14/21	08/05/21			Online	C. Luna	8
<i>You must be concurrently enrolled in ENGL-115-P501 and ENGL-45-P501. This section is part of English 115+, which allows students not placing directly into English 115 to enroll with co-requisite support.</i>									
632508	ENGL 45	P502	06/14/21	08/05/21			Online	K. Marshall	8
<i>You must be concurrently enrolled in ENGL-115-P502 and ENGL-45-P502. This section is part of English 115+, which allows students not placing directly into English 115 to enroll with co-requisite support.</i>									

ENGL 115 COLLEGE COMPOSITION: READING AND WRITING ANALYTICALLY						4 Units			
627972	ENGL 115	01	06/14/21	08/05/21	8:00-10:05 AM (Lec)	MTWTh	Remote	A. Sanchez	8
627973	ENGL 115	02	06/14/21	08/05/21	8:00-10:05 AM (Lec)	MTWTh	Remote	R. Ocampo	8
627974	ENGL 115	03	06/14/21	08/05/21	10:30-12:35 PM (Lec)	MTWTh	Remote	A. McDonnell	8
627975	ENGL 115	04	06/14/21	08/05/21	11:00-1:05 PM (Lec)	MTWTh	Remote	A. Sanchez	8
627982	ENGL 115	501	06/14/21	08/05/21			Online	E. Flewelling	8
627983	ENGL 115	502	06/14/21	08/05/21			Online	E. Flewelling	8
627984	ENGL 115	503	06/14/21	08/05/21			Online	M. Kinkade	8
627985	ENGL 115	504	06/14/21	08/05/21			Online	E. Meyers	8
627986	ENGL 115	505	06/14/21	08/05/21			Online	R. Bacchia	8
627987	ENGL 115	506	06/14/21	08/05/21			Online	R. Osborne	8
627988	ENGL 115	508	06/14/21	08/05/21			Online	M. Griffing	8
627989	ENGL 115	509	06/14/21	08/05/21			Online	F. Hayashi	8
632511	ENGL 115	510	06/14/21	08/05/21			Online	L. Brooks	8
632512	ENGL 115	511	06/14/21	08/05/21			Online	F. Ball	8
632514	ENGL 115	512	06/14/21	08/05/21			Online	A. Gardella	8
632515	ENGL 115	513	06/14/21	08/05/21			Online	C. London	8
632516	ENGL 115	514	06/14/21	08/05/21			Online	B. Mark	8
632517	ENGL 115	515	06/14/21	08/05/21			Online	K. Bailey	8
632518	ENGL 115	516	06/14/21	08/05/21			Online	J. Posey	8
632489	ENGL 115	570	06/14/21	08/05/21			Online	D. Marquel	8
632541	ENGL 115	580	06/14/21	07/29/21			Online	K. Malfara	7
632542	ENGL 115	586	06/14/21	07/29/21			Online	K. Malfara	7
627995	ENGL 115	P501	06/14/21	08/05/21			Online	C. Luna	8
<i>You must be concurrently enrolled in ENGL-115-P501 and ENGL-45-P501. This section is part of English 115+, which allows students not placing directly into English 115 to enroll with co-requisite support.</i>									
632510	ENGL 115	P502	06/14/21	08/05/21			Online	K. Marshall	8
<i>You must be concurrently enrolled in ENGL-115-P502 and ENGL-45-P502. This section is part of English 115+, which allows students not placing directly into English 115 to enroll with co-requisite support.</i>									

ENGL 116 CRITICAL THINKING AND ARGUMENT [D; CSU; UC; C-ID ENGL 105]						4 Units				\$1.00
Prerequisite: ENGL 115 or ENGL 115H or ADN 140 or equivalent or through the Southwestern College multiple measures placement processes.										
627996	ENGL 116	01	06/14/21	08/05/21	8:00-10:05 AM (Lec)	MTWTh	Remote	C. Kovach	8	
627998	ENGL 116	03	06/14/21	08/05/21	10:30-12:35 PM (Lec)	MTWTh	Remote	L. Smith	8	
628000	ENGL 116	501	06/14/21	08/05/21			Online	S. Yonker	8	
628001	ENGL 116	502	06/14/21	08/05/21			Online	B. Fazzolari	8	
628002	ENGL 116	503	06/14/21	08/05/21			Online	B. Fazzolari	8	
628003	ENGL 116	504	06/14/21	08/05/21			Online	J. Hiskey	8	
628004	ENGL 116	505	06/14/21	08/05/21			Online	P. McGlynn	8	
628005	ENGL 116	506	06/14/21	08/05/21			Online	V. Freeman	8	
628006	ENGL 116	507	06/14/21	08/05/21			Online	C. Dolce	8	
628007	ENGL 116	508	06/14/21	08/05/21			Online	R. Walker	8	
628008	ENGL 116	509	06/14/21	08/05/21			Online	V. Moore	8	
632519	ENGL 116	510	06/14/21	08/05/21			Online	B. Flis	8	

Add Code		Sect. #	Start Date	End Date	Time	Days	Room	Location	Instructor Name	# of Weeks
632520	ENGL	116 511	06/14/21	08/05/21				Online	R. Willingham	8
632521	ENGL	116 512	06/14/21	08/05/21				Online	J. Arredondo	8
632490	ENGL	116 570	06/14/21	08/05/21				Online	T. Salkey	8

ENGLISH AS A SECOND LANGUAGE

ESL 29D	ACADEMIC ESL SPEAKING, LISTENING AND GRAMMAR I [ND]	5 Units			
Recommended Concurrent Enrollment: ESL 29E. Recommended Preparation: ESL 19A1 and ESL 19A2 or equivalent or through the Southwestern College multiple measures placement processes.					
633200	ESL 29D 580	06/07/21 07/29/21	Online	E. Pumpelly	8
ESL 29E	ACADEMIC ESL READING, WRITING, AND GRAMMAR I [ND]	5 Units			
Recommended Concurrent Enrollment: ESL 29D. Recommended Preparation: ESL 19A1 and ESL 19A2 or equivalent or through the Southwestern College multiple measures placement processes.					
633201	ESL 29E 580	06/07/21 07/29/21	Online	F. Piovesan	8
ESL 49D	ACADEMIC ESL SPEAKING, LISTENING, AND GRAMMAR III [ND]	5 Units			
Prerequisite: ESL 39D and ESL 39E or equivalent or through the Southwestern College multiple measures placement processes. Recommended Concurrent Enrollment: ESL 49E.					
633165	ESL 49D 501	06/07/21 07/29/21	Online	D. Moody	8
ESL 49E	ACADEMIC ESL READING, WRITING, AND GRAMMAR III [ND]	5 Units			
Prerequisite: ESL 39D and ESL 39E or equivalent or through the Southwestern College multiple measures placement processes. Recommended Concurrent Enrollment: ESL 49D.					
633166	ESL 49E 501	06/07/21 07/29/21	Online	G. Galvin	8

EXERCISE SCIENCE ACTIVITY

ES/A 101	BODY SCULPT I [D; CSU; UC]	1 Unit					
628013	ES/A 101 01	06/07/21 07/29/21	10:30-11:55 AM (Lab)	MTWTh	Remote	C. Pangelinan	8
632625	ES/A 101 501	06/14/21 08/05/21			Online	L. Ratto	8
ES/A 102	BODY SCULPT II [D; CSU; UC]	1 Unit					
Prerequisite: ES/A 101 or equivalent.							
628014	ES/A 102 01	06/07/21 07/29/21	10:30-11:55 AM (Lab)	MTWTh	Remote	Staff	8
632627	ES/A 102 501	06/14/21 08/05/21			Online	Staff	8
ES/A 103	BODY SCULPT III [D; CSU; UC]	1 Unit					
Prerequisite: ES/A 102 or equivalent.							
628015	ES/A 103 01	06/07/21 07/29/21	10:30-11:55 AM (Lab)	MTWTh	Remote	Staff	8
632629	ES/A 103 501	06/14/21 08/05/21			Online	Staff	8
ES/A 104	INTENSE BOOT CAMP [D; CSU; UC]	1 Unit					
632661	ES/A 104 501	06/28/21 08/05/21			Online	A. Chelik	6
ES/A 128	ZUMBA	1 Unit					
628027	ES/A 128 80	06/14/21 07/29/21	9:00-10:50 AM (Lab)	MTWTh	Remote	Staff	7
ES/A 186	FITNESS EDUCATION CENTER: FOUNDATIONAL FITNESS TRAINING I [D; CSU; UC]	1 Unit					
628054	ES/A 186 01	06/07/21 07/29/21	8:35-10:00 AM (Lab)	MTWTh	Remote	J. Rodriguez	8
632644	ES/A 186 501	06/07/21 07/29/21			Online	A. Rock	8
632649	ES/A 186 502	06/07/21 07/29/21			Online	A. Rock	8
ES/A 187	FITNESS EDUCATION CENTER: FOUNDATIONAL FITNESS TRAINING II [D; CSU; UC]	1 Unit					
Prerequisite: ES/A 186 or equivalent.							
628057	ES/A 187 01	06/07/21 07/29/21	8:35-10:00 AM (Lab)	MTWTh	Remote	Staff	8
632645	ES/A 187 501	06/07/21 07/29/21			Online	Staff	8
632650	ES/A 187 502	06/07/21 07/29/21			Online	Staff	8

Add Code	Sect. #	Start Date	End Date	Time	Days	Room	Location	Instructor Name	# of Weeks
ES/A 188 FITNESS EDUCATION CENTER: SPECIALIZED FITNESS TRAINING I [D; CSU; UC] 1 Unit									
Prerequisite: ES/A 187 or equivalent.									
628060	ES/A 188 01	06/07/21	07/29/21	8:35-10:00 AM (Lab)				MTWTh	
Remote	Staff	8							
632647	ES/A 188 501	06/07/21	07/29/21				Online	Staff	8
632651	ES/A 188 502	06/07/21	07/29/21				Online	Staff	8
ES/A 189 FITNESS EDUCATION CENTER: SPECIALIZED FITNESS TRAINING II [D; CSU; UC] 1 Unit									
Prerequisite: ES/A 188 or equivalent.									
628063	ES/A 189 01	06/07/21	07/29/21	8:35-10:00 AM (Lab)	MTWTh		Remote	Staff	8
632648	ES/A 189 501	06/07/21	07/29/21				Online	Staff	8
632652	ES/A 189 502	06/07/21	07/29/21				Online	Staff	8
ES/A 190 INTRODUCTORY WEIGHT TRAINING AND PHYSICAL FITNESS [D; CSU; UC] 1 Unit									
628068	ES/A 190 07	06/14/21	08/05/21	3:00-4:25 PM (Lab)	MTWTh		Remote	E. Carberry	8
628069	ES/A 190 09	06/14/21	08/05/21	3:00-4:25 PM (Lab)	MTWTh		Remote	C. Logan	8
632653	ES/A 190 501	06/07/21	07/29/21				Online	Y. Mossadeghi	8
632657	ES/A 190 502	06/07/21	07/29/21				Online	M. Meral	8
ES/A 191 BEGINNING WEIGHT TRAINING AND PHYSICAL FITNESS [D; CSU; UC] 1 Unit									
Prerequisite: ES/A 190 or equivalent.									
628072	ES/A 191 07	06/14/21	08/05/21	3:00-4:25 PM (Lab)	MTWTh		Remote	Staff	8
628073	ES/A 191 09	06/14/21	08/05/21	3:00-4:25 PM (Lab)	MTWTh		Remote	Staff	8
632654	ES/A 191 501	06/07/21	07/29/21				Online	Staff	8
632658	ES/A 191 502	06/07/21	07/29/21				Online	Staff	8
ES/A 192 INTERMEDIATE WEIGHT TRAINING AND PHYSICAL FITNESS [D; CSU; UC] 1 Unit									
Prerequisite: ES/A 191 or equivalent.									
628076	ES/A 192 07	06/14/21	08/05/21	3:00-4:25 PM (Lab)	MTWTh		Remote	Staff	8
628077	ES/A 192 09	06/14/21	08/05/21	3:00-4:25 PM (Lab)	MTWTh		Remote	Staff	8
632655	ES/A 192 501	06/07/21	07/29/21				Online	Staff	8
632659	ES/A 192 502	06/07/21	07/29/21				Online	Staff	8
ES/A 193 ADVANCED WEIGHT TRAINING AND PHYSICAL FITNESS [D; CSU; UC] 1 Unit									
Prerequisite: ES/A 192 or equivalent.									
628080	ES/A 193 07	06/14/21	08/05/21	3:00-4:25 PM (Lab)	MTWTh		Remote	Staff	8
628081	ES/A 193 09	06/14/21	08/05/21	3:00-4:25 PM (Lab)	MTWTh		Remote	Staff	8
632656	ES/A 193 501	06/07/21	07/29/21				Online	Staff	8
632660	ES/A 193 502	06/07/21	07/29/21				Online	Staff	8
ES/A 249 INTRODUCTION TO CHEERLEADING CONDITIONING [D; CSU; UC] 2 Units									
632677	ES/A 249 60	06/14/21	08/05/21	4:45-9:05 PM (Lab)	M		Remote	Staff	8
<i>Additional 9 hours and 15 minutes to be completed per week.</i>									
ES/A 250 BEGINNING CHEERLEADING CONDITIONING [D; CSU; UC] 2 Units									
Prerequisite: ES/A 249 or equivalent.									
632728	ES/A 250 60	06/14/21	08/05/21	4:45-9:05 PM (Lab)	M		Remote	Staff	8
<i>Additional 9 hours and 15 minutes to be completed per week.</i>									
ES/A 251 INTERMEDIATE CHEERLEADING CONDITIONING [D; CSU; UC] 2 Units									
Prerequisite: ES/A 250 or equivalent.									
632729	ES/A 251 60	06/14/21	08/05/21	4:45-9:05 PM (Lab)	M		Remote	Staff	8
<i>Additional 9 hours and 15 minutes to be completed per week.</i>									
ES/A 252 ADVANCED CHEERLEADING CONDITIONING [D; CSU; UC] 2 Units									
Prerequisite: ES/A 251 or equivalent.									
632730	ES/A 252 60	06/14/21	08/05/21	4:45-9:05 PM (Lab)	M		Remote	Staff	8
<i>Additional 9 hours and 15 minutes to be completed per week.</i>									
ES/A 264 BEGINNING YOGA [D; CSU; UC] 1 Unit									
628113	ES/A 264 02	06/07/21	07/29/21	8:00-9:25 AM (Lab)	MTWTh		Remote	T. Cason-Davis	8
ES/A 265 INTERMEDIATE YOGA [D; CSU; UC] 1 Unit									
Prerequisite: ES/A 264 or equivalent.									
628115	ES/A 265 02	06/07/21	07/29/21	8:00-9:25 AM (Lab)	MTWTh		Remote	Staff	8

Add Code	Sect. #	Start Date	End Date	Time	Days	Room	Location	Instructor Name	# of Weeks	
ES/A 266	ADVANCED YOGA [D; CSU; UC]						1 Unit			
Prerequisite: ES/A 265 or equivalent.										
628117	ES/A 266 02	06/07/21	07/29/21	8:00-9:25 AM (Lab)	MTWTh		Remote	Staff	8	
ES/A 280	BEGINNING HIKING FOR FITNESS [D; CSU; UC]						2 Units			
Prerequisite: Demonstrated physical endurance.										
633357	ES/A 280 601	06/14/21	08/05/21	TBA			Remote	Staff	8	
		06/14/21	08/05/21	7:30-12:50 PM (Lab)	F		Remote	Staff	8	
ES/A 281	INTERMEDIATE HIKING FOR FITNESS [D; CSU; UC]						2 Units			
Prerequisite: ES/A 280 or equivalent; Demonstrated physical endurance.										
633358	ES/A 281 601	06/14/21	08/05/21	TBA			Remote	Staff	8	
		06/14/21	08/05/21	7:30-12:50 PM (Lab)	F		Remote	Staff	8	

EXERCISE SCIENCE SPECIALIZED

ES/S 106	ADAPTED FLEXIBILITY FITNESS [D; CSU; UC]						1 Unit			
Prerequisite: Level of physical strength and agility to avoid injury to the student and others in course activities.										
633351	ES/S 106 501	06/14/21	08/05/21				Online	Staff	8	

EXERCISE SCIENCE THEORY

ES/T 108	THEORY AND APPLICATION OF CONDITIONING: BASKETBALL I [D; CSU; UC]						1 Unit			
633528	ES/T 108 01	06/28/21	08/05/21	6:00-8:50 PM (Lab)	M		Remote	K. Wallace	6	
		06/28/21	08/05/21	5:00-7:50 PM (Lab)	TTh		Remote	K. Wallace	6	
628120	ES/T 108 03	06/28/21	08/05/21	12:30-3:20 PM (Lab)	MW		Remote	K. Wallace	6	
		06/28/21	08/05/21	6:00-8:50 PM (Lab)	Th		Remote	K. Wallace	6	
ES/T 109	THEORY AND APPLICATION OF CONDITIONING: BASKETBALL II [D; CSU; UC]						1 Unit			
Prerequisite: ES/T 108 or equivalent.										
628121	ES/T 109 03	06/28/21	08/05/21	12:30-3:20 PM (Lab)	MW		Remote	Staff	6	
		06/28/21	08/05/21	6:00-8:50 PM (Lab)	Th		Remote	Staff	6	
ES/T 110	THEORY AND APPLICATION OF CONDITIONING: BASKETBALL III [D; CSU; UC]						1 Unit			
Prerequisite: ES/T 109 or equivalent.										
628122	ES/T 110 03	06/28/21	08/05/21	12:30-3:20 PM (Lab)	MW		Remote	Staff	6	
		06/28/21	08/05/21	6:00-8:50 PM (Lab)	Th		Remote	Staff	6	
ES/T 111	THEORY AND APPLICATION OF CONDITIONING: BASEBALL I [D; CSU; UC]						1 Unit			
628123	ES/T 111 01	06/28/21	08/05/21	12:00-2:50 PM (Lab)	TWTh		Remote	J. Martel	6	
ES/T 112	THEORY AND APPLICATION OF CONDITIONING: BASEBALL II [D; CSU; UC]						1 Unit			
Prerequisite: ES/T 111 or equivalent.										
628124	ES/T 112 01	06/28/21	08/05/21	12:00-2:50 PM (Lab)	TWTh		Remote	Staff	6	
ES/T 113	THEORY AND APPLICATION OF CONDITIONING: BASEBALL III [D; CSU; UC]						1 Unit			
Prerequisite: ES/T 112 or equivalent.										
628125	ES/T 113 01	06/28/21	08/05/21	12:00-2:50 PM (Lab)	TWTh		Remote	Staff	6	
ES/T 114	THEORY AND APPLICATION OF CONDITIONING: FOOTBALL I [D; CSU; UC]						1 Unit			
628126	ES/T 114 01	06/28/21	08/05/21	4:35-6:40 PM (Lab)	MTWTh		Remote	C. Logan	6	
628127	ES/T 114 03	06/28/21	08/05/21	4:35-6:40 PM (Lab)	MTWTh		Remote	E. Burhop	6	
ES/T 115	THEORY AND APPLICATION OF CONDITIONING: FOOTBALL II [D; CSU; UC]						1 Unit			
Prerequisite: ES/T 114 or Equivalent.										
628128	ES/T 115 01	06/28/21	08/05/21	4:35-6:40 PM (Lab)	MTWTh		Remote	Staff	6	
628129	ES/T 115 03	06/28/21	08/05/21	4:35-6:40 PM (Lab)	MTWTh		Remote	Staff	6	

Add Code	Sect. #	Start Date	End Date	Time	Days	Room	Location	Instructor Name	# of Weeks	
ES/T 116	THEORY AND APPLICATION OF CONDITIONING: FOOTBALL III [D; CSU; UC]						1 Unit			
Prerequisite: ES/T 115 or equivalent.										
628130	ES/T 116 01	06/28/21	08/05/21	4:35-6:40 PM (Lab)	MTWTh		Remote	Staff	6	
628131	ES/T 116 03	06/28/21	08/05/21	4:35-6:40 PM (Lab)	MTWTh		Remote	Staff	6	
ES/T 117	THEORY AND APPLICATION OF CONDITIONING: TENNIS I [D; CSU; UC]						1 Unit			
632668	ES/T 117 01	06/28/21	08/05/21	1:20-3:25 PM (Lab)	MTWTh		Remote	Staff	6	
ES/T 118	THEORY AND APPLICATION OF CONDITIONING: TENNIS II [D; CSU; UC]						1 Unit			
Prerequisite: ES/T 117 or equivalent.										
632669	ES/T 118 01	06/28/21	08/05/21	1:20-3:25 PM (Lab)	MTWTh		Remote	Staff	6	
ES/T 119	THEORY AND APPLICATION OF CONDITIONING: TENNIS III [D; CSU; UC]						1 Unit			
Prerequisite: ES/T 118 or equivalent.										
632670	ES/T 119 01	06/28/21	08/05/21	1:20-3:25 PM (Lab)	MTWTh		Remote	Staff	6	
ES/T 120	THEORY AND APPLICATION OF CONDITIONING: VOLLEYBALL I [D; CSU; UC]						1 Unit			
628132	ES/T 120 01	06/28/21	08/05/21	3:00-5:05 PM (Lab)	MTWTh		Remote	T. Reeves	6	
ES/T 121	THEORY AND APPLICATION OF CONDITIONING: VOLLEYBALL II [D; CSU; UC]						1 Unit			
Prerequisite: ES/T 120 or equivalent.										
628133	ES/T 121 01	06/28/21	08/05/21	3:00-5:05 PM (Lab)	MTWTh		Remote	Staff	6	
ES/T 122	THEORY AND APPLICATION OF CONDITIONING: VOLLEYBALL III [D; CSU; UC]						1 Unit			
Prerequisite: ES/T 121 or equivalent.										
628134	ES/T 122 01	06/28/21	08/05/21	3:00-5:05 PM (Lab)	MTWTh		Remote	Staff	6	
ES/T 123	THEORY AND APPLICATION OF CONDITIONING: SOCCER I [D; CSU; UC]						1 Unit			
628135	ES/T 123 04	06/28/21	08/05/21	10:30-12:35 PM (Lab)	MTWTh		Remote	M. Tont	6	
628136	ES/T 123 06	06/28/21	08/05/21	10:10-12:15 PM (Lab)	MTWTh		Remote	C. Soto	6	
ES/T 124	THEORY AND APPLICATION OF CONDITIONING: SOCCER II [D; CSU; UC]						1 Unit			
Prerequisite: ES/T 123 or equivalent.										
628137	ES/T 124 04	06/28/21	08/05/21	10:30-12:35 PM (Lab)	MTWTh		Remote	Staff	6	
628138	ES/T 124 06	06/28/21	08/05/21	10:10-12:15 PM (Lab)	MTWTh		Remote	Staff	6	
ES/T 125	THEORY AND APPLICATION OF CONDITIONING: SOCCER III [D; CSU; UC]						1 Unit			
Prerequisite: ES/T 124 or equivalent.										
628139	ES/T 125 04	06/28/21	08/05/21	10:30-12:35 PM (Lab)	MTWTh		Remote	Staff	6	
628140	ES/T 125 06	06/28/21	08/05/21	10:10-12:15 PM (Lab)	MTWTh		Remote	Staff	6	
ES/T 129	THEORY AND APPLICATION OF CONDITIONING: CROSS COUNTRY I [D; CSU; UC]						1 Unit			
628141	ES/T 129 01	06/28/21	08/05/21	2:00-4:05 PM (Lab)	MTWTh		Remote	A. Campbell	6	
ES/T 130	THEORY AND APPLICATION OF CONDITIONING: CROSS COUNTRY II [D; CSU; UC]						1 Unit			
Prerequisite: ES/T 129 or equivalent.										
628142	ES/T 130 01	06/28/21	08/05/21	2:00-4:05 PM (Lab)	MTWTh		Remote	Staff	6	
ES/T 131	THEORY AND APPLICATION OF CONDITIONING: CROSS COUNTRY III [D; CSU; UC]						1 Unit			
Prerequisite: ES/T 130 or equivalent.										
628143	ES/T 131 01	06/28/21	08/05/21	2:00-4:05 PM (Lab)	MTWTh		Remote	Staff	6	
ES/T 132	THEORY AND APPLICATION OF CONDITIONING: SOFTBALL I [D; CSU; UC]						1 Unit			
628144	ES/T 132 01	06/28/21	08/05/21	10:30-1:20 PM (Lab)	TWTh		Remote	Y. Mossadeghi	6	
ES/T 133	THEORY AND APPLICATION OF CONDITIONING: SOFTBALL II						1 Unit			
628145	ES/T 133 01	06/28/21	08/05/21	10:30-1:20 PM (Lab)	TWTh		Remote	Staff	6	
ES/T 134	THEORY AND APPLICATION OF CONDITIONING: SOFTBALL III						1 Unit			
628146	ES/T 134 01	06/28/21	08/05/21	10:30-1:20 PM (Lab)	TWTh		Remote	Staff	6	

Add Code	Sect. #	Start Date	End Date	Time	Days	Room	Location	Instructor Name	# of Weeks	
ES/T 139	FITNESS SPECIALIST INTERNSHIP [D; CSU]						3 Units			
Prerequisite: ES/T 135, ES/T 136, ES/T 138, and ES/T 140, or equivalent.										
628147	ES/T	139	01	06/28/21	08/05/21	8:00-11:20 AM (Lec)	M	Remote	Staff	6
				06/28/21	08/05/21	1:00-6:50 PM (Lab)	TWTh	Remote	Staff	6
ES/T 141	THEORY AND APPLICATION OF CONDITIONING: WATER POLO I [D; CSU; UC]						1 Unit			
Recommended Preparation: ES/A 158 or equivalent.										
628148	ES/T	141	01	06/28/21	08/05/21	3:45-5:50 PM (Lab)	MTWTh	Remote	A. Mashburn	6
628149	ES/T	141	03	06/28/21	08/05/21	1:30-3:35 PM (Lab)	MTWTh	Remote	J. Perez Romero	6
ES/T 142	THEORY AND APPLICATION OF CONDITIONING: WATER POLO II [D; CSU; UC]						1 Unit			
Prerequisite: ES/T 141 or equivalent.										
628150	ES/T	142	01	06/28/21	08/05/21	3:45-5:50 PM (Lab)	MTWTh	Remote	Staff	6
628151	ES/T	142	03	06/28/21	08/05/21	1:30-3:35 PM (Lab)	MTWTh	Remote	Staff	6
ES/T 143	THEORY AND APPLICATION OF CONDITIONING: WATER POLO III [D; CSU; UC]						1 Unit			
Prerequisite: ES/T 142 or equivalent.										
628152	ES/T	143	01	06/28/21	08/05/21	3:45-5:50 PM (Lab)	MTWTh	Remote	Staff	6
628153	ES/T	143	03	06/28/21	08/05/21	1:30-3:35 PM (Lab)	MTWTh	Remote	Staff	6
ES/T 144	THEORY AND APPLICATION OF CONDITIONING: WATER POLO IV [D; CSU; UC]						1 Unit			
Prerequisite: ES/T 143 or equivalent.										
628154	ES/T	144	01	06/28/21	08/05/21	3:45-5:50 PM (Lab)	MTWTh	Remote	Staff	6
628155	ES/T	144	03	06/28/21	08/05/21	1:30-3:35 PM (Lab)	MTWTh	Remote	Staff	6
ES/T 145	THEORY AND CONDITIONING OF SWIM AND DIVE I [D; CSU; UC]						1 Unit			
Recommended Preparation: ES/A 158 or equivalent.										
628156	ES/T	145	01	06/28/21	08/05/21	10:00-12:50 PM (Lab)	TWTh	Remote	M. Ustaszewski	6
ES/T 146	THEORY AND CONDITIONING OF SWIM AND DIVE II [D; CSU; UC]						1 Unit			
Prerequisite: ES/T 145 or equivalent.										
628157	ES/T	146	01	06/28/21	08/05/21	10:00-12:50 PM (Lab)	TWTh	Remote	Staff	6
ES/T 147	THEORY AND CONDITIONING OF SWIM AND DIVE III [D; CSU; UC]						1 Unit			
Prerequisite: ES/T 146 or equivalent.										
628158	ES/T	147	01	06/28/21	08/05/21	10:00-12:50 PM (Lab)	TWTh	Remote	Staff	6
ES/T 148	THEORY AND CONDITIONING OF SWIM AND DIVE IV [D; CSU; UC]						1 Unit			
Prerequisite: ES/T 147 or equivalent.										
628159	ES/T	148	01	06/28/21	08/05/21	10:00-12:50 PM (Lab)	TWTh	Remote	Staff	6
ES/T 202	INTRODUCTION TO KINESIOLOGY [D; CSU; UC; C-ID KIN 100]						3 Units			
632640	ES/T	202	501	06/14/21	08/05/21			Online	B. Platt	8

FAMILY STUDIES

CD 135	PRINCIPLES OF FAMILY DEVELOPMENT [D; CSU; UC]						3 Units			
Recommended Preparation: RDG 158 or equivalent or through the Southwestern College multiple measures placement processes.										
627871	CD	135	580	06/07/21	08/05/21			Online	W. Marsden	9
627872	CD	135	581	06/07/21	08/05/21			Online	W. Marsden	9
CD 170	PRINCIPLES OF CHILD DEVELOPMENT [D; CSU; UC; C-ID CDEV 100]						3 Units			
Recommended Preparation: RDG 158 or equivalent or through the Southwestern College multiple measures placement processes.										
627873	CD	170	580	06/07/21	08/05/21			Online	V. Watson	9
627874	CD	170	581	06/07/21	08/05/21			Online	V. Watson	9
627875	CD	170	582	06/07/21	08/05/21			Online	V. Enriquez-Campos	9
627876	CD	170	583	06/07/21	08/05/21			Online	M. Garcia	9
627877	CD	170	584	06/07/21	08/05/21			Online	M. Garcia	9
627878	CD	170	585	06/07/21	08/05/21			Online	M. Stein	9
627879	CD	170	586	06/07/21	08/05/21			Online	M. Galindo	9
632535	CD	170	587	06/14/21	07/29/21			Online	J. Sabas	7

Add Code	Sect. #	Start Date	End Date	Time	Days	Room	Location	Instructor Name	# of Weeks	
CD 172	CURRICULUM FOR INFANTS AND TODDLERS [D; CSU]						3 Units			
Recommended Preparation: RDG 158 or equivalent or through the Southwestern College multiple measures placement processes.										
627881	CD	172	80	06/14/21	07/29/21	5:00-8:50 PM (Lec)	MW	Remote	A. Rodriguez	7
CD 173	DEVELOPMENT OF INFANTS AND TODDLERS						3 Units			
Recommended Preparation: CD 170 or equivalent.										
627882	CD	173	580	06/07/21	08/05/21			Online	A. Rodriguez	9
CD 175	NUTRITION, HEALTH, AND SAFETY FOR CHILDREN [D; CSU]						3 Units	\$30.00		
632536	CD	175	580	06/14/21	07/29/21			Online	M. Stein	7
CD 275	ART FOR CHILDREN [D; CSU]						3 Units	\$15.00		
Recommended Preparation: RDG 158 or equivalent or through the Southwestern College multiple measures placement processes.										
633190	CD	275	580	06/07/21	08/05/21			Online	M. Jacobs	9
CD 284	CHILD, FAMILY, AND COMMUNITY [D; CSU; UC]						3 Units			
Recommended Preparation: CD 170 or equivalent.										
627884	CD	284	580	06/07/21	08/05/21			Online	M. Jacobs	9
CD 282A	CHILD DEVELOPMENT FIELD PRACTICUM [D; CSU]						3 Units			
Prerequisite: CD 170, 180, and 181 or equivalent.										
633206	CD	282A	680	06/07/21	08/12/21	2:30-3:20 PM (Lec)	T	Remote	J. Sabas	10
				06/07/21	08/12/21	3:30-5:20 PM (Lab)	Th	Remote	J. Sabas	10
<i>This is a hybrid course and includes both synchronous time via zoom as well as asynchronous time online via Canvas. Class has limited enrollment. We are accepting students who require the course for graduation or employment purposes. Please contact Lisa Rodriguez at lrodriguez@swccd.edu or call the San Ysidro Higher Education Center at 619-216-6790.</i>										

FILM TELEVISION AND MEDIA ARTS

FTMA 101	FUNDAMENTALS IN CAMERA, LIGHTING, AND SOUND [D; CSU; UC]						3 Units	\$20.00		
628169	FTMA	101	01	06/14/21	08/05/21	8:35-9:55 AM (Lec)	TWTh	Remote	M. Sisson	8
				06/14/21	08/05/21	10:05-12:10 PM (Lab)	TWTh	Remote	M. Sisson	8
FTMA 290	PROFESSIONAL MEDIA WORK EXPERIENCE I [D; CSU]						4 Units			
Limitation on Enrollment: Declared Film, Television, and Media Arts major. Recommended Concurrent Enrollment: Enrollment in one other class directly related to the Film, Television, and Media Arts major in order to apply learned theory in a practical hands-on setting through an internship class.										
628171	FTMA	290	01	06/07/21	08/05/21	TBA		Remote	M. Sisson	9
FTMA 291	PROFESSIONAL MEDIA WORK EXPERIENCE II [D; CSU]						4 Units			
Prerequisite: FTMA 290 or equivalent. Limitation on Enrollment: Declared Film, Television, and Media Arts major. Recommended Concurrent Enrollment: Enrollment in one other class directly related to the Film, Television, and Media Arts major in order to apply learned theory in a practical hands-on setting through an internship class.										
628172	FTMA	291	01	06/07/21	08/05/21	TBA		Remote	M. Sisson	9
FTMA 292	PROFESSIONAL MEDIA WORK EXPERIENCE III [D; CSU]						4 Units			
Prerequisite: FTMA 291 or equivalent. Limitation on Enrollment: Declared Film, Television, and Media Arts major. Recommended Concurrent Enrollment: Enrollment in one other class directly related to the Film, Television, and Media Arts major in order to apply learned theory in a practical hands-on setting through an internship class.										
628173	FTMA	292	01	06/07/21	08/05/21	TBA		Remote	M. Sisson	9
FTMA 293	PROFESSIONAL MEDIA WORK EXPERIENCE IV [D; CSU]						4 Units			
Prerequisite: FTMA 292 or equivalent. Limitation on Enrollment: Declared Film, Television, and Media Arts major. Recommended Concurrent Enrollment: Enrollment in one other class directly related to the Film, Television, and Media Arts major in order to apply learned theory in a practical hands-on setting through an internship class.										
628174	FTMA	293	01	06/07/21	08/05/21	TBA		Remote	M. Sisson	9

Add Code	Sect. #	Start Date	End Date	Time	Days	Room	Location	Instructor Name	# of Weeks
----------	---------	------------	----------	------	------	------	----------	-----------------	------------

FIRE SCIENCE

FS 10		PROFESSIONAL SKILLS FOR EMPLOYMENT IN THE FIRE SERVICE [D]					3 Units			
Prerequisite: ENGL 115 or RDG 158 and MATH 60 or equivalent or through the Southwestern College multiple measures placement processes.										
629753	FS	10	301	06/14/21	08/05/21	TBA	Remote	Staff		8
				06/14/21	08/05/21	10:00-11:30 AM (Lab)	MTh	Remote	Staff	8
<i>Class to meet in person for lab portion at the Higher Education Center at Otay Mesa. Dates to be determined.</i>										

FRENCH

FREN 101		ELEMENTARY FRENCH I [D; CSU; UC]					5 Units			
633382	FREN	101	501	06/07/21	07/15/21		Online	M. Alvarado Ramirez		6

GEOGRAPHY

GEOG 100		INTRODUCTION TO GEOGRAPHY---PHYSICAL ELEMENTS [D; CSU; UC; C-ID GEOG 110]					3 Units			
Recommended Preparation: RDG 56 or equivalent or through the Southwestern College multiple measures placement processes										
628176	GEOG	100	501	06/14/21	08/05/21		Online	K. Yanow		8
633196	GEOG	100	502	06/14/21	08/05/21		Online	B. Bas		8
628177	GEOG	100	503	06/14/21	08/05/21		Online	K. Yanow		8
628178	GEOG	100	505	06/14/21	08/05/21		Online	K. Yanow		8

GEOG 101		PHYSICAL GEOGRAPHY LABORATORY					1 Unit			
Recommended Concurrent Enrollment: GEOG 100.										
628179	GEOG	101	01	06/14/21	08/05/21	12:00-1:25 PM (Lab)	MTWTh	Remote	B. Bas	8

GEOLOGY

GEOL 100		PRINCIPLES OF GEOLOGY [D; CSU; UC; C-ID GEOL 100]					3 Units			
Recommended Preparation: RDG 158 or equivalent or through the Southwestern College multiple measures placement processes.										
633197	GEOL	100	501	06/14/21	08/05/21		Online	B. Bas		8

GEOL 104		INTRODUCTION TO EARTH SCIENCE [D; CSU; UC; C-ID GEOL 120]					3 Units			
Recommended Preparation: RDG 158 or equivalent or through the Southwestern College multiple measures placement processes.										
628181	GEOL	104	501	06/14/21	08/05/21		Online	K. Yanow		8

HEALTH

HLTH 101		PRINCIPLES OF HEALTHFUL LIVING [D; CSU; UC]					3 Units			
Recommended Preparation: RDG 158 or equivalent or through the Southwestern College multiple measures placement processes.										
628199	HLTH	101	01	06/07/21	07/15/21	8:00-10:05 AM (Lec)	MTWTh	Remote	M. Tont	6
628200	HLTH	101	03	06/14/21	07/22/21	10:30-12:35 PM (Lec)	MTWTh	Remote	D. Agbede	6
628202	HLTH	101	501	06/14/21	07/22/21			Online	D. Monarrez	6
628203	HLTH	101	502	06/21/21	07/29/21			Online	M. Meehan	6
628204	HLTH	101	503	06/07/21	07/15/21			Online	A. Rock	6
628205	HLTH	101	504	06/07/21	07/15/21			Online	A. Hazard	6
628206	HLTH	101	505	06/07/21	07/15/21			Online	M. Farha	6
632607	HLTH	101	506	06/21/21	07/29/21			Online	J. Petterson	6
633404	HLTH	101	507	06/07/21	07/01/21			Online	M. Meral	4
633405	HLTH	101	508	06/07/21	07/01/21			Online	L. Ratto	4
632491	HLTH	101	570	06/07/21	08/05/21			Online	Staff	9
633390	HLTH	101	CB01	06/07/21	07/01/21	8:50-12:00 PM (Lec)	MTWTh	Remote	Staff	4

Add Code		Sect. #	Start Date	End Date	Time	Days	Room	Location	Instructor Name	# of Weeks	
633391	HLTH	101	CB02	06/07/21	07/01/21	8:50-12:00 PM (Lec)	MTWTh	Remote	E. Lee	4	
<i>This is a California College and Career Access Pathways (CCAP) - course, only open to High School students. If you are a High School student and would like to take this course, please contact your High School Counselor. For more information, please email the Outreach Department at outreach@swccd.edu.</i>											
633393	HLTH	101	CB03	06/07/21	07/01/21	8:50-12:00 PM (Lec)	MTWTh	Remote	Staff	4	
<i>This is a California College and Career Access Pathways (CCAP) - course, only open to High School students. If you are a High School student and would like to take this course, please contact your High School Counselor. For more information, please email the Outreach Department at outreach@swccd.edu.</i>											
HLTH 110		FIRST RESPONDER [D; CSU]						3 Units			
628211	HLTH	110	01	06/14/21	07/29/21	10:30-11:35 AM (Lec)	MTWTh	Remote	Staff	7	
				06/14/21	07/29/21	11:45-1:35 PM (Lab)	MTWTh	Remote	Staff	7	
HLTH 116		WOMEN'S HEALTH AND WELL-BEING [D; CSU; UC]						3 Units			
Recommended Preparation: RDG 158 or equivalent or through the Southwestern College multiple measures placement processes.											
628212	HLTH	116	01	06/14/21	07/29/21	8:25-10:15 AM (Lec)	MTWTh	Remote	M. Smith	7	
HLTH 204		FUNDAMENTALS OF NUTRITION [D; CSU; UC; C-ID NUTR 110]						3 Units			
Recommended Preparation: RDG 158 or equivalent or through the Southwestern College multiple measures placement processes.											
628215	HLTH	204	501	06/14/21	07/22/21			Online	D. Monarrez	6	
628216	HLTH	204	502	06/21/21	07/29/21			Online	J. Harper	6	
628217	HLTH	204	503	06/07/21	07/15/21			Online	T. Pfister	6	
632609	HLTH	204	504	06/07/21	07/15/21			Online	C. Soto	6	
632610	HLTH	204	505	06/14/21	07/22/21			Online	W. Hileman	6	

HISTORY

HIST 100		AMERICAN CIVILIZATION I [D; CSU; UC; C-ID HIST 130]						3 Units			
Recommended Preparation: RDG 158 or the equivalent skill level as determined by the Southwestern College Reading Assessment or equivalent.											
628182	HIST	100	01	06/07/21	08/05/21	9:00-10:15 AM (Lec)	MTWTh	Remote	G. Young	9	
628184	HIST	100	501	06/07/21	08/05/21			Online	E. Purcell	9	
628185	HIST	100	502	06/07/21	08/05/21			Online	A. Leon	9	
628186	HIST	100	503	06/14/21	07/29/21			Online	B. Harris	7	
628187	HIST	100	504	06/07/21	07/29/21			Online	Z. Cuddy	8	
632505	HIST	100	570	06/21/21	08/05/21			Online	S. Jacobs	7	
632548	HIST	100	580	06/14/21	07/29/21			Online	B. Harris	7	
This is a Correspondence Course for currently incarcerated students at RJD only. For information, please contact Patrice Milkovich at pmilkovich@swccd.edu.											
HIST 101		AMERICAN CIVILIZATION II [D; CSU; UC; C-ID HIST 140]						3 Units			
Recommended Preparation: RDG 158 or the equivalent skill level as determined by the Southwestern College Reading Assessment or equivalent.											
628191	HIST	101	501	06/07/21	08/05/21			Online	M. Smith	9	
628192	HIST	101	502	06/07/21	08/05/21			Online	O. Canedo	9	
HIST 106		WORLD HISTORY I [D; CSU; UC; C-ID HIST 150]						3 Units			
Recommended Preparation: RDG 158 or equivalent or through the Southwestern College multiple measures placement processes.											
633389	HIST	106	501	06/14/21	07/29/21			Online	L. Ryan	7	
HIST 141		MEXICAN-AMERICAN HISTORY I [D; CSU; UC]						3 Units			
Recommended Preparation: RDG 158 or equivalent or through the Southwestern College multiple measures placement processes.											
628194	HIST	141	01	06/14/21	07/29/21	12:30-2:20 PM (Lec)	MTWTh	Remote	G. Rios	7	
628195	HIST	141	501	06/07/21	08/05/21			Online	Staff	9	
628196	HIST	141	502	06/07/21	08/05/21			Online	Staff	9	
HIST 142		MEXICAN-AMERICAN HISTORY II [D; CSU; UC]						3 Units			
Recommended Preparation: RDG 158 or equivalent or through the Southwestern College multiple measures placement processes.											
628197	HIST	142	01	06/14/21	07/29/21	10:00-11:50 AM (Lec)	MTWTh	Remote	G. Rios	7	
628198	HIST	142	501	06/07/21	08/05/21			Online	F. Fuentes	9	

Add Code	Sect. #	Start Date	End Date	Time	Days	Room	Location	Instructor Name	# of Weeks
----------	---------	------------	----------	------	------	------	----------	-----------------	------------

HUMANITIES

HUM 104		INTRODUCTION TO HUMANITIES: ARTS AND IDEAS [D; CSU; UC]					3 Units			
Recommended Preparation: RDG 158 or equivalent or through the Southwestern College multiple measures placement processes.										
628218	HUM	104	501	06/07/21	08/05/21		Online	R. Ulyate		9
628219	HUM	104	502	06/07/21	08/05/21		Online	R. Ulyate		9

ITALIAN

ITAL 101		ELEMENTARY ITALIAN I [D; CSU; UC]					5 Units			
628220	ITAL	101	01	06/07/21	07/15/21	12:00-3:35 PM (Lec)	MTWTh	Remote	M. Schroeder	6

JAPANESE

JPN 101		BEGINNING JAPANESE I [D; CSU; UC]					5 Units			
628222	JPN	101	01	06/07/21	07/15/21	12:00-3:35 PM (Lec)	MTWTh	Remote	A. Gervais	6

JOURNALISM

JOUR 101		INTRODUCTION TO MASS COMMUNICATION AND SOCIETY [D; CSU; UC; C-ID JOUR 100]					3 Units			
628221	JOUR	101	01	06/07/21	07/01/21	9:00-12:10 PM (Lec)	MTWTh	Remote	M. Branscomb II	4

LEADERSHIP

LDR 153		WORK AND LIFE BALANCE FOR SUCCESS [D; CSU]					2 Units			
Recommended Preparation: RDG 158 or the equivalent skill level as determined by the Southwestern College Reading Assessment or equivalent.										
628224	LDR	153	501	06/21/21	08/05/21		Online	S. Duver		7

LDR 155		STRATEGIC PLANNING AND SUSTAINABILITY [D]					3 Units			
Recommended Preparation: RDG 158 or the equivalent skill level as determined by the Southwestern College Reading Assessment or equivalent.										
628225	LDR	155	501	06/07/21	08/05/21		Online	T. Salameh		9

LDR 156		MICROFINANCE AND SUSTAINABLE DEVELOPMENT [D]					3 Units			
Recommended Preparation: RDG 158 or the equivalent skill level as determined by the Southwestern College Reading Assessment or equivalent.										
632622	LDR	156	501	06/07/21	08/05/21		Online	Staff		9
LEGAL										

LEGL 255		INTRODUCTION TO LAW AND LEGAL TERMINOLOGY [D; CSU]					3 Units			
Recommended Preparation: RDG 158 or the equivalent skill level as determined by the Southwestern College Reading Assessment or equivalent.										
628226	LEGL	255	501	06/07/21	08/05/21		Online	D. Adjadj		9

LEGL 290		LEGAL COOPERATIVE WORK EXPERIENCE I [D; CSU]					3 Units			
Corequisite: LEGL 225 (may be taken previously). Limitation on Enrollment: Declared Paralegal studies or Legal Office Professional major. Recommended Concurrent Enrollment: Enrollment in one other class directly related to the Paralegal Studies or Legal Office Professional major in order to apply learned theory in a practical hands-on setting through an internship class.										
633378	LEGL	290	501	06/07/21	08/05/21		Online	N. Maddah		9
<i>Meetings/consultations with instructor required. Please contact instructor for more information.</i>										

Add Code	Sect. #	Start Date	End Date	Time	Days	Room	Location	Instructor Name	# of Weeks
LEGL 291 LEGAL COOPERATIVE WORK EXPERIENCE II [D; CSU] 3 Units									
Prerequisite: LEGL 290 or equivalent. Limitation on Enrollment: Declared Paralegal studies or Legal Office Professional major. Recommended Concurrent Enrollment: Enrollment in one other class directly related to the Paralegal Studies or Legal Office Professional major in order to apply learned theory in a practical hands-on setting through an internship class.									
633377	LEGL 291 501	06/07/21	08/05/21				Online	N. Maddah	9
<i>Meetings/consultations with instructor required. Please contact instructor for more information.</i>									
LEGL 292 LEGAL COOPERATIVE WORK EXPERIENCE III [D; CSU] 3 Units									
Prerequisite: LEGL 291 or equivalent. Limitation on Enrollment: Declared Paralegal studies or Legal Office Professional major. Recommended Concurrent Enrollment: Enrollment in one other class directly related to the Paralegal Studies or Legal Office Professional major in order to apply learned theory in a practical hands-on setting through an internship class.									
633376	LEGL 292 501	06/07/21	08/05/21				Online	N. Maddah	9
<i>Meetings/consultations with instructor required. Please contact instructor for more information.</i>									
LEGL 293 LEGAL COOPERATIVE WORK EXPERIENCE IV [D; CSU] 3 Units									
Prerequisite: LEGL 292 or equivalent. Limitation on Enrollment: Declared Paralegal studies or Legal Office Professional major. Recommended Concurrent Enrollment: Enrollment in one other class directly related to the Paralegal Studies or Legal Office Professional major in order to apply learned theory in a practical hands-on setting through an internship class.									
633375	LEGL 293 501	06/07/21	08/05/21				Online	N. Maddah	9
<i>Meetings/consultations with instructor required. Please contact instructor for more information.</i>									

LIBRARY

LIB 110 SIMPLIFIED RESEARCH: PRINT AND ELECTRONIC [D; CSU; UC] 1 Unit									
Recommended Preparation: RDG 158 or the equivalent skill level as determined by the Southwestern College Reading Assessment or equivalent.									
628229	LIB 110 601	06/14/21	08/05/21	8:45-9:35 AM (Lec)	T	64-244	Chula Vista Campus	Staff	8
		06/14/21	08/05/21	9:35-10:05 AM (Lab)	T	64-244	Chula Vista Campus	Staff	8
<i>This is a Hybrid course. On-campus meetings and online participation are required. Additional 2.4 hours or 2 hours 10 mins to be arranged.</i>									

MATHEMATICS

MATH 35 PRE-ALGEBRA [ND] 4 Units									
Recommended Preparation: RDG 56 or equivalent or through the Southwestern College multiple measures placement processes.									
628269	MATH 35 30	06/14/21	07/29/21	2:00-4:20 PM (Lec)	MTWTh		Remote	M. Safaee	7
MATH 45 ELEMENTARY ALGEBRA [ND] 4 Units									
Prerequisite: MATH 35 or equivalent or through the Southwestern College multiple measures placement processes. Recommended Preparation: RDG 56 or equivalent or through the Southwestern College multiple measures placement processes.									
628271	MATH 45 60	06/14/21	07/29/21	5:00-7:20 PM (Lec)	MTWTh		Remote	K. Perez	7
628272	MATH 45 70	06/07/21	08/05/21	9:00-10:50 AM (Lec)	MTWTh		Remote	S. Medin	9
628273	MATH 45 80	06/14/21	07/29/21	8:00-11:10 AM (Lec)	TWTh		Remote	W. Ha	7
MATH 60 INTERMEDIATE ALGEBRA I (FOR LIBERAL ARTS MAJORS) [D] 4 Units									
Recommended Preparation: MATH 45 and RDG 56 or equivalent or through the Southwestern College multiple measures placement processes.									
628275	MATH 60 05	06/14/21	07/29/21	8:00-10:20 AM (Lec)	MTWTh		Remote	R. Scott	7
628276	MATH 60 07	06/14/21	07/29/21	10:45-1:05 PM (Lec)	MTWTh		Remote	A. Barekat	7
628279	MATH 60 70	06/07/21	08/05/21	9:00-10:50 AM (Lec)	MTWTh		Remote	Y. Yslas-Thompson	9
628280	MATH 60 71	06/07/21	08/05/21	11:00-12:50 PM (Lec)	MTWTh		Remote	V. Phung	9
628281	MATH 60 80	06/14/21	07/29/21	8:30-10:50 AM (Lec)	MTWTh		Remote	T. Kitchev	7
628282	MATH 60 82	06/14/21	07/29/21	6:00-8:20 PM (Lec)	MTWTh		Remote	D. Tran	7
633340	MATH 60 501	06/07/21	07/29/21				Online	L. Louie	8
633341	MATH 60 609	06/14/21	07/29/21	10:45-1:05 PM (Lec)	TTh		Remote	C. De la Lama	7
<i>HYBRID: Class will meet remotely, via zoom, on TTh from 10:45 AM-1:05 PM. Additional hours of instruction to be completed online.</i>									
633348	MATH 60 632	06/14/21	07/29/21	2:00-3:05 PM (Lec)	MTh		Remote	Z. Salehpoor	7
<i>HYBRID: Class will meet remotely, via zoom, on Monday and Thursday from 2:00-3:05 PM. Additional hours of instruction to be completed online.</i>									

Add Code	Sect. #	Start Date	End Date	Time	Days	Room	Location	Instructor Name	# of Weeks	
MATH 62	INTERMEDIATE ALGEBRA II (STEM/BUS) [D]							2 Units		
Prerequisite: MATH 60.										
632550	MATH 62	80	06/14/21	07/29/21	8:30-10:50 AM (Lec)	TTh	Remote	A. Ortega-Manriquez	7	
MATH 72	INTERMEDIATE ALGEBRA I AND II (STEM/BUS) [D]							6 Units		
Prerequisite: MATH 45 or MATH 48. This requisite may be satisfied through: (1) the Southwestern College placement process or (2) concurrent enrollment in MATH 81 when placement requires additional co-requisite support or (3) completion of a requisite course at SWC or an equivalent course from another accredited institution. Recommended Preparation: RDG 56 or equivalent or through the Southwestern College multiple measures placement processes.										
628284	MATH 72	01	06/07/21	08/05/21	8:30-11:20 AM (Lec)	MTWTh	Remote	P. Diwa	9	
628285	MATH 72	05	06/07/21	08/05/21	12:00-2:50 PM (Lec)	MTWTh	Remote	P. Diwa	9	
628286	MATH 72	07	06/07/21	08/05/21	10:45-1:35 PM (Lec)	MTWTh	Remote	J. Perez	9	
628287	MATH 72	30	06/07/21	08/05/21	2:00-4:50 PM (Lec)	MTWTh	Remote	C. Villanueva Huerta	9	
MATH 100	MATHEMATICS FOR GENERAL EDUCATION MAJORS [D; CSU]							3 Units		
Prerequisite: MATH 60. This requisite may be satisfied through: (1) the Southwestern College placement process or (2) concurrent enrollment in MATH 82 when placement requires additional co-requisite support or (3) completion of the requisite course at SWC or an equivalent course from another accredited institution. Recommended Preparation: RDG 158 or equivalent or through the Southwestern College multiple measures placement processes.										
628235	MATH 100	01	06/14/21	07/29/21	8:00-9:50 AM (Lec)	MTWTh	Remote	S. Youssef	7	
628236	MATH 100	30	06/14/21	07/29/21	2:00-3:50 PM (Lec)	MTWTh	Remote	S. Halperin	7	
632551	MATH 100	86	06/14/21	07/29/21	5:30-7:50 PM (Lec)	TWTh	Remote	S. Halperin	7	
MATH 101	COLLEGE ALGEBRA [D; CSU; UC]							3 Units		
Prerequisite: MATH 72 or MATH 62 or equivalent or through the Southwestern College multiple measures placement processes. This requisite may be satisfied through: (1) the Southwestern College placement process or (2) concurrent enrollment in MATH 83 when placement requires additional co-requisite support or (3) completion of a requisite course at SWC or an equivalent course from another accredited institution. Recommended Preparation: RDG 158 or equivalent or through the Southwestern College multiple measures placement processes.										
628237	MATH 101	01	06/14/21	07/29/21	8:00-9:50 AM (Lec)	MTWTh	Remote	S. Ahmed-Garay	7	
628238	MATH 101	03	06/14/21	07/29/21	10:30-12:20 PM (Lec)	MTWTh	Remote	S. Ahmed-Garay	7	
628239	MATH 101	70	06/07/21	08/05/21	9:00-11:50 AM (Lec)	TTh	Remote	J. Nevarez	9	
MATH 104	TRIGONOMETRY [D; CSU]							3 Units		
Prerequisite: MATH 72 or MATH 62 or equivalent or through the Southwestern College multiple measures placement processes. This requisite may be satisfied through: (1) the Southwestern College placement process or (2) concurrent enrollment in MATH 86 when placement requires additional co-requisite support or (3) completion of a requisite course at SWC or an equivalent course from another accredited institution. Recommended Preparation: RDG 158 or equivalent or through the Southwestern College multiple measures placement processes.										
628240	MATH 104	01	06/14/21	07/29/21	10:30-12:20 PM (Lec)	MTWTh	Remote	G. Netro	7	
628241	MATH 104	30	06/14/21	07/29/21	1:30-3:20 PM (Lec)	MTWTh	Remote	S. Kim	7	
MATH 119	ELEMENTARY STATISTICS [D; CSU; UC; C-ID MATH 110]							4 Units		
Prerequisite: MATH 72 or MATH 62 or equivalent or through the Southwestern College multiple measures placement processes. This requisite may be satisfied through: (1) the Southwestern College placement process or (2) concurrent enrollment in MATH 84 when placement requires additional co-requisite support or (3) completion of a requisite course at SWC or an equivalent course from another accredited institution. Recommended Preparation: RDG 158 or equivalent or through the Southwestern College multiple measures placement processes.										
628245	MATH 119	30	06/14/21	07/29/21	2:00-4:20 PM (Lec)	MTWTh	Remote	F. Kaiser	7	
628246	MATH 119	60	06/14/21	07/29/21	5:00-7:20 PM (Lec)	MTWTh	Remote	A. Medin	7	
628247	MATH 119	70	06/14/21	07/29/21	9:00-11:20 AM (Lec)	MTWTh	Remote	N. Quan	7	
632594	MATH 119	301	06/14/21	07/29/21	8:00-11:10 AM (Lec)	TWTh	Remote	M. Safaae	7	
633343	MATH 119	601	06/14/21	07/29/21	8:00-9:15 AM (Lec)	MW	Remote	B. Smith	7	
<i>HYBRID: Class will meet remotely, via zoom, on Monday and Wednesday from 8:00-9:15 AM. Additional hours of instruction to be completed online.</i>										
633344	MATH 119	603	06/14/21	07/29/21	10:45-12:00 PM (Lec)	MW	Remote	B. Smith	7	
<i>HYBRID: Class will meet remotely, via zoom, on Monday and Wednesday from 10:45 AM - 12:00 PM. Additional hours of instruction to be completed online.</i>										
MATH 120	CALCULUS FOR BUSINESS ANALYSIS [D; CSU; UC; C-ID MATH 140]							4 Units		
Prerequisite: MATH 72 or MATH 62 or equivalent or through the Southwestern College multiple measures placement processes. This requisite may be satisfied through: (1) the Southwestern College placement process or (2) concurrent enrollment in MATH 85 when placement requires additional co-requisite support or (3) completion of a requisite course at SWC or an equivalent course from another accredited institution. Recommended Preparation: ACCT 101 or equivalent; RDG 158 or equivalent or through the Southwestern College multiple measures placement processes.										
628249	MATH 120	32	06/14/21	07/29/21	1:30-3:50 PM (Lec)	MTWTh	Remote	A. Ortega-Manriquez	7	
633345	MATH 120	530	06/14/21	07/29/21			Online	Y. Francis	7	

Add Code	Sect. #	Start Date	End Date	Time	Days	Room	Location	Instructor Name	# of Weeks	
MATH 121 APPLIED CALCULUS I [D; CSU; UC]									3 Units	
Prerequisite: MATH 72 or MATH 62 or equivalent or through the Southwestern College multiple measures placement processes; This requisite may be satisfied through: (1) the Southwestern College placement process or (2) concurrent enrollment in MATH 85 when placement requires additional co-requisite support or (3) completion of a requisite course at SWC or an equivalent course from another accredited institution. Recommended Preparation: RDG 158 or equivalent or through the Southwestern College multiple measures placement processes.										
628250	MATH 121 01	06/14/21	07/29/21	8:00-9:50 AM (Lec)	MTWTh		Remote	B. Cebecioglu	7	
628251	MATH 121 60	06/14/21	07/29/21	5:00-6:50 PM (Lec)	MTWTh		Remote	S. Yoseph	7	
628252	MATH 121 80	06/14/21	07/29/21	8:00-10:20 AM (Lec)	TWTh		Remote	S. Kim	7	
MATH 122 APPLIED CALCULUS II [D; CSU; UC]									3 Units	
Prerequisite: MATH 121 or equivalent. Recommended Preparation: RDG 158 or the equivalent skill level as determined by the Southwestern College Reading Assessment or equivalent.										
628254	MATH 122 01	06/14/21	07/29/21	10:45-12:35 PM (Lec)	MTWTh		Remote	B. Cebecioglu	7	
MATH 130 INTRODUCTION TO COMPUTER PROGRAMMING									3 Units	
632597	MATH 130 02	06/14/21	07/29/21	1:00-2:05 PM (Lec)	MTWTh		Remote	Staff	7	
		06/14/21	07/29/21	2:15-4:05 PM (Lab)	MTWTh		Remote	Staff	7	
633199	MATH 130 601	06/14/21	07/29/21	10:00-11:50 AM (Lec)	MW		Remote	Staff	7	
		06/14/21	07/29/21	10:00-11:50 AM (Lab)	TTh		Remote	Staff	7	
<i>HYBRID: Class will meet remotely, via zoom, on MTWTh from 10:00 AM - 11:50 AM. Additional hours of instruction to be completed online.</i>										
MATH 230 COMPUTER ORGANIZATION AND ARCHITECTURE									3 Units	
632600	MATH 230 01	06/14/21	07/29/21	9:00-10:05 AM (Lec)	MTWTh		Remote	Staff	7	
		06/14/21	07/29/21	10:15-12:05 PM (Lab)	MTWTh		Remote	Staff	7	
MATH 244 PRE-CALCULUS WITH TRIGONOMETRY [D; CSU; UC]									6 Units	
Prerequisite: MATH 62 or MATH 72 or equivalent or through the Southwestern College multiple measures placement processes. Recommended Preparation: RDG 158 or equivalent or through the Southwestern College multiple measures placement processes.										
628257	MATH 244 01	06/07/21	08/05/21	7:30-10:20 AM (Lec)	MTWTh		Remote	M. Moody	9	
628258	MATH 244 03	06/07/21	08/05/21	10:45-1:35 PM (Lec)	MTWTh		Remote	M. Moody	9	
MATH 250 ANALYTIC GEOMETRY AND CALCULUS I [D; CSU; UC; C-ID MATH 211]									5 Units	
Prerequisite: MATH 244 or equivalent; or MATH 101 and 104 or equivalent or through the Southwestern College multiple measures placement processes.										
628259	MATH 250 01	06/14/21	08/05/21	7:30-10:05 AM (Lec)	MTWTh		Remote	A. Juden	8	
628260	MATH 250 03	06/14/21	08/05/21	10:30-1:05 PM (Lec)	MTWTh		Remote	B. Bolton	8	
628261	MATH 250 05	06/14/21	08/05/21	1:30-4:05 PM (Lec)	MTWTh		Remote	P. Herrera	8	
628262	MATH 250 60	06/14/21	08/05/21	5:00-7:35 PM (Lec)	MTWTh		Remote	P. Herrera	8	
MATH 251 ANALYTIC GEOMETRY AND CALCULUS II [D; CSU; UC; C-ID MATH 221]									4 Units	
Prerequisite: MATH 250 or equivalent.										
628263	MATH 251 01	06/14/21	08/05/21	10:45-12:50 PM (Lec)	MTWTh		Remote	S. Sikder	8	
628264	MATH 251 03	06/14/21	08/05/21	1:15-3:20 PM (Lec)	MTWTh		Remote	S. Sikder	8	
628265	MATH 251 30	06/14/21	08/05/21	2:25-4:30 PM (Lec)	MTWTh		Remote	B. Bolton	8	
MATH 252 ANALYTIC GEOMETRY AND CALCULUS III [D; CSU; UC; C-ID MATH 230]									4 Units	
Prerequisite: MATH 251 or equivalent. Recommended Preparation: RDG 158 or equivalent or through the Southwestern College multiple measures placement processes.										
628266	MATH 252 01	06/14/21	08/05/21	8:00-10:05 AM (Lec)	MTWTh		Remote	K. Cliffe	8	
MATH 253 INTRODUCTION TO DIFFERENTIAL EQUATIONS [D; CSU; UC; C-ID MATH 240]									3 Units	
Prerequisite: MATH 251 or equivalent.										
628267	MATH 253 05	06/14/21	07/29/21	2:15-4:05 PM (Lec)	MTWTh		Remote	M. Lines	7	
MATH 254 INTRODUCTION TO LINEAR ALGEBRA [D; CSU; UC; C-ID MATH 250]									3 Units	
Prerequisite: MATH 251 or equivalent.										
628268	MATH 254 30	06/14/21	07/29/21	10:45-12:35 PM (Lec)	MTWTh		Remote	M. Lines	7	
MATH 265 DISCRETE STRUCTURES [D; CSU; UC; C-ID COMP 152]									3 Units	
Prerequisite: MATH 122 or MATH 251 or equivalent; MATH 130 or equivalent.										
633346	MATH 265 501	06/14/21	07/29/21				Online	Y. Francis	7	

Add Code	Sect. #	Start Date	End Date	Time	Days	Room	Location	Instructor Name	# of Weeks
----------	---------	------------	----------	------	------	------	----------	-----------------	------------

MEDICAL LABORATORY TECHNOLOGY

MLT 112	CLINICAL CHEMISTRY PRACTICUM [D; CSU]							4 Units		
Corequisite: MLT 130. Prerequisite: MLT 111 and MLT 111L or equivalent. Recommended Preparation: RDG 158 or equivalent or through the Southwestern College multiple measures placement processes.										
628296	MLT	112	E1	05/17/21	06/22/21	7:00-3:05 PM (Lab)	MTWThF	Remote	Staff	6
<i>The class will include in person instruction. Please contact instructor for location.</i>										

MLT 130	CLINICAL IMMUNOHEMATOLOGY [D; CSU]							3 Units		
Corequisite: MLT 112 and MLT 130L. Prerequisite: MLT 100, MLT 100L, MLT 132, and MLT 132L, or equivalent. Recommended Preparation: RDG 158 or equivalent or through the Southwestern College multiple measures placement processes.										
628297	MLT	130	76	06/28/21	08/05/21	4:30-6:35 PM (Lec)	MTWTh	Remote	J. Stephan	6
<i>The class will include in person instruction and will meet at National City room #7205. Please contact instructor for more information.</i>										

MLT 130L	CLINICAL IMMUNOHEMATOLOGY LAB [D; CSU]							1 Unit		
Corequisite: MLT 130. Recommended Preparation: RDG 158 or equivalent or through the Southwestern College multiple measures placement processes.										
628298	MLT	130L	76	06/28/21	08/05/21	6:50-8:55 PM (Lab)	MTWTh	Remote	J. Stephan	6
<i>The class will include in person instruction and will meet at National City room #7135. Please contact instructor for more information.</i>										

MEDICAL OFFICE PROFESSIONAL

MEDOP 20	HEALTH CARE ESSENTIALS [D]							3 Units		
Recommended Preparation: RDG 158 or equivalent or through the Southwestern College multiple measures placement processes; MATH 35 or equivalent or through the Southwestern College multiple measures placement processes; ENGL 71 or equivalent or through the Southwestern College multiple measures placement processes; BUS 70 or equivalent.										
628289	MEDOP 20	76		06/07/21	07/23/21	9:30-1:05 PM (Lec)	TTh	Remote	R. Pontecorvo	7
<i>The class will include in person instruction. Please contact instructor for location.</i>										

MEDOP 25	MEDICAL ASSISTING-CLINICAL PRACTICUM [D]							3 Units		
Prerequisite: MEDOP 135 or equivalent. Recommended Preparation: RDG 158 or equivalent or through the Southwestern College multiple measures placement processes; MATH 35 or equivalent or through the Southwestern College multiple measures placement processes; ENGL 71 or equivalent or through the Southwestern College multiple measures placement processes.										
628292	MEDOP 25	E1		06/07/21	08/05/21	TBA		Remote	N. Shukur	9
<i>18 hours to be scheduled each week OR 162 total maximum hours to be scheduled. The class will include in person instruction. Please contact instructor for location.</i>										

MEDOP 30	MEDICAL ASSISTING-ADMINISTRATIVE PRACTICUM [D]							3 Units		
Prerequisite: MEDOP 135 or equivalent. Recommended Preparation: RDG 158 or equivalent or through the Southwestern College multiple measures placement processes; MATH 35 or equivalent or through the Southwestern College multiple measures placement processes; ENGL 71 or equivalent or through the Southwestern College multiple measures placement processes; BUS 70 or equivalent.										
628293	MEDOP 30	E1		06/07/21	08/05/21	TBA		Remote	N. Shukur	9
<i>18 hours to be scheduled each week OR 162 total maximum hours to be scheduled. The class will include in person instruction. Please contact instructor for location.</i>										

MEDOP 35	MEDICAL ASSISTING-MEDICAL INSURANCE BILLING AND CODING PRACTICUM [D]							3 Units		
Prerequisite: MEDOP 135 or equivalent. Recommended Preparation: RDG 158 or equivalent or through the Southwestern College multiple measures placement processes; MATH 35 or equivalent or through the Southwestern College multiple measures placement processes; ENGL 71 or equivalent or through the Southwestern College multiple measures placement processes; BUS 70 or equivalent.										
628294	MEDOP 35	E1		06/07/21	08/05/21	TBA		Remote	V. Alexander	9
<i>18 hours to be scheduled each week OR 162 maximum total hours to be scheduled. The class will include in person instruction. Please contact instructor for location.</i>										

Add Code	Sect. #	Start Date	End Date	Time	Days	Room	Location	Instructor Name	# of Weeks
MEDOP 45 MEDICAL ASSISTING COMPREHENSIVE PRACTICUM [D] 4 Units									
Prerequisite: MEDOP 135 or equivalent. Recommended Preparation: RDG 158 or equivalent or through the Southwestern College multiple measures placement processes; MATH 35 or equivalent or through the Southwestern College multiple measures placement processes; ENGL 71 or equivalent or through the Southwestern College multiple measures placement processes; BUS 70 or equivalent.									
628295	MEDOP 45	E1	06/07/21	08/05/21	TBA		Remote	N. Shukur	9
<i>24 hours to be scheduled each week OR 216 maximum total hours to be scheduled. The class will include in person instruction. Please contact instructor for location.</i>									

MEDOP 230 MEDICAL TERMINOLOGY [D; CSU] 3 Units \$1.00									
Recommended Preparation: RDG 158 or equivalent or through the Southwestern College multiple measures placement processes.									
628290	MEDOP 230	570	06/07/21	07/22/21			Online	F. Penner	7
628291	MEDOP 230	571	06/07/21	07/22/21			Online	F. Penner	7

MEXICAN AMERICAN STUDIES

MAS 141 MEXICAN-AMERICAN HISTORY I [D; CSU; UC] 3 Units										
Recommended Preparation: RDG 158 or equivalent or through the Southwestern College multiple measures placement processes.										
628230	MAS	141	01	06/14/21	07/29/21	12:30-2:20 PM (Lec)	MTWTh	Remote	G. Rios	7
628231	MAS	141	501	06/07/21	08/05/21			Online	A. Gonzalez	9
628232	MAS	141	502	06/07/21	08/05/21			Online	A. Gonzalez	9

MAS 142 MEXICAN-AMERICAN HISTORY II [D; CSU; UC] 3 Units										
Recommended Preparation: RDG 158 or equivalent or through the Southwestern College multiple measures placement processes.										
628233	MAS	142	01	06/14/21	07/29/21	10:00-11:50 AM (Lec)	MTWTh	Remote	G. Rios	7
628234	MAS	142	501	06/07/21	08/05/21			Online	F. Fuentes	9

MUSIC

MUS 103 MUSICIANSHIP FOR GENERAL ELEMENTARY TEACHERS [D; CSU; C-ID MUS 110] 3 Units										
632546	MUS	103	686	06/14/21	07/29/21	10:00-11:50 AM (Lec)	TTh	Remote	T. Russell	7
				06/14/21	07/29/21	12:00-12:50 PM (Lab)	TTh	Remote	T. Russell	7
<i>This is a hybrid course which will meet remotely via zoom during the scheduled days and times but will also require an additional hours of asynchronous online work per week.</i>										

MUS 105 INTRODUCTION TO MUSIC [D; CSU; UC; C-ID MUS 100] 3 Units										
628303	MUS	105	501	06/07/21	08/05/21			Online	T. Burklund	9
628304	MUS	105	502	06/14/21	08/05/21			Online	W. Coe	8

MUS 106 INTRODUCTION TO JAZZ [D; CSU; UC] 3 Units										
632570	MUS	106	501	06/07/21	08/05/21			Online	T. Caschetta	9

MUS 137 BEGINNING GUITAR I [D; CSU; UC] 1 Unit										
633379	MUS	137	01	06/14/21	08/05/21	10:00-10:35 AM (Lec)	TWTh	Remote	J. Pastrana	8
				06/14/21	08/05/21	10:35-11:10 AM (Lab)	TWTh	Remote	J. Pastrana	8

PERSONAL DEVELOPMENT

PD 1 SPEECH LANGUAGE HEARING ASSESSMENT [ND] 0.5 Units										
628308	PD	1	S01	06/07/21	08/05/21	TBA		Remote	M. Mendoza	9
<i>Course is designed for students with disabilities Nine total maximum hours to be scheduled.</i>										

PD 9 ADULT LEARNING ASSESSMENT [ND] 0.5 Units										
628322	PD	9	S01	06/07/21	08/05/21	TBA		Remote	J. Gardea	9
<i>Course is designed for students with disabilities Nine total hours to be scheduled</i>										

Add Code	Sect. #	Start Date	End Date	Time	Days	Room	Location	Instructor Name	# of Weeks
PD 100	LIFELONG SUCCESS [D; CSU, UC]						3 Units		
628309 PD	100 01	06/14/21	07/29/21	10:30-12:20 PM (Lec)	MTWTh		Remote	J. Rose	7
628310 PD	100 S501	06/14/21	07/29/21				Online	M. Constein	7
		<i>Course is designed for students with disabilities.</i>							
PD 101	ORIENTATION TO COLLEGE [D; CSU]						1 Unit		
628314 PD	101 S01	06/14/21	06/24/21	10:30-12:35 PM (Lec)	MTWTh		Remote	J. Gardea	2
		<i>Course is designed for students with disabilities</i>							
PD 110	COLLEGE SUCCESS SKILLS [D; CSU]						3 Units		
632379 PD	110 S501	06/14/21	07/29/21				Online	B. Bass	7
		<i>Designed for students with disabilities.</i>							
PD 290	OCCUPATIONAL COOPERATIVE EDUCATION I [D; CSU]						4 Units		
Limitation on Enrollment: Declared Vocational Education major. Recommended Concurrent Enrollment: Enrollment in one other class directly related to the Vocational Education major in order to apply learned theory in a practical hands-on setting through an internship class.									
628318 PD	290 660	06/07/21	08/05/21	TBA			Remote	S. Finn	9
		<i>Time of class is To Be Arranged. Meetings/consultations with instructor required. Please contact instructor for more information.</i>							
PD 291	OCCUPATIONAL COOPERATIVE EDUCATION II [D; CSU]						4 Units		
Prerequisite: PD 290 or equivalent. Limitation on Enrollment: Declared Vocational Education major. Recommended Concurrent Enrollment: Enrollment in one other class directly related to the Vocational Education major in order to apply learned theory in a practical hands-on setting through an internship class.									
628319 PD	291 660	06/07/21	08/05/21	TBA			Remote	S. Finn	9
		<i>Time of class is To Be Arranged. Meetings/consultations with instructor required. Please contact instructor for more information..</i>							
PD 292	OCCUPATIONAL COOPERATIVE EDUCATION III [D; CSU]						4 Units		
Prerequisite: PD 291 or equivalent. Limitation on Enrollment: Declared Vocational Education major. Recommended Concurrent Enrollment: Enrollment in one other class directly related to the Vocational Education major in order to apply learned theory in a practical hands-on setting through an internship class.									
628320 PD	292 660	06/07/21	08/05/21	TBA			Remote	S. Finn	9
		<i>Time of class is To Be Arranged. Meetings/consultations with instructor required. Please contact instructor for more information.</i>							
PD 293	OCCUPATIONAL COOPERATIVE EDUCATION IV [D; CSU]						4 Units		
Prerequisite: PD 292 or equivalent. Limitation on Enrollment: Declared Vocational Education major. Recommended Concurrent Enrollment: Enrollment in one other class directly related to the Vocational Education major in order to apply learned theory in a practical hands-on setting through an internship class.									
628321 PD	293 660	06/07/21	08/05/21	TBA			Remote	S. Finn	9
		<i>Time of class is To Be Arranged. Meetings/consultations with instructor required. Please contact instructor for more information.</i>							
PD 100A	CAREER PLANNING: CAREER AND MAJOR SELECTION [D; CSU]						1 Unit		
Recommended Preparation: ENGL 71 or equivalent or through the Southwestern College multiple measures placement processes.									
628311 PD	100A 01	06/14/21	06/24/21	9:00-11:05 AM (Lec)	MTWTh		Remote	K. Corbisiero	2
628312 PD	100A 501	06/28/21	07/16/21				Online	K. Corbisiero	3
628313 PD	100A 502	06/14/21	06/28/21				Online	K. Corbisiero	3

PHILOSOPHY

PHIL 101	INTRODUCTION TO PHILOSOPHY [D; CSU; UC; C-ID PHIL 100]						3 Units		
Recommended Preparation: RDG 158 or equivalent or through the Southwestern College multiple measures placement processes.									
628323 PHIL	101 01	06/14/21	07/29/21	8:00-9:50 AM (Lec)	MTWTh		Remote	M. Wion	7
628324 PHIL	101 03	06/14/21	07/29/21	12:00-1:50 PM (Lec)	MTWTh		Remote	M. Wion	7
628325 PHIL	101 501	06/07/21	08/05/21				Online	A. Spike	9
628326 PHIL	101 502	06/07/21	08/05/21				Online	P. Grosse	9
628327 PHIL	101 503	06/07/21	08/05/21				Online	P. Grosse	9
628328 PHIL	101 504	06/14/21	08/05/21				Online	J. Moore	8
628329 PHIL	101 505	06/07/21	08/05/21				Online	J. Moore	9

Add Code		Sect. #	Start Date	End Date	Time	Days	Room	Location	Instructor Name	# of Weeks
632506	PHIL	101 570	06/21/21	08/05/21				Online	A. Spike	7
<i>This is a Correspondence Course for currently incarcerated students at RJD only. For information, please contact Patrice Milkovich at pmilkovich@swccd.edu.</i>										

PHIL 103 LOGIC AND CRITICAL THINKING [D; CSU; UC; C-ID PHIL 110] 3 Units

Prerequisite: ENGL 115 or ENGL 115H or ADN 140 or equivalent or through the Southwestern College multiple measures placement processes.

628330	PHIL	103 01	06/14/21	07/29/21	12:00-1:50 PM (Lec)	MTWTh		Remote	S. Dedman	7
628331	PHIL	103 501	06/07/21	08/05/21				Online	L. Cuddy	9
628332	PHIL	103 502	06/07/21	08/05/21				Online	L. Cuddy	9
632543	PHIL	103 580	06/14/21	07/29/21				Online	S. Dedman	7

PHYSICAL SCIENCE

PHS 101 INTRODUCTION TO THE PHYSICAL SCIENCES [D; CSU; UC] 3 Units

Recommended Preparation: RDG 158 or equivalent or through the Southwestern College multiple measures placement processes; MATH 45 or equivalent or through the Southwestern College multiple measures placement processes.

628334	PHS	101 01	06/14/21	08/05/21	9:00-12:20 PM (Lec)	MW		Remote	F. Hafer	8
628335	PHS	101 501	06/14/21	08/05/21				Online	K. Yanow	8

PHS 101L INTRODUCTION TO PHYSICAL SCIENCE LABORATORY [D; CSU; UC] 1 Unit

Corequisite: PHS 101 (may be taken previously).

628336	PHS	101L 01	06/14/21	08/05/21	8:45-11:55 AM (Lab)	TTh		Remote	F. Hafer	8
--------	-----	---------	----------	----------	---------------------	-----	--	--------	----------	---

PHYSICS

PHYS 270 PRINCIPLES OF PHYSICS I [D; CSU; UC; C-ID PHYS 205] 3 Units

Prerequisite: MATH 250 or equivalent. Recommended Preparation: RDG 158 or equivalent or through the Southwestern College multiple measures placement processes.

628339	PHYS	270 01	06/14/21	08/05/21	11:00-1:05 PM (Lec)	MWTh		Remote	D. Kalantarov	8
--------	------	--------	----------	----------	---------------------	------	--	--------	---------------	---

PHYS 271 PRINCIPLES OF PHYSICS LABORATORY I [D; CSU; UC; C-ID PHYS 205] 1 Unit

Prerequisite: PHYS 270 or equivalent.

628340	PHYS	271 01	06/14/21	08/05/21	1:30-3:35 PM (Lab)	MWTh		Remote	J. Markey	8
632602	PHYS	271 02	06/14/21	08/05/21	11:00-1:05 PM (Lab)	MWTh		Remote	E. Patlan Almeida	8
632601	PHYS	271 03	06/14/21	08/05/21	1:30-3:35 PM (Lab)	MWTh		Remote	H. Gonzalez Huizar	8

POLITICAL SCIENCE

PS 101 INTRODUCTION TO POLITICAL SCIENCE [D; CSU; UC; C-ID POLS 150] 3 Units

Recommended Preparation: RDG 158 or equivalent or through the Southwestern College multiple measures placement processes.

628342	PS	101 501	06/07/21	08/05/21				Online	A. Aguilar	9
633163	PS	101 502	06/07/21	08/05/21				Online	A. Aguilar	9

PS 102 INTRODUCTION TO AMERICAN GOVERNMENT AND POLITICS [D; CSU; UC; C-ID POLS 110] 3 Units

Recommended Preparation: 158 Recommended Preparation: RDG 158 or equivalent or through the Southwestern College multiple measures placement processes.

628344	PS	102 501	06/07/21	08/05/21				Online	P. Saenz	9
628345	PS	102 502	06/07/21	08/05/21				Online	P. Saenz	9

Add Code	Sect. #	Start Date	End Date	Time	Days	Room	Location	Instructor Name	# of Weeks
----------	---------	------------	----------	------	------	------	----------	-----------------	------------

PSYCHOLOGY

PSYC 101	GENERAL PSYCHOLOGY [D; CSU; UC; C-ID PSY 110]							3 Units		
Recommended Preparation: RDG 158 or equivalent or through the Southwestern College multiple measures placement processes.										
628346	PSYC	101	01	06/14/21	07/29/21	8:00-9:50 AM (Lec)	MTWTh	Remote	M. Galace	7
628347	PSYC	101	03	06/14/21	07/29/21	10:30-2:20 PM (Lec)	MW	Remote	J. Penhos	7
628349	PSYC	101	501	06/14/21	08/05/21			Online	C. Hayashi	8
628350	PSYC	101	502	06/14/21	08/05/21			Online	P. McMahan	8
628351	PSYC	101	503	06/14/21	08/05/21			Online	T. Murray	8
628352	PSYC	101	504	06/14/21	08/05/21			Online	Y. Cordero	8
628353	PSYC	101	505	06/14/21	08/05/21			Online	Staff	8
632499	PSYC	101	570	06/14/21	08/05/21			Online	T. Nguyen	8
632537	PSYC	101	580	06/07/21	07/29/21			Online	D. Smith	8
632538	PSYC	101	586	06/07/21	07/29/21			Online	M. Nelson	8
PSYC 106	HUMAN SEXUALITY [D; CSU; UC]							3 Units		
Recommended Preparation: RDG 158 or equivalent or through the Southwestern College multiple measures placement processes.										
628358	PSYC	106	01	06/14/21	07/29/21	10:30-12:20 PM (Lec)	MTWTh	Remote	K. Markowitz	7
628359	PSYC	106	501	06/14/21	08/05/21			Online	D. McAnaney	8
PSYC 116	INTRODUCTION TO SOCIAL PSYCHOLOGY [D; CSU; UC; C-ID PSY 170]							3 Units		
Recommended Preparation: RDG 158 or equivalent or through the Southwestern College multiple measures placement processes.										
633159	PSYC	116	501	06/14/21	08/05/21			Online	J. Koontz	8
PSYC 201	ACADEMIC AND CAREER OPTIONS IN PSYCHOLOGY [D; CSU]							1 Unit		
Prerequisite: PSYC 101 or equivalent.										
628361	PSYC	201	501	06/14/21	08/05/21			Online	R. Contreras	8
PSYC 211	INTRODUCTION TO COGNITIVE PSYCHOLOGY [D; CSU; UC]							3 Units		
Recommended Preparation: PSYC 101 or equivalent; RDG 158 or equivalent or through the Southwestern College multiple measures placement processes.										
632529	PSYC	211	501	06/14/21	08/05/21			Online	T. Murray	8
PSYC 230	DEVELOPMENTAL PSYCHOLOGY [D; CSU; UC; C-ID PSY 180]							3 Units		
Prerequisite: PSYC 101 or equivalent. Recommended Preparation: RDG 158 or the equivalent skill level as determined by the Southwestern College Reading Assessment or equivalent.										
628362	PSYC	230	01	06/14/21	07/29/21	10:30-12:20 PM (Lec)	MTWTh	Remote	B. Jimenez	7
628363	PSYC	230	501	06/14/21	08/05/21			Online	D. McAnaney	8
PSYC 255	INTRODUCTION TO PSYCHOLOGICAL RESEARCH [D; CSU; UC; C-ID PSY 200]							3 Units		
Prerequisite: PSYC 101 or equivalent; PSYC 270 or SOC 270 or MATH 119 or equivalent. Recommended Preparation: RDG 158 or equivalent or through the Southwestern College multiple measures placement processes; PSYC 271 or SOC 271 or equivalent.										
628364	PSYC	255	501	06/14/21	08/05/21			Online	R. Contreras	8
PSYC 260	INTRODUCTION TO PHYSIOLOGICAL PSYCHOLOGY [D; CSU; UC; C-ID PSY 150]							3 Units		
Prerequisite: PSYC 101 or equivalent.										
628365	PSYC	260	501	06/14/21	08/05/21			Online	C. Hayashi	8
PSYC 270	STATISTICS FOR THE BEHAVIORAL SCIENCES							3 Units		
Prerequisite: MATH 115 or MATH 60 or equivalent or through the Southwestern College multiple measures placement processes. Recommended Concurrent Enrollment: PSYC 271 or SOC 271. Recommended Preparation: RDG 158 or equivalent or through the Southwestern College multiple measures placement processes.										
628367	PSYC	270	02	06/14/21	07/29/21	10:30-12:20 PM (Lec)	MTWTh	Remote	A. Kowalczyk	7
628368	PSYC	270	501	06/14/21	08/05/21			Online	E. Ballesteros	8
628369	PSYC	270	502	06/14/21	08/05/21			Online	E. Ballesteros	8
632527	PSYC	270	503	06/14/21	08/05/21			Online	A. Springer	8
632539	PSYC	270	580	06/07/21	07/29/21			Online	C. Conner	8
PSYC 271	DATA ANALYSIS IN PSYCHOLOGY AND SOCIOLOGY							1 Unit		
Corequisite: PSYC 270 or SOC 270 or MATH 119 (may be taken previously). Recommended Preparation: RDG 158 or equivalent or through the Southwestern College multiple measures placement processes.										
628371	PSYC	271	601	06/21/21	08/05/21	TBA		Remote	A. Springer	7
				06/21/21	08/05/21	12:30-3:20 PM (Lab)	Th	Remote	A. Springer	7

Add Code	Sect. #	Start Date	End Date	Time	Days	Room	Location	Instructor Name	# of Weeks
----------	---------	------------	----------	------	------	------	----------	-----------------	------------

READING

RDG 158		CRITICAL READING AND THINKING [D; CSU]					3 Units			
Prerequisite: RDG 56 or equivalent or through the Southwestern College multiple measures placement processes.										
628375	RDG	158	502	06/14/21	07/29/21		Online	F. Ball		7
632662	RDG	158	605	06/14/21	07/29/21	10:30-12:00 PM (Lec)	TTh	Remote	F. Perez	7
633415	RDG	158	680	06/14/21	07/29/21	12:30-2:20 PM (Lec)	TWTh	Remote	C. De la Toba	7
<i>In this hybrid course, instructor will utilize online teaching tools, like Canvas to guide learning and Zoom to facilitate discussions.</i>										

REAL ESTATE

RE 101		REAL ESTATE PRINCIPLES [D; CSU]					3 Units			
Recommended Preparation: BUS 211 or 212 or equivalent; RDG 158 or the equivalent skill level as determined by the Southwestern College Reading Assessment or equivalent.										
628377	RE	101	501	06/07/21	07/22/21		Online	Stockin		7
628378	RE	101	502	06/07/21	07/22/21		Online	Stockin		7

RECORDING ARTS AND TECHNOLOGY

RA&T 123		AUDIO RECORDING TECHNOLOGY III [D; CSU]					4 Units			
Prerequisite: RA&T 122 or equivalent.										
632557	RA&T	123	01	06/14/21	07/29/21	1:00-2:05 PM (Lec)	MTWTh	Remote	D. Medina	7
				06/14/21	07/29/21	2:15-6:05 PM (Lab)	MTWTh	Remote	D. Medina	7
<i>This class will meet face to face not remote. The class will meet at the main campus room # 84-101. Please contact the instructor for more information.</i>										

SOCIAL WORK AND HUMAN SERVICES

SWHS 110		INTRODUCTION TO SOCIAL WORK AND HUMAN SERVICES [D; CSU; UC]					3 Units			
Recommended Preparation: ENGL 115 or equivalent.										
633164	SWHS	110	570	06/14/21	08/05/21		Online	T. Nguyen		8

SOCIOLOGY

SOC 101		INTRODUCTION TO SOCIOLOGY [D; CSU; UC; C-ID SOCI 110]					3 Units			
Recommended Preparation: RDG 158 or equivalent or through the Southwestern College multiple measures placement processes.										
628384	SOC	101	01	06/14/21	07/29/21	8:00-9:50 AM (Lec)	MTWTh	Remote	J. Baltazar	7
628386	SOC	101	501	06/14/21	08/05/21		Online	C. Vito		8
628387	SOC	101	502	06/14/21	08/05/21		Online	I. Cardona Gerena		8
628388	SOC	101	504	06/14/21	08/05/21		Online	A. Winter		8
SOC 106		RACE AND ETHNICITY [D; CSU; UC; C-ID SOCI 150]					3 Units			
Recommended Preparation: RDG 158 or equivalent or through the Southwestern College multiple measures placement processes.										
628389	SOC	106	01	06/14/21	07/29/21	10:30-12:50 PM (Lec)	TWTh	Remote	A. Brenner	7
SOC 110		CONTEMPORARY SOCIAL PROBLEMS					3 Units			
Recommended Preparation: SOC 101 or equivalent; RDG 158 or equivalent or through the Southwestern College multiple measures placement processes.										
633161	SOC	110	501	06/14/21	08/05/21		Online	C. Vito		8
<i>This is a Correspondence Course for currently incarcerated students at RJD only. For information, please contact Patrice Milkovich at pmilkovich@swccd.edu.</i>										

Add Code	Sect. #	Start Date	End Date	Time	Days	Room	Location	Instructor Name	# of Weeks
SOC 116 INTRODUCTION TO SOCIAL PSYCHOLOGY [D; CSU; UC; C-ID PSY 170] 3 Units									
Recommended Preparation: RDG 158 or equivalent or through the Southwestern College multiple measures placement processes.									
633160	SOC 116 501	06/14/21	08/05/21				Online	J. Koontz	8
SOC 270 STATISTICS FOR THE BEHAVIORAL SCIENCES 3 Units									
Prerequisite: MATH 115 or MATH 60 or equivalent or through the Southwestern College multiple measures placement processes. Recommended Concurrent Enrollment: PSYC 271 or SOC 271. Recommended Preparation: RDG 158 or equivalent or through the Southwestern College multiple measures placement processes.									
628393	SOC 270 02	06/14/21	07/29/21	10:30-12:20 PM (Lec)	MTWTh		Remote	A. Kowalczyk	7
628394	SOC 270 501	06/14/21	08/05/21				Online	E. Ballesteros	8
628395	SOC 270 502	06/14/21	08/05/21				Online	E. Ballesteros	8
632528	SOC 270 503	06/14/21	08/05/21				Online	A. Springer	8
632540	SOC 270 580	06/07/21	07/29/21				Online	C. Conner	8
SOC 271 DATA ANALYSIS IN PSYCHOLOGY AND SOCIOLOGY 1 Unit									
Corequisite: PSYC 270 or SOC 270 or MATH 119 (may be taken previously). Recommended Preparation: RDG 158 or equivalent or through the Southwestern College multiple measures placement processes.									
628397	SOC 271 601	06/21/21	08/05/21	TBA			Remote	A. Springer	7
		06/21/21	08/05/21	12:30-3:20 PM (Lab)	Th		Remote	A. Springer	7

SPANISH

SPAN 101 ELEMENTARY SPANISH I [D; CSU; UC; C-ID SPAN 100] 5 Units									
628398	SPAN 101 01	06/07/21	07/15/21	8:00-11:35 AM (Lec)	MTWTh		Remote	E. Alonso	6
633384	SPAN 101 501	06/14/21	07/29/21				Online	W. Diaz	7
SPAN 215 SPANISH FOR BILINGUALS I [D; CSU; UC; C-ID SPAN 220] 5 Units									
Prerequisite: Spanish native speaker proficiency, or the equivalent intermediate level as assessed by the instructor.									
628401	SPAN 215 60	06/07/21	07/15/21	6:00-9:35 PM (Lec)	MTWTh		Remote	E. Becerra	6

SURGICAL TECHNOLOGY

ST 160 PRACTICUM: SUBSPECIALTIES [D; CSU] 6 Units									
Prerequisite: ST 130, 140, and 150, or equivalent.									
628402	ST 160 E1	06/07/21	08/05/21	TBA			Remote	Staff	9
628403	ST 160 E2	06/07/21	08/05/21	TBA			Remote	Staff	9
ST 10C CENTRAL SERVICE TECHNOLOGY PRACTICUM [D] 3.5 Units									
Prerequisite: ST 10B or equivalent.									
632606	ST 10C E1	06/07/21	08/05/21	TBA			Remote	Staff	9
<i>A total of 198 laboratory hours to be completed. To be announced.</i>									
632608	ST 10C E2	06/07/21	08/05/21	TBA			Remote	Staff	9
<i>A total of 198 laboratory hours to be completed. To be announced.</i>									

THEATRE ARTS

TA 101 INTRODUCTION TO THE THEATRE [D; CSU; UC; C-ID THTR 111] 3 Units									
628404	TA 101 501	06/07/21	08/05/21				Online	O. Schein	9
632547	TA 101 586	06/14/21	07/29/21				Online	S. Cortez	7



PERIODICALS

SOUTHWESTERN COLLEGE
900 Otay Lakes Road
Chula Vista, CA 91910-7299

**ECRWSS
POSTAL CUSTOMER**

Southwestern College

900 Otay Lakes Rd.
Chula Vista, CA 91910
619-421-6700

Crown Cove Aquatic Center

5000 Highway 75
Coronado, CA 92118
619-575-6176

**Higher Education Center at
National City (HEC, NC)**

880 National City Blvd.
National City, CA 91950
619-216-6665

**Higher Education Center at
Otay Mesa (HEC, OM)**

8100 Gigantic Street
San Diego, CA 92154
619-216-6750

**Higher Education Center at
San Ysidro (HEC, SY)**

460 W. San Ysidro Blvd.
San Ysidro, CA 92173
619-216-6790

www.swccd.edu

900 Otay Lakes Road, Chula Vista, CA 91910-7299