

# STUDENT RESOURCE GUIDE—SUMMER 2017



## Higher Education Center at San Ysidro

460 West San Ysidro Boulevard, San Ysidro, CA 92173

(619) 216-6790

To sign up for services listed below, please go to the Student Services Desk, 1st Floor  
or Call (619) 216-6790, Ext. 4901, 4902, or 4903

## Student Services

**Monday–Thursday**  
**7:45 a.m.–6:45 p.m.**

- ◆ Admissions & Records
- ◆ Cashiering
- ◆ Counseling Appointment
- ◆ DSS Applications
- ◆ E.O.P.S. Information
- ◆ General Information
- ◆ Lost & Found
- ◆ Petitions



Jazmin



Nancy

No  
Picture  
Available

Jesus

## Counseling

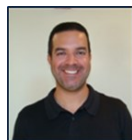
### By appointment only:

Mon: 8:30 a.m.–5:30 p.m.  
Tues: 8:00 a.m.–7:00 p.m.  
Wed: 8:00 a.m.–5:30 p.m.  
Thurs: 8:45 a.m.–6:30 p.m.

### Walk-in Hours Available:

Mon. 10:00–10:30 a.m. 4:00–4:30 p.m.  
Tues. 10:30–11:00 a.m. 5:30–6:00 p.m.  
Wed. 10:00–11:00 a.m. 2:00–2:30 p.m.  
Thurs. 10:00–11:00 a.m. 2:00–2:30 p.m.

- ◆ Academic/Career Counseling
- ◆ Personal Counseling
- ◆ Crisis Counseling
- ◆ Student Education Plan (SEP)
- ◆ Transfer to a University
- ◆ Deciding on a Major
- ◆ Orientation to College
- ◆ Scholarship Information



Osvaldo



Lisa

## Financial Aid Services

(619) 216-6790 Ext. 4904

- ◆ FAFSA / BOGW Application Assistance
- ◆ Loan Assistance
- ◆ Scholarship Assistance
- ◆ Student Employment Information

### Walk-in Hours Only

Monday–Wednesday:  
7:45–11:00 a.m. & 2:00–5:00 p.m.  
Thursday:  
7:45–11:00 a.m. & 1:00–3:00 p.m.



Laura

## Assessment Tests

### English, Math, Reading

June 14 (Wed) 12:00 p.m.  
June 28 (Wed) 12:00 p.m.  
July 12 (Wed) 12:00 p.m.  
July 26 ((Wed) 12:00 p.m.

### Room 5201

### ESL Assessment

June 21 (Wed) 10:00 a.m.  
July 5 (Wed) 10:00 a.m.  
July 19 (Wed) 10:00 a.m.  
August 2 (Wed) 10:00 a.m.

### Room 5100-A

## Disability Support Services (DSS)

**By appointment only**, go to Student Services to make an appointment.

- ◆ Disability Counseling
- ◆ Note Takers as Needed
- ◆ Priority Registration
- ◆ Test Accommodations



Jaquelyn

## Psychological Counseling

**By appointment only.**

**Therapist: Grace McKissick, Ph.D.**

**No Therapist available at HEC SY during Summer 2017 session.**

Please contact the Chula Vista Campus for an appointment.

- ◆ Personal and Psychological Counseling
- ◆ Provide support and make referrals
- ◆ Individual Psychotherapy

All hours subject to change.

PLEASE TURN OVER



## Tutoring Services

Hours are Subject to Change & Posted Next to Library Door

### ENGLISH / WRITING / ESL

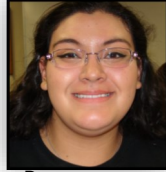
**Monday:**  
9:30 a.m.–12:00 p.m.  
**Thursday:**  
1:00–3:30 p.m.



Christie  
Library (1st Floor)

### MATHEMATICS

**Tuesday:**  
10:00 a.m.–12:30 p.m.  
**Wednesday:**  
2:00–4:30 p.m.



Ramona  
Library (1st Floor)

### COMMUNICATIONS

**Monday:**  
9:30 a.m.–1:30 p.m.  
**Thursday:**  
12:00–4:00 p.m.



Christian  
Library (1st Floor)

### COMPUTER

**Monday–Thursday:**  
10:30 a.m.–3:30 p.m.



Fernando  
Computer Lab (2nd Floor)

## Library

Library Room #5105 (1st floor)  
(619) 216-6790, Ext. 4907

**Monday–Thursday 7:45 a.m.–7:30 p.m.**

- ◆ Encyclopedias, Dictionaries, Magazines, Newspapers and Paper Back Books
- ◆ Online Requests for Information
- ◆ Reserved Textbooks



### Librarian Services

Monday & Thursday  
9:00 a.m.–12:00 p.m.  
Tuesday, 1:00–4:00 p.m.  
Wednesday, 1:00–5:00 p.m.

### Librarians

Tanya Carr  
Svetlana Kondratenko  
Erika Prange  
Sarah Way

## Health Services

Room #5108 (1st Floor)  
(619) 216-6790 Ext. 4909

- ◆ Blood Pressure Screening
- ◆ Health Education & Counseling
- ◆ Over-the-Counter Medication
- ◆ Pregnancy Testing
- ◆ Referral Services
- ◆ TB Skin Test & Readings
- ◆ Body Composition Screening

### Wednesday:

8:00 a.m.–12:30 p.m.  
Gisel Horton, Registered Nurse



Rommel



Fernando

**Monday–Thursday:  
7:45 a.m.–7:30 p.m.**

- ◆ Computers available on a first come, first-served basis
- ◆ Printing Available:  
.10 Per Black & White Copy  
.25 Per Color Copy
- ◆ Scanner available
- ◆ Computer Tech Support available:  
Monday–Thursday: 7:45 a.m.–5:45 p.m.

## Administration

Center Dean



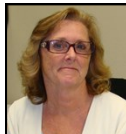
Silvia Cornejo

Center Director



Cynthia Nagura

Center Operations Supervisor



Heidi Newhouse

Center Coordinator



Corina Elizarraras

Clerical Assistant  
(Substitute)



Aida Escalanti