

STUDENT RESOURCE GUIDE—FALL 2017



Higher Education Center at San Ysidro
460 West San Ysidro Boulevard, San Ysidro, CA 92173
(619) 216-6790

To sign up for services listed below, please go to the Student Services Desk, 1st Floor
or Call (619) 216-6790, Ext. 4901, 4902, or 4903

Student Services

Monday, 7:45 a.m.–4:45 p.m.

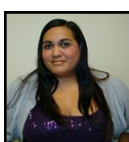
Tuesday–Thursday, 7:45 a.m.–6:45 p.m.

Friday, 7:45 a.m.–3:45 p.m.; Saturday, 8:00 a.m.–3:45 p.m.

- ♦ Admissions & Records
- ♦ E.O.P.S. Information
- ♦ Cashiering
- ♦ General Information
- ♦ Counseling Appointment
- ♦ Lost & Found
- ♦ DSS Applications
- ♦ Petitions



Jazmin



Nancy



Jesus

Counseling

Appointments Available:

Monday, Wednesday & Thursday:
8:00 a.m.–5:00 p.m.

Tuesday: 8:00 a.m.–12:45 p.m. &
3:15–7:30 p.m.

Friday: 9:00 a.m.–3:00 p.m.

Walk-ins Available:

Mon. 10:00–10:30 a.m. 1:30–2:00 p.m.

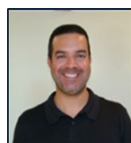
Tues. 10:30–11:00 a.m. 5:00–5:30 p.m.

Wed. 10:00–11:00 a.m. 2:00–2:30 p.m.

Thurs. 10:00–11:00 a.m. 2:00–2:30 p.m.
4:30–5:00 p.m.

Fri. 11:00–11:30 a.m. 1:30–2:00 p.m.

- ♦ Academic/Career Counseling
- ♦ Personal/Crisis Counseling
- ♦ Student Education Plan (SEP)
- ♦ Transfer to a University
- ♦ Deciding on a Major
- ♦ Orientation to College
- ♦ Scholarship Information



Osvaldo



Lisa

Financial Aid Services

(619) 216-6790, Ext. 4904

Monday, Tuesday:

7:45–10:00 a.m. & 2:00–3:30 p.m.

Wednesday: 9:30–11:30 a.m. & 3:00–5:30 p.m.

Friday: 10:00–11:00 a.m. & 1:00–3:00 p.m.

- ♦ FAFSA/BOGFW Application Assistance
- ♦ General Information
- ♦ Document Intake



Laura

All Hours subject to change.

Assessment Tests

English, Math, Reading

Room 5201

August 10 (Thursday)	12:00 p.m.
September 7 & 21 (Thursday)	12:00 p.m.
October 12 & 26 (Thursday)	12:00 p.m.
November 9 & 16 (Thursday)	12:00 p.m.
December 14 (Thursday)	12:00 p.m.

ESL Assessment

Room 5100-A

September 14 (Thursday)	11:00 a.m.
October 5 (Thursday)	11:00 a.m.
November 2 (Thursday)	11:00 a.m.
December 7 (Thursday)	11:00 a.m.

Disability Support Services (DSS)

By appointment only:

Monday, 9:30 a.m.–1:30 p.m.

- ♦ Disability Counseling
- ♦ Note Takers
- ♦ Priority Registration
- ♦ Test Accommodations



Jaquelyn

Psychological Counseling

Please contact the Chula Vista Campus for an appointment.

Personal Wellness Services

Student Services Center/Cesar E. Chavez Building
619-421-6700, Ext. 5279

- ♦ Personal and Psychological Counseling
- ♦ Provide support and make referrals
- ♦ Individual Psychotherapy

PLEASE TURN OVER



Tutoring Services

Hours Subject to Change

ESL/ENGLISH/WRITING

Tuesday
10:30 a.m.—3:30 p.m.
Wednesday
9:30 a.m.—2:30 p.m.



Christie

Library—1st floor

MATHEMATICS

Monday, *Fernando*
9:30 a.m.—1:00 p.m.
Wednesday, TBD
2:00—5:00 p.m.
Thursday, *Edward*
9:30 a.m.—12:00 p.m.



Fernando & Edward

Library—1st floor



FAMILY STUDIES RESOURCE CENTER

Please see tutor schedule
posted at the library

Library—1st floor

COMPUTER LAB

Monday, 9:30 a.m.—1:00 p.m.
4:00—7:30 p.m.
Tuesday, 9:30 a.m.—1:30 p.m.
Thursday, 9:30 a.m.—1:30 p.m.



Alberto

Computer Lab

Library

Library Room #5105 (1st floor)
(619) 216-6790, Ext. 4907

Open Study Area

Monday—Thurs, 7:45 a.m.—8:00 p.m.
Friday: 7:45 a.m.—3:45 p.m.
Saturday, 8:00 a.m.—3:30 p.m.

- ◆ Encyclopedias, Dictionaries
Magazines, Newspapers and
Paper Back Books Available
- ◆ On-Line Requests Information
- ◆ Reserved Textbooks Available



Librarian Services

Monday & Tuesday
2:00—6:00 p.m.
Wednesday & Thursday
8:00—11:00 a.m.

Librarians:

Nathan Martin
Erika Prange
Sarah Way

Computer Lab

Room #5203 (2nd floor)
(619) 216-6790, Ext. 4911

Monday—Thursday, 7:45 a.m.—7:30 p.m.
Friday, 7:45 a.m.—3:45 p.m.
Saturday, 8:00 a.m.—3:30 p.m.

- ◆ Computers available on a first come,
first served basis
- ◆ Printing Available:
.10 Per Black & White Copy
.25 Per Color Copy
- ◆ Scanner available
- ◆ Computer Technician Support:
Monday: 7:45 a.m.—4:00 p.m.
Tuesday—Thursday: 7:45 a.m.—7:30 p.m.
Friday: 7:45 a.m.—6:00 p.m.
Saturday: 8:30 a.m.—12:30 p.m.



Rommel



Fernando

Health Services

Room #5108 (1st floor)
(619) 216-6790, Ext. 4909

- ◆ Blood Pressure Screening
- ◆ Health Education & Counseling
- ◆ Over the Counter Medication
- ◆ Pregnancy Testing
- ◆ Referral Services
- ◆ TB Skin Test & Readings
- ◆ Body Composition Screening

Monday, 4:00 p.m.—6:30 p.m.
Thursday, 8:00 a.m.—1:45 p.m.
Registered Nurse: Gisell



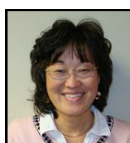
Administration

Center Dean



Silvia Cornejo

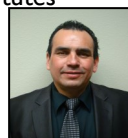
Director



Cynthia Nagura

Center Supervisor
Substitutes

TJ Tate



Robert Montano

Center Coordinator



Corina Elizarraras

Center Coordinator
Substitute

Aida Escalanti