



**SOUTHWESTERN COLLEGE**

---

**SUMMER & FALL 2026**

# Continuing Education



 **Summer:** June 8–August 6  
 **Fall:** August 24–December 13

**KEEP GROWING**

**Continuing Education:** 900 Otoy Lakes Road, Chula Vista, CA 91910-7299

**Noncredit:** Student Services Center, Building 68-101

**Community Education Courses/Traffic School/Youth Programs:** Building 59A-101

**Register early to reserve your seat.**

**[www.swccd.edu/ContinuingEd](http://www.swccd.edu/ContinuingEd)**



# TUITION-FREE AUTOMOTIVE TECHNOLOGY PROGRAMS FOR FALL 2026

## NONCREDIT CERTIFICATES



### BASICS OF AUTOMOTIVE TECHNOLOGY

This Basics of Automotive Technology certificate program includes a sequence of two noncredit courses (NC 340 and NC 341) that provide the general knowledge, skills and hands-on experience for gainful entry-level employment in an automotive repair field.

#### **NC 340-60: Basic Automotive Service I**

08/24 - 10/12/2026 - Mon/Wed  
5:15 - 8:50 P.M. - 54 hours

#### **NC 341-60: Basic Automotive Service II**

10/19 - 12/07/2026 - Mon/Wed  
5:15 - 8:50 P.M. - 54 hours



### AUTOMOTIVE PARTS SPECIALIST

The Automotive Parts Specialist certificate programs includes a sequence of two noncredit courses (NC 344 and NC 345) that provide the general knowledge, skills and experience needed for gainful, entry-level employment in the automotive industry.

#### **NC 344-01: Parts Advisor I**

8/25 - 10/08/2026 - Tue/Thur  
8:30 A.M. - 12:05 P.M. - 54 hours

#### **NC 345-01: Parts Advisor II**

10/20 - 12/08/2026 - Tue/Thur  
8:30 A.M. - 12:05 P.M. - 54 hours



### AUTOMOTIVE SERVICE CONSULTANT

This Automotive Service Consultant certificate program includes a sequence of two noncredit courses (NC 342 and NC 343) that provide the general knowledge, skills and hands-on experience for gainful entry-level employment in an automotive customer service field.

#### **NC 342-01: Service Advisor I**

08/24 - 10/12/2026 - Mon/Wed  
1:20 - 4:55 P.M. - 54 hours

#### **NC 343-01: Service Advisor II**

10/19 - 12/07/2026 - Mon/Wed  
1:20 - 4:55 P.M. - 54 hours

Enroll here! →



See More Schedules or Enroll at

[www.swccd.edu/continuinged](http://www.swccd.edu/continuinged)

# Table of Contents

- How to Apply and Register ..... 2
- Registration Help ..... 2
- Course Types and Information ..... 3
- How to Read the Class Schedule ..... 3
- Class Locations and Parking Information ..... 4
- General Information ..... 5
- Course Listings ..... 6
- Index ..... 39

## Career Development

- Health and Public Safety ..... 7
- Business ..... 11
- Business, Customer Service ..... 13
- Education, Humanities, Social and Behavioral Sciences ..... 14
- Training Opportunities for those with Disabilities ..... 15
- Applied Technology and Hospitality Management ..... 15
- Online Career Training Programs (Ed2go) ..... 17

## College and Career Readiness

- College and Career Planning ..... 19
- Math Skill Development ..... 20
- Computers Skills to Begin or Advance Your Career ..... 22

## Southwestern College Continuing Education Schedule

The Southwestern College Schedule (USPS #024423) is published two times a year in November and May by the Office of Advancement and Community Engagement and the Office of Continuing Education at Southwestern College, 900 Otay Lakes Road, Chula Vista, CA 91910-7299.

Periodicals Postage Paid at Chula Vista, California. Volume 20, Issue Number 4, May 2026, Southwestern College Schedule. POSTMASTER: Send address changes to Southwestern College Schedule, 900 Otay Lakes Road, Chula Vista CA 91910-7299.

## Governing Board of the Southwestern Community College District

Kristine Galicia Brown, President  
 Nicholas Segura, Vice President  
 Don Dumas  
 Robert Moreno  
 Corina Soto  
 Mercedes Robles, Student Trustee, June 2025–May 2026  
 Mark Sanchez, Ed.D., Superintendent/President

## English as a Second Language (ESL)

- ESL ..... 24
- Computers and Technology for ESL ..... 26
- Conversation Skills Courses for ESL ..... 26

## Exploration and Personal Growth

- Life Enrichment for Older Adults ..... 28
- Fitness & Wellness ..... 30

## Jaguar Tennis Academy

- Beginning to Advanced Tennis ..... 32

To request this schedule in alternate media, please call (619) 482-6512 or TTY (619) 482-6470.

New classes are always being added. For an up-to-date listing of classes, visit the Continuing Education section of the Southwestern College website: [www.swccd.edu/continuinged](http://www.swccd.edu/continuinged)

Your feedback, suggestions, and comments are welcomed. For Noncredit, email us at [continuinged@swccd.edu](mailto:continuinged@swccd.edu) For Community Education and Y.E.S., Academy, email us at [customizedtraining@swccd.edu](mailto:customizedtraining@swccd.edu)

## Mission Statement

Southwestern Community College District is the premier public institution of higher education in Southern San Diego County that serves a diverse community of students by providing quality academic programs, comprehensive student support services that ensure equitable access, and clear pathways to student success.

Southwestern Community College District promotes learning and success to prepare students to become critical thinkers and engaged life-long learners/global citizens. The District is committed to continuous improvements through the use of data-informed planning, implementation, and evaluation.

Southwestern Community College District utilizes a variety of instructional modalities to provide educational and career opportunities in the following areas: Associate degree and certificate programs, transfer, professional, technical and career advancement, foundational skills, personal enrichment, and continuing education.

Governing Board approved August 12, 2024

## Non-Discrimination Statement

The Southwestern Community College District does not discriminate on the basis of race, color, religion, national origin, gender, sexual orientation, disability, age, or marital status in any of its policies, procedures, or practices. This nondiscrimination policy covers admission, employment, and access to all college programs and activities. Questions about the Rehabilitation Act of 1973, Section 504, and student grievances should be directed to the Dean of Student Services, at 619-482-6369. Title IX inquiries should be directed to the Title IX Administrator, at 619-482-6329. Inquiries regarding Equal Employment Opportunity and other nondiscrimination policies and procedures should be directed to the Vice President for Employee Services, 619-482-6329.

# How to Apply and Register

All Continuing Education courses are open to the public and **do not offer college credit.**

Complete  
your **NONCREDIT**  
application  
**ONLINE or ON**  
**PAPER**

Paper application  
can be found on  
page 37 and 38.

## Noncredit Courses

All noncredit classes listed in the program are **FREE**. Nominal material fees may apply.

## \$ Community Education Courses

Classes with a fee are identified throughout the schedule with this: **\$**



### Complete your application

Complete or update your noncredit application at [www.tinyurl.com/swcopenccc](http://www.tinyurl.com/swcopenccc).

You can also pick up a paper copy of our noncredit application at any of our campus locations.



### Check your personal email

After you have completed or updated your noncredit application online, you will receive an email within 24-48 hours with steps to activate your MySWC account.



### Activate your account

Follow the steps in your email to activate your MySWC account. You will have access to your student SWC email as well as other campus links, including Student Self-Service. Once your account is activated, **all SWC correspondence will be sent to your SWC email.**



### Register for courses

Register for courses online using Student Self-Service. To access Student Self-Service, **login to your MySWC account**, and select **Search for Classes**, select **Term** and select **Noncredit** for the Subject. **Do NOT enter specific information about the course.**



### Visit our registration website

Visit our online registration website at [www.tinyurl.com/communityedswc](http://www.tinyurl.com/communityedswc)



### Create your account

On the top right of the registration website, click on **"Create Account"**. Once you create your account, you will be able to register for courses.



### Find your courses

Search for courses using the "Course Search" features on the main landing page, or browse all community education courses by **clicking on the menu tab** on the left hand side of the webpage labeled **"Community Education Classes"**. Course numbers for Community Education classes start with "CS."



### Add courses to your cart

Once you find the course(s) that you are interested in, add them to your cart.



### Checkout

When ready, select **"Checkout"**. Answer any required questions, and enter your payment details. Once your checkout is complete, you will receive an email confirmation of your registration.

## Need Help Registering? Contact Us!



### Noncredit Courses:

900 Otay Lakes Road, Chula Vista, CA 91910  
Student Services Center Building: 68-101

Phone: (619) 482-6376

Email: [continuinged@swccd.edu](mailto:continuinged@swccd.edu)

Web: [www.swccd.edu/continuinged](http://www.swccd.edu/continuinged)



### Community Education Courses/ Youth Programs:

900 Otay Lakes Road, Chula Vista, CA 91910  
Building 59A-101

Phone: (619) 482-6533

Email: [customizedtraining@swccd.edu](mailto:customizedtraining@swccd.edu)

Web: [www.swccd.edu/continuinged](http://www.swccd.edu/continuinged)

# Course Types and Information

## Noncredit Courses (NC)

Noncredit courses are open to the public and **do not offer college credit**. Courses are tuition-free. Nominal materials fees apply. [California Education Code, Section 84757(a) and 84760.5, and Title 5, Section 58160.]

## Community Education (CS)

Some Continuing Education courses have a fee, and are classified as Community Education (denoted with **\$** in course description) and are designated and authorized under Title 5. These programs are supported by a fee paid by participants.



## Ed2Go Partnership

Southwestern College partners with Ed2Go to provide access to a variety of online career training programs

designed to help individuals build new workforce skills or advance in their current careers. These programs are delivered **fully online**, are **self-paced**, and allow students to **begin at any time**. Upon successful completion of the required coursework, participants may receive a Certificate of Participation recognizing completion of the training program offered through Ed2Go in partnership with Southwestern College. These programs are offered through a third-party training provider (Ed2Go) and are not Southwestern College credit or noncredit courses. **These programs do not award college credit, do not transfer for credit, and are not eligible for federal or state financial aid.** Tuition is paid through the Ed2Go platform. Payment plans may be available through Ed2Go at checkout, and additional financial assistance opportunities may be available for members of the military community. To Register for Ed2Go classes or for more information you can do one of the following:

- visit: [careertraining.swccd.edu](http://careertraining.swccd.edu)
- or call: (619) 482-6533

# How to Read the Class Schedule

Below is an example of important course schedule information.

Title of course offered	<b>COURSE NAME</b>	Day of week course meets (abbreviations listed below), dates, and time
<b>\$</b> Course fee icon (if applicable) will be at the start of course description.	Description of course. If it is the same instructor for each course code, name will be included in the description. If instructor varies per class, name will be listed under course code.	Location code for where face-to-face courses are held. Locations/addresses for codes are listed on page 6.
Instructor name (if same for all course codes). <b>No fee</b> (if applicable) will be after the name, with course hours.	<b>Instructor: Name. No fee, 6 hours.</b>	Room number (if applicable)
Course code/number	<b>NC 1002-E1</b>	Additional details (material fees, no class meeting dates, etc.)
Class format (five types listed below)	<b>T</b> <b>Feb. 14 &amp; 21</b> <b>5-7:50 p.m.</b>	
	Class type: Face-to-face	
	Location: SYEC	
	Instructor: L. Sevilla	
	Room: 5201	
	No class 11/24, 11/25, 12/15	
	Name of instructor of specific course code. If TBA is listed, instructor has not been determined at time of printing of schedule.	

## Course Meeting Days

**Course Meeting Day Abbreviations:** **M:** Monday | **T:** Tuesday | **W:** Wednesday | **Th:** Thursday | **F:** Friday | **Sat:** Saturday | **Sun:** Sunday

**Example:** Class meets on Monday and Tuesday: MT. Class meets Saturday and Sunday: SatSun

## Class Formats

Southwestern College Continuing Education classes are offered in four formats. Classes in all formats meet the same academic rigor and requirements. Pay careful attention to the class format to ensure you choose the class type most convenient for you and that will provide the best academic experience.

**Hybrid Classes:** Meet online and face-to-face for some of the time on the day(s) that the section is scheduled for. Students must complete related work in various other ways outside of these class meetings.

**Online Classes:** Traditional (Asynchronous) type of online class with NO set meeting times; learning is not live, and class work is performed/ submitted in Canvas by weekly deadlines. Before the start of the class, the instructor will send you an email with instructions to access your online classroom.

**Face-to-Face Classes:** Classes will be held on campus or at community locations. **Please carefully review the location** of the class for which you are registering.

**Synchronous "Live" Online Classes:** Meets virtually for all hours posted in the schedule.

# SWC Campus Information

## Chula Vista Code: **SWC Chula Vista**

900 Otay Lakes Rd., Chula Vista, CA 91910  
(619) 421-6700

## Higher Education Center at National City Code: **HECNC**

880 National City Blvd., National City, CA 91950  
(619) 216-6665

## Higher Education Center at Otay Mesa Code: **HECOM**

8100 Gigantic St., San Diego, CA 92154  
(619) 216-6750

## Higher Education Center at San Ysidro

### Code: **HECSY**

460 W. San Ysidro Blvd., San Ysidro, CA 92173  
(619) 216-6790

## Crown Cove Aquatic Center Code: **CCAC**

5000 Highway 75, Coronado, CA 92118  
(619) 575-6176

View campus maps online at: [swccd.edu/maps](http://swccd.edu/maps)

## Campus Parking

Vehicles parked on our Southwestern College campuses must have a valid virtual parking permit. We recommend that you obtain a permit and register your vehicle before arriving on campus. Registered students may purchase a semester virtual permit. Visitor permits are available for \$3/day or \$10/month. Once the online process is completed, your virtual parking permit will be active immediately. You can request a virtual parking permit by scanning the QR code or visiting [swc.thepermitstore.com](http://swc.thepermitstore.com).

Learn more about campus parking regulations online at:

[swccd.edu/student-support/college-police/parking-services-and-enforcement](http://swccd.edu/student-support/college-police/parking-services-and-enforcement)



## Noncredit Off-Campus Class Locations

Classes are also offered at multiple locations throughout the community, making it easier for you to find a class close to work or home. Class locations are listed in the course section information by CODE throughout the schedule.

### **BONITA**

#### **San Diego County Library- Bonita Sunnyside Branch**

##### **Code: BSLB**

4375 Bonita Road  
Bonita, CA 91902  
(619) 475-4642

### **CHULA VISTA**

#### **Chula Vista Adult School**

##### **Code: CVAS**

1034 Fourth Avenue  
Chula Vista, CA 91911  
(619) 796-7000

#### **Chula Vista Public Works**

##### **Code: CVPW**

1800 Maxwell Road  
Chula Vista, CA 91911  
(619) 397-6000

#### **Feaster Charter School**

##### **Code: FCS**

670 Flower Street  
Chula Vista, CA 91910  
(619) 422-8397

#### **Harborside Elementary School**

##### **Code: HES**

681 Naples Street  
Chula Vista, CA 91911  
(619) 422-8369

#### **Lilian J. Rice Elementary School**

##### **Code: RICE**

915 Fourth Avenue  
Chula Vista, CA 91911  
(619) 420-7071

#### **Loma Verde Elementary School**

##### **Code: LOMA**

1450 Loma Lane  
Chula Vista, CA 91911  
(619) 420-3940

#### **Molina Healthcare Chula Vista Resource Center**

##### **Code: MOLI**

689 Palomar Street  
Chula Vista, CA 91911  
(855) 655-4621

#### **Mueller Charter School**

##### **Code: MCS**

715 I Street  
Chula Vista, CA 91910  
(619) 422-6192

#### **Otay Elementary School**

##### **Code: OES**

1651 Albany Ave,  
Chula Vista, CA 91911  
(619) 425-4311

#### **Palomar Elementary School**

##### **Code: PES**

300 E Palomar Street  
Chula Vista, CA 91911  
(619) 420-0134

#### **St. Mark's Lutheran Church**

##### **Code: SMLC**

580 Hilltop Drive  
Chula Vista, CA 91910  
(619) 427-5515

#### **Sweetwater Union High School District - Parent Center**

##### **Code: SWPC**

466 Moss Street  
Chula Vista, CA 91911  
(619) 934-8478

### **IMPERIAL BEACH**

#### **Imperial Beach Senior Center**

##### **Code: IBSC**

1075 8th Street  
Imperial Beach, CA 91932  
(619) 424-7077

#### **San Diego County Library - Imperial Beach Branch**

##### **Code: IBBL**

810 Imperial Beach Boulevard  
Imperial Beach, CA 91932  
(619) 424-6981

#### **Reach Out to Families Center**

##### **Code: ROFC**

1237 Elder Avenue  
Imperial Beach, CA 91932  
(619) 628-5081

### **NATIONAL CITY**

#### **Central Elementary School**

##### **Code: CES**

933 E. Avenue  
National City, CA 91950  
(619) 336-7400

#### **National City Adult School**

##### **Code: NCAS**

517 Mile of Cars Way  
National City, CA 91950  
(619) 336-9400

### **SAN DIEGO/OTAY MESA**

#### **Los Altos Elementary School**

##### **Code: LAES**

1332 Kenalan Dr,  
San Diego, CA 92154  
(619) 690-5880

#### **Montgomery Adult School**

##### **Code: MAS**

3240 Palm Avenue  
San Diego, CA 92154  
(619) 600-3800

**Otay Mesa -Nestor Branch Library**  
**Code: OMNL**  
 3003 Coronado Ave.  
 San Diego, CA 92154  
 (619) 424-0474

**SAN YSIDRO Milejo Village**  
**Code: MVC**  
 429 W. San Ysidro Blvd.  
 San Ysidro, CA 92173  
 (619) 914-4121

**Nicoloff Elementary School**  
**Code: NICO**  
 1777 Howard Ave.  
 San Ysidro, CA 92173  
 (619) 428-7000

**San Diego Public Library - San Ysidro Branch**  
**Code: SDSY**  
 4235 Beyer Blvd.  
 San Diego, CA 92173  
 (619) 424-0475

**San Ysidro Adult School**  
**Code: SYAS**  
 4220 Otay Mesa Rd.  
 San Ysidro, CA 92173  
 (619) 428-7200

**San Ysidro Elementary School District -Parent Resource Center**  
**Code: SYSD1**  
 4350 Otay Mesa Rd.  
 San Ysidro, CA 92173  
 (619) 428-4476

## General Information

### CERTIFICATE OF COMPLETION

Some multi-session noncredit courses offer a Certificate of Completion. When applicable, students must attend all classes and meet certification requirements as established by the college.

### CERTIFICATE FOR COMMUNITY EDUCATION CLASSES

Some Community Education classes may provide a certificate recognizing participation or training completed in the course. Certificates are issued only for select classes that meet specific training or regulatory requirements. The type of certificate varies depending on the class.

### CLASS CANCELLATION

Every attempt is made to avoid canceling a class. However, sometimes it is necessary to cancel before the first meeting when enrollment is low. If the college has advance notice that a class will be canceled, Continuing Education will attempt to reach you by the email address or phone number provided on your application.

### REFUNDS

#### (APPLIES TO COMMUNITY EDUCATION COURSES ONLY)

A full refund will be made if Continuing Education cancels a class. If you have registered for a class and you cancel at least three (3) business days before the start of the class, you will receive a full refund of the class fee. You are not eligible for any refund beyond the three-day period. There are no registration credits or rescheduling options available beyond the three (3) day refund period. No-shows are not eligible for a refund. A refund may take up to four to six weeks to process.

### REGISTRATION AND MATERIALS FEE

Registration fees are required for all community education classes. A materials fee may be required for some community education and noncredit classes. Please be prepared to pay these fees by credit/debit card at the time of registration.

### INSTRUCTOR CLASS AND POLICY CHANGES

Sometimes, a qualified substitute instructor may replace the individual listed in the schedule. Class dates are also subject to change. When feasible, students will be notified of any changes before the class either by email or by phone. Check Self-Service for up to date noncredit class information and [www.tinyurl.com/communityed.com](http://www.tinyurl.com/communityed.com) for Community Education and Y.E.S. Academy classes.

### DISCLAIMER

While every reasonable effort is made to ensure that statements in the schedule are accurate, the information contained herein is subject to change or elimination without notice by the administration of the Southwestern Community College District. Students should consult the appropriate campus or department website for current information as well as any special rules or requirements imposed.

### CAMPUS STUDENT ID CARDS

#### (APPLIES TO NONCREDIT COURSES ONLY)

If you require a student ID card, please contact the Office of Student Activities at (619) 421-6700, ext. 5433 or by email at [swcstudentactivities@swccd.edu](mailto:swcstudentactivities@swccd.edu).

The Office of Student Activities is where students can obtain their student ID card on the Chula Vista campus. Here are a few things to keep in mind when requesting an ID card:

- Only students currently enrolled and attending noncredit classes are eligible for student ID cards
- Student IDs can be requested virtually by filling out our online SWC ID Request Form, located on the Student Activities webpage. When your ID is ready, you'll receive an email with pick-up instructions.
- Student IDs can also be requested in person at the Office of Student Activities on the Chula Vista campus (Rm. 67-232, or at any of the three Higher Education Centers (San Ysidro, Otay Mesa, & National City).

### ADD AND DROP POLICY

#### (APPLIES TO NONCREDIT COURSES ONLY)

Students are encouraged to apply and register five days prior to the start of the class in order to prevent class cancellation due to low enrollment. Any student who is not present on the first day of class may be dropped from the course by the instructor. After the first class meeting, any student with three (3) consecutive absences from a noncredit class without prior notice (or in the event of a short-term class, having missed 25% of courses to date) may be officially dropped from the course. Nonattendance does not constitute an automatic withdrawal. Should a student register and be unable to attend or decide not to continue, the student must contact the instructor or the Continuing Education office immediately to be withdrawn from the course.

### DIVERSITY INITIATIVE

Southwestern Community College District seeks to foster and engage diversity as integral to our learning community and in educational excellence. Diversity is valued as an essential cornerstone to civility, dignity, fairness, respect, and trust.



# Career Development

**Grow Your Career:** Find a new job or upgrade your current one with career certificate programs. Courses are offered day, night and online, and are designed to lead directly to high-demand occupations.





## Health and Public Safety

For registration and information on CPR classes, please contact CCAC's Community CPR & First Aid Program Office at [cpr4you@swccd.edu](mailto:cpr4you@swccd.edu) or by calling (619) 429-1669 or (619) 575-6176

### ALZHEIMER'S DISEASE & DEMENTIA TRAINING

Covers a variety of topics specific to those who are living with Alzheimer's Disease or other types of dementia and how to manage the different aspects of care needed. This course curriculum has been developed by the National Council of Certified Dementia Practitioners (NCCDP). **After completing this course, participants may apply for national certification as a Certified Dementia Practitioner through NCCDP if they meet eligibility criteria.**

**Instructor: TBA, No fee, 8 hours.**

#### SUMMER

**NC 446-301** Th Jul. 9 8 a.m.-4:50 p.m.  
 Class type: Face-to-face Location: HECOM  
 Room: 4310

#### FALL

**NC 446-301** Sat Oct. 3 8 a.m.-4:30 p.m.  
 Class type: Face-to-face Location: HECOM  
 Room: 4310

National Council of Certified Dementia Practitioners (NCCDP) Alzheimer's Disease & Dementia Care Handbook (\$35 e-Copy or \$45 hardcopy). Publisher: NCCDP

Contact Jamie O'Connor Florez at [jflorez@swccd.edu](mailto:jflorez@swccd.edu) for more information about the course and student handbooks.

### BASIC FIRST AID AND ADULT CPR

Designed to prepare individuals to recognize and treat injuries and sudden illnesses. Meets the requirements for basic first aid and adult CPR in the workplace.

**No fee, 8 hours.**

#### SUMMER

**NC 40-75** Sat Jun. 13 8:30 a.m.-4:40 p.m.  
 Class type: Face-to-face Location: HECNC  
 Room: 7211  
**Instructor: L. Alvarado**

**NC 40-E1** Sat Jul. 18 8:30 a.m.-4:40 p.m.  
 Class type: Face-to-face Location: CCAC  
**Instructor: L. Alvarado**

**NC 40-E2** Th Jun. 25 8 a.m.-4:10 p.m.  
**NC 40-E3** Th Jul. 16 8 a.m.-4:10 p.m.  
 Class type: Face-to-face Location: CVPW  
**Instructor: D. Olivias**

#### FALL

**NC 40-E1** Sat Sep. 19 8:30 a.m.-4:40 p.m.  
**NC 40-E2** Sat Nov. 7 8:30 a.m.-4:40 p.m.  
 Class type: Face-to-face Location: CCAC  
**Instructor: L. Alvarado**

**NC 40-75** Sat Oct. 17 8:30 a.m.-4:40 p.m.  
 Class type: Face-to-face Location: HECNC  
**Instructor: L. Alvarado** Room: 7211

**NC 40-E3** Th Aug. 20 8 a.m.-4:10 p.m.  
**NC 40-E4** Th Sep. 17 8 a.m.-4:10 p.m.  
**NC 40-E5** Th Oct. 15 8 a.m.-4:10 p.m.  
**NC 40-E6** Th Nov. 19 8 a.m.-4:10 p.m.  
 Class type: Face-to-face Location: CVPW  
**Instructor: D. Olivias**

**NC 40-E7** TW Sep. 15-16 8:30 a.m.-12:20 p.m.  
 Class type: Face-to-face Location: NCAS  
**Instructor: L. Alvarado**

**NC 40-E8** WTh Sep. 16-17 8:30 a.m.-12:20 p.m.  
 Class type: Face-to-face Location: NCAS  
**Instructor: B. Burdick**

Required textbook: **Heartsaver First Aid CPR AED (2025) (eBook available at CCAC for \$5/Hard Copy book available at CCAC \$10) American Heart Association (AHA) course completion certificate is \$35.** As per the new AHA guidelines all cards will be submitted in electronic format, students **must** provide an accurate email address to obtain course completion certifications.

## Home Health Aide (HHA) (NC 443)

Prepares Certified Nurse Assistants for certification as a Home Health Aide by the California Department of Public Health (CDPH). Allows students to function as an entry-level worker on a health care team or with a home health agency. Includes training on the medical and social needs of the client, personal care services, nutrition, and cleaning and care tasks in the home.

Approved for 26 CEs - Full attendance required. Must have an active, unexpired CNA certification through the California Department of Public Health (CDPH). Contact the Nursing Office at (619) 482-6352 or [nursing@swccd.edu](mailto:nursing@swccd.edu) for more information. **Instructor: TBA, No fee, 40 hours.**

**SUMMER: JUNE 1-10**  
 Mon., Tues., Wed.

**FALL: AUGUST 10-18**  
 Mon., Tues., Wed.

Uniform, complio (\$126)  
 CA Community Colleges  
 Chancellor's Office Model  
 Curriculum for Home Health Aides





## BASIC LIFE SUPPORT (BLS) INSTRUCTOR

Designed to advance the Basic Life Support (BLS) provider to the position of instructor. Teaches the instructor candidate the components and delivery of cognitive and psychomotor skills training used for BLS training.

**Instructor: B. Burdick, No fee, 16 hours.**

Students must be approved by AHA Training Center via email at [bburdick@swccd.edu](mailto:bburdick@swccd.edu) at least 2 weeks prior to the course date.

### SUMMER

**NC 1039-E1 SatSun Jun. 27 & 28 8:30 a.m.–4:40 p.m.**  
Class type: Face-to-face Location: CCAC

### FALL

**NC 1039-E1 SatSun Nov. 21 & 22 8:30 a.m.–4:40 p.m.**  
Class type: Face-to-face Location: CCAC

## Marine Safety Service Basic Certificate of Completion

(Complete NC 15, NC 70, NC 106,  
NC 1007 and NC 1014)

## CPR FOR THE HEALTHCARE PROVIDER

Provides the professional rescuer with the knowledge and skills to provide Basic Life Support (BLS) to a victim in an emergency. Necessary for anyone wishing to become a BLS instructor. Follows the guidelines of both the American Red Cross and the American Heart Association.

**No fee, 9 hours.**

### SUMMER

**NC 1007-E1 Sat Jun. 20 8:30 a.m.–5:40 p.m.**  
Class type: Face-to-face Location: CCAC  
**Instructor: B. Burdick**

**NC 1007-E2 Sat Jul. 25 8:30 a.m.–5:40 p.m.**  
Class type: Face-to-face Location: CCAC  
**Instructor: N. Cosby**

### FALL

**NC 1007-E1 Sat Aug. 29 8:30 a.m.–5:40 p.m.**  
**NC 1007-E4 Sat Nov. 14 8:30 a.m.–5:40 p.m.**  
Class type: Face-to-face Location: CCAC  
**Instructor: B. Burdick**

**NC 1007-E2 Sat Sep. 26 8:30 a.m.–5:40 p.m.**  
**NC 1007-E3 Sat Oct. 24 8:30 a.m.–5:40 p.m.**  
**NC 1007-E5 Sat Dec. 12 8:30 a.m.–5:40 p.m.**  
Class type: Face-to-face Location: CCAC  
**Instructor: N. Cosby**

Components include one-and two-rescuer CPR and foreign body airway obstruction (FBAO) in adults, children, and infants. Bag-valve-mask (BVM) and Automated External Defibrillation (AED) also included. Successful completion of a written test is required to receive course completion certificate. Required book: **BLS Provider Manual 2025, (Book available at CCAC for \$25) American Heart Association (AHA) course completion certificate is \$35.** As per the new AHA guidelines all cards will be submitted in electronic format, students must provide an accurate email address to obtain course completion certifications. Follows the guidelines of the AHA.

## CONSTRUCTION OSHA 10

Provides students training for entry-level OSHA 10-hour Construction Industry Standard certification. Provides information on employee rights, employer responsibilities, and construction site hazards. Includes all required topics for certification. Successful completion of this course, and a required Federal processing fee, gives eligible students a 10-hour OSHA Construction Industry Standards card.

**No fee, 12 hours.**

### FALL

**NC 141-E2 MTWTh Nov. 2-5 8:30–11:20 a.m.**  
Class type: Face-to-face Location: CVAS

**Instructor: M. Noceda**  
*\$10 materials fee paid at the time of registration.*

**NC 141-E1 MTWTh Oct. 26–29 5:30–8:20 p.m.**  
Class type: Face-to-face Location: CVAS

**Instructor: M. Fraere**  
*\$10 materials fee paid at the time of registration.*

## FIRST AID FOR PUBLIC SAFETY PERSONNEL-TITLE 22

Contains first aid skills for public safety personnel as a first responder to provide initial care regardless of the emergency. Course is divided into four units: first responder assessment, specific injuries, muscle and bone injuries, and medical emergencies. Meets the skill and knowledge requirements of Title 22 of the California Code. As per the new AHA guidelines all cards will be submitted in electronic format, students must provide an accurate email address to obtain course completion certifications.

**Instructor: TBA, No fee, 16 hours.**

### FALL

**NC 15-E1 MTWTh Oct. 12–15 6–9:50 p.m.**  
Class type: Face-to-face Location: CCAC

## LIFEGUARD TRAINING

Provides students with skills and information which will help them effectively prevent, recognize, and respond to aquatic emergencies including in-and-out of water skills, CPR for professional rescuer, first aid, open water experience, and cardiovascular and swim conditioning elements. Certifications include American Red Cross Lifeguard Training. (Includes First Aid and CPR/PRO.)

As per the new Red Cross guidelines all cards will be submitted in electronic format, students must provide an accurate email address to obtain course completion certifications.

**Instructor: TBA, 36 hours.**

### FALL

**NC 70-E1 MTWTh Oct. 5–9 6–9:50 p.m.**  
**Sat Oct. 10 8:30 a.m.–5:30 p.m.**  
**Sat Oct. 17 8:30 a.m.–5:30 p.m.**

Class type: Face-to-face Location: CCAC



## Optical Technician Training Program Certificate of Completion (Complete NC 311 and NC 312)

### OPTICAL TECHNICIAN I

Provides participants training for entry-level employment in the Optical Field as an Optician or Optometric Assistant. Lectures cover anatomy and terminology pertaining to the eye, optical theory, and spectacle lens design. Practical instruction provides hands-on training verified through a skills check-off system. Includes topics for study and preparation for the National Opticianry Certification Exam (NOCE) administered by the American Board of Opticianry.

**No fee, 45 hours.**

#### SUMMER

**NC 311-70**    **MTW**    **Jun. 8–Jul. 8**    **6–8:50 p.m.**  
 Class type: Face-to-face    Location: HECNC  
**Instructor: A. Ramirez**    Room: 7204

#### FALL

**NC 311-76**    **MW**    **Sep. 14–Oct. 21**    **6–9:25 p.m.**  
 Class type: Face-to-face    Location: HECNC  
**Instructor: A. Ramirez**    Room: 7204

**NC 311-75**    **SatSun**    **Sep. 20–Oct. 24**    **8:30 a.m.–12:45 p.m.**  
 Class type: Face-to-face    Location: HECNC  
**Instructor: M. McCollough**    Room: 7204

### OPTICAL TECHNICIAN II

The second part of a two part program that will provide participants training for entry-level employment in the Optical Field as an Optician or Optometric Assistant. Lectures cover anatomy and terminology pertaining to the eye, optical theory, and spectacle lens design. Practical instruction provides hands-on training verified through a skills check-off system. Includes topics for study and preparation for the National Opticianry Certification Exam (NOCE) administered by the American Board of Opticianry.

**No fee, 45 hours.**

#### SUMMER

**NC 312-70**    **MTW**    **Jul. 13–Aug. 5**    **6–9:30 p.m.**  
 Class type: Face-to-face    Location: HECNC  
**Instructor: A. Ramirez**    Room: 7204

#### FALL

**NC 312-75**    **SatSun**    **Oct. 25–Dec. 13**    **8:30–11:45 a.m.**  
 Class type: Face-to-face    Location: HECNC  
**Instructor: M. McCollough**    Room: 7204  
*No Class: 11/28, 11/29*

**NC 312-76**    **MW**    **Oct. 26–Dec. 09**    **6–9:10 p.m.**  
 Class type: Face-to-face    Location: HECNC  
**Instructor: A. Ramirez**    Room: 7204  
*No Class: 11/11*

### OXYGEN ADMINISTRATION FOR THE PROFESSIONAL RESCUER

Provides the student with the knowledge and skills necessary to provide care to victims of respiratory emergencies, by using breathing devices such as; suction, oral and airway adjuncts, resuscitation masks, bag-valve-masks, and supplemental oxygen. Follows both the American Red Cross and the National Safety Council (Green Cross) guidelines. As per the new AHA guidelines all cards will be submitted in electronic format, students must provide an accurate email address to obtain course completion certifications.

**Instructor: TBA, 3 Hours**

#### FALL

**NC 1014-E1**    **F**    **Oct. 16**    **6–8:50 p.m.**  
 Class type: Face-to-face    Location: CCAC

### PEDIATRIC SAFETY AND CPR

Provides individuals with the knowledge and skills necessary to prevent, recognize, and provide basic care for respiratory, cardiac, and first aid emergencies in children and infants. Follows the American Heart Association Basic Life Support (BLS) and updated 2020 First Aid guidelines.

**Instructor: B. Burdick, No fee, 8 hours.**

#### SUMMER

**NC 1022-75**    **Sat**    **Jul. 11**    **8:30 a.m.–4:40 p.m.**  
**NC 1022-76**    **Sat**    **Aug. 1**    **8:30 a.m.–4:40 p.m.**  
 Class type: Face-to-face    Location: HECNC  
 Room: 7211

#### FALL

**NC 1022-75**    **Sat**    **Sep. 12**    **8:30 a.m.–4:40 p.m.**  
 Class type: Face-to-face    Location: HECNC  
 Room: 7211

**NC 1022-E1**    **Sat**    **Oct. 10**    **8:30 a.m.–4:40 p.m.**  
 Class type: Face-to-face    Location: LOMA

**NC 1022-E2**    **Sat**    **Dec. 5**    **8:30 a.m.–4:40 p.m.**  
 Class type: Face-to-face    Location: CCAC

Required textbook: **Heartsaver Pediatric First Aid CPR AED (2025) (eBook available at CCAC for \$5/Hard copy book available at CCAC \$10).** Successful completion of a written and psychomotor test is required to receive course completion certificate. **American Heart Association (AHA) course completion certificate is \$35.** As per the new AHA guidelines all cards will be submitted in electronic format, students must provide an accurate email address to obtain course completion certifications.



## ☛ PHLEBOTOMY TECHNICIAN PROGRAM

Are you interested in a career as a healthcare professional with a flexible schedule and job security? Become a Phlebotomy Technician today! Phlebotomists earn an average base salary of \$50,255 among other benefits. Southwestern College has partnered with PhlebotomyU to provide our students with a California Department of Public Health (CDPH) approved phlebotomy training program at a significantly discounted rate. Industry-leading instructors will teach students, preparing them to pass the national phlebotomy exam required to become a certified Phlebotomy Technician I (CPT I). This course consists of approximately 100 classroom hours, including basic and advanced didactic instruction, practical skills training, preparation for and taking the national exam, plus a 1-3 week externship to prepare you to start your career as a Phlebotomy Technician.

The Phlebotomy Program includes all requirements to apply for a Certified Phlebotomy Technician I (CPT I) license with the California Department of Public Health (CDPH) to work as a phlebotomist in the state of CA.

**Instructor: Phil Rey, PhlebotomyU**

### Course Requirements & Prerequisites:

- 18 years or older
- Minimum high school education or equivalent
- English proficiency both written and verbal
- No prior phlebotomy experience required
- Background Check & Drug Screen required for clinical placement
- Prior convictions may be reviewed on a case-by-case basis to determine eligibility.

### ☀ SUMMER

**CS 330-71 M-Th July 20-Aug. 31 3-7 p.m. Fee: \$2,399**  
 Type of class: Face-to-face Location: SWC Chula Vista  
 Room: 34-101

### 🍂 FALL

**CS 330-72 M-F Oct. 19-Nov. 23 3-7 p.m. Fee: \$2,444**  
 Type of class: Face-to-face Location: SWC Chula Vista  
 Room: 34-101

# Registered Nurse First Assistant– RNFA Program

**PRESENTED BY:** The National Institute of First Assisting, Inc. (NIFA) in partnership with the Southwestern College in San Diego California.

**NATIONAL STANDARDS:** Registered Nurse First Assistant (RNFA) program meets all national AORN Standards for RN First Assistant Education Programs (December 2013 Association of periOperative Registered Nurses) and has been accepted by the Competency Credentialing Institute (CCI) since 1998. RNFA curriculum is recognized by all 50 state nursing boards.

**ELIGIBILITY: RNs:** Registered Nurses who qualify for the program must be CNO or CNOR-eligible and must:

- Have a current unrestricted RN license.
- Be currently working full-time or part-time in perioperative nursing in the area of nursing education, administration, research or clinical practice.
- Have completed a minimum of 2 years and 2,400 hours of experience in perioperative nursing, with a minimum of 50% (1,200 hours) in the intraoperative setting.

RNs must submit proof of CNOR certification prior to graduating from the program.

**APRNs:** Board-certified or board eligible Advanced Practice Registered Nurses qualify for the program and the CNOR experience clause is waived. APRN's must submit proof of national certification prior to graduating from the program.

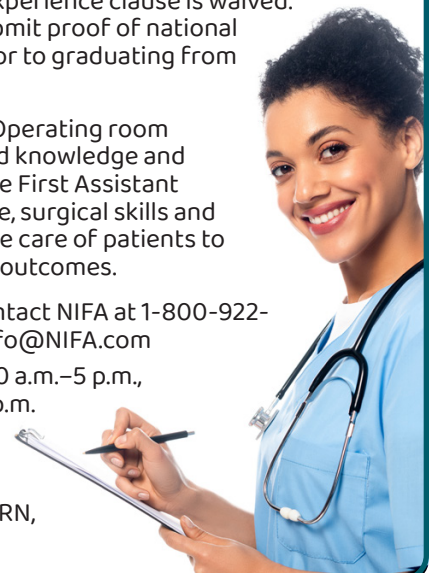
**Area of study:** Operating room nursing skills and knowledge and Registered Nurse First Assistant scope of practice, surgical skills and the perioperative care of patients to achieve optimal outcomes.

**MORE INFO:** Contact NIFA at 1-800-922-7747 or email: [info@NIFA.com](mailto:info@NIFA.com)

Mon.–Thurs., 7:30 a.m.–5 p.m.,  
 Fri., 7:30 a.m.–4 p.m.

To register visit  
[www.RNFA.org](http://www.RNFA.org)

Jennifer Curran RN,  
 CNOR, CRNFA





## Business

### 💰 CALIFORNIA STATE NOTARY PUBLIC SEMINAR

The demand for professional notaries in California is growing! Join this dynamic profession in high demand within the fields of finance, real estate, business, and law. Increase your employment skills and learn how to better protect your employer's business. This class will provide the new or previously commissioned notary public with the education and skills to pass the state examination, detect fraud, and become successful in a new career. If you are interested in taking the exam, please bring a check payable to the Secretary of State, together with required identification: either a California driver's license or California ID. You must not have had a felony conviction to take this exam.

**Instructor: Thomas Peavyhouse, 7 hours.**

#### FALL

**CS 14-72 Sat. Oct. 24 8 a.m.–4 p.m. Fee: \$129**  
**Class type:** Face-to-face      **Location:** SWC Chula Vista  
 Room: TBA

*\*Optional State exam scheduled 4–6 p.m. for an additional \$40 fee. Fee is paid on the day of the class via check.*

### 💰 CERTIFICATE IN NONPROFIT MANAGEMENT

Lead the way to justice and change! Learn essential tools and frameworks of nonprofit management, including board development, financial management, fundraising, marketing, program evaluation, and nonprofit law. All taught through a cutting-edge program that equips you with the skills to carry out your mission and support your cause and community in the most effective ways. In this Nonprofit Management program, you'll acquire a comprehensive understanding of their best practices in nonprofit management and frameworks that will help you build more equitable, effective organizations.

**Instructor: Victoria Philips, 12 hours.**

#### ☀️ SUMMER

**CS 336-71 Sat Jul. 11-25 9–11 a.m. Fee: \$335**  
**Class type:** Synchronous "Live" Online

#### FALL

**CS 336-72 Sat Sept. 19–Oct. 3 9–11 a.m. Fee: \$335**  
**Class type:** Synchronous "Live" Online



### 💰 NEW! GRANT WRITING FOR NONPROFIT ORGANIZATIONS

An online course provides participants with practical skills needed to research, develop, and write competitive grant proposals. Topics may include identifying funding opportunities, developing project narratives, constructing program budgets, aligning grant proposals with organizational goals, and understanding common grant requirements. Participants will gain an overview of the grant development process and practical tools to support successful grant writing and fundraising efforts.

**Instructor: Victoria Philips, 16 hours.**

#### ☀️ SUMMER

**CS 335-01 TTh Aug. 11–Sep. 3 5:30–7:30 p.m. Fee: \$335**  
**Class type:** Synchronous "Live" Online

#### FALL

**CS 335-02 TTh Oct. 3–Nov. 5 5:30–7:30 p.m. Fee: \$335**  
**Class type:** Synchronous "Live" Online

### 💰 LOAN SIGNING-NOTARY PUBLIC SEMINAR

The California real estate industry is in need of Notary Public Loan Signing Specialists. This course will provide students with information on the duties and responsibilities of the Loan Signing Specialist, which will enable students to acquire the essential knowledge and skills to be successful in the career field. After completing the course, students will be able to identify and understand the different types of loan documents with sufficient knowledge to explain them to the client, if requested. The course will conclude with an open book final exam, proctored by the instructor. **This course is for you if you are a notary public, are in the process of becoming a notary public or are just interested in taking the course for personal interest or for self-improvement. If you are planning to become a Notary Public you must take the California State Notary Public Seminar.**

**Instructor: Thomas Peavyhouse, 7 hours.**

#### FALL

**CS 143-68 Sun. Oct. 25 9 a.m.–4 p.m. Fee: \$159**  
**Class type:** Face-to-face      **Location:** SWC Chula Vista  
 Room: TBA



## Tax Preparation Certificate of Completion

(Complete NC 113 and NC 114)

### TAX PREPARATION/INCOME TAX COURSE I

Introduces Part I of a 60-hour program that teaches students how to prepare their own state and federal income tax returns and introduces them to the career field of a registered tax preparer in the State of California. Successful completion of Part I and Part II enables a student to receive a Certificate of Completion. **Required textbooks: available at the Bookstore, to be purchased by the first day of class.**  
**No fee, 30 hours.**

#### ☀️ SUMMER

**NC 113-60 TTh Jun. 9–Jul. 9 5:30–9 p.m.**  
Class type: Face-to-face Location: SWC Chula Vista  
**Instructor: D. Yager** Room: 59A-102  
*No Class: 6/18, 7/2*

#### 🍂 FALL

**NC 113-86 MW Sep. 14–Oct. 14 5:30–8:20 p.m.**  
Class type: Face-to-face Location: HECSY  
**Instructor: F. Kasule** Room: 5201

**NC 113-75 SatSun Sep. 12–Oct. 11 9–11:50 a.m.**  
Class type: Face-to-face Location: HECNC  
**Instructor: F. Kasule** Room: 7210

**NC 113-60 TTh Sep. 22–Oct. 22 6–8:50 p.m.**  
Class type: Face-to-face Location: SWC Chula Vista  
**Instructor: D. Yager** Room: 59A-102

**NC 113-01 MW Sep. 28–Oct. 28 9–11:50 a.m.**  
Class type: Face-to-face Location: SWC Chula Vista  
**Instructor: D. Yager** Room: 59A-102



### TAX PREPARATION/INCOME TAX COURSE II

Introduces Part II of a comprehensive 60-hour program that covers everything students need to know to prepare correct tax returns. Emphasizes how a student will learn a marketable skill that will enable him/her to prepare taxes for other people and earn extra income. Successful completion enables the student to receive a Certificate of Completion that will make them eligible to become a registered tax preparer in the State of California. **Required textbooks: available at the Bookstore, to be purchased by the first day of class.**  
**No fee, 30 hours.**

#### ☀️ SUMMER

**NC 114-60 TTh Jul. 14–Aug. 6 5:30–9 p.m.**  
Class type: Face-to-face Location: SWC Chula Vista  
**Instructor: D. Yager** Room: 59A-102

#### 🍂 FALL

**NC 114-86 MW Oct. 19–Nov. 23 5:30–8:20 p.m.**  
Class type: Face-to-face Location: HECSY  
**Instructor: F. Kasule** Room: 5201  
*No Class: 11/11*

**NC 114-76 SatSun Oct. 17–Nov. 15 9–11:50 a.m.**  
Class type: Face-to-face Location: HECNC  
**Instructor: F. Kasule** Room: 7210

**NC 114-01 MW Nov. 2–Dec. 7 9–11:50 a.m.**  
Class type: Face-to-face Location: SWC Chula Vista  
**Instructor: D. Yager** Room: 59A-102  
*No Class: 11/11*

**NC 114-60 TTh Nov. 3–Dec. 8 6–8:50 p.m.**  
Class type: Face-to-face Location: SWC Chula Vista  
**Instructor: D. Yager** Room: 59A-102  
*No Class: 11/26*



## Business, Customer Service

### Certificate of Completion

(Complete: NC 1006, NC 1003 and NC 1073)

#### CUSTOMER SERVICE: DEALING WITH DIFFICULT PEOPLE

Introduces information and concepts about how conflict inhibits good business. Explores the causes and impact conflict can have on customer service. Reviews strategies and techniques for resolving tough issues and how to turn a difficult customer into a loyal one.

**No fee, 6 hours.**

#### FALL

**NC 1006-E5 TTh Nov. 10-12 8:30-11:20 a.m.**  
Class type: Face-to-face Location: SYAS  
**Instructor: M. Dullea**

**NC 1006-E6 TTh Nov. 10-12 8:30-11:20 a.m.**  
Class type: Face-to-face Location: SYAS  
**Instructor: TBA**

**NC 1006-E7 TTh Nov. 10-12 5:30-8:20 p.m.**  
Class type: Face-to-face Location: SYAS  
**Instructor: M. Dullea**

**NC 1006-E8 TTh Nov. 10-12 5:30-8:20 p.m.**  
Class type: Face-to-face Location: SYAS  
**Instructor: L. Hernandez**

#### CUSTOMER SERVICE: MASTERING COMMUNICATION

Introduces effective and positive communication that is key to customer service success. Focuses on the communication process including common barriers to effective communication. Covers verbal and nonverbal communication, as well as listening skills. Explores and provides opportunity to practice the techniques of effective communication.

**No fee, 6 hours.**

#### FALL

**NC 1003-E5 TTh Aug. 25-27 8:30-11:20 a.m.**  
Class type: Face-to-face Location: SYAS  
**Instructor: B. Deyo**

**NC 1003-E6 TTh Aug. 25-27 8:30-11:20 a.m.**  
Class type: Face-to-face Location: SYAS  
**Instructor: M. Dullea**

**NC 1003-E7 TTh Aug. 25-27 5:30-8:20 p.m.**  
Class type: Face-to-face Location: SYAS  
**Instructor: M. Dullea**

**NC 1003-E8 TTh Aug. 25-27 5:30-8:20 p.m.**  
Class type: Face-to-face Location: SYAS  
**Instructor: L. Hernandez**



#### CUSTOMER SERVICE: THE RIGHT ATTITUDE

Examines how the right attitude has a positive impact on the workplace and our interactions with customers. Reviews how attitudes at work positively and negatively affect customer service, the company image, productivity, employee retention, and company growth. Explores techniques for maintaining a professional attitude.

**Instructor: M. Dullea, No fee, 6 hours.**

#### FALL

**NC 1073-E5 MW Oct. 12-14 8:30-11:20 a.m.**  
Class type: Face-to-face Location: SYAS

**NC 1073-E6 TTh Oct. 13-15 8:30-11:20 a.m.**  
Class type: Face-to-face Location: SYAS

**NC 1073-E7 TTh Oct. 13-15 5:30-8:20 p.m.**  
Class type: Face-to-face Location: SYAS

**NC 1073-E8 MW Oct. 12-14 5:30-8:20 p.m.**  
Class type: Face-to-face Location: SYAS

#### 💰 MAKE EXTRA INCOME AS A WHOLESALE AUTO DEALER FROM HOME

Come learn how to supplement your income by buying and selling wholesale cars as a home-based business. You will learn how and where to buy at wholesale price and eight selling techniques that create profit and cash flow. Learn how to get your auto dealer license in 15 days. Find out how and where to buy below wholesale prices and how to sell at retail prices. You will get a free list of 400+ dealer-only auctions in the USA where automobiles are sold below wholesale. This class is DMV approved. You will receive a DMV certificate of completion after you complete and pass the class exam. Benefits of a dealer license include dealer plates for vehicles that can be used for business and pleasure, auto parts and service at wholesale prices and sales tax exempt, ability to travel and do business in every state, import and export opportunities, and tax deductions.

**Instructor: Wayne Williams, 7 hours.**

#### ☀️ SUMMER

**CS 257-72 MT June 29-30 6-9 p.m. Fee: \$150**  
Class type: Synchronous "Live" Online

#### FALL

**CS 257-73 MT Nov. 9-10 6-9 p.m. Fee: \$150**  
Class type: Synchronous "Live" Online



## Education, Humanities, Social and Behavioral Sciences

### Infant, Child, and Adolescent Development Certificate of Completion (Complete NC 204, NC 205, NC 206 and NC 207)

#### A CAREGIVER'S GUIDE TO INFANTS AND TODDLERS

Introduces developmental milestones of infants and toddlers by examining social and emotional needs, how infants and toddlers learn, and physical growth and health. Explores topics for caregivers, childcare trainees, and parents/guardians such as meaningful interactions, creating safe, healthy, and nurturing environments, supporting skill and language development, and parenting styles.

**Instructor: V. Rodriguez-Operana,, No fee, 12 hours.**



**NC 204-60 T Sep. 1-Oct. 6 5-6:50 p.m.**  
Class type: Face-to-face Location: SWC Chula Vista  
Room: 54A-109

#### A CAREGIVER'S GUIDE TO PRESCHOOLERS

Introduces to caregivers, childcare trainees, and parents/guardians the developmental milestones and appropriate expectations for preschool-age children. Analyses their social-emotional needs, physical growth/health and how preschoolers learn and perceive the world around them.

**Instructor: V. Rodriguez-Operana, No fee, 12 hours.**



**NC 205-60 T Oct. 13-Nov. 17 5-6:50 p.m.**  
Class type: Face-to-face Location: SWC Chula Vista  
Room: 54A-109

#### A CAREGIVER'S GUIDE TO SCHOOL-AGE CHILDREN

Introduces to caregivers, childcare trainees, and parents/guardians the developmental milestones and appropriate expectations for school-age children. Identifies children's social-emotional needs, physical growth/health and how best to support success in their education.

**Instructor: D. Glover-Fanucchi, No fee, 12 hours.**



**NC 206-E2 TTh Oct. 13-29 3:15-5:05 p.m.**  
Class type: Face-to-face Location: MCS

**NC 206-E3 Th Oct. 15-Nov. 19 8:15-10:05 p.m.**  
Class type: Face-to-face Location: OES

#### A CAREGIVER'S GUIDE TO TEENS

Introduces to caregivers, childcare trainees, and parents/guardians the developmental milestones and appropriate expectations for school-age children. Identifies children's social-emotional needs, physical growth/health and how best to support success in their education.

**No fee, 12 hours.**



**NC 207-E1 MW Aug. 24-Sep. 14 9-10:50 a.m.**  
Class type: Face-to-face Location: SWPC  
**Instructor: V. Rodriguez-Operana**  
No Class: 9/7

**NC 207-E3 TTh Nov. 3-19 3:15-5:05 p.m.**  
Class type: Face-to-face Location: MCS  
**Instructor: D. Glover-Fanucchi**

#### APPLIED BEHAVIORAL ANALYSIS (ABA) TRAINING

Applied Behavior Analysis (ABA) training is crucial for those interested in starting their career in the fields of psychology, education, autism intervention, and behavioral therapy. This class will provide you with on-the-job skills and is intended for individuals interested in becoming behavior technicians and providers working with Autism Spectrum Disorder (ASD) populations. Whether in a classroom, clinical setting or at home, if you are looking to advance in the applied behavior analysis field, this training is for you!

**Instructor: Karina Percival, 24 hours. MS BCBA LBA**



**CS 441-67 TTh Jul. 06 - 25 5-7:30 p.m. Fee: \$150**  
**Sat 10 a.m.-1 p.m.**  
Class type: Face-to-face Location: SWC Chula Vista  
Room: 24-101



**CS 441-68 TTh Oct. 26-Nov. 8 5-7:30 p.m. Fee: \$150**  
**Sat 10 a.m.-1 p.m.**  
Class type: Face-to-face Location: SWC Chula Vista  
Room: TBA





### CHILD VISITATION MONITOR TRAINING COURSE

Are you looking for a career opportunity in which you can work within the community, gain valuable experience and make a difference in the lives of children and families? Consider becoming a professional Child Visitation Monitor. A position that is always in demand. The average starting rate for monitors is \$45-\$60 per hour. The monitor's responsibility is to ensure the safety and well-being of the children involved. This comprehensive course satisfies the State 24-hour training requirement. You will learn the California State policies and procedures as well as your role as a monitor. Upon completing the course, you will be able to begin working as an independent monitor which allows you to set your own schedule/hours, select which families you want to work with and decide what area you would like to work out of. You must be at least 21 years old and have a clean record to register for this course.

**Instructor: Jazmin Mundo, 24 hours.**

#### SUMMER

**CS 326-69 Th Aug. 13-27 8:30 a.m.-4:30 p.m. Fee: \$355**  
 Type of class: Synchronous "Live" Online

#### FALL

**CS 326-70 W-F Oct. 14-16 8:30 a.m.-4:30 p.m. Fee: \$355**  
 Type of class: Synchronous "Live" Online

## Training Opportunities for those with Disabilities

### BUILDING SOCIAL SKILLS FOR COLLEGE

Provides students with disabilities support in developing foundational social skills. Focuses on effective communication strategies and social cognition. Based on the PEERS school-based program, and modified for use with young adult learners, this course was designed for young adults with social and communication deficits.

**Instructor: D. Reyes, No fee, 48 hours.**

#### FALL

**NC 107-01 W Aug. 26-Dec. 9 1:30-4:20 p.m.**  
 Class type: Face-to-face Location: SWC Chula Vista  
 No Class: 11/11 Room: 59A-102

### STEPPING STONES TO SUCCESS IN THE WORKPLACE

Provides students with disabilities an overview of how to develop necessary soft skills for workplace purposes. Introduces communication, attitude, problem solving skills, and critical thinking techniques to prepare individuals for general workplace expectations. Exposes students to workplace ethics necessary for business interactions.

**Instructor: M. Pacheco, No fee, 48 hours.**

#### FALL

**NC 103-401 W Aug. 24-Dec. 13 11 a.m.-12:50 p.m.**  
 Class type: Synchronous "Live" Online  
 No Class: 11/11

## Applied Technology and Hospitality Management



### FORKLIFT CERTIFICATION

Gain the skills and certification needed to operate a forklift safely and efficiently in this hands-on training course. Our comprehensive program covers essential safety protocols, operational techniques, and equipment maintenance. Upon successful completion, you will receive a forklift operator certification recognized by industry standards. Perfect for those seeking to enhance their career opportunities or meet workplace safety requirements. This class includes lecture and hands-on training on forklift. \*Lecture is from 9-11 a.m., hands-on training will be provided the same day between 11 a.m.-5 p.m.

**Instructor: C. Bejar, 8 hours**

#### FALL

**CS-340-63 Sat Sept. 26 9 a.m.-4 p.m. Fee: \$145**  
 Class type: Face-to-face Location: SWC Chula Vista  
 Room: TBA

### AUTOMOTIVE TIRE SERVICE TRAINING PROGRAM

Start your career in the automotive industry with our Basic Automotive Tire Service Training Program! Jobs are currently available at many local employers such as Pep Boys, Discount Tire, O'Reilly and many other shops. This is a Tire Industry Association (TIA) skills (200-level) training and certificate program where you will learn the foundations of servicing tire and wheel assemblies. You will learn how to identify tire markings, tire and wheel removal and inspection, balance assembly and repair and much more. This is great for beginners or anyone interested in working in the auto servicing or repair industry. All students who successfully pass the program will be awarded a certificate from (TIA) that shows training in basic automotive tire service.

**Instructor: Greg Howe, 12 hours.**

#### FALL

**CS 338-63 Fri. Nov. 5-20 9 a.m.-12 p.m. Fee: \$205**  
 Class type: Face-to-face Location: SWC Chula Vista  
 Room: TBA



# New! Automotive Certificates of Completion

## NEW! Automotive Parts Specialist Certificate of Completion (Complete NC 344 and NC 345)

### PARTS ADVISOR I

Introduces students to the aftermarket wholesale and retail automobile parts industry and related workplace preparation. Focuses on general operations, customer relations and sales skills, vehicle system knowledge, catalog information, and inventory management and merchandising.

**Instructor: S. Perea, No Fee, 45 hours.**



**NC 344-01** TTh **Aug. 25–Dec. 8 8:30 a.m.–12:05 p.m.**  
Class type: Face-to-face Location: SWC Chula Vista  
Room: 47A-113

### PARTS ADVISOR II

Builds on Parts Advisor I basic knowledge of the aftermarket wholesale and retail automobile parts industry needs. Focuses on general automotive knowledge, proper vehicle identification, and preparation for the Automotive Service Excellence Examination (ASE) P2.

**Instructor: S. Perea, No Fee, 45 hours.**



**NC 345-01** TTh **Oct. 20–Dec. 8 8:30 a.m.–12:05 p.m.**  
Class type: Face-to-face Location: SWC Chula Vista  
Room: 47A-113  
No Class: 11/26

## NEW! Automotive Service Consultant Certificate of Completion (Complete NC 342 and NC 343)

### SERVICE ADVISOR I

Introduces students to the duties and responsibilities that an automotive service consultant/advisor performs in the workplace. Focuses on communication, product knowledge, and shop operations including service writing programs, parts expediting and technical tools and resources. This course aligns with ASE C1 Test task list.

**Instructor: S. Pera & B. Palmiter, No Fee, 45 hours.**



**NC 342-01** MW **Aug. 24–Oct. 12 1:20–4:55 p.m.**  
Class type: Face-to-face Location: SWC Chula Vista  
Room: 47A-126  
No Class: 9/7

### SERVICE ADVISOR II

Builds on Service Advisor I to expand student knowledge and understanding of duties and responsibilities of automotive service consultants/advisors. Introduces new topics related to communication, product knowledge, and shop operations including service writing programs, parts expediting and technical tools and resources. This course aligns with ASE C1 Test task list.

**Instructor: S. Pera & B. Palmiter, No Fee, 45 hours.**



**NC 343-01** MW **Oct. 19–Dec. 7 1:20–4:55 p.m.**  
Class type: Face-to-face Location: SWC Chula Vista  
Room: 47A-126  
No Class: 11/11

## NEW! Basics of Automotive Technology Certificate of Completion (Complete NC 340 and NC 341)

### BASIC AUTOMOTIVE SERVICE I

Introduces basic general automotive tool and shop equipment use, as well as general customer service skills. Focuses on classroom instruction providing automotive terminology and identification.

**Instructor: J. Santee & P. Gomez, No Fee, 45 hours.**



**NC 340-60** MW **Aug. 24–Oct. 12 5:15–8:50 p.m.**  
Class type: Face-to-face Location: SWC Chula Vista  
Room: 47A-113  
No Class: 9/7

### BASIC AUTOMOTIVE SERVICE II

Introduces basic general automotive maintenance of automobiles. Focuses on classroom instruction providing “how-to” information. Emphasizes hands-on lab activities for student mastery of basic skills.

**Instructor: J. Santee & P. Gomez, No Fee, 45 hours.**



**NC 341-60** MW **Oct. 19–Dec. 7 5:15–8:50 p.m.**  
Class type: Face-to-face Location: SWC Chula Vista  
Room: 47A-113  
No Class: 11/11



## Drone Technology and Applications Certificate of Completion (Complete NC 328 and NC 327)



### INTRODUCTION TO DRONE TECHNOLOGY AND APPLICATIONS

Introduces small, remotely operated aircraft systems (drones), including applications, safety, maintenance, mission planning, flying, and data acquisition (multispectral images, photos, and videos). (Same as AERO 108, GEOG 108, FTMA 108, and ART 188).

**Instructor: M. Truitt, No Fee, 108 hours.**

#### FALL

**NC 328-602 W**      **Aug. 24-Dec. 13 8:15 a.m.-12:25 p.m.**  
 Class type: Hybrid      Location: SWC Chula Vista  
 No Class: 11/11      Room: 60-249

**NC 328-601 F**      **Aug. 28-Dec. 13 8:35 a.m.-12:45 p.m.**  
 Class type: Hybrid      Location: SWC Chula Vista  
 No Class: 11/27      Room: 60-249

### REMOTE PILOT GROUND SCHOOL

Equips students with knowledge about the regulations and procedures governing the safe and legal operation of small remotely operated aircraft systems (sUAS), commonly referred to as “drones.” Coincides with the knowledge areas in the Federal Aviation Administration’s (FAA’s) Part 107 knowledge test for a Remote Pilot Certificate. Intended to prepare students for the FAA written examination required for students to become commercial sUAS pilots.

**Instructor: K. Yanow, No fee, 18 hours.**

#### FALL

**NC 327-501**      **Aug. 24-Oct. 16**  
 Class type: Online



### NEW! LANDSCAPE CONSTRUCTION

Covers proper methods of estimating, laying out, and installing landscape hardscape features, including concrete, paver patios, walkways, garden retaining walls, wood decks and fences, overhead shade structures, benches, and planters. Includes proper knowledge and use of building materials. (Same as LNT 124)

**Instructor: M. Valen, No Fee, 108 hours.**

#### FALL

**NC 3083-51 Sat**      **Aug. 29-Dec. 12 8 a.m.-3:50 p.m.**  
 Class type: Face-to-face      Location: SWC Chula Vista  
 No Class: 11/28      Room: TBA



## ONLINE CAREER TRAINING PROGRAMS



Southwestern College partners with Ed2Go to provide access to a variety of online career training programs designed to help individuals build new workforce skills or advance in their current careers. These programs are delivered fully online, are self-paced, and allow students to begin at any time. Upon successful completion of the required coursework, participants may receive a Certificate of Participation recognizing completion of the training program offered through Ed2Go in partnership with Southwestern College. Please note that these programs are offered through a third-party training provider (Ed2Go) and are not Southwestern College credit or noncredit courses. These programs do not award college credit, do not transfer for credit, and are not eligible for federal or state financial aid. Tuition is paid through the Ed2Go platform. Payment plans may be available through Ed2Go at checkout, and additional financial assistance opportunities may be available for members of the military community. To explore available programs, visit: [careertraining.swccd.edu](http://careertraining.swccd.edu)



# College & Career Readiness

**Grow Your Basic Skills:** Build the fundamental skills you need to advance your life, prepare for college and succeed in the workplace. Foundational courses are available in math, reading, and critical thinking, and more!





## College and Career Planning

### CAREER RESEARCH-USING THE INTERNET

Utilizes the Internet as an important tool in career planning, career research, and job search. Includes specific Internet sites, tips on the use of search engines, creating folders to keep track of useful sites, techniques to conduct career research, and considerations when applying for jobs online are explored.

**Instructor: J. Reyes, No fee, 3 hours.**

#### FALL

**NC 88-60 T Dec. 1 5-7:50 p.m.**  
 Class type: Face-to-face Location: SWC Chula Vista  
 Room: 54A-109



### SUCCESS IN NURSING

Designed to assist enrolled nursing students to be successful in the VN and ADN programs. Included are test-taking strategies as well as basic mathematics, reading comprehension, time management, communication, and critical thinking as they apply to the nursing curriculum.

**Instructor: E. Hughes, No fee, 24 hours.**

#### SUMMER

**NC 1033-530 Jun. 8-Jul. 16**  
 Class type: Online  
 No Class: 6/18, 6/19, 7/2, 7/4

#### FALL

**NC 1033-530 Aug. 10-Sep. 18**  
 Class type: Online  
 No Class: 9/7



### USING YOUR FOREIGN DEGREE IN THE UNITED STATES

Provides graduates of foreign colleges and/or universities with essential information for exploring their options for using their degrees in the United States. Includes the U.S. educational system, processes for transcripts and/or diplomas, state licensing and credentialing considerations, English language proficiency, professional networking, graduate study options, job search and career planning services.

**Instructor: D. Edwards, No fee, 3 hours.**

#### FALL

<b>NC 92-E3</b>	<b>Th</b>	<b>Sep. 3</b>	<b>2:45-5:35 p.m.</b>
Class type: Face-to-face			Location: HES
<b>NC 92-E7</b>	<b>W</b>	<b>Sep. 16</b>	<b>9-11:50 a.m.</b>
Class type: Face-to-face			Location: CVAS
<b>NC 92-E9</b>	<b>W</b>	<b>Oct. 21</b>	<b>5:30-8:20 p.m.</b>
Class type: Face-to-face			Location: SYAS
<b>NC 92-E1</b>	<b>W</b>	<b>Nov. 4</b>	<b>9-11:50 a.m.</b>
Class type: Face-to-face			Location: NCAS
<b>NC 92-E2</b>	<b>W</b>	<b>Dec. 9</b>	<b>5:30-8:20 p.m.</b>
Class type: Face-to-face			Location: MAS



## Math Skill Development

### ALGEBRA REFRESHER LEVEL 1

Provides an individualized program of instruction to review various topics in Elementary Algebra. Consists of direct instruction as well as computer assisted instruction to identify student level of knowledge and refresh those concepts identified as needed for each student. Serves students who need just-in-time course support, and/or students who need to prepare for algebra-based exams.

**Instructor: M. Garcia, No fee, 9 hours.**

#### SUMMER

**NC 146-501** **Jun. 15-29**  
Class type: Online  
No Class: 6/18, 6/19

**NC 146-502** **Jul. 1-16**  
Class type: Online  
No Class: 7/2, 7/4

#### FALL

**NC 146-501** **Sep. 1-18**  
Class type: Online  
No Class: 9/7

**NC 146-502** **Sep. 21-Oct. 9**  
Class type: Online

**NC 146-503** **Oct. 12-30**  
Class type: Online



### ALGEBRA REFRESHER LEVEL 2

Provides an individualized program of instruction to review various topics in Intermediate Algebra. Consists of direct instruction as well as computer assisted instruction to identify student level of knowledge and refresh those concepts identified as needed for each student. Serves students who need just-in-time course support, and/or students who need to prepare for algebra-based courses or exams.

**No fee, 9 hours.**

#### SUMMER

**NC 147-501** **Jul. 1-16**  
Class type: Online  
**Instructor: M. Garcia**  
No Class: 7/2, 7/4

**NC 147-502** **Jul. 23-Aug. 6**  
Class type: Online  
**Instructor: K. Cliffe**

#### FALL

**NC 147-501** **Sep. 1-18**  
Class type: Online  
**Instructor: Y. Francis**  
No Class: 9/7

**NC 147-504** **Nov. 2-20**  
Class type: Online  
**Instructor: Y. Francis**  
No Class: 11/11

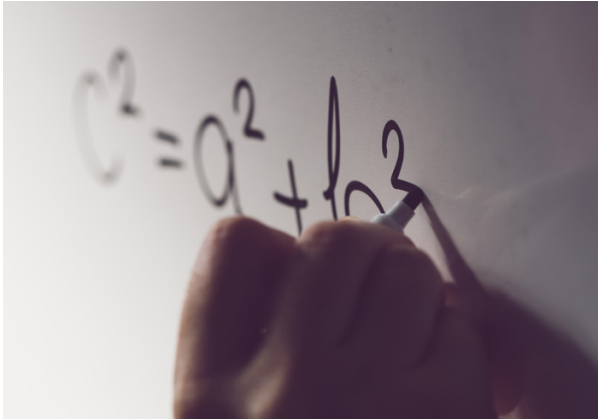
### ELEMENTARY AND INTERMEDIATE ALGEBRA REFRESHER

Provides individualized instruction of topics in Elementary and Intermediate Algebra. Consists of direct instruction and computer assisted instruction to identify levels of knowledge and refresh concepts as needed for each student. Serves students in need of just-in-time course support, and/or students who are preparing for algebra based exams.

**Instructor: M. Garcia, No fee, 18 hours.**

#### FALL

**NC 1148-502** **Sep. 21-Oct. 30**  
Class type: Online



### TRIGONOMETRY REFRESHER

Provides a review to students who wish to refresh their trigonometry skills. Includes topics such as trigonometric functions; radian measure of angles; graphs of sine, cosine, and tangent; trigonometric equations and inverse trigonometric equations; and law of sines and cosines. Consists of personalized computer-assisted instruction to refresh those concepts identified as needed for each student.

**Instructor: K. Eclar, No fee, 9 hours.**

#### SUMMER

**NC 1104-501**

**Jul. 1-16**

Class type: Online

No Class: 7/2, 7/4

#### FALL

**NC 1104-501**

**Sep. 1-18**

Class type: Online

No Class: 9/7

**NC 1104-502**

**Sep. 21-Oct. 9**

Class type: Online

# ENERGY EFFICIENCY TRAINING PROGRAM

## COMING SOON!

Explore upcoming training opportunities in the growing field of energy efficiency, including HVAC and lighting systems. This program is being developed in partnership with industry professionals to support career pathways in clean energy and building efficiency.

Program details, schedule, and enrollment information are currently in development.

**Community Education Programs**

**Southwestern College**

customizedtraining@swccd.edu

(619) 482-6533

**[www.swccd.edu/ContinuingEd](http://www.swccd.edu/ContinuingEd)**





## Computer Skills to Begin or Advance Your Career

### Certificate of Completion in Beginning Office Support Fundamentals

(Complete all of the following courses: (NC 200, NC 198 and NC 185)

#### INTRODUCTION TO BASIC MICROSOFT EXCEL SPREADSHEETS

Reviews the basics of worksheet use: design, data entry, formulas, and functions. Focuses on how to convert your data into meaningful and high-impact charts.

**No fee, 8 hours.**

##### SUMMER

**NC 24-01** TTh Jul. 14-23 12-1:50 p.m.  
Class type: Face-to-face Location: SWC Chula Vista  
Instructor: B. Deyo Room: 25-211

##### FALL

**NC 24-50** Sat Oct. 31-Nov. 21 9-10:50 a.m.  
Class type: Face-to-face Location: SWC Chula Vista  
Instructor: L. Hernandez Room: 25-211

#### INTRODUCTION TO BASIC POWERPOINT

Provides students with the basic skills to create and format a PowerPoint slide presentation.

**Instructor: B. Deyo, No fee, 8 hours.**

##### FALL

**NC 185-E1** MT Nov. 9-17 9-10:50 a.m.  
Class type: Face-to-face Location: SWPC

#### INTRODUCTION TO COMPUTERS

Covers basic computer skills such as proper start-up and shutdown procedures; use of mouse and keyboard commands; basic file management; creating, saving, and printing a document using word-processing software; e-mails; and basic Internet searches.

**No fee, 6 hours.**

##### SUMMER

**NC 1051-E1** Sat Jun. 13-27 1-2:50 p.m.  
Class type: Face-to-face Location: IBBL  
Instructor: L. Hernandez

##### FALL

**NC 1051-E2** TTh Sep. 1-8 3:15-5:05 p.m.  
Class type: Face-to-face Location: LAES  
Instructor: R. Montes de Oca

**NC 1051-75** Sat Sep. 19-Oct. 3 12-1:50 p.m.  
Class type: Face-to-face Location: HECNC  
Instructor: L. Hernandez Room: 7210



#### INTRODUCTION TO BASIC KEYBOARDING

Beginning students will learn how to correctly keyboard the alphabet and punctuation keys with an emphasis on technique, accuracy, and speed

**Instructor: B. Deyo, No fee, 8 hours.**

##### FALL

**NC 200-80** F Oct. 2-23 10-11:50 a.m.  
Class type: Face-to-face Location: HECYSY  
Room: 5201

**NC 200-E1** MT Oct. 12-20 9-10:50 a.m.  
Class type: Face-to-face Location: SWPC

#### INTRODUCTION TO BASIC MICROSOFT WORD

Provides students with the basic skills that are essential to format, edit, and save documents using Microsoft Word.

**No fee, 8 hours.**

##### SUMMER

**NC 198-E1** Sat Jul. 11-Aug. 1 1-2:50 p.m.  
Class type: Face-to-face Location: IBBL  
Instructor: L. Hernandez

##### FALL

**NC 198-50** Sat Sep. 12-Oct. 3 9-10:50 a.m.  
Class type: Face-to-face Location: SWC Chula Vista  
Room: 26-109  
Instructor: L. Hernandez

**NC 198-E7** MT Oct. 26-Nov. 3 9-10:50 a.m.  
Class type: Face-to-face Location: SWPC  
Instructor: B. Deyo



# English as a Second Language (ESL)

**Grow Your Language Skills:** Improve your English skills in a safe and secure environment. Learn from faculty who care about your growth. Beginning to advanced classes are offered day, night and online.



## English as a Second Language (ESL)



### Certificate of Completion in Entry Level ESL

(Complete NC 108, NC 109 and NC 110)



### ESL College Readiness

(Complete NC 109, NC 220 and NC 221)



### ESL Conversation Skills Development

(Complete NC 109, NC 110 and NC 222)



### ESL Workplace Literacy Skills

(Complete NC 109, NC 110 and NC 221)



### BASIC ESL I

Introduces activities at a novice-low/A1 level, encouraging independent learning. Promotes the development of students' ability to learn and engage in goal-directed behaviors, as well as English language grammar, reading, listening, conversation, and writing competence. First of three levels of general English. **No fee, 36 hours.**

#### SUMMER

**NC 108-501** Jun. 8-25

Class type: Online

**Instructor: C. O'Gorman Fazzolari**

*No Class: 6/18, 6/19*

**NC 108-01** MTWTh Jun. 8-Jul. 7 9-11:05 a.m.

Class type: Face-to-face Location: SWC Chula Vista

**Instructor: B. Zemlick**

Room: 24-101

*No Class: 6/18, 7/2*

#### FALL

**NC 108-502** Aug. 24-Sep. 25

Class type: Online

**Instructor: C. Ross**

*No Class: 9/7*

**NC 108-03** MTWTh Aug. 24-Sep. 28 9-10:30 a.m.

Class type: Face-to-face Location: SWC Chula Vista

**Instructor: TBA**

Room: 53A-116

*No Class: 9/7*

**NC 108-E7** TTh Aug. 25-Oct. 22 8:15-10:30 a.m.

Class type: Face-to-face

Location: RICE

**Instructor: S. Cervantes**

*No Class: 9/22, 9/24, 9/29, 10/1*

**NC 108-86** TTh Aug. 25-Sep. 24 5:30-8:50 p.m.

Class type: Face-to-face

**Instructor: G. Tufekei**

Location: HECSY

Room: 5205

**NC 108-E2** TTh Aug. 25-Oct. 22 6-7:50 p.m.

Class type: Face-to-face

**Instructor: D. Torres**

Location: SMLC

**NC 108-E1** W Aug. 26-Dec. 9 10 a.m.-12:10 p.m.

Class type: Face-to-face

**Instructor: M. Alca**

*No Class: 11/11*

Location: SDSY

**NC 108-E3** WF Aug. 26-Oct. 14 1:30-3:40 p.m.

Class type: Face-to-face

**Instructor: D. Torres**

Location: MOLI

**NC 108-80** F Aug. 28-Dec. 11 8:30-10:40 a.m.

Class type: Face-to-face

**Instructor: S. Kading**

*No Class: 11/27*

Location: HECSY

Room: 5205

**NC 108-503** Sep. 28-Oct. 31

Class type: Online

**Instructor: C. Ross**

**NC 108-E6** MF Oct. 5-Dec. 11 9-10:50 a.m.

Class type: Face-to-face

**Instructor: M. Alca**

*No Class: 11/23, 11/27*

Location: CES

**NC 108-E5** TTh Oct. 13-Dec. 3 9-11:15 a.m.

Class type: Face-to-face

**Instructor: TBA**

*No Class: 11/24, 11/26*

Location: ROFC



### BASIC ESL II

Continues activities at a novice-mid/A1 level, encouraging independent learning. Promotes the development of students' ability to learn and engage in goal-directed behaviors, as well as English language grammar, reading, listening, conversation, and writing competence. Second of three levels of general English.

**No fee, 36 hours.**

#### SUMMER

**NC 109-86 MW Jun. 8–Jul. 6 5–8:50 p.m.**  
 Class type: Face-to-face Location: HECSY  
 Room: 5205  
**Instructor: C. Palumbo**

**NC 109-80 TTh Jun. 9–Jul. 9 9 a.m.–1:15 p.m.**  
 Class type: Face-to-face Location: HECSY  
 Room: 5205  
**Instructor: E. Rodriguez**  
*No Class: 6/18, 7/2*

**NC 109-501 Jun. 29–Jul. 16**  
 Class type: Online  
**Instructor: N. Bartels**  
*No Class: 7/2, 7/4*

**NC 109-01 MTWTh Jul. 8–Aug. 5 9–10:50 a.m.**  
 Class type: Face-to-face Location: SWC Chula Vista  
 Room: 24-101  
**Instructor: B. Zemlick**

#### FALL

**NC 109-80 F Aug. 28–Dec. 11 10:50 a.m.–1 p.m.**  
 Class type: Face-to-face Location: HECSY  
 Room: 5205  
**Instructor: S. Cervantes**  
*No Class: 11/27*

**NC 109-581 Sep. 29–Nov. 3**  
 Class type: Online  
**Instructor: C. Ross**

**NC 109-86 TTh Sep. 29–Oct. 29 5:30–8:50 p.m.**  
 Class type: Face-to-face Location: HECSY  
 Room: 5205  
**Instructor: G. Tufekei**

**NC 109-01 TTh Oct. 6–Dec. 8 9–10:50 a.m.**  
 Class type: Face-to-face Location: SWC Chula Vista  
 Room: 24-104  
**Instructor: S. Brighenti**  
*No Class: 11/26*

**NC 109-E2 TTh Oct. 13–Dec. 8 8:15–10:25 a.m.**  
 Class type: Face-to-face Location: LOMA  
**Instructor: N. Bartels**  
*No Class: 11/24, 11/26*

**NC 109-E10 TTh Oct. 13–Dec. 3 8:15–10:30 a.m.**  
 Class type: Face-to-face Location: ROFC  
**Instructor: D. Torres**  
*No Class: 11/24, 11/26*

### BASIC ESL III

Continues activities at a novice-high/A2 level, encouraging independent learning. Promotes the development of students' ability to learn and engage in goal-directed behaviors, as well as English language grammar, reading, listening, conversation, and writing competence. Third of three levels of general English.

**No fee, 36 hours.**

#### SUMMER

**NC 110-86 MW Jul. 8–Aug. 5 5–8:50 p.m.**  
 Class type: Face-to-face Location: HECSY  
 Room: 5205  
**Instructor: W. Diaz**

**NC 110-80 TTh Jul. 14–Aug. 6 9 a.m.–1:15 p.m.**  
 Class type: Face-to-face Location: HECSY  
 Room: 5205  
**Instructor: C. Cano**

**NC 110-501 Jul. 20–Aug. 6**  
 Class type: Online  
**Instructor: S. Brighenti**

#### FALL

**NC 110-581 Aug. 24–Dec. 13**  
 Class type: Online  
**Instructor: G. Galvin**  
*No Class: 9/7, 11/11, 11/26, 11/27*

**NC 110-E5 TTh Aug. 25–Oct. 22 6–7:50 p.m.**  
 Class type: Face-to-face Location: SMLC  
**Instructor: M. Weaver**

**NC 110-80 F Aug. 28–Dec. 11 1:10–3:20 p.m.**  
 Class type: Face-to-face Location: HECSY  
 Room: 5205  
**Instructor: C. Cano**  
*No Class: 11/27*

**NC 110-E1 TTh Oct. 13–Dec. 3 3:15–5:30 p.m.**  
 Class type: Face-to-face Location: NICO  
**Instructor: M. Weaver**  
*No Class: 11/24, 11/26*

**NC 110-03 MTWTh Nov. 3–Dec. 9 9–10:30 a.m.**  
 Class type: Face-to-face Location: SWC Chula Vista  
 Room: 53A-116  
**Instructor: TBA**  
*No Class: 11/11, 11/26*

**NC 110-86 TTh Nov. 3–Dec. 8 5:30–8:50 p.m.**  
 Class type: Face-to-face Location: HECSY  
 Room: 5205  
**Instructor: TBA**  
*No Class: 11/26*

**NC 110-502 Nov. 5–Dec. 10**  
 Class type: Online  
**Instructor: E. Pumpelly**  
*No Class: 11/11, 11/26, 11/27*



## COMPUTERS AND TECHNOLOGY FOR ESL

Provides the linguistic and basic technology skills English as a Second Language (ESL) learners need in order to be able to succeed in ESL classes, other classes, and in everyday life.

**Instructor: S. Cervantes, No fee, 36 hours.**

### FALL

**NC 221-60 Sat Sep. 5–Dec. 12 10:30 a.m.–12:50 p.m.**  
Class type: Face-to-face Location: SWC Chula Vista  
No Class: 11/28 Room: 24-101

## ESL CONVERSATION

Develops listening, speaking, pronunciation, and vocabulary. Explores different aspects of local and student cultures in social and transactional conversations through the use of different media (songs, short videos, social media, etc.) as learning tools. Recommended for students with novice-high proficiency or higher according to California Pathways or A2 or higher according to the Common European Framework of Reference for Languages.

**No fee, 36 hours.**

### SUMMER

**NC 222-E1 TTh Jun. 9–Aug. 4 6–8:10 p.m.**  
Class type: Face-to-face Location: SMLC  
**Instructor: C. Beal**  
No Class: 6/18, 7/2

### FALL

**NC 222-01 MW Aug. 24–Dec. 2 10:25–11:30 a.m.**  
Class type: Face-to-face Location: SWC Chula Vista  
**Instructor: E. Santana** Room: 53A-107  
No Class: 9/7, 11/11

**NC 222-460 MW Aug. 31–Dec. 9 7–8:05 p.m.**  
Class type: Synchronous “Live” Online  
**Instructor: G. Galvin**  
No Class: 9/7, 11/11

**NC 222-E1 TTh Oct. 13–Dec. 8 8:15–10:25 a.m.**  
Class type: Face-to-face Location: PES  
**Instructor: TBA**  
No Class: 11/24, 11/26

**NC 222-E2 TTh Oct. 13–Dec. 8 8:15–10:25 a.m.**  
Class type: Face-to-face Location: HES  
**Instructor: TBA**  
No Class: 11/24, 11/26

## ESL FOR FAMILY LITERACY

Develops oral and written communication skills in standard English within the context of child care, child rearing, and parenting. Strengthens listening, speaking, reading, and writing skills useful for communicating with and about children at different stages of development on topics including day-to-day care, health, education, and safety. This course is intended for non-native speakers of English who are parents, grandparents, and child care providers. This course is recommended for non-native speakers at novice-high level or higher according to California Pathways or A2 or higher according to the Common European Framework of Reference for Languages.

**No fee, 36 hours.**

### FALL

**NC 223-E1 F Aug. 28–Dec. 11 9–11:30 a.m.**  
Class type: Face-to-face Location: SYSD1  
**Instructor: P. Kim**  
No Class: 9/25, 10/02, 11/27

**NC 223-E3 MF Oct. 5–Dec. 11 9–10:50 a.m.**  
Class type: Face-to-face Location: CES  
**Instructor: C. Yildiz**  
No Class: 11/23, 11/27

**NC 223-E2 TTh Oct. 13–Dec. 8 8:15–10:25 a.m.**  
Class type: Face-to-face Location: FCS  
**Instructor: C. Yildiz**  
No Class: 11/24, 11/26

## TRANSITIONING TO COLLEGE ESL

Prepares ESL students for credit college courses. Provides ESL students with language needed to navigate college applications, registration, assessment, course selection, and college study. Recommended for students at a novice-high level of English or higher, according to California Pathways.

**Instructor: D. Torres, No Fee, 36 hours.**

### FALL

**NC 220-02 F Sep. 18–Dec. 11 9–11:50 a.m.**  
Class type: Face-to-face Location: SWC Chula Vista  
No Class: 11/27 Room: 37-101



# Exploration and Personal Growth

**Keep Growing:** Join other lifelong learners in classes designed to help you build skills, achieve wellness, and find fulfillment. Classes are offered at a variety of locations throughout the community.



## Life Enrichment for Older Adults

### ART THERAPY

Focuses on the use of art as a creative expression and a therapeutic process. Utilizes a variety of art media to promote self-expression, to develop coping skills, and to mediate emotional and physical challenges and limitations. Designed for older adults, this course is also appropriate for anyone who wants to enhance the quality of their life.

**Instructor: A. Bejarano, No fee, 12 hours.**

#### SUMMER

**NC 1053-70 M Jun. 8-29 9-11:50 a.m.**  
Class type: Face-to-face Location: HECNC  
Room: 7203

**NC 1053-E1 Th Jun. 11-Jul. 30 1:30-3:20 p.m.**  
Class type: Face-to-face Location: IBSC  
*No Class: 6/18, 7/2*

#### FALL

**NC 1053-E3 T Aug. 25-Sep. 29 2-3:50 p.m.**  
Class type: Face-to-face Location: MVC

**NC 1053-E1 Th Sep. 3-Oct. 8 1:30-3:20 p.m.**  
Class type: Face-to-face Location: IBSC

**NC 1053-E7 F Sep. 4-Oct. 9 2-3:50 p.m.**  
Class type: Face-to-face Location: OMNL

**NC 1053-75 Sun Sep. 20-Oct. 25 11 a.m.-12:50 p.m.**  
Class type: Face-to-face Location: HECNC  
Room: 7203

**NC 1053-E4 T Oct. 6-Nov. 10 2-3:50 p.m.**  
Class type: Face-to-face Location: MVC

**NC 1053-E2 Th Oct. 15-Nov. 19 1:30-3:20 p.m.**  
Class type: Face-to-face Location: IBSC

**NC 1053-E11 F Oct. 16-Nov. 20 2-3:50 p.m.**  
Class type: Face-to-face Location: OMNL



### BUDGET AND HOME ENERGY MANAGEMENT

Designed for individuals who would like to take control of their finances, and minimize debt and maximize savings and investments. Covers financial goal setting, money management, spending plan, expense recordkeeping, identity theft, credit and credit repair, ways to earn extra income, energy management, energy conservation, meter reading, and available community resources.

**Instructor: R. Corpron, No fee, 5.5 hours.**

#### FALL

**NC 10-50 Sat Sep. 26-Oct. 3 8-10:25 a.m.**  
Class type: Face-to-face Location: SWC Chula Vista  
Room: 25-106

### CONCERT BAND I

Provides the opportunity for older adult woodwind, brass and percussion instrumentalists to perform in a beginning-level concert band. Explores various styles of band literature including classical, contemporary, popular, and new music compositions.

**Instructor: B. Mansfield, No fee, 72 hours.**

#### SUMMER

**NC 3080-60 T Jun. 16-Aug. 6 12-5:10 p.m.**  
**Th Jun. 16-Aug. 6 6-10:30 p.m.**  
Class type: Face-to-face Location: SWC Chula Vista  
*No Class: 6/18, 7/2* Room: 85-101

### CONCERT CHOIR I

Provides a choral ensemble for older adult music students with aural and score analysis of choral literature from traditional classics to the present. Emphasizes historical context, performance practice, style, and interpretation at the beginning level. Public performance required.

**Instructor: T. Burkland, No fee, 72 hours.**

#### SUMMER

**NC 80-60 TWTh Jun. 16-Aug. 5 6-9:10 p.m.**  
Class type: Face-to-face Location: SWC Chula Vista  
*No Class: 6/18, 7/2* Room: 85-101



### CREATING ART FROM EVERYDAY OBJECTS

Techniques to create gifts and decorations from common objects found around the home. Covers paper collage, basic stenciling, and some rubber stamping.

**Instructor: A. Bejarano, No fee, 12 hours.**

#### ☀️ SUMMER

**NC 1001-70 W Jun. 10–Jul. 29 9–10:50 a.m.**  
 Class type: Face-to-face Location: HECNC  
 Room: 7203

#### 🍂 FALL

**NC 1001-75 Sun Sep. 27–Nov. 22 9–10:45 a.m.**  
 Class type: Face-to-face Location: HECNC  
 Room: 7203



### ORGANIZE YOUR LIFE AND HAVE MORE TIME FOR FUN

Provides instruction on how to organize your life so you have time to do the things you really want to do. Increases quality time through techniques and strategies to organize paperwork, clutter, and finances. Emphasizes overcoming procrastination.

**Instructor: C. Alba, No fee, 12 hours.**

#### 🍂 FALL

**NC 1015-75 Sat Sep. 5–26 12–2:50 p.m.**  
 Class type: Face-to-face Location: HECNC  
 Room: 7203

### GOSPEL CHOIR I

Underlines and defines the Spirituals and Black Gospel with aural and historical analysis. Emphasizes and practices vocal and performing techniques, interpretive skills, and performance practice. Requires public performance.

**Instructor: P. Rieves, No fee, 72 hours.**

#### 🍂 FALL

**NC 3081-01 TTh Aug. 24–Dec. 13 1:20–3:25 p.m.**  
 Class type: Face-to-face Location: SWC Chula Vista  
 No Class: 11/26 Room: 85-101

### INTRODUCTION TO MARIACHI PERFORMANCE I

Provides older adults the opportunity to perform simple mariachi music in a beginning-level ensemble. Emphasizes learning to play mariachi instruments (violin, trumpet, guitar, vihuela, guitarron, flute, voice) in the proper style, reading music, and playing well as part of a group.

**No fee, 72 hours.**

#### ☀️ SUMMER

**NC 87-01 M Jun. 15–Aug. 5 3–8:50 p.m.**  
**W Jun. 15–Aug. 5 3–5:50 p.m.**  
 Class type: Face-to-face Location: SWC Chula Vista  
**Instructor: V. Viveros & J. Nevin** Room: 85-101

#### 🍂 FALL

**NC 87-60 W Aug. 26–Dec. 9 3:40–6:30 p.m.**  
 Class type: Face-to-face Location: SWC Chula Vista  
**Instructor: V. Viveros** Room: 85-102  
 No Class: 11/11

### 💰 RETIREMENT PLANNING TODAY

Educate retirees as to the multitude of decisions that must be made during retirement as well as the complexities of managing financial affairs to create their best retirement lifestyle today.

**Instructor: K. Bowie. 6 hours.**

*\*You may bring a guest at no charge, to either class listed below*

#### ☀️ SUMMER

**CS 175-75 Sat Jun. 6–13 9 a.m.–12 p.m. Fee: \$49**  
 Class type: Face-to-face Location: SWC Chula Vista  
 Room: 24-101

**CS 175-76 T Jun. 9–16 6–9 p.m. Fee: \$49**  
 Class type: Face-to-face Location: SWC Chula Vista  
 Room: 24-101

#### 🍂 FALL

**CS 175-77 Sat Oct. 10–17 8:30 a.m.–12:30 p.m. Fee: \$49**  
 Class type: Face-to-face Location: SWC Chula Vista  
 Room: TBA

**CS 175-78 W Oct. 13–20 6–9 p.m. Fee: \$49**  
 Class type: Face-to-face Location: SWC Chula Vista  
 Room: TBA



## VOICE-OVERS—NOW IS YOUR TIME!

In what could be the most enlightening webinar you've ever taken, our instructor and professional voice coach will show you how to begin using your speaking voice for commercials, films, videos, and more. Most people approach this industry the wrong way—this introductory class offers a unique, outside-the-box perspective on how to get started in this creative, fulfilling, and potentially lucrative field. Voice-over work can be managed on your own terms, on your own schedule, and with minimal overhead. Whether pursued part-time or full-time, this course may be the opportunity you've been looking for. In addition to the online session, participants will have the opportunity to book a one-on-one script read and voice evaluation by phone with the instructor the following day.

This class will be presented via Zoom. A link will be sent 24 hours prior to the session.

**Instructor: Justine Reiss, 2 hours**

### SUMMER

**CS 148-6 M Aug. 10 6:30–8:30 p.m. Fee: \$50**  
Class Type: Synchronous "Live" Online

### FALL

**CS 148-6 M Nov. 2 6:30–8:30 p.m. Fee: \$50**  
Class Type: Synchronous "Live" Online

## Fitness and Wellness

### BODY DYNAMICS AND AGING PROCESS

Provides instruction and conditioning for the maintenance of physical well-being, particularly for older adults. Focuses on deep breathing, circulation, flexibility, stamina, body awareness, and rhythmic movements. Incorporates adapted techniques suitable for individuals of varied fitness levels and physical ability.

**Instructor: C. Alba, No fee, 36 hours.**

### SUMMER

**NC 34-E1 TTh Jun. 9–Jul. 30 8–10:20 a.m.**  
Class type: Face-to-face Location: IBSC  
*No Class: 6/18, 7/2*

**NC 34-80 MW Jun. 15–Jul. 29 10 a.m.–12:20 p.m.**  
Class type: Face-to-face Location: HECSY  
Room: 5104

### FALL

**NC 34-80 MW Aug. 24–Dec. 9 10–11 a.m.**  
Class type: Face-to-face Location: HECSY  
Room: 5104  
*No Class: 9/7, 11/11*

**NC 34-E1 TTh Aug. 25–Nov. 5 8–9:20 a.m.**  
Class type: Face-to-face Location: IBSC

## TAI CHI

Introduces the Chinese Tai Ji Quan (Tai Chi) traditional exercise for body and mind. Emphasizes muscle tone, flexibility, relaxation and stress reduction, especially for older adults. Consists of slow rhythmic movements and mediation techniques effective for relaxation, decreasing high blood pressure, and promoting overall wellness for all ages.

**No fee, 24 hours.**

### SUMMER

**NC 32-70 TTh Jun. 9–Aug. 6 9–10:15 a.m.**  
Class type: Face-to-face Location: HECNC  
Room: 7130  
*No Class: 6/18, 7/2*  
**Instructor: J. Muren**

**NC 32-81 TTh Jun. 9–Aug. 6 3–4:15 p.m.**  
Class type: Face-to-face Location: HECSY  
Room: 5104  
*No Class: 6/18, 7/2*  
**Instructor: J. Muren**

**NC 32-E1 WF Jun. 10–Aug. 5 11:45 a.m.–1:05 p.m.**  
Class type: Face-to-face Location: BSLB  
**Instructor: J. Muren**  
*No Class: 6/19, 7/3*

### FALL

**NC 32-E5 W Aug. 26–Dec. 9 11 a.m.–12:20 p.m.**  
Class type: Face-to-face Location: BSLB  
**Instructor: J. Muren**  
*No Class: 11/11*

**NC 32-80 Th Aug. 27–Dec. 10 10–11:20 a.m.**  
Class type: Face-to-face Location: HECSY  
Room: 5104  
**Instructor: J. Muren**  
*No Class: 11/26*

**NC 32-75 Sat Aug. 29–Dec. 5 11 a.m.–12:25 p.m.**  
Class type: Face-to-face Location: HECNC  
Room: 7130  
**Instructor: J. Han**  
*No Class: 11/28*

**NC 32-50 Sat Aug. 29–Dec. 12 9:20–10:40 a.m.**  
Class type: Face-to-face Location: SWC Chula Vista  
Room: 70-310  
**Instructor: J. Muren**  
*No Class: 11/28*

**NC 32-51 Sat Aug. 29–Dec. 12 11 a.m.–12:20 p.m.**  
Class type: Face-to-face Location: SWC Chula Vista  
Room: 70-310  
**Instructor: J. Muren**  
*No Class: 11/28*

**NC 32-78 Sun Aug. 30–Dec. 6 11 a.m.–12:30 p.m.**  
Class type: Face-to-face Location: HECNC  
Room: 7130  
**Instructor: TBA**  
*No Class: 9/6, 11/29*

# SWC YOUTH PROGRAMS



Southwestern College offers a variety of youth programs that provide opportunities for enrichment, recreation, and career exploration. Programs are offered through different departments and locations across the college. Each program manages its own registration and inquiries. Please contact the program directly for information.

## SOUTHWESTERN COLLEGE TENNIS ACADEMY

The Southwestern College Tennis Academy offers youth the opportunity to develop tennis fundamentals, sportsmanship, and athletic skills in a supportive and engaging environment. Programs support beginning, intermediate, and advanced skill levels, with multiple sessions offered throughout the summer and fall. See the full schedule and registration information under Southwestern Tennis Academy in this catalog. Email: [customizedtraining@swccd.edu](mailto:customizedtraining@swccd.edu)



## SOUTHWESTERN COLLEGE Y.E.S. ACADEMY YOUTH, EXCELLENCE & SUCCESS

FEE:  
**\$185**

A summer enrichment program for students entering grades 4-10 focused on career exploration, leadership development, STEM learning, and project-based experiences.

**Session I: June 15-26    Session II: June 29-July 10**

**Times:** 9 a.m.-11:30 a.m. and 12:30 p.m.-2:30 p.m. | Monday-Thursday

**TO REGISTER AND FOR MORE INFORMATION, VISIT: [www.swccd.edu/yes](http://www.swccd.edu/yes)**

**Email:** [swcYESAcademy@swccd.edu](mailto:swcYESAcademy@swccd.edu)

900 Otay Lakes Road, Bldg. 59A-101, Chula Vista, CA 91910

## SOUTHWESTERN COLLEGE CROWN COVE AQUATIC CENTER

Are you ready for a challenge with Aquatic Camp? Designed for teens, ages 7-16 with age-appropriate activities, and safe fun on the water. Students learn to solo-sail, kayak, stand-up paddle, paddle long-distance, Hawaiian Outrigger canoe, basic water safety, and an intro to First Aid & CPR.

Located at Crown Cove on Silver Strand State Beach, these programs provide hands-on ocean and environmental education and youth camps.

**Session II: June 22-June 26 | Session II: June 29- July 1**

**Session III: July 6 - July 10 | Session IV: July 13-July 17**

**Session V: July 20-July 24 | Session VI: July 27- July 31**

**Times:** 9 a.m.-4 p.m. | Monday-Fridays

**TO REGISTER AND FOR MORE INFORMATION, VISIT:  
[www.swccd.edu/CrownCove](http://www.swccd.edu/CrownCove)**

Call: 619-575-6176

Located at Silver Strand State Beach, 5000 Highway 75,  
Coronado, CA 92118

**JOIN THE FUN AND  
ENROLL TODAY!**





# SOUTHWESTERN COLLEGE JAGUAR TENNIS ACADEMY

## 📍 BEGINNING LEVEL (AGES 7-12)

Are you ready to start your tennis journey? Join our Beginning/Advanced Beginning 1 and 2 class. This class is designed for those first learning the game of tennis and those with some experience and looking to improve their skills with professional instruction. Class will include basic forehand and backhand shots, basic serving, basic volley skills and footwork and conditioning, with development of hand eye coordination related to tennis. Students will interact with other students through drills and games that develop Tennis skills. Step onto the court and start mastering the game with us today!

**Instructor: Susan Reasons**

### ☀️ SUMMER

**TA-L1-S14 M Jun. 8-29 4:30-6 p.m. Fee: \$85**  
Class type: Face-to-face Location: SWC Chula Vista Lot H

**TA-L1-S15 M Jul 6-27 4:30-6 p.m. Fee: \$85**  
Class type: Face-to-face Location: SWC Chula Vista Lot H

### 🍂 FALL

**TA-L1-S16 M Aug. 17-Sept. 14 4:30-6 p.m. Fee: \$85**  
Class type: Face-to-face Location: SWC Chula Vista Lot H

**TA-L1-S17 M Sept. 28-Oct. 19 4:30-6 p.m. Fee: \$85**  
Class type: Face-to-face Location: SWC Chula Vista Lot H

**TA-L1-S18 M Nov. 9-30 4:30-6 p.m. Fee: \$85**  
Class type: Face-to-face Location: SWC Chula Vista Lot H

## 📍 BEGINNING LEVEL (AGES 7-12)

### ☀️ SUMMER

**TA-L1-S19 T Jun. 2-30 4:30-6 p.m. Fee: \$85**  
Class type: Face-to-face Location: Chula Vista Campus Lot H

**TA-L1-S20 T Jul. 7-28 4:30-6 p.m. Fee: \$85**  
Class type: Face-to-face Location: SWC Chula Vista Lot H

**TA-L1-S21 T Aug. 11-Sept. 1 4:30-6 p.m. Fee: \$85**  
Class type: Face-to-face Location: SWC Chula Vista Lot H

### 🍂 FALL

**TA-L1-S22 T Sept. 8-29 4:30-6 p.m. Fee: \$85**  
Class type: Face-to-face Location: SWC Chula Vista Lot H

**TA-L1-S23 T Oct. 6-27 4:30-6 p.m. Fee: \$85**  
Class type: Face-to-face Location: SWC Chula Vista Lot H

**TA-L1-S24 T Nov. 10-Dec. 1 4:30-6 p.m. Fee: \$85**  
Class type: Face-to-face Location: SWC Chula Vista Lot H

## 📍 ADVANCE BEGINNING/INTERMEDIATE (AGES 8-15)

Combined skills of advanced beginning/intermediate level tennis to include continuation of forehand/backhand strokes, serving, return of serve, volleys. Enhancement of on court footwork and conditioning with an emphasis on positioning for accuracy of shots.

**Instructor: Susan Reasons**

### ☀️ SUMMER

**TA-L2-S15 W Jun. 3-Jul. 1 4:30-6 p.m. Fee: \$85**  
Class type: Face-to-face Location: SWC Chula Vista Lot H

**TA-L2-S16 W Jul. 8-29 4:30-6 p.m. Fee: \$85**  
Class type: Face-to-face Location: SWC Chula Vista Lot H

**TA-L2-S17 W Aug. 12-Sept. 2 4:30-6 p.m. Fee: \$85**  
Class type: Face-to-face Location: SWC Chula Vista Lot H

### 🍂 FALL

**TA-L2-S18 W Sept. 9-30 4:30-6 p.m. Fee: \$85**  
Class type: Face-to-face Location: SWC Chula Vista Lot H

**TA-L2-S19 W Oct. 7-28 4:30-6 p.m. Fee: \$85**  
Class type: Face-to-face Location: SWC Chula Vista Lot H

**TA-L2-S20 W Nov. 4-Dec. 2 4:30-6 p.m. Fee: \$85**  
Class type: Face-to-face Location: SWC Chula Vista Lot H



**☀ INTERMEDIATE LEVEL 3 (AGES 10-16)**

Ready to take your tennis skills to the next level? Join our Intermediate level class. Students will further develop their Tennis skills to include practice rallies, point playing, Serve and Return of Serve, scoring and Game/Set management, and more advanced footwork drills and further conditioning. Gear up for an action-packed experience and elevate your game with us.

**Instructor: Susan Reasons**

**☀ SUMMER**

**TA-L3-S14 Th Jun. 4-25 4:30-6 p.m. Fee: \$85**  
 Class type: Face-to-face Location: SWC Chula Vista Lot H

**TA-L3-S15 Th Jul. 9-30 4:30-6 p.m. Fee: \$85**  
 Class type: Face-to-face Location: SWC Chula Vista Lot H

**TA-L3-S16 Th Aug. 13-Sept. 3 4:30-6 p.m. Fee: \$85**  
 Class type: Face-to-face Location: SWC Chula Vista Lot H

**🍂 FALL**

**TA-L3-S17 Th Sept. 10-Oct. 13 4:30-6 p.m. Fee: \$85**  
 Class type: Face-to-face Location: SWC Chula Vista Lot H

**TA-L3-S18 Th Oct. 8-29 4:30-6 p.m. Fee: \$85**  
 Class type: Face-to-face Location: SWC Chula Vista Lot H

**TA-L3-S19 Th Nov. 5-Dec. 3 4:30-6 p.m. Fee: \$85**  
 Class type: Face-to-face Location: SWC Chula Vista Lot H

**☀ ADULTS BEGINNING/INTERMEDIATE (AGES 18+)**

Get ready for an energetic and fun class focused on hitting, drills, and skill-building to increase students' tennis game to the next level! Players will sharpen their technique through engaging drills while building confidence on the court. The class also emphasizes group games and interactive activities, creating a lively atmosphere where students learn, compete, and support each other as a team.

**Instructor: Susan Reasons**

**☀ SUMMER**

**TA-L4-S16 Th Jun. 4-25 6:30-8 p.m. Fee: \$80**  
 Class type: Face-to-face Location: SWC Chula Vista Lot H

**TA-L4-S17 Th Jul. 9-30 6:30-8 p.m. Fee: \$80**  
 Class type: Face-to-face Location: SWC Chula Vista Lot H

**TA-L4-S18 Th Aug. 13-Sept. 3 6:30-8 p.m. Fee: \$80**  
 Class type: Face-to-face Location: SWC Chula Vista Lot H

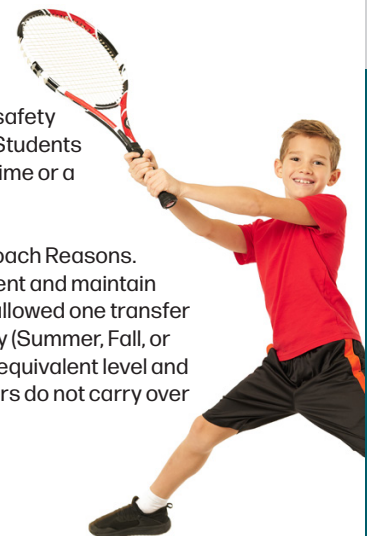
**🍂 FALL**

**TA-L4-S19 Th Sept. 10-Oct. 1 6:30-8 p.m. Fee: \$80**  
 Class type: Face-to-face Location: SWC Chula Vista Lot H

**Important notes for SWC Jaguar Tennis Academy students: Students must have your own racquet and water bottle.**

Tennis sport shoes and athletic clothing are only allowed in class. Students must follow all rules for safety as instructed by Coach Reasons. Students are to be picked up from class on time or a late fee will be incurred.

Make-ups must be approved by Coach Reasons. To support student skill development and maintain program continuity, students are allowed one transfer per term, within the same term only (Summer, Fall, or Spring), to another tennis class of equivalent level and cost, based on availability. Transfers do not carry over between terms.



# Office Support Fundamentals Program Stackable Certificate Pathway



Get the skills you need to launch or grow your career in office administration! Our Office Support Fundamentals program offers a stackable set of classes that lead to Beginning, Intermediate, and Advanced Certificates. You can build your skills step by step, with the flexibility to move forward at your own pace with each 8-hour course.

## **BEGINNING CERTIFICATE** (24 HOURS)

Start your journey with the foundational courses designed to give you essential office support skills:

- **NC 200:** Introduction to Basic Keyboarding
- **NC 198:** Introduction to Basic Microsoft Word
- **NC 185:** Introduction to Basic PowerPoint

Upon completion of these three courses, you will earn the Beginning Certificate in Office Support Fundamentals.

## **INTERMEDIATE CERTIFICATE** (24 HOURS)

Build on your foundation with more advanced skills to support a modern office environment:

- **NC 24:** Introduction to Basic Microsoft Excel Spreadsheets
- **NC 186:** Introduction to Basic Business English
- **NC 187:** Introduction to Office Assistant and Employment

Complete these courses to earn the Intermediate Certificate in Office Support Fundamentals.

## **ADVANCED CERTIFICATE** (48 HOURS)

**Ready to take it to the next level?** Complete all six classes from the Beginning and Intermediate levels to qualify for the Advanced Certificate in Office Support Fundamentals.

**SEE PAGE 22  
FOR BEGINNING  
CERTIFICATE  
COURSES AND  
SCHEDULE.**



# Grow your business with high-quality, affordable, contract training

Southwestern College can partner with your company to provide customized training with high-quality instruction in key aspects of workforce development.

Quickly upskill your workforce, improve performance, and boost your bottom line with custom training tailored to the needs of your employees and organization. Scheduling is flexible and instruction can be offered at a location that meets your needs.

**For more information call us at  
619-482-6533 or email us at  
Customizedtraining@swccd.edu**



**KEEP GROWING**  
CONTINUING EDUCATION



# NEXT STEPS to Keep You Growing.



Are you taking a noncredit course, or maybe enrolled in one of the certificate programs, and you're wondering what other education opportunities are offered at Southwestern College? Eligible, enrolled noncredit students can

attend an orientation and meet with a counselor to explore NEXT STEPS, the education opportunities and services available through Southwestern College.

## In NEXT STEPS, you can:

- Explore career options and choosing life/career goals
- Identify your current skill levels
- Make the transition to college
- Become aware of campus services and resources available
- Learn how to pay for college and financial assistance options
- Develop an educational plan

***Schedule your NEXT STEPS appointment today!***

(619) 482-6376

ContinuingEd@swccd.edu



**KEEP GROWING**

CONTINUING EDUCATION



# NONCREDIT APPLICATION

SOUTHWESTERN COLLEGE CONTINUING EDUCATION  
900 Otay Lakes Road, Bldg. 68-101, Chula Vista, CA 91910-7299  
619-482-6376 Email: continuinged@swccd.edu

### CHECK THE TERM THAT APPLIES:

- SUMMER
- FALL
- SPRING

Noncredit courses are funded by local and state taxes. The information requested on this application **remains confidential and is required** to establish your eligibility to register in this publicly funded class. Thank you for your assistance.

-PLEASE PRINT NEATLY IN **BLACK INK** AND DO NOT USE ANY NICKNAMES OR ABBREVIATIONS-

Have you ever taken a class at Southwestern College before?  NO  Yes SWC ID # \_\_\_\_\_

LAST NAME \_\_\_\_\_ FIRST NAME \_\_\_\_\_ MIDDLE NAME \_\_\_\_\_  
**OTHER NAMES YOU HAVE USED SINCE BIRTH:**  
 (Include nicknames, aliases, and maiden name, if applicable) \_\_\_\_\_

HOME ADDRESS (P.O. Box not acceptable) \_\_\_\_\_ CITY \_\_\_\_\_ STATE \_\_\_\_\_ ZIP CODE \_\_\_\_\_

BIRTHDATE \_\_\_\_\_ HOME PH. ( ) \_\_\_\_\_  
Month / Day / Year CELL PH. ( ) \_\_\_\_\_

GENDER \_\_\_\_\_ EMAIL: \_\_\_\_\_  
 MALE  FEMALE  NONBINARY  DECLINE TO STATE SOCIAL SECURITY NUMBER \_\_\_\_\_ / \_\_\_\_\_ / \_\_\_\_\_  
 (Optional)

**ETHNIC BACKGROUND:** (Please Check one)  HIS Hispanic/Latino  NHIS Non-Hispanic/Latino  X Unknown

**RACE:** (Please check all that apply) This information required by the Department of Education in compliance with Title VI, Civil Rights Act, 1964

<input type="checkbox"/> 01. Chinese	<input type="checkbox"/> 05. Cambodian	<input type="checkbox"/> 09. Guamanian	<input type="checkbox"/> 13. Mex, MexAmer, Chicano	<input type="checkbox"/> 17. Filipino
<input type="checkbox"/> 02. Japanese	<input type="checkbox"/> 06. Vietnamese	<input type="checkbox"/> 10. Hawaiian	<input type="checkbox"/> 14. South American	<input type="checkbox"/> 18. Amer. Ind, Alask Native
<input type="checkbox"/> 03. Korean	<input type="checkbox"/> 07. Asian Indian	<input type="checkbox"/> 11. Samoan	<input type="checkbox"/> 15. Central American	<input type="checkbox"/> 19. Black, Non-Hispanic
<input type="checkbox"/> 04. Laotian	<input type="checkbox"/> 08. Other Asian	<input type="checkbox"/> 12. Pacific Islander /Other	<input type="checkbox"/> 16. Other Hispanic	<input type="checkbox"/> 20. White

IS ENGLISH THE LANGUAGE YOU SPEAK AND WRITE MOST FREQUENTLY?  Yes  NO If NO, specify language: \_\_\_\_\_

**HIGH SCHOOL EDUCATION STATUS:** (Please check one)

- 1. Not a high school graduate and not enrolled in high school
- 2. Not a high school graduate and currently enrolled in Adult School
- 3. Currently Enrolled in high school
- 4. U.S. High School diploma
- 5. High School Equivalency Certificate (GED/HISET)
- 6. Certificate of California High School Proficiency (CHSPE)
- 7. Foreign secondary/high school Diploma/Certificate

**ADULT SCHOOL SITE:** (Please check all that apply and enter the date you last attended)

San Ysidro Adult School	<input type="checkbox"/> Mo / Year
Chula Vista Adult School	<input type="checkbox"/> Mo / Year
Montgomery Adult School	<input type="checkbox"/> Mo / Year
National City Adult School	<input type="checkbox"/> Mo / Year
Coronado Adult School	<input type="checkbox"/> Mo / Year

Please indicate any Adult School you have attended in the State of California not on the list:  
 \_\_\_\_\_

**HIGHEST LEVEL OF EDUCATION COMPLETED** (Please Check One)

Technical/Certificate <input type="checkbox"/>	A.A. /A.S. Degree <input type="checkbox"/>	4-yr. College Graduate <input type="checkbox"/>
Graduate Studies <input type="checkbox"/>	<b>Some College, No Degree</b> (If <b>YES</b> , please check one) <input type="checkbox"/> Freshman <input type="checkbox"/> Junior <input type="checkbox"/> Sophomore <input type="checkbox"/> Senior	Other Diploma/Degree <input type="checkbox"/>

<b>WHAT IS YOUR PRIMARY EDUCATIONAL GOAL FOR ATTENDING CONTINUING EDUCATION COURSES?</b> (Please check one)	Get a better Job <input type="checkbox"/>	Improve Basic Skills <input type="checkbox"/>	Improve English Skills <input type="checkbox"/>	Prepare to Earn High School Diploma / GED <input type="checkbox"/>
	Prepare for Employment <input type="checkbox"/>	Retain Current Job <input type="checkbox"/>	Prepare to Enter College or Training <input type="checkbox"/>	Personal Goal <input type="checkbox"/>
	Family Goal <input type="checkbox"/>	Prepare for U.S. Citizenship <input type="checkbox"/>	Prepare for Military Service <input type="checkbox"/>	Undecided <input type="checkbox"/>
	Other Goal Attainable <input type="checkbox"/> (Please Explain)			

<b>CURRENTLY AFFILIATED WITH:</b>	Corrections <input type="checkbox"/>	Homeless Programs <input type="checkbox"/>	N/A <input type="checkbox"/>
-----------------------------------	--------------------------------------	--	------------------------------

*SIGNATURE:* \_\_\_\_\_ *DATE:* \_\_\_\_\_

**PLEASE REGISTER ME IN THE FOLLOWING NONCREDIT COURSES:**

Course-Section Number	Name of Course	Start Date
NC		
NC		
NC		
NC		
NC		

**FOR OFFICE USE ONLY**

Application Entered By: \_\_\_\_\_

Date: \_\_\_\_\_



# Index

## *Listing of Class offerings*

A Caregiver's Guide to Infants and Toddlers.....	14	Computers and Technology for ESL.....	26
A Caregiver's Guide to Preschoolers.....	14	Concert Band I.....	28
A Caregiver's Guide to School-Age Children.....	14	Concert Choir I.....	28
A Caregiver's Guide to Teens.....	14	Construction OSHA 10.....	8
Algebra Refresher Level 1.....	20	CPR for the Healthcare Provider.....	8
Algebra Refresher Level 2.....	20	Creating Art from Everyday Objects.....	29
Alzheimer's Disease and Dementia Training.....	7	Customer Service: Dealing with Difficult People.....	13
💰 Applied Behavioral Analysis Training.....	14	Customer Service: Mastering Communication.....	13
Art Therapy.....	28	Customer Service: The Right Attitude.....	13
Automotive Tire Service Training Programs.....	15	Elementary and Intermediate Algebra Refresher.....	20
Basic Automotive Service I.....	16	💰 Energy Efficiency Job Training Program.....	21
Basic Automotive Service II.....	16	ESL Conversation.....	26
Basic ESL I.....	24	ESL for Family Literacy.....	26
Basic ESL II.....	25	First Aid for Public Safety Personnel - Title 22.....	8
Basic ESL III.....	25	💰 Forklift Certification.....	15
Basic First Aid and Adult CPR.....	7	Gospel Choir I.....	29
Basic Life Support (BLS) Instructor.....	8	<b>NEW!</b> Grant Writing for Nonprofit Organizations.....	11
Body Dynamics and Aging Process.....	30	Home Health Aide (HHA).....	7
Budget and Home Energy Management.....	28	Introduction to Basic Keyboarding.....	22
Building Social Skills for College.....	15	Introduction to Basic Microsoft Excel Spreadsheets.....	22
💰 California State Notary Public Seminar.....	11	Introduction to Basic Microsoft Word.....	22
Career Research-Using the Internet.....	19	Introduction to Basic Powerpoint.....	22
💰 Certificate in Nonprofit Management.....	11	Introduction to Computers.....	22
💰 Child Visitation Monitor Training Course.....	15	Introduction to Drone Technology and Applications.....	17



Introduction to Mariachi Performance I .....	29	Registered Nurse First Assistant-RNFA Program .....	10
<b>NEW!</b> Landscape Construction.....	17	Remote Pilot Ground School .....	17
Lifeguard Training .....	8	<b>\$</b> Retirement Planning Today .....	29
<b>\$</b> Loan Signing-Notary Public Seminar II .....	11	Service Advisor I.....	16
<b>\$</b> Lighting Systems Course.....	21	Service Advisor II.....	16
Make Extra Income as a Wholesale Auto Dealer from Home .....	13	Stepping Stones to Success In the Workplace.....	15
Optical Technician I.....	9	Success in Nursing.....	19
Optical Technician II.....	9	Tai Chi .....	30
Organize Your Life and Have More Time for Fun.....	29	Tax Preparation/Income Tax Course I .....	12
Oxygen Administration for the Professional Rescuer.....	9	Tax Preparation/Income Tax Course II.....	12
Parts Advisor I .....	16	<b>\$</b> Tennis Academy.....	32
Parts Advisor II .....	16	Transitioning to College ESL.....	26
Pediatric Safety and CPR.....	9	Trigonometry Refresher .....	21
<b>\$</b> Phlebotomy Technician Program .....	10	Using Your Foreign Degree in the United States.....	19
		Voice-Overs—Now Is Your Time .....	30



*Visit us:*  
**Continuing Education**  
**Noncredit:**  
 Office  
**68-101**  
 Located inside the Student Services Center

**Community Education**  
**Youth Programs:**  
 Office  
**59A-101**

**CHULA VISTA CAMPUS SCHOOLS & DEPARTMENTS** (Listed in this order: Grid Location/Department Name/Room Number)

- |  |   |   |   |
|--|---|---|---|
| B6 Academic Affairs: 12-101  | F6 Financial Services: 46A                        | D4 Second Year Experience: 62A-101              | G5 Tennis Center: 79                                  |
| E5 Academic Services: 58A-102                                      | D4 First Year Experience: 62A-103                 | F6 Southwestern College Botanical Garden: 40-46 | D7 Time Out Cafe: 27                                  |
| D7 Academic Success Center: 26                                     | C5 Food Hall: 67-109                              | C5 Student Activities: 67-230                   | F7 Title IX: 46C-103                                  |
| C6 Admissions and Records: 68-101                                  | B6 Foundation: 12-103                             | G6 Student Affairs: 68-105                      | D4 Tradewinds Cafe: 65                                |
| B6 Advancement and Community Engagement: 12-102                    | G7 Grounds: 93                                    | C6 Student Employment Services: 68-208          | E5 Traffic School: 59A-101                            |
| C5 Art Gallery: 88-101   | B3 Gymnasium: 70                                  | C6 Student Engagement & Completion: 68-205A     | B6 University Center: 24-112                          |
| C4 Articulation: 64-346C   | C5 Health and Wellness: 67-140                    | C5 Student Equity Programs and Services: 67-256 | C5 Veterans Services/Veterans Resource Center: 67-188 |
| C5 Associated Student Organization (ASO): 67-244                   | B7 High School/Adult School Articulation: 25-115  | C6 Student Services Center: 68                  | F5 Warehouse/Receiving: 48B                           |
| C3 Athletics: 71   | F7 Human Resources: 46B-151                       | C5 Student Union: 67                            | C6 Welcome Center Desk: 68-109                        |
| E6 Automotive Technology: 47A                                      | C6 Information: 68-109                            | B7 Superintendent/President: 24-110             | B3 Wellness & Aquatics Complex: 70                    |
| C6 Binational & International Programs: 16-105                     | B6 Institutional Research & Planning: 23          | C5 SWC Cares: 67-172                            | D7 Writing Center: 26                                 |
| D5 Bookstore: 56A  | C7 Institutional Technology: 23                   | E5 The SWC Sun: 57A                             | C6 Workability III: 68-107B                           |
| E7 Business and Operations: 46B                                    | 7B Instructional & Discovery Complex: 24 & 25     |   | D6 Youth Programs: 59A-101                            |
| C6 CalWORKS: 68-210  | C4 Instructional Support Services: 64-346         |   |   |
| C6 Career Center: 68-206   | A2 Jaguar Aquatics Wellness and Sports (JAWS): 70 |   |   |
| C6 Career & Transfer Connections: 68-208                           | F6 Landscape and Nursery Technology: 40-46        |   |   |
| C3 Central Plant: 72   | B7 Language Acquisition Center: 25-112/114        |   |   |
| H6 Child Development Center: 99                                    | C5 Learning Communities Hub: 67-262               |   |   |
| C8 College Police: 22  | C4 Learning Resource Center: 64                   |   |   |
| E5 Continuing Education & Workforce Development: 59A-101           | C4 Library: 64                                    |   |   |
| C6 Counseling and Student Support Programs: 68-204                 | C8 Lost and Found: 22                             |   |   |
| C6 Center for Technical Education & Career Success (CTECS): 68-210 | E5 Maintenance: 48A                               |   |   |
| E5 Custodial: 48A  | D4 Math Center: 60-110                            |   |   |
| C3 DeVore Stadium: 71  | C5 Meditation Space: 67-176                       |   |   |
| D6 Disability Support Services (DSS): 68-108                       | D4 MESA Center: 60-101                            |   |   |
| D7 Dreamer Center: 26-120  | C7 Online Learning Center: 64-344                 |   |   |
| D7 DSS High Tech Center: 26  | G7 Operations (Future Site): 90-92                |   |   |
| C4 Employee Equity, Inclusion & Professional Development: 64-242   | C-D4 Options Middle College High School: 61A-63A  |   |   |
| C6 Extended Opportunity Programs and Services (EOPS): 68-203       | C6 Outreach: 16-101                               |   |   |
| C6 Evaluations: 68-104   | F7 Payroll Services: 46A                          |   |   |
| F7 Facilities, Operations and Planning: 98                         | A3 Performing Arts Center: 80                     |   |   |
| C6 Financial Aid: 68-104   | C6 Placement & Prerequisite Services: 68-205      |   |   |
|  | C7 Planetarium: 25-101                            |   |   |
|  | D7 Power Study: 26-120                            |   |   |
|  | F5 Print Shop: 48B                                |   |   |
|  | F7 Purchasing: 46E-170                            |   |   |
|  | D7 Reading Lab: 26                                |   |   |

**SCHOOLS**  
 E5 School of Applied Technology & Hospitality Management: 59A-101F  
 C5 School of Arts, Communication, Design and Media: 87-109  
 B7 School of Business: 25-115  
 C6 School of Counseling and Student Support Programs  
 B7 School of Education, Humanities, Social and Behavioral Sciences: 24-217  
 D7 School of Languages and Literature: 28-107  
 D4 School of Mathematics, Science and Engineering: 60-125  
 C3 School of Wellness, Exercise Science and Athletics: 71-401

**RELOCATED OFFICES & NEW ADDITIONS** are listed in teal.  
**Parking permits are required at all times. Avoid Citations!**  
 Purchase a parking permit at: [bit.ly/swcpermits](http://bit.ly/swcpermits)



Due to construction, most map directory enclosures are out of date. To view all maps for all of our campuses visit [swccd.edu/map](http://swccd.edu/map) or scan the QR code. If you do not have a smartphone, visit the Welcome Center desk in the Student Services Center, Building 68.



SOUTHWESTERN COLLEGE

**Continuing Education**

900 Otay Lakes Road  
Chula Vista, CA 91910-7299

**Noncredit:** Student Services Center,  
Building 68-101

**Community Education Courses/  
Youth Programs:** Building 59A-101

PERIODICALS

**ECRWSS  
Residential Customer**

To request this schedule in alternate media, please call (619) 482-6512 or TTY (619) 482-6470.

# Continue to Learn, to build, to thrive.

## FREE noncredit and community education certificates inside!

- Career Development
- College and Career Readiness
- English as a Second Language
- Exploration and Personal Growth
- Youth Programs



**KEEP GROWING**  
CONTINUING EDUCATION



Register early to reserve your seat.  
[www.swccd.edu/ContinuingEd](http://www.swccd.edu/ContinuingEd)