



Project Overview

Current Status\Phase	Design
Construction Type	New Construction
Gross Square Footage	50,000
Division of State Architect	04-118597
Construction Method	Construction Manager at Risk
Project Life-span	756 Days

Project Financials

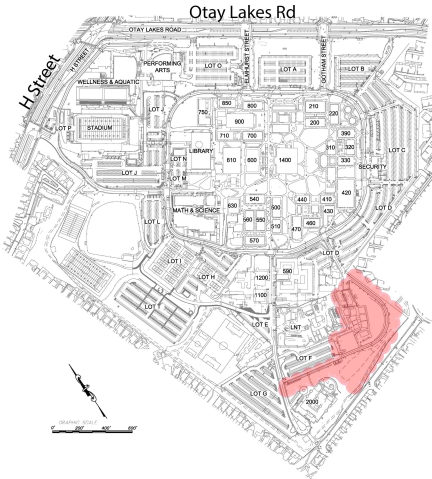
Funded By	Measure Z
Programmed Budget	\$42,200,000
Expenditures to Date	\$817,744

Project Teams

Architect	Sillman Wright Architects
Structural Engineer	BWE, Inc.
Electrical Engineer	Engineering Partners, Inc.
Civil Engineer	Nolte Associates, Inc. (NV5)
Mechanical Engineer	IMEG Corp
SWC Project Manager	Robert DePew
Construction Manager	Balfour Beatty Construction
DSA Inspector	TBD

Site Detail

Campus	Chula Vista (Main) Campus
Coordinates	32.636691, -116.997623



Project Schedule

Programming Complete	Design and DSA Finish	Construction Finish	FFE and Move-in Finish
Spring 2019	Fall 2020	Fall 2021	Spring 2021

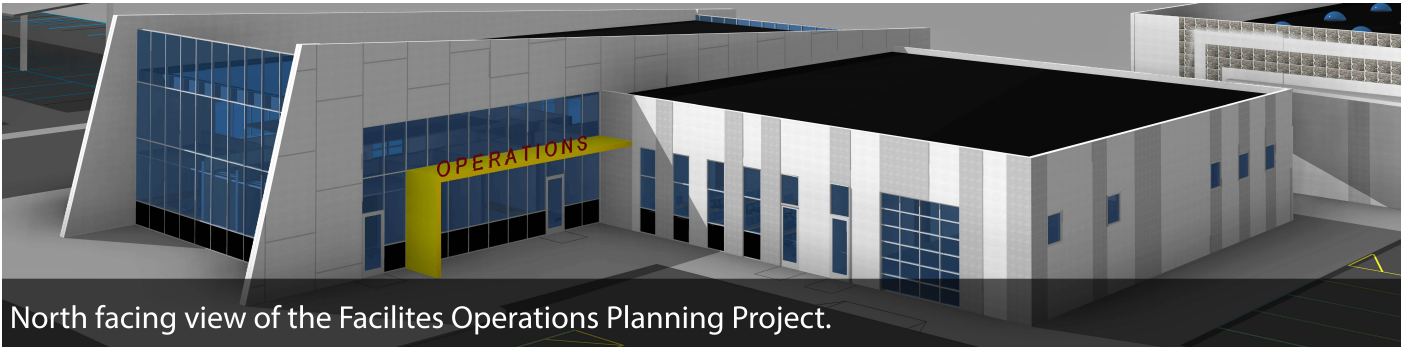
Project Insight

According to the Southwestern College Facilities Master Plan (2018), the redevelopment of the southeast portion of campus will accommodate the consolidated Facilities Operations, Maintenance and Grounds complex. It will centralize campus services in a location that is remote from areas of concentrated student activity, yet conveniently accessed by the new Ring Road. Deliveries and materials handling will be less disruptive to campus activity and can be efficiently staged and organized. Included in this project is the re-alignment of the access road and utilities that service the Child Development Center and as well as other facilities located on that portion of the campus.

The District is also currently in the design phase of Landscape Nursery Technology (LNT) project adjacent to the Facilities Operations, Maintenance and Grounds complex. This project’s design coincides substantially with the Facilities Operations, Maintenance and Grounds complex project schedule and therefore the timing of the two projects is very similar. Facilities Operations, Maintenance and Grounds complex and the (LNT) project share a common property border and share scopes of work related to material storage, utilities and access.

Due to the proximity, timing and scope of work of the two adjoining projects, the District included the Facilities Operations, Maintenance and Grounds complex project scope under Balfour Beatty Construction (Construction Manager at Risk) contract services for this project. Additionally, the District will benefit from a significant cost savings overall by utilizing the overlay of construction management facilities and staff that will be assigned to both projects.

Project Concept Rendering



North facing view of the Facilities Operations Planning Project.

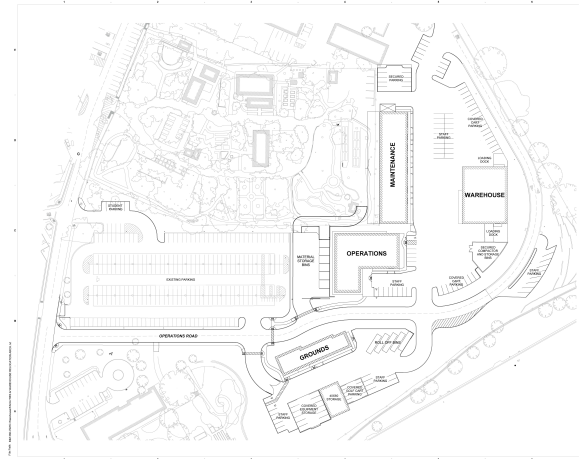


East facing view of the Warehouse building for Facilities Operations Planning Project.

Project Features

- Three new Facilities & Maintenance Areas + Parking and Materials Storage
- Facilities and Maintenance Buildings Elevations tied to Adjacent LNT Project
- Two new Grounds Area Buildings + Parking and Equipment Storage
- Storm Drainage Treatment via Modular Wetland Systems and Detained in UG Storage Chambers
- Loop Road Relocation from through Parking Lot to the outside of Parking Lot F
- Lot F Revisions includes 2 New Entry Points and ADA Relocation + Storm Drainage Treatment

Project Site Plan



Project Budget Distribution

