

Project Overview

Current Status /Phase	Construction
Construction Type	New Construction
Gross Square Footage	1,251
Division of State Architect	04-120339
Construction Method	Design / Bid / Build
Project Life-Span	1284 Days

Project Financials

Funded By	Measure Z
Programmed Budget	\$8,239,219
Current Budget	\$16,272,669
Expenditures to Date	\$8,787,194

Project Teams

Architect	Gensler
Structural Engineer	Wiseman + Rohy Structural Engineers
Electrical Engineer	NV5 Engineering
Mechanical Engineer	NV5 Engineering
SWC Project Manager	Gaby Arana
Contractor	SWCS, Inc.
DSA Inspector	Consulting Inspection Services

Site Detail

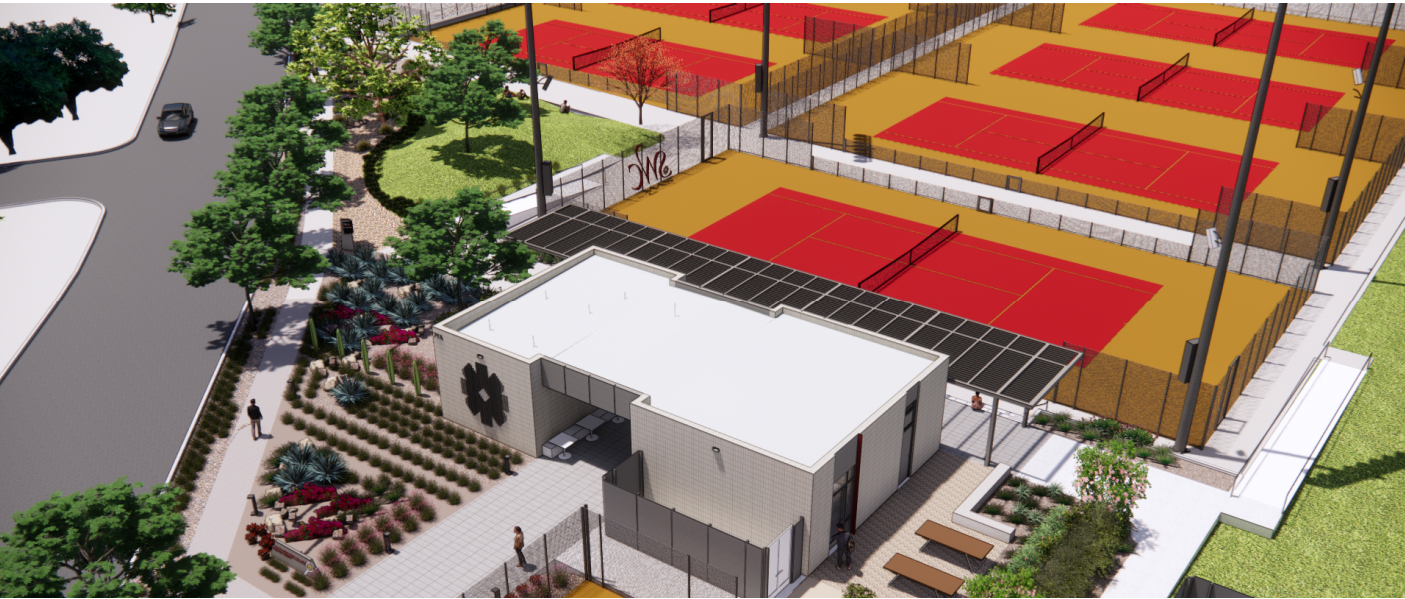
Campus	Chula Vista (Main) Campus
Coordinates	32°38'14.8"N 116°59'59.3"W

Project Schedule

Programming	Design and DSA Finish	Construction Finish	FFE & Move-In Finish
Fall 2019	Spring 2022	Fall 2024	Fall 2024

Project Insight

The Tennis Center project consists of the demolition of existing grounds buildings, relocation of existing solar photovoltaic array structures and construction of new single-story sports facility building and ten (10) new tennis courts. Project scope also includes new hardscape and landscape improvements for access to all new courts and building.



Project Features

- New clubhouse with team room
- Accessible restrooms
- Sports medicine spaces
- Coach’s office
- Ten (10) Tennis Courts
- Spectator Seating
- Upgraded court lighting

Project Site Plan



Project Budget Distribution

